

FIGURE 1. Gross domestic product, annual growth (%), Puerto Rico, 1990–2000.

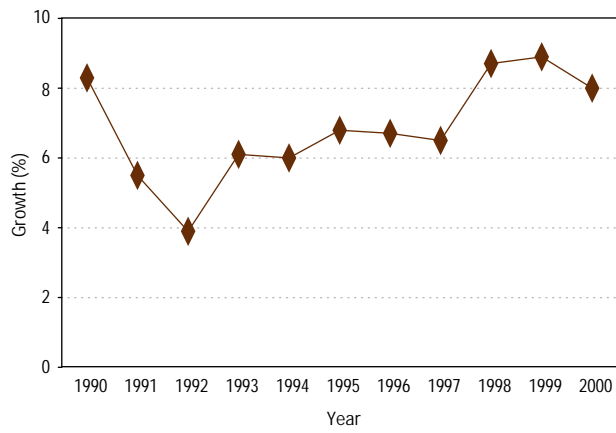


FIGURE 4. Vaccination coverage among the population under 1 year of age, by vaccine, Puerto Rico, 1999–2000.

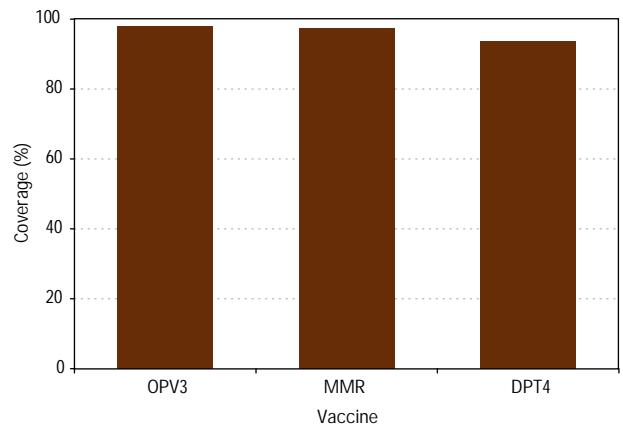


FIGURE 2. Population structure, by age and sex, Puerto Rico, 2000.

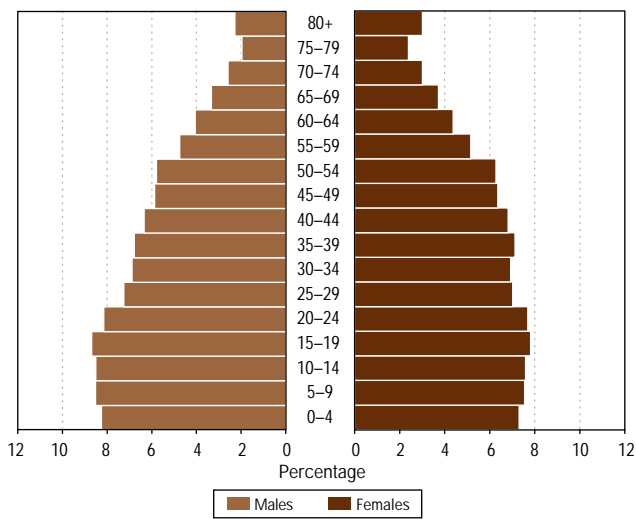


FIGURE 5. AIDS incidence, by sex, with male-female ratio, Puerto Rico, 1990–2000.

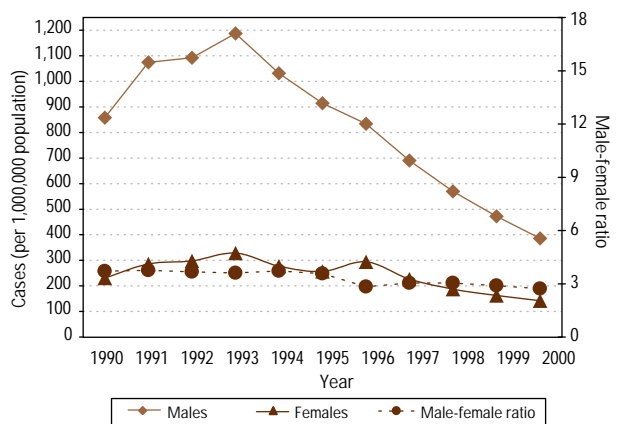


FIGURE 3. Estimated mortality, by broad groups of causes and sex, Puerto Rico, 1999.

