

Demographic and Socioeconomic Data

Total population (thousands)(2007)	738
Annual births average (thousands) (2007)	12.5
Women of childbearing age (WCBA) (2007)	182
Gross national income (US\$ per capita)	
Current value(2006)	1,150
Infant Mortality Rate (2005)	22.0
Population below int'l poverty line (%) (1998-2004)
National health expenditure as a % of GDP	
Public expenditure (%) (2004)	5.6
Private expenditure (%) (2004)	1.1

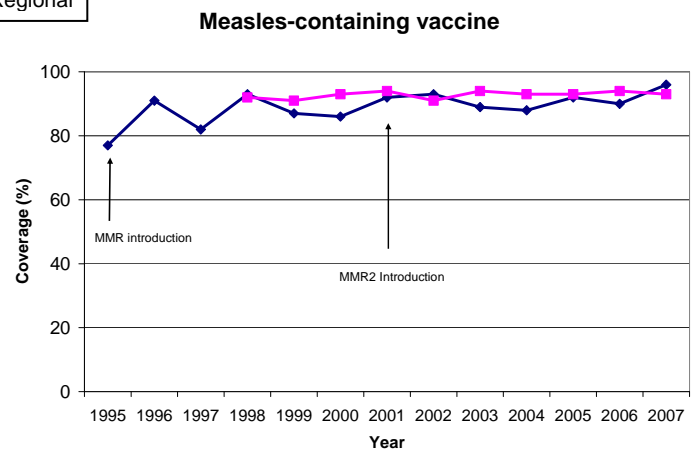
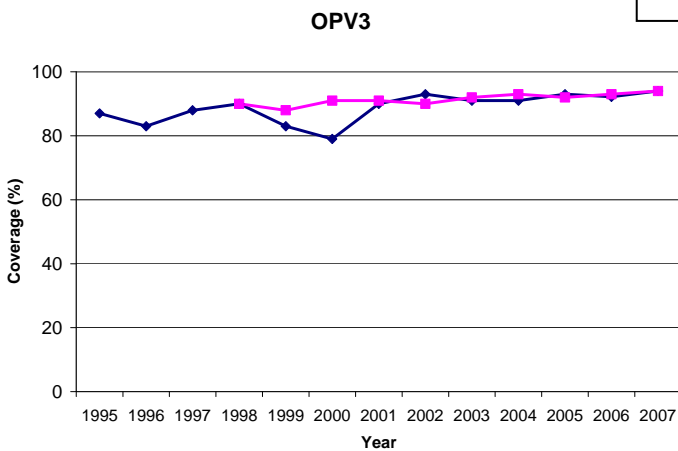
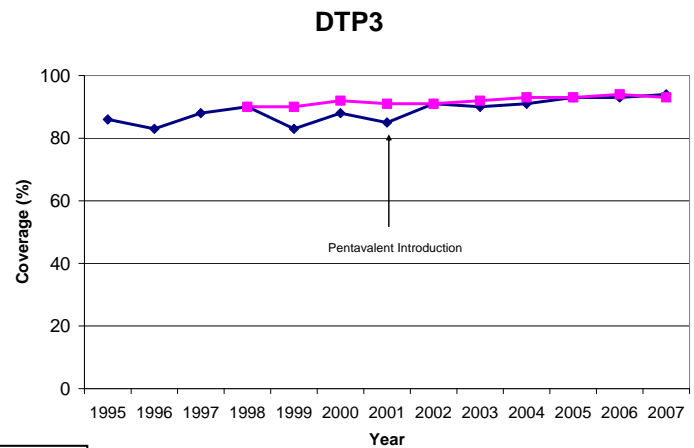
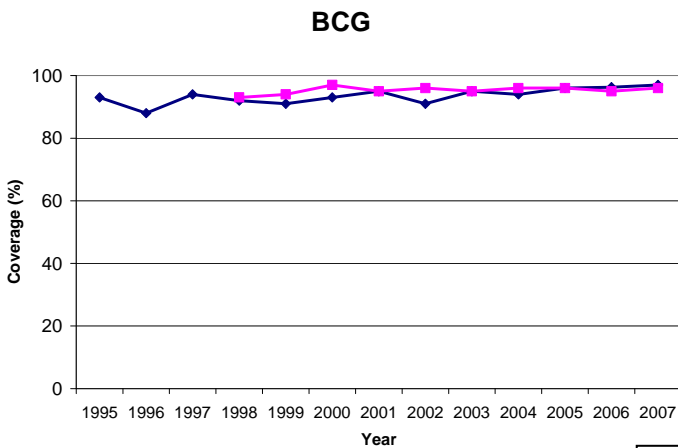


Source: United Nations Population Division ; US Bureau of the Census; The World Bank; and WHO. 2007 or last available year.

For more information:

- PAHO country profile: http://www.paho.org/english/dd/ais/cp_328.htm
- WHO Immunization profile: http://www.who.int/immunization_monitoring/en/globalsummary/countryprofileselect.cfm
- GAVI country profile: http://www.gavialliance.org/resources/cp_2004_guyana.pdf

Immunization Coverage, 1995 – 2007



Immunization Schedule, 2007

BCG	NB				
OPV	2m	4m	6m	18m	45m
DPT				18m	45m
DPT-Hib-HepB	2m	4m	6m		

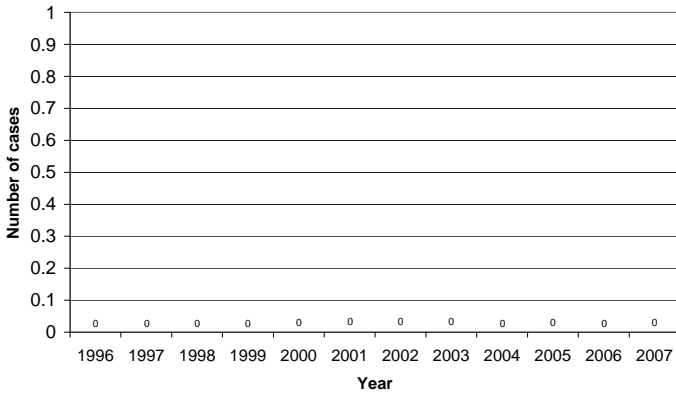
MMR	12m	45m		
TT/Td	15y+; pregnant women			
Yellow fever	1y			

NB: newborn; m-month; y-year; WCBA: women of child-bearing age

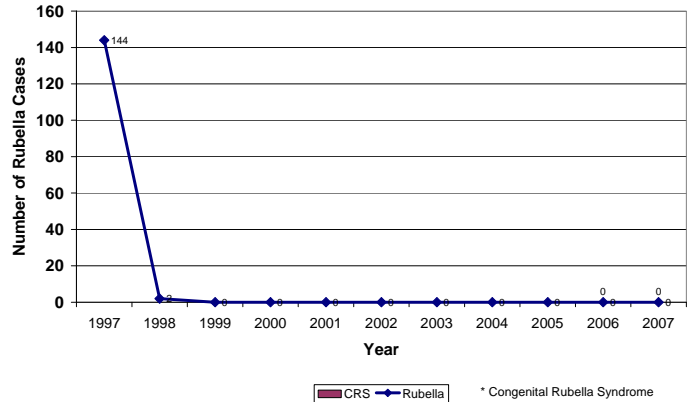


Morbidity Data

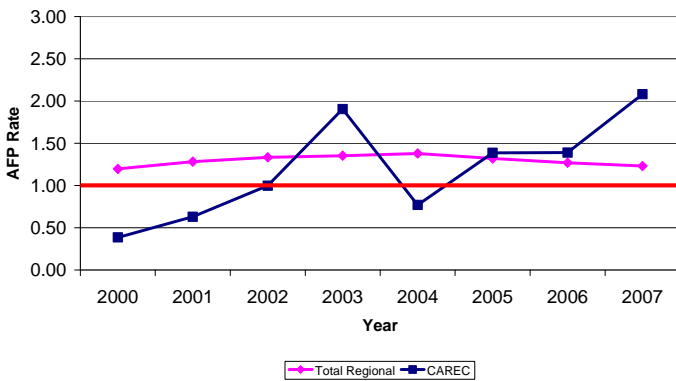
Confirmed Measles Cases, 1996- 2007



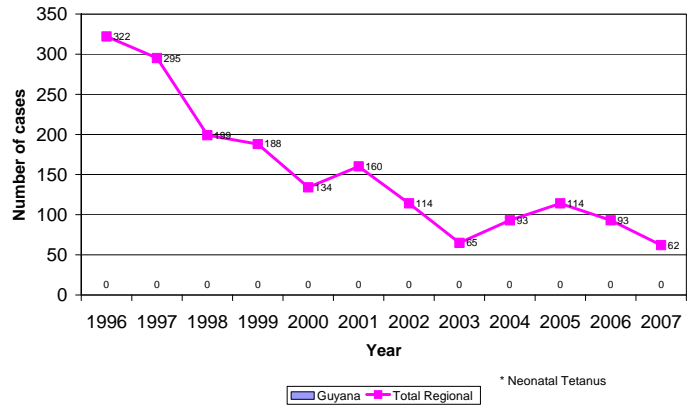
Confirmed Rubella and CRS* Cases, 1997-2007



AFP Rates per 100,000 in children aged <15 years 2000-2007



Confirmed NNT* Cases, 1996-2007



Surveillance Indicators, 2007

Acute Flaccid Paralysis (AFP) - CAREC		
	Country	Expected
Number of cases	42*	
AFP rate per 100,000 children aged <15 years	2.08	1.0
% of cases investigated <48 hours	83	80
% of cases with 1 sample collected within 14 days of Onset	43	80
% of sites reporting	100	80

Measles/Rubella - CAREC		
	Country	Expected
Number of suspect cases	507	
% of sites reporting weekly	99	80
% of cases with adequate investigation	74	80
% of cases with adequate sample	97	80
% of samples arriving in lab ≤5 days	25	80
% of results received from lab ≤4 days	95	80
% of cases discarded by lab	98	95

* 15 AFP cases in children <15 years of age for all of CAREC countries

*include information on active case-searches

Source: PESS, MESS, and country reports, Immunization Unit, PAHO.

Highlights: