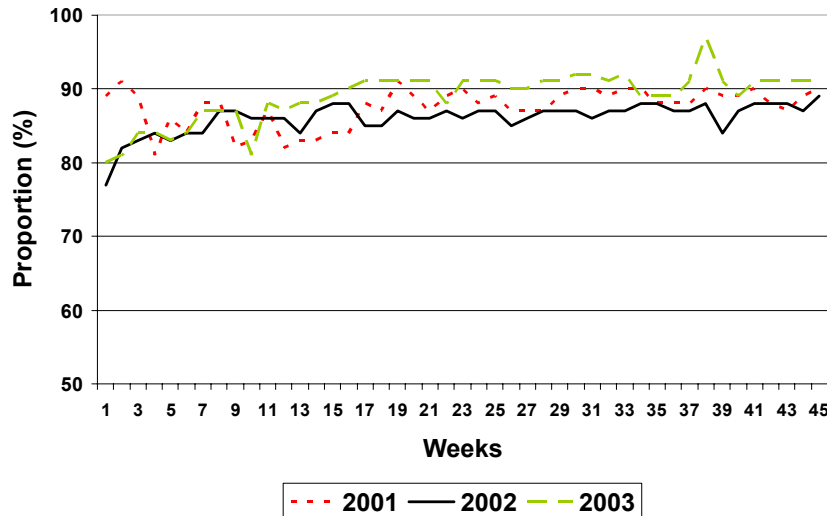




Proportion of sites reporting weekly
Weeks 1-45 of 2001, 2002 and 2003



Source: Country Reports

Table No. 1
Classification of Suspected Measles & Rubella Cases for the Period between Weeks 01-45, 2003

Subregion and Country	Reported Cases 2003		Measles Confirmed 2003			Measles Confirmed 2002		Year/Week of Last Confir. Case	Rubella Confirmed 2003			Diagnosis of Discarded Cases 2003		
	Total	Under Inv.	Clinic.	Lab.	Total	Week 1-45	Total		Clinic.	Lab.	Total	Dengue	Other	
AND	BOL	467	3	0	0	0	0	0	00/40	0	32	32	0	432
	COL	1479	10	0	0	0	140	140**	02/39	9	19	28	111	1330
	ECU	340	12	0	0	0	0	0	01/14	47	20	67	9	252
	PER	1061	70	0	0	0	0	0	00/13	4	120	124	1	866
	VEN	1460	0	0	0	0	2396	2392	02/47	0	30	30	84	1346
BRA	BRA	13363	2557	0	0	0	1	1	02/11	88	212	300	0	10506
CAP	COR	17	0	0	0	0	0	0	99/23	17
	ELS	226	0	0	0	0	0	0	01/19	0	3	3	32	191
	GUT	502	42	0	0	0	0	0	98/05	0	4	4	1	455
	HON	291	0	0	0	0	0	0	97/29	0	2	2	60	229
	NIC	309	2	0	0	0	0	0	94/14	0	5	5	17	285
	PAN	206	0	0	0	0	0	0	95/49	0	0	0	8	198
CAR	CAR	287	5	0	0	0	0	0	98/23	0	0	0	32	250
LAC	CUB	895	77	0	0	0	0	0	93/27	0	0	0	0	818
	DOR	537	0	0	0	0	0	0	01/23	0	3	3	2	532
	FGU	18	0	0	0	0	18
	GUA
	HAI	20	2	0	0	0	0	0	01/39	0	1	1	0	17
	MAR
	PUR	0	0	0	0	0	0	0	...	0	0	0	0	0
MEX	MEX	3217	778	0	41	41*	0	0	03/35	0	24	24	0	2374
NOA	CAN	14	...	0	14	14*	6	6*	03/45
	USA	47	...	0	41	41†	26	44§	03/30	0	6	6
SOC	ARG	388	26	0	0	0	0	0	00/11	2	9	11	0	351
	CHI	180	7	0	1	1*	0	0	03/19	0	1	1	0	171
	PAR	317	0	0	0	0	0	0	98/44	0	11	11	1	305
	URU	2	1	0	0	0	0	0	...	0	0	0	0	1
Total		25643	3592	0	97	97	2569	2583	---	150	502	652	358	20944

... No report received during 2003

* Due to importation

** 53 cases are imported

† 10 cases are imported

§ 18 cases are imported



Measles Surveillance

Vol. 9, No. 45

Table No. 2
Measles Suspected Cases Under Investigation for the Period between Weeks 01-45, 2003

Region	Country	Pend. cases 2002	Cumul. 2003	Week of Rash Onset																	
				1-4	5-8	9-12	13-16	17-20	21-24	25-28	29-32	33-36	37-40	41	42	43	44	45	Unk.		
AND	BOL	0	1	0	0	0	0	0	0	0	0	0	0	0	0	0	0	1	0		
	COL	0	2	0	0	0	0	1	0	0	0	0	1	0	0	0	0	0	0	0	
	ECU	0	1	0	0	0	0	0	0	0	0	0	0	0	1	0	0	0	0	0	
	PER	0	2	0	0	0	0	0	0	0	0	0	0	0	1	1	0	0	0	0	
	VEN	0	0	0	0	0	0	0	0	0	0	0	0	0	0	0	0	0	0	0	
BRA	BRA	0	286	7	2	8	17	10	17	21	25	60	86	17	16	
	COR	0	0	0	0	0	0	0	0	0	0	0	0	0	0	0	0	0	0	0	
	ELS	0	0	0	0	0	0	0	0	0	0	0	0	0	0	0	0	0	0	0	
	GUT	0	10	0	0	0	0	0	0	0	0	0	2	3	0	1	4	0	0	0	
	HON	0	0	0	0	0	0	0	0	0	0	0	0	0	0	0	0	0	0	0	
CAP	NIC	0	1	0	0	0	0	0	0	0	0	0	0	0	0	0	0	0	0	1	
	PAN	0	0	0	0	0	0	0	0	0	0	0	0	0	0	0	0	0	0	0	
	CAR	0	5	0	0	0	0	0	0	0	1	0	2	0	0	2	0	0	0	0	
	LAC	0	77	5	7	5	6	5	5	2	4	5	2	0	0	
	DOR	0	0	0	0	0	0	0	0	0	0	0	0	0	0	0	0	0	0	0	
MEX	FGU	0	18	0	0	0	0	0	0	0	0	0	0	0	0	0	0	0	0	0	
	GUA	0	0	0	0	0	0	0	0	0	0	0	0	0	0	0	0	0	0	0	
	HAI	0	2	0	0	0	0	0	0	0	0	0	0	0	0	0	0	1	1	0	
	MAR	0	0	0	0	0	0	0	0	0	0	0	0	0	0	0	0	0	0	0	
	PUR	0	0	0	0	0	0	0	0	0	0	0	0	0	0	0	0	0	0	0	
SOC	MEX	0	778*	2	5	9	10	10	29	46	104	202	233	49	46	27	6	0	0	0	
	CAN	0	0	0	0	0	0	0	0	0	0	0	0	0	0	0	0	0	0	0	
	USA	0	0	0	0	0	0	0	0	0	0	0	0	0	0	0	0	0	0	0	
SOC	ARG	0	14	0	0	1	1	1	0	0	1	1	2	1	0	2	1	0	0	0	3
	CHI	0	6	0	0	0	0	0	0	0	0	0	0	1	1	0	1	3	0	0	
	PAR	0	0	0	0	0	0	0	0	0	0	0	0	0	0	0	0	0	0	0	
	URU	0	1	0	0	0	0	0	0	0	0	0	0	1	0	0	0	0	0	0	
Total		0	1204	14	14	23	34	27	51	69	135	268	328	72	65	33	14	5	3	3	

... No report received through the Measles Elimination Surveillance System

* Includes all rash and fever illnesses reported to date

Table No. 3
Measles Surveillance Indicators for the Period between Weeks 01-45, 2003

Region	Country	% Sites reporting Weekly	% Cases Timely Home Visit	% Cases Adequate Sample	% Lab received <=5 days	% Lab Result <=4 days	% Cases Discarded by Lab	Number of Active Municipalities
AND	BOL	...	99	99	76	74	88	0
	COL	88	55	94	69	80	98	0
	ECU	89	42	98	86	93	98	0
	PER	99	94	98	58	97	97	0
	VEN	81	97	99	67	74	100	0
BRA	BRA	90	72	70	61	80	99	0
	COR	0
	ELS	81	50	95	78	89	98	0
	GUT	24	98	99	67	94	99	0
	HON	94	94	100	75	93	100	0
CAP	NIC	100	87	99	86	74	100	0
	PAN	86	86	98	73	99	100	0
	CAR	100	99	95	25	100	98	0
	LAC	97	100	100	91	0
	DOR	90	100	98	45	95	100	0
MEX	FGU	100	0
	GUA	0
	HAI	...	85	95	95	79	94	0
	MAR	0
	PUR	0
SOC	MEX	89	98	98	79	44	100	15
	CAN	0
	USA	0
SOC	ARG	93	25	85	71	83	100	0
	CHI	97	65	91	82	96	98	0
	PAR	89	64	100	87	100	100	0
	URU	30	100	100	100	0	...	0
Total and Average		91	78	81	63	71	99	15

... No report received during 2003

Issues of Measles Surveillance Bulletin can be accessed at:
<http://www.paho.org/english/ad/fch/im/measles.htm>