

FIGURE 1. Gross domestic product, annual growth (%), El Salvador, 1991–2000.

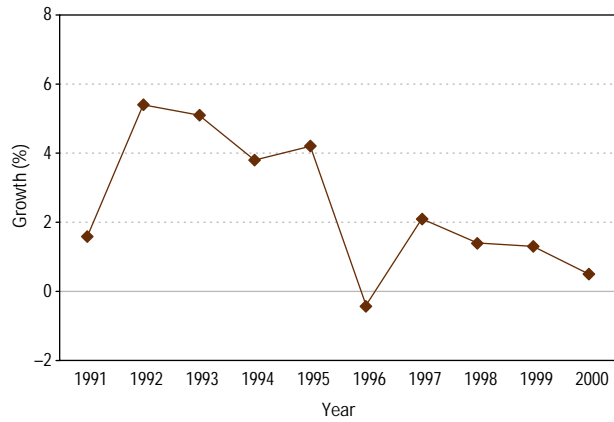


FIGURE 4. AIDS incidence, by sex, with male-female ratio, El Salvador, 1994–1999.

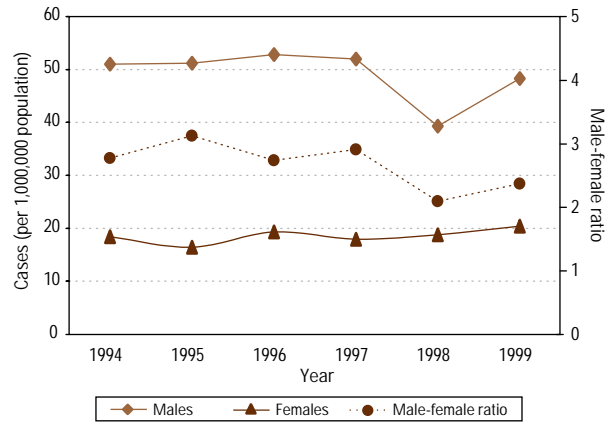


FIGURE 2. Population structure, by age and sex, El Salvador, 2000.

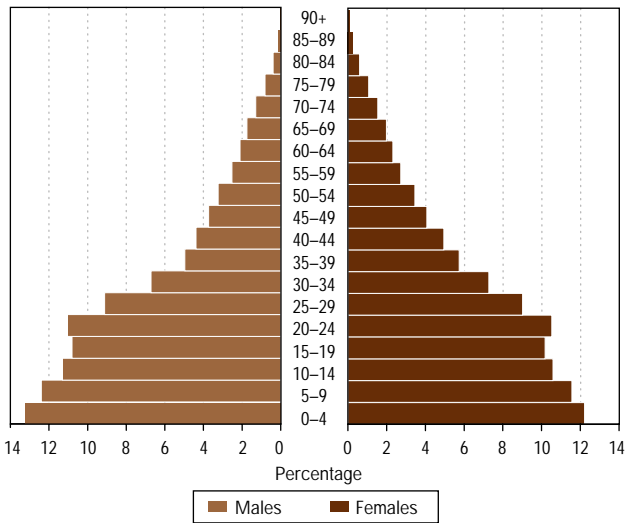


FIGURE 5. Vaccination coverage among the population under 1 year of age, by vaccine, El Salvador, 2000.

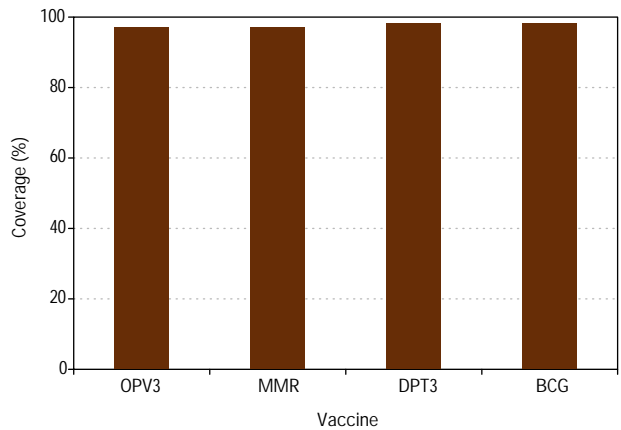


FIGURE 3. Distribution of infant mortality, El Salvador, 1999.

