

Demographic and Socioeconomic Data

Total population (thousands)(2013)	800
Annual births average (thousands) (2013)	16.2
Women of childbearing age (thousands) (2013)	203
Gross national income (US\$ per capita)	
Current value (2013)	3,750
Infant Mortality Rate (...)	...
National health expenditure as a % of GDP	
Public expenditure (%) (2012)	4.3
Private expenditure (%) (2012)	2.2

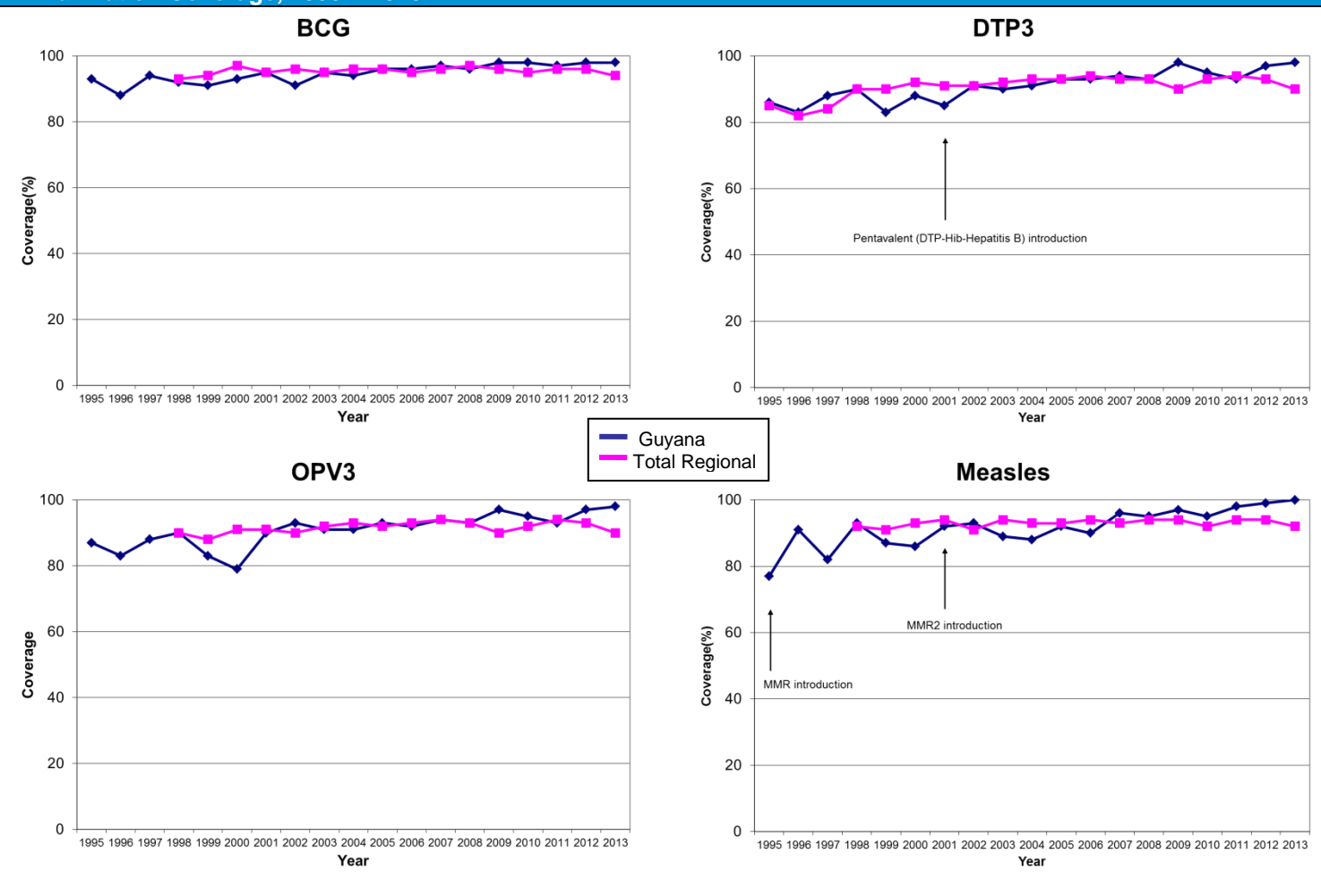
Source: United Nations Population Division ; US Bureau of the Census; The World Bank; and WHO. 2013 or last available year.



For more information:

- PAHO country profile: http://www.paho.org/english/dd/ais/cp_328.htm
- WHO Immunization profile: http://www.who.int/immunization_monitoring/en/globalsummary/countryprofileselect.cfm
- GAVI country profile: http://www.gavialliance.org/resources/cp_2004_guyana.pdf

Immunization Coverage, 1995 – 2013



BCG= bacille de Calmette-Guérin (anti-tuberculosis vaccine); DTP3 = third dose of diphtheria-pertussis-tetanus vaccine (as DPT or combination vaccine); OPV3 = third dose of polio vaccine
MMR = first dose of measles, mumps and rubella vaccine; MMR2 = second dose of measles, mumps and rubella vaccine; Pentavalent = combination vaccine DTP-Hib-HepB

Immunization Schedule, 2013

BCG	2m				
OPV	2m	4m	6m	19m	3y
IPV	2m*	4m*	6m*	18m*	3y*
DTP				18m	45m
DTP-Hib-HepB	2m	4m	6m		
Hepatitis B pediatric	1m	5m			

MMR	12m	45m	
Td	15y; pregnant women		
Yellow fever	12m		
Rotavirus	2m	4m	6m
Pneumocococo conjugate	2m	4m	6m
HPV	special groups		
Meningocococo	special groups		

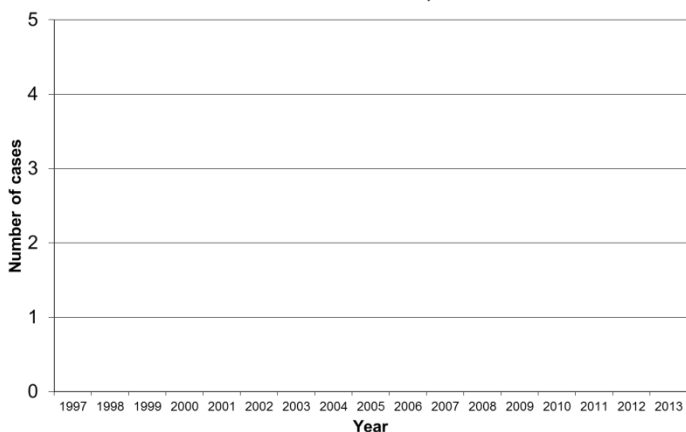
NB: newborn; m-month; y-year

*administered to special groups at subnational level

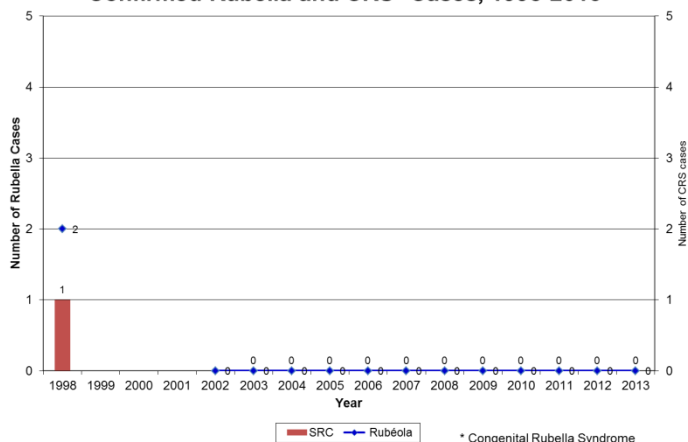


Morbidity Data

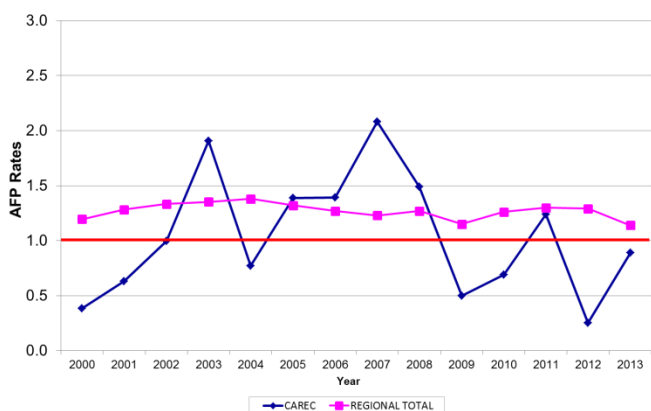
Confirmed Measles Cases, 1997-2013



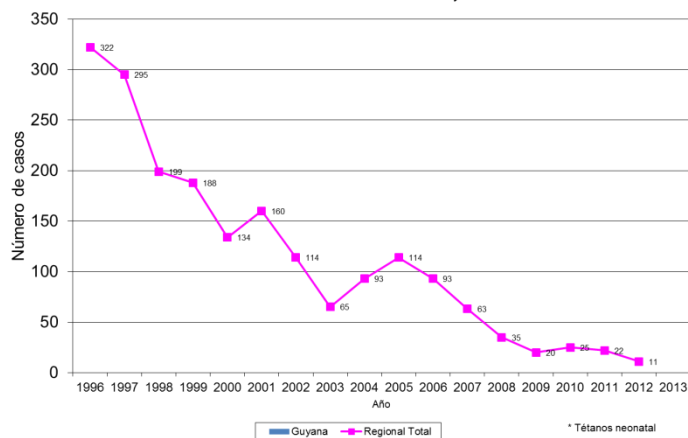
Confirmed Rubella and CRS* Cases, 1998-2013



AFP rates per 100,000 population in children <15 years 2000 - 2013



Casos Confirmados de TNN*, 1996-2013



Surveillance Indicators, 2013

Acute Flaccid Paralysis (AFP) - CAREC			Measles/Rubella - CAREC		
	Country	Expected		Country	Expected
Number of cases	18*		Number of suspect cases	349	
AFP rate per 100,000 children aged <15 years	0.89	1.0	% of sites reporting weekly	76	80
% of cases investigated <48 hours	28	80	% of cases with adequate investigation	12	80
% of cases with 1 sample collected within 14 days of Onset	50	80	% of cases with adequate sample	90	80
% of sites reporting	62	80	% of samples arriving in lab ≤5 days	20	80
			% of results received from lab ≤4 days	94	80

* Four reported cases from Guyana

Source: ISIS, FGL-IM/PAHO

Highlights:

- Last EPI evaluation in 2008
- Effective Vaccine Management assessment in 2014
- Transitioning out of GAVI support