

Demographic and Socioeconomic Data

Total population (thousands)(2013)	1,341
Annual births average (thousands) (2013)	19.4
Women of childbearing age (thousands) (2013)	355
Gross national income (US\$ per capita)	
Current value (2013)	15,760
Infant Mortality Rate (2012)	12.7
National health expenditure as a % of GDP	
Public expenditure (%) (2012)	...
Private expenditure (%) (2012)	...

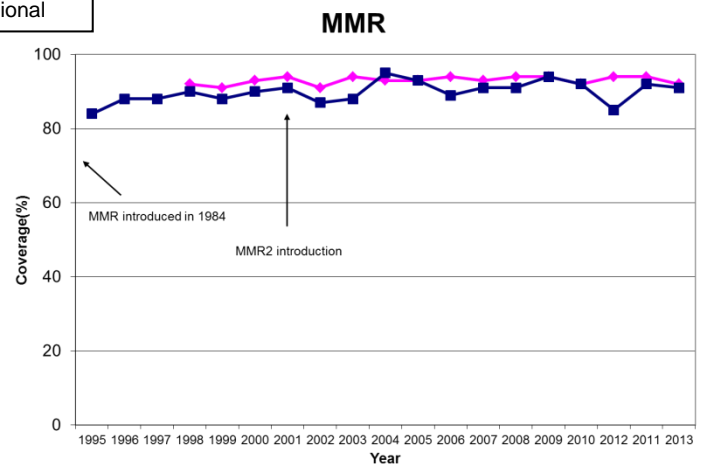
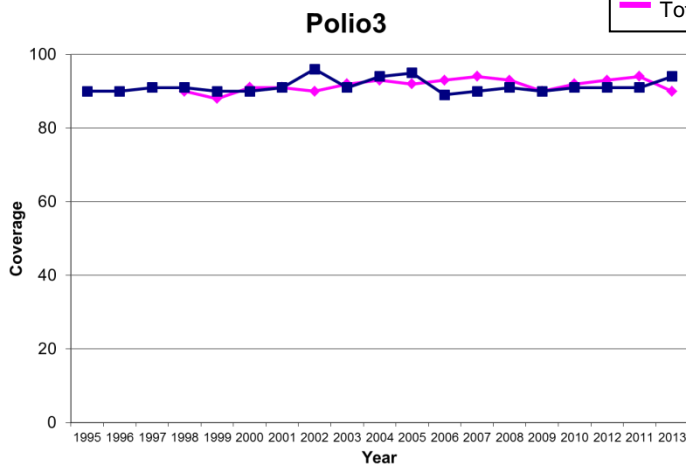
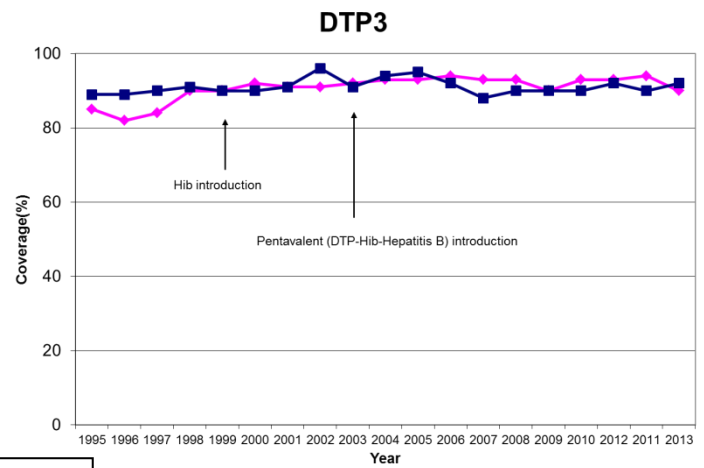
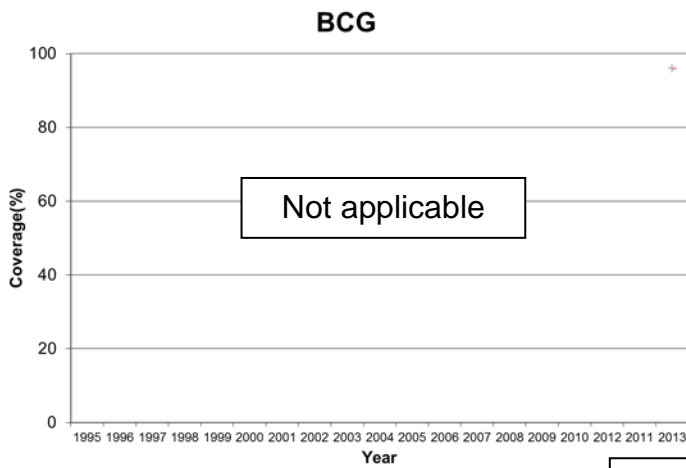
Source: United Nations Population Division ; US Bureau of the Census; The World Bank; and WHO. 2013 or last available year.



For more information:

- PAHO country profile: http://www.paho.org/english/dd/ais/cp_780.htm
- WHO Immunization profile: http://apps.who.int/immunization_monitoring/globalsummary
- GAVI country profile: not applicable

Immunization Coverage, 1995 – 2013



BCG= bacille de Calmette-Guérin (anti-tuberculosis vaccine); DPT3 = third dose of diphtheria-pertussis-tetanus vaccine (as DPT or combination vaccine); OPV3 = third dose of polio vaccine
MMR = first dose of measles, mumps and rubella vaccine; MMR2 = second dose of measles, mumps and rubella vaccine; Pentavalent = combination vaccine DTP-Hib-HepB

Immunization Schedule, 2013

BCG	NA				
OPV	2m	4m	6m	18m	4-5y
DTP				18m	5y
DTP-Hib-HepB	2m	4m	6m		
Hepatitis B	risk groups				
MMR	1y	4-5y			

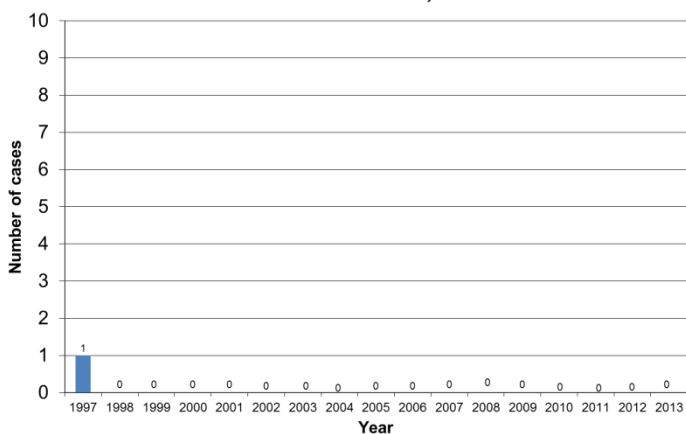
TT/Td	>10y		
Yellow fever	1y	11y	
Influenza	6-23m; ≥60y		
Pneumococcal conjugate	2m	4m	6m
Pneumococcal polysaccharide	risk groups		
Meningococci	2y+		

NA: not applicable; m-month; y-year; WCBA: women of child-bearing age
HPV suspended.

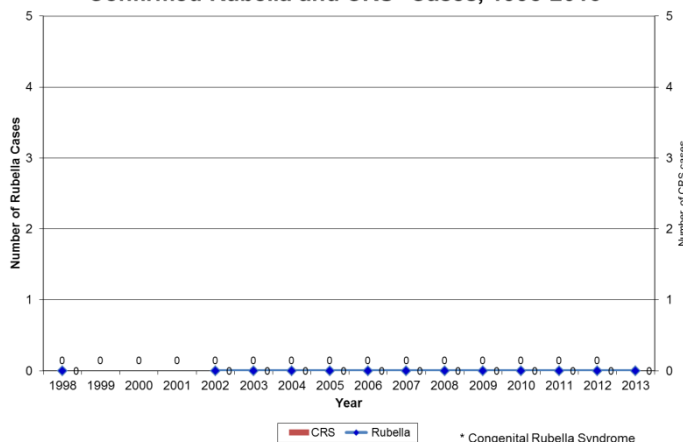


Morbidity Data

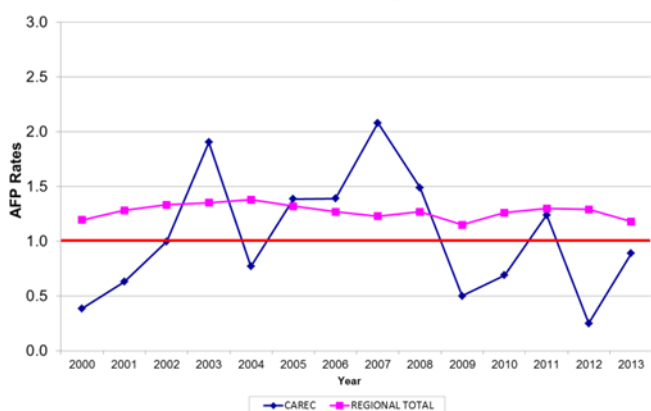
Confirmed Measles Cases, 1997-2013



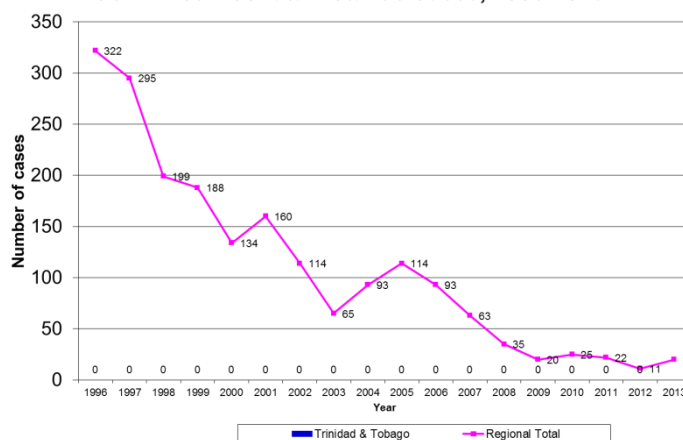
Confirmed Rubella and CRS* Cases, 1998-2013



AFP rates per 100,000 population in children <15 years 2000 - 2013



Confirmed Neonatal Tetanus Cases, 1996-2013



Surveillance Indicators, 2013

Acute Flaccid Paralysis (AFP) - CAREC			Measles/Rubella - CAREC		
	Country	Expected		Country	Expected
Number of cases	18		Number of suspect cases	344	
AFP rate per 100,000 children aged <15 years	0.89	1.0	% of sites reporting weekly	66	80
% of cases investigated <48 hours	28	80	% of cases with adequate investigation	11	80
% of cases with 1 sample collected within 14 days of Onset	50	80	% of cases with adequate sample	90	80
% of sites reporting	52	80	% of samples arriving in lab ≤5 days	20	80
			% of results received from lab ≤4 days	95	80

Source: ISIS reports, FGL-IM/PAHO.

Highlights:

- Trinidad and Tobago pays all vaccine and operation immunization costs using government funds.
- Purchase vaccines through PAHO's Revolving Fund.
- The last evaluation of the immunization program of Trinidad and Tobago was in July 2007.