

**Demographic and Socioeconomic Data**

Total population (thousands)(2013)	539
Annual births average (thousands) (2013)	9.6
Women of childbearing age (thousands) (2013)	140
Gross national income (US\$ per capita)	
Current value (2013)	9,260
Infant Mortality Rate (2011)	15.1
National health expenditure as a % of GDP	
Public expenditure (%) (2012)	3.4
Private expenditure (%) (2012)	2.5

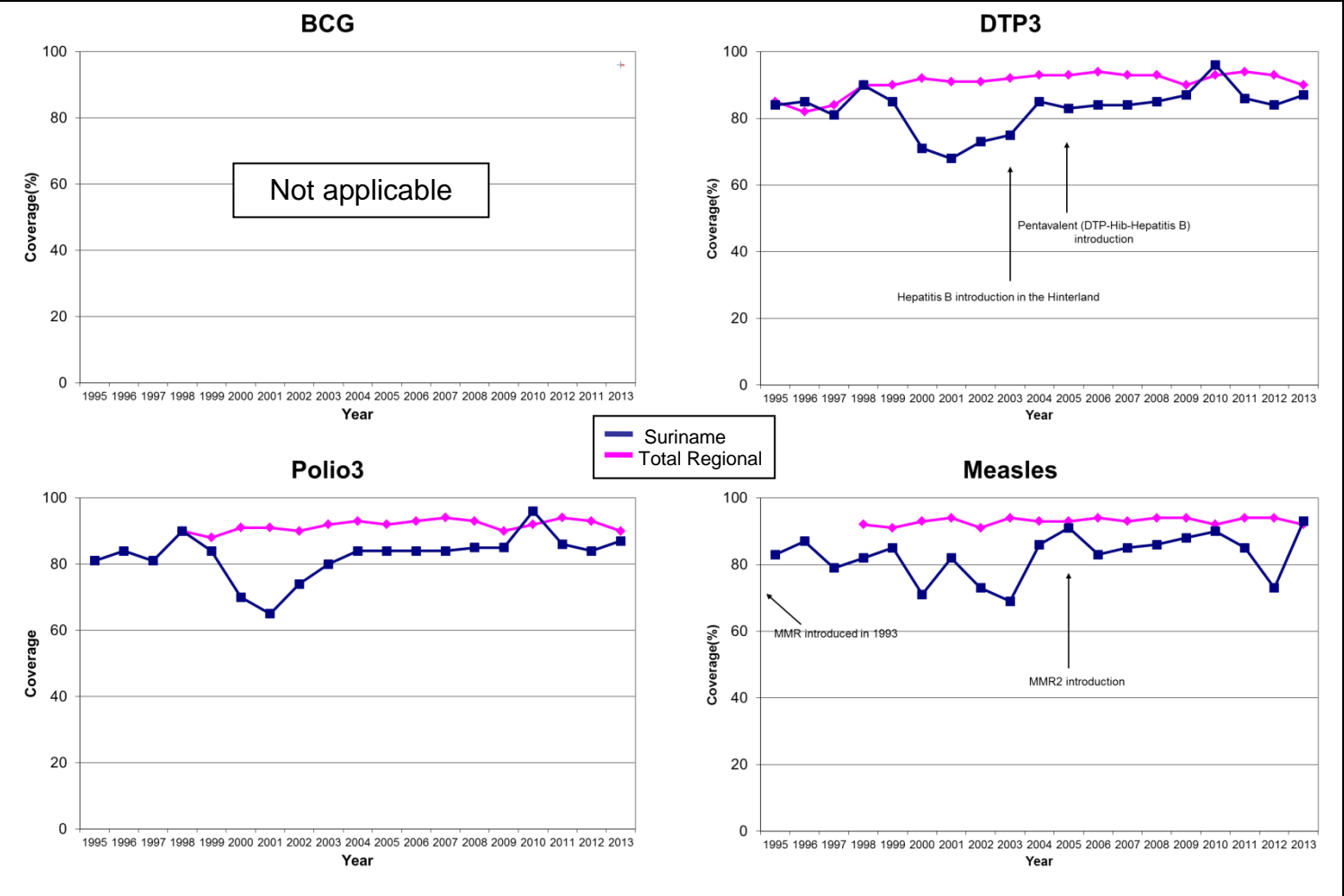
Source: United Nations Population Division; US Bureau of the Census; The World Bank; and WHO. 2013 or last available year.



**For more information:**

- PAHO country profile: [http://www.paho.org/english/dd/ais/cp\\_740.htm](http://www.paho.org/english/dd/ais/cp_740.htm)
- WHO Immunization profile: [http://apps.who.int/immunization\\_monitoring/globalsummary](http://apps.who.int/immunization_monitoring/globalsummary)
- GAVI country profile: not applicable

**Immunization Coverage, 1995 – 2013**



BCG= bacille de Calmette-Guérin (anti-tuberculosis vaccine); DTP3 = third dose of diphtheria-pertussis-tetanus vaccine (as DPT or combination vaccine); OPV3 = third dose of polio vaccine  
MMR = first dose of measles, mumps and rubella vaccine; MMR2 = second dose of measles, mumps and rubella vaccine; Pentavalent = combination vaccine DPT-Hib-HepB

**Immunization Schedule, 2013**

BCG	NA				
OPV	2m	4m	6m	18m	4y
DTP				18m	4y
DTP-Hib-HepB	2m	4m	6m		
Hepatitis B	NB	Health workers and risk groups			

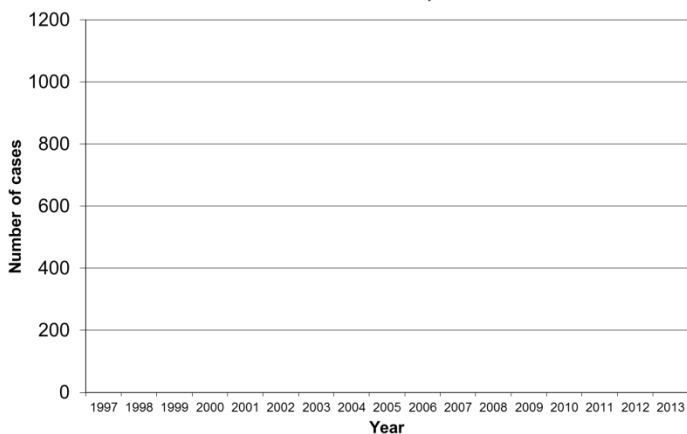
MMR	12m	4y
dT	7y+; pregnant women	
Yellow fever	1y*	
Influenza	chronic disease; adults at risk groups; ≥65y	
HPV	9y (girls only) – starting in 2014	

NA: not applicable; NB: newborn; m-month; y-year

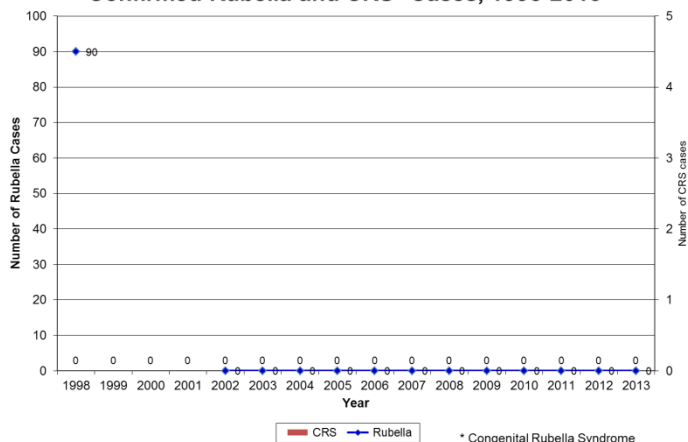


**Morbidity Data**

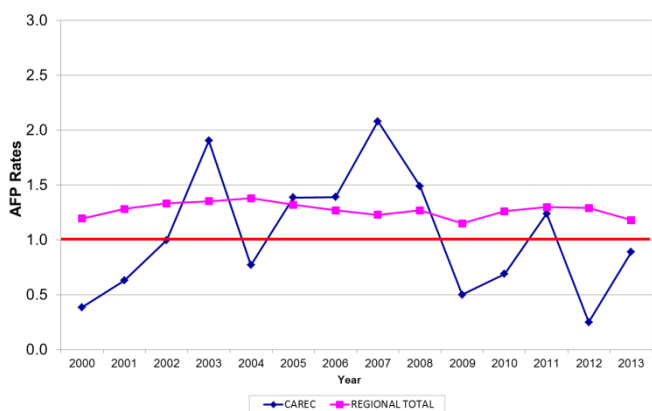
**Confirmed Measles Cases, 1997-2013**



**Confirmed Rubella and CRS\* Cases, 1998-2013**



**AFP rates per 100,000 population in children <15 years 2000 - 2013**



**Confirmed Neonatal Tetanus Cases, 1996-2013**



**Surveillance Indicators, 2013**

Acute Flaccid Paralysis (AFP) – CAR countries			Measles/Rubella – CAR countries		
	Country	Expected		Country	Expected
Number of cases	18		Number of suspect cases	344	
AFP rate per 100,000 children aged <15 years	0.89	1.0	% of sites reporting weekly	66	80
% of cases investigated <48 hours	28	80	% of cases with adequate investigation	11	80
% of cases with 1 sample collected within 14 days of Onset	50	80	% of cases with adequate sample	90	80
% of sites reporting	52	80	% of samples arriving in lab ≤5 days	20	80
			% of results received from lab ≤4 days	95	80

Source: ISIS reports, FGL-IM/PAHO.

**Highlights:**

- Suriname conducted a follow-up campaign for measles and rubella in 2005 and had included a second dose of MMR vaccine into the routine schedule. However, this was discontinued. A follow-up campaign has been recommended
- Yellow fever vaccination is initially given in the Hinterlands, but it was expanded to be nationwide
- There is good coordination on immunization with bordering countries, especially during Vaccination Week in the Americas
- Suriname conducted a Data Quality Self-Assessment in early 2009 and has continued reviewing data quality
- Seasonal influenza vaccine was introduced in 2009
- Suriname introduced HPV in 2014
- All vaccines are procured with national funds. Introducing new vaccines will have a significant impact on the EPI budget