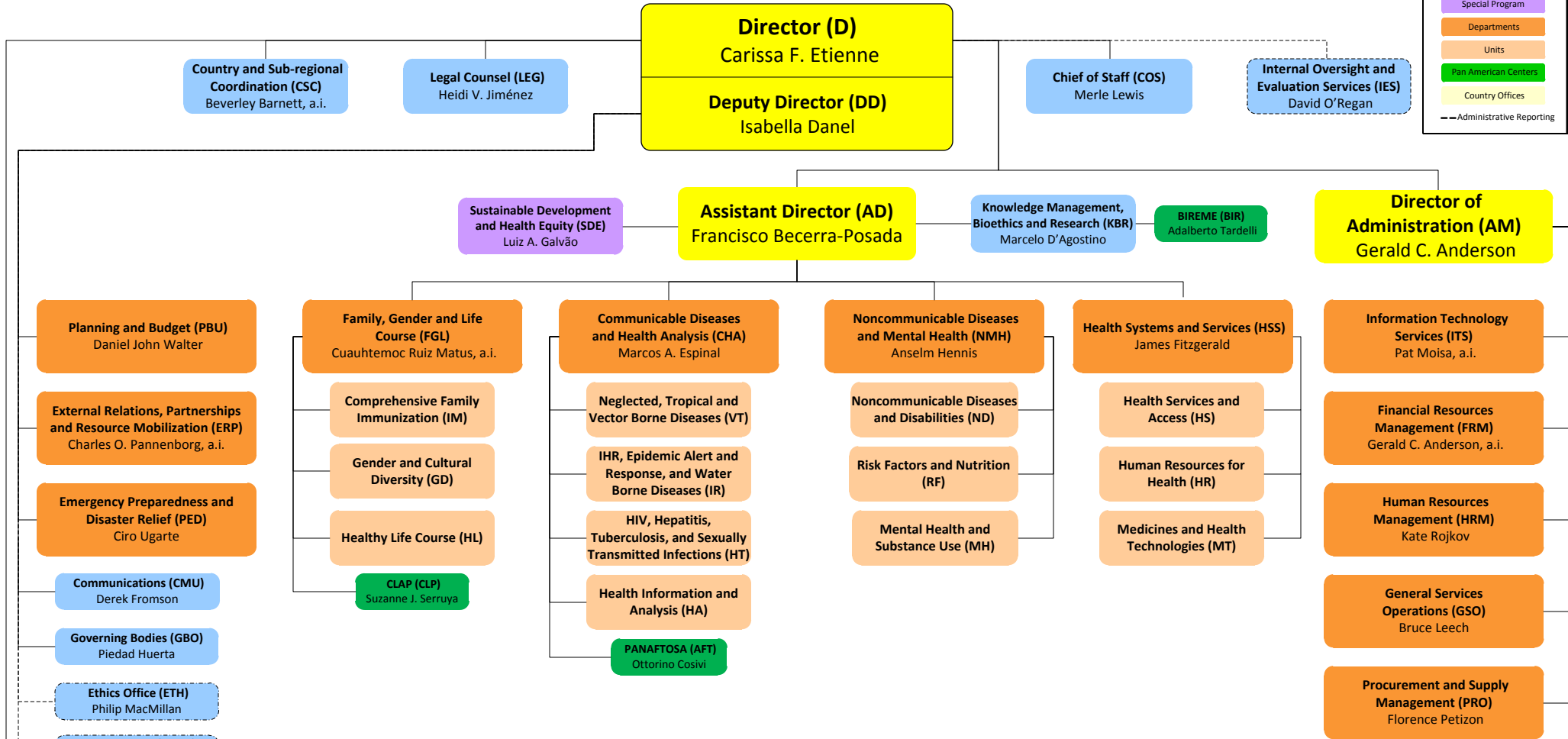


Organizational Chart of the Pan American Sanitary Bureau



Country Offices

ARGENTINA (ARG)
Pier Paolo Balladelli

BAHAMAS (BAH)*
Gerarda Eijkemans

*Also serves:
• Turks & Caicos (TCA)

**BARBADOS (BAR) & EASTERN
CARIBBEAN COUNTRIES
(ECC) ***
Godfrey C. Xuereb

*Also serves:
• Anguilla (ANU)
• Antigua and Barbuda (ANI)
• British Virgin Islands (VIB)
• Dominica (DOM)
• French Guiana (FRG)
• Grenada (GRA)

- Guadeloupe (GUA)
- Martinique (MAR)
- Montserrat (MOT)
- St. Kitts and Nevis (SCN)
- St. Lucia (SAL)
- St. Vincent and the Grenadines (SAV)

BELIZE (BLZ)
Kathleen Israel, a.i.

BOLIVIA (BOL)
Giovanni Escalante, a.i.

BRAZIL (BRA)
Joaquín Molina

CHILE (CHI)
Paloma Cuchi

COLOMBIA (COL)
Gina Watson

COSTA RICA (COR)
Lilian Reneau-Vernon

CUBA (CUB)
José Luis Di Fabio

DOMINICAN REPUBLIC (DOR)
Laura Ramirez, a.i.

ECUADOR (ECU)
Gina Tambini

EL SALVADOR (ELS)
José Ruales

GUATEMALA (GUT)
Guadalupe Verdejo

GUYANA (GUY)
William Adu-Krow

HAITI (HAI)
Jean-Luc Poncelet

HONDURAS (HON)
Ana Solis-Ortega Treasure

JAMAICA (JAM)*
Noreen Jack

*Also serves:
• Bermuda (BER)
• Cayman Islands (CAY)

MEXICO (MEX)
Maureen Birmingham

NICARAGUA (NIC)
Socorro Gross-Galiano

PANAMA (PAN)
José F. Hernández-Pimentel

PARAGUAY (PAR)
Carlos Castillo-Solórzano

PERU (PER)
Luis Fernando Leanes

SURINAME (SUR)
Guillermo Troya

TRINIDAD Y TOBAGO (TRT)
Bernadette Theodore-Gandi

URUGUAY (URU)
Eduardo Levcovitz

VENEZUELA (VEN)
Celia Riera