



POPULATION

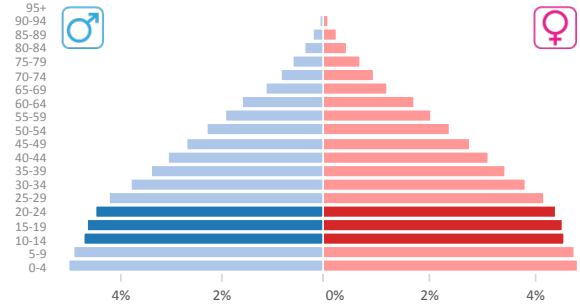
MALE FEMALE TOTAL

Source: United Nations Population Division: World Population Prospects, 2015 Revision.

Adolescent and Youth Population

Age	Male	Female	Total
20-24	736,095	717,005	1,453,100
15-19	763,198	737,259	1,500,457
10-14	772,409	741,919	1,514,328
10-24	2,271,702	2,196,183	4,467,885

Adolescents and Youth, percentage of total population: **27%**

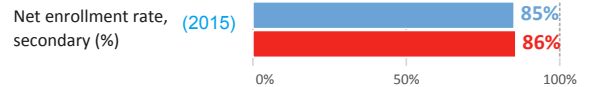


ECONOMIC DEVELOPMENT

EDUCATION PARTICIPATION

Source: World Development Indicators (WDIs), The World Bank, 2016.

GDP per capita, PPP (current international \$) **184,924.7** (2016)
GDP growth (annual %) **-1.5** (2016)



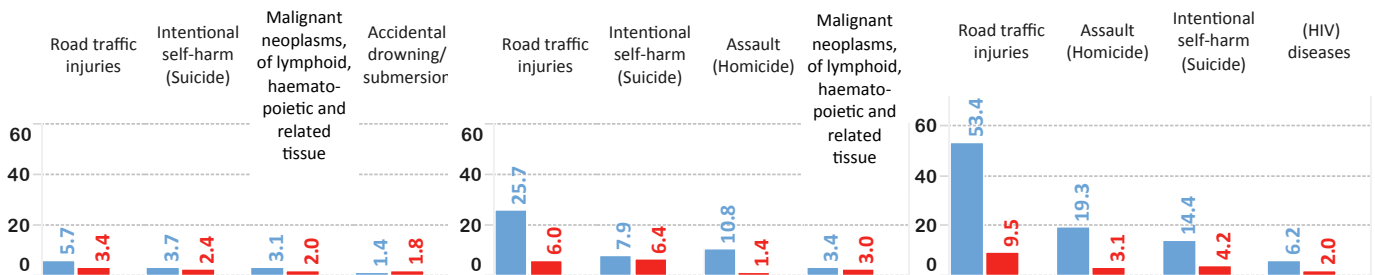
MORTALITY RATES - Four Leading Causes of Death, by Age Group and Sex (per 100,000 Population)

Source: PAHO Regional Mortality Database, Pan American Health Organization (PAHO/WHO), 2016 Edition. Country latest mortality data available as of 2014.

(10-14 years old)

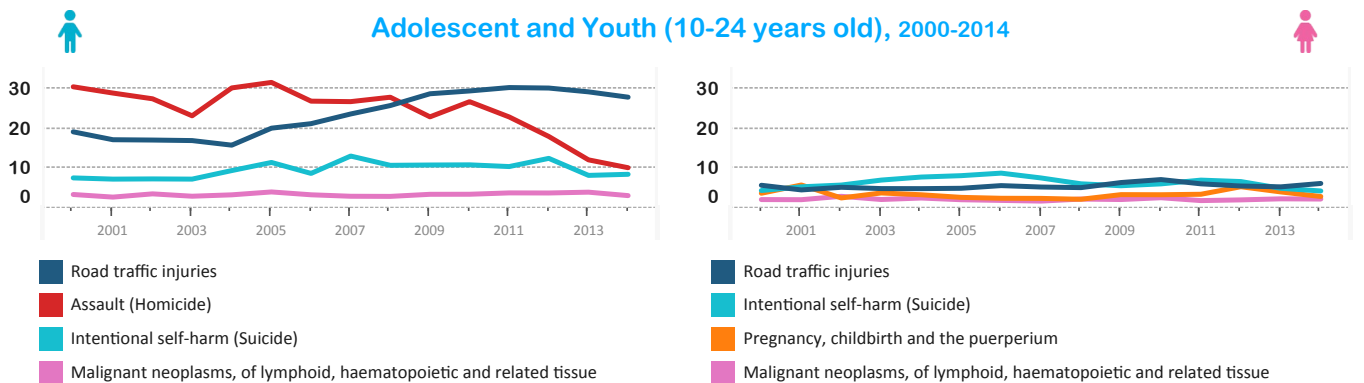
(15-19 years old)

(20-24 years old)



MORTALITY TRENDS - Four Leading Causes of Death, by Sex (per 100,000 Population)

Adolescent and Youth (10-24 years old), 2000-2014



MENTAL HEALTH

PROTECTIVE FACTORS

Source: Global School Health Survey (GSHS), WHO.

Source: Global School Health Survey (GSHS), WHO.



Students who ever seriously considered attempting suicide during the past 12 months

Students who actually attempted suicide one or more times during the past 12 months

Students who had no close friends

Students who missed classes or school without permission 1+ of the past 30 days

Students whose parents really usually knew what they do with free time the past 30 days

Students whose parents usually understood their problems and worries the past 30 days

No Data Available

No Data Available

MALE FEMALE TOTAL

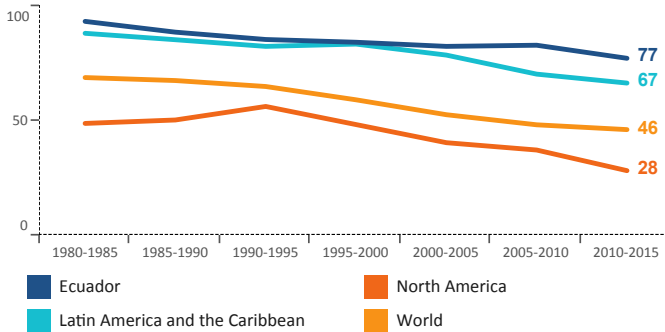


SEXUAL AND REPRODUCTIVE HEALTH

MALE FEMALE TOTAL

Trends in Adolescent Fertility Rate (Births per 1,000 women ages 15-19 years old), 1980-2015

Source: United Nations Population Division.
World Population Prospects: The 2015 Revision.



Sexual Behavior in Adolescents (age group: 13-15 years old)

Source: Global School Health Survey (GSHS), WHO.

Students who ever had sexual intercourse

Among students who ever had sexual intercourse, those that the first time was before age 14 yrs

Among students who ever had sexual intercourse, those who used a condom the last time

No Data Available

RISK FACTORS

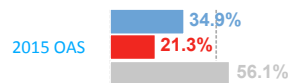
MALE FEMALE TOTAL

Sources: GSHS - Global School Health Survey (WHO) GYTS - Global Youth Tobacco Survey (PAHO) OAS - Report on Drug Use in the Americas



Alcohol Use

Binge drinking among secondary school students



Prevalence of alcohol use among secondary school students (past year)



Prevalence of alcohol use among secondary school students (past month)



Tobacco Use

Prevalence of tobacco use among secondary school students (lifetime)

2015 OAS 27.8%

Prevalence of tobacco use among secondary school students (past year)

2015 OAS 11.9%

Prevalence of tobacco use among secondary school students (past month)

2015 OAS 5.7%
9.0%
4.5%
1.5%
3.1%



Overweight/Obesity/Diet

Students who were overweight (> +1SD from median for BMI for age and sex)

Students who were obese (> +2SD from median for BMI for age and sex)

Students who usually drank carbonated soft drinks 1+ times per day the past 30 days

No Data Available



Physical Activity

Students physically active at least 60 minutes daily on 5+ days the past 7 days

Students who spent 3+ hours per day doing sitting activities

Students who went to physical education (PE) class 3+ days weekly in the school year

No Data Available



Drug Use

Prevalence of cocaine use among secondary school students (lifetime)



Prevalence of marijuana use among secondary school students (lifetime)



Prevalence of marijuana use among secondary school students (past year)



Prevalence of inhalants use among secondary school students (lifetime)



Violence and Unintentional Injuries

Students seriously injured 1+ times during the past 12 months

Students who were bullied 1+ days during the past 30 days

Students who were in a physical fight 1+ times the past 12 months

No Data Available