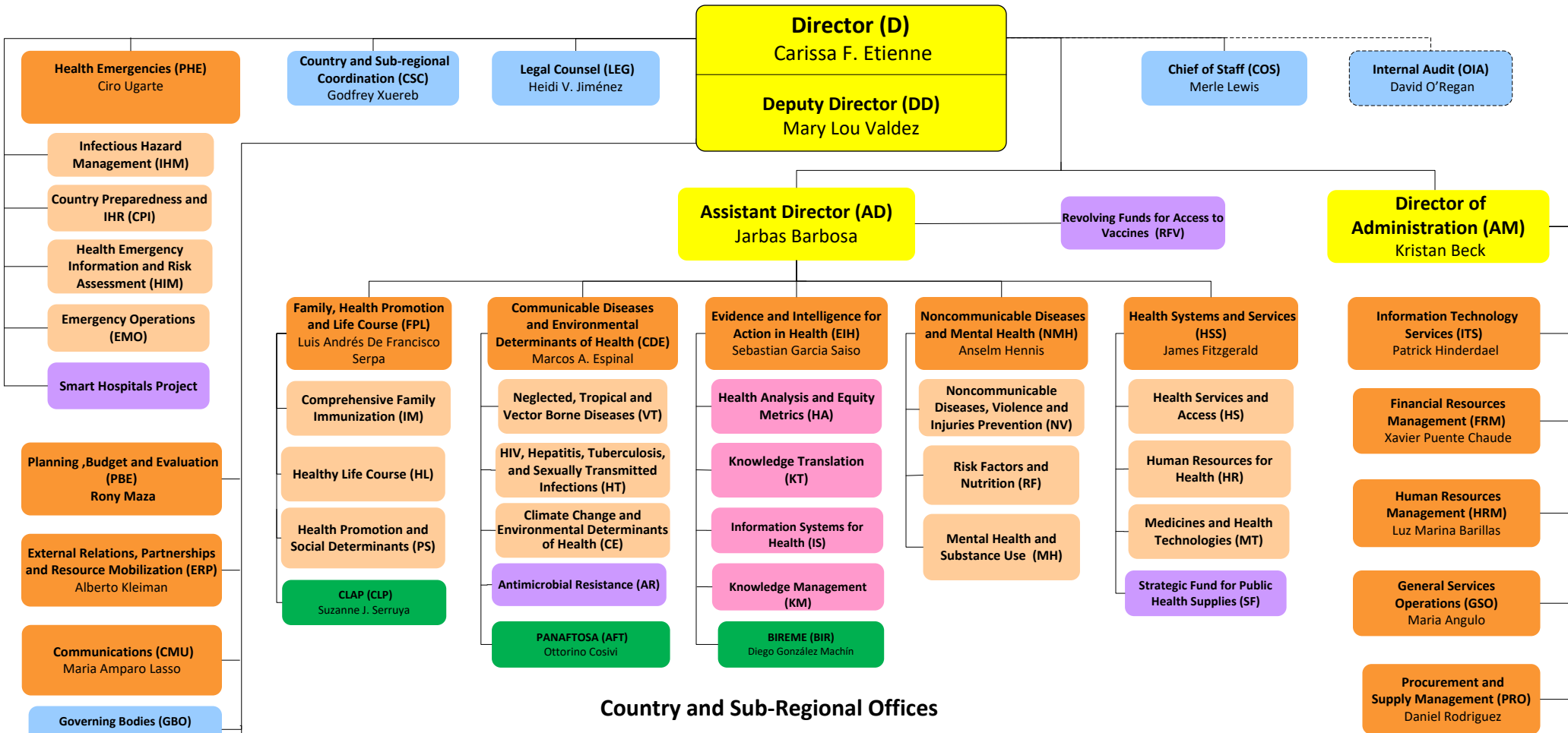


Organizational Chart of the Pan American Sanitary Bureau



Country and Sub-Regional Offices

ARGENTINA (ARG) Eva Jané-Llopis	BAHAMAS (BHS)* Eldona Boisson *Also serves: • Turks & Caicos Islands	COLOMBIA (COL) Gina Tambini Gómez	HAITI (HTI) Maureen Birmingham	PERU (PER) Carlos Garzon
BARBADOS (BRB) & EASTERN CARIBBEAN COUNTRIES (ECC)* Yitades Gebre *Also serves: • Anguilla • Antigua and Barbuda • British Virgin Islands • Dominica • French Guiana • French St. Martin • Grenada • Guadeloupe • Martinique • Montserrat • St. Kitts and Nevis • St. Lucia • St. Vincent and the Grenadines	BELIZE (BLZ) Noreen Jack	COSTA RICA (CRI) María Dolores Perez-Rosales	HONDURAS (HND) Piedad Huerta Arneros	SOUTH AMERICAN SUB-REGION (SAM)* Pier Paolo Ballardelli *Based in Peru
	BOLIVIA (BOL) Alma Morales	CUBA (CUB) Jose Moya	JAMAICA (JAM)* Ian Stein *Also serves: • Bermuda • Cayman Islands	SURINAME (SUR) Karen Lewis-Bell
	BRAZIL (BRA) Socorro Gross-Galiano	DOMINICAN REPUBLIC (DOM) Olivier Ronveaux	MEXICO (MEX) Cristian Morales	TRINIDAD & TOBAGO (TTO)* Erica Wheeler *Also serves: • Aruba • Bonaire • Curacao • Saba • Sint Eustatius • Sint Maarten
	CARIBBEAN SUB-REGION (CRB)* Dean Chambliss *Based in Barbados	ECUADOR (ECU) Adrian Alberto Diaz, a.i	NICARAGUA (NIC) Ana Solis-Ortega Treasure	URUGUAY (URY) Hernan Montenegro
	CENTRAL AMERICAN SUB-REGION (CAM)* Vacant *Based in El Salvador	EL SALVADOR (SLV) Giovanni Escalante	PANAMA (PAN) Gerardo Alfaro	VENEZUELA (VEN) Franklin Hernandez, a.i
	CHILE (CHL) Fernando Leanes	GUATEMALA (GTM) Oscar Martin Barreneche	PARAGUAY (PRY) Haydee Padilla, a.i	
		GUYANA (GUY) Luis Felipe Codina		

