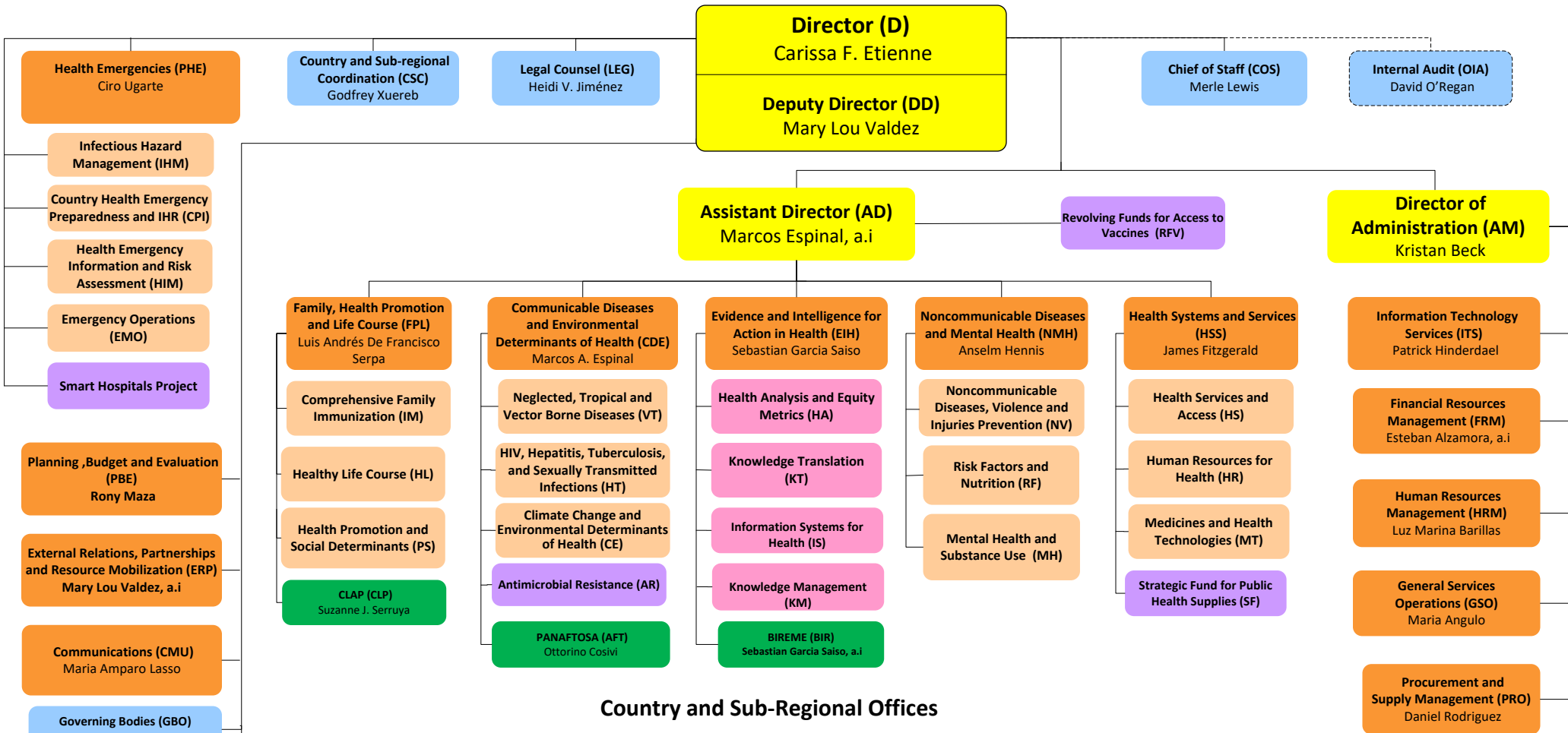


Organizational Chart of the Pan American Sanitary Bureau



Country and Sub-Regional Offices

ARGENTINA (ARG) Eva Jané-Llopis	BAHAMAS (BHS)* Eldona Boisson	COLOMBIA (COL) Gina Tambini Gómez	HAITI (HTI) Maureen Birmingham	PERU (PER) Carlos Garzon
BARBADOS (BRB) & EASTERN CARIBBEAN COUNTRIES (ECC)* Karen Polson, a.i	*Also serves: • Turks & Caicos Islands	COSTA RICA (CRI) Maria Dolores Perez-Rosales	HONDURAS (HND) Piedad Huerta Arneros	SOUTH AMERICAN SUB-REGION (SAM)* Pier Paolo Ballardelli
Also serves: • Anguilla • Antigua and Barbuda • British Virgin Islands • Dominica • French Guiana • French St. Martin • Grenada • Guadeloupe • Martinique • Montserrat • St. Kitts and Nevis • St. Lucia • St. Vincent and the Grenadines	BELIZE (BLZ) Noreen Jack	CUBA (CUB) Jose Moya	JAMAICA (JAM) Ian Stein	SURINAME (SUR) Karen Lewis-Bell
	BOLIVIA (BOL) Alma Morales	DOMINICAN REPUBLIC (DOM) Olivier Ronveaux	*Also serves: • Bermuda • Cayman Islands	TRINIDAD & TOBAGO (TTO)* Erica Wheeler
	BRAZIL (BRA) Socorro Gross-Galiano	ECUADOR (ECU) Oscar Martin Barreneche	MEXICO (MEX) Miguel Malo, a.i	*Also serves: • Aruba • Bonaire • Curacao • Saba • Sint Eustatius • Sint Maarten
	CARIBBEAN SUB-REGION (CRB)* Dean Chambliss	EL SALVADOR (SLV) Giovanni Escalante	NICARAGUA (NIC) Ana Solis-Ortega Treasure	URUGUAY (URY) Hernan Montenegro
	CENTRAL AMERICAN SUB-REGION (CAM)* Juan Manuel Sotelo, a.i	GUATEMALA (GTM) Gerardo Alfaro	PANAMA (PAN) Jorge Victoria, a.i	VENEZUELA (VEN) Cristian Morales
	CHILE (CHL) Fernando Leanes	GUYANA (GUY) Luis Felipe Codina	PARAGUAY (PRY) Marcelo Korc	

