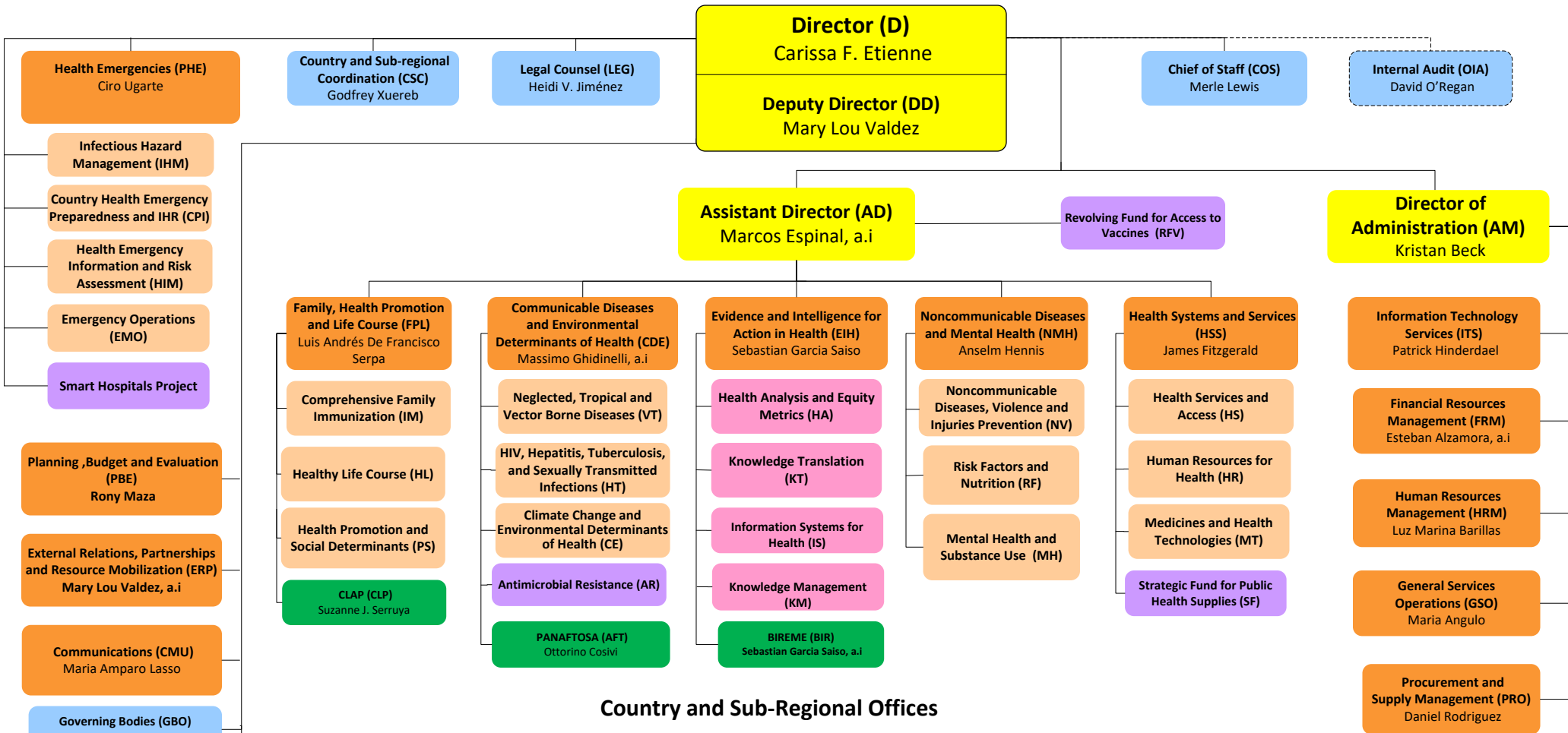


# Organizational Chart of the Pan American Sanitary Bureau



## Country and Sub-Regional Offices

<b>ARGENTINA (ARG)</b> Eva Jané-Llopis	<b>BAHAMAS (BHS)*</b> Eldona Boisson	<b>COLOMBIA (COL)</b> Gina Tambini Gómez	<b>HAITI (HTI)</b> Maureen Birmingham	<b>PERU (PER)</b> Carlos Garzon
<b>BARBADOS (BRB) &amp; EASTERN CARIBBEAN COUNTRIES (ECC)*</b> Karen Polson, a.i	*Also serves: • Turks & Caicos Islands	<b>COSTA RICA (CRI)</b> María Dolores Perez-Rosales	<b>HONDURAS (HND)</b> Piedad Huerta Arneros	<b>SOUTH AMERICAN SUB-REGION (SAM)*</b> Pier Paolo Ballardelli
*Also serves: • Anguilla • Antigua and Barbuda • British Virgin Islands • Dominica • French Guiana • French St. Martin • Grenada • Guadeloupe • Martinique • Montserrat • St. Kitts and Nevis • St. Lucia • St. Vincent and the Grenadines	<b>BELIZE (BLZ)</b> Noreen Jack	<b>CUBA (CUB)</b> Jose Moya	<b>JAMAICA (JAM)*</b> Ian Stein	*Based in Peru <b>SURINAME (SUR)</b> Karen Lewis-Bell
	<b>BOLIVIA (BOL)</b> Alma Morales	<b>DOMINICAN REPUBLIC (DOM)</b> Olivier Ronveaux	*Also serves: • Bermuda • Cayman Islands	<b>TRINIDAD &amp; TOBAGO (TTO)*</b> Erica Wheeler
	<b>BRAZIL (BRA)</b> Socorro Gross-Galiano	<b>ECUADOR (ECU)</b> Oscar Martin Barreneche	<b>MEXICO (MEX)</b> Miguel Malo, a.i	*Also serves: • Aruba • Bonaire • Curacao • Saba • Sint Eustatius • Sint Maarten
	<b>CARIBBEAN SUB-REGION (CRB)*</b> Dean Chambliss	<b>EL SALVADOR (SLV)</b> Giovanni Escalante	<b>NICARAGUA (NIC)</b> Ana Solis-Ortega Treasure	<b>URUGUAY (URY)</b> Hernan Montenegro
	<b>CENTRAL AMERICAN SUB-REGION (CAM)*</b> Juan Manuel Sotelo, a.i	<b>GUATEMALA (GTM)</b> Gerardo Alfaro	<b>PANAMA (PAN)</b> Jorge Victoria, a.i	<b>VENEZUELA (VEN)</b> Cristian Morales
	*Based in Barbados	<b>GUYANA (GUY)</b> Luis Felipe Codina	<b>PARAGUAY (PRY)</b> Marcelo Korc	
	*Based in Panama			
	<b>CHILE (CHL)</b> Fernando Leanes			

