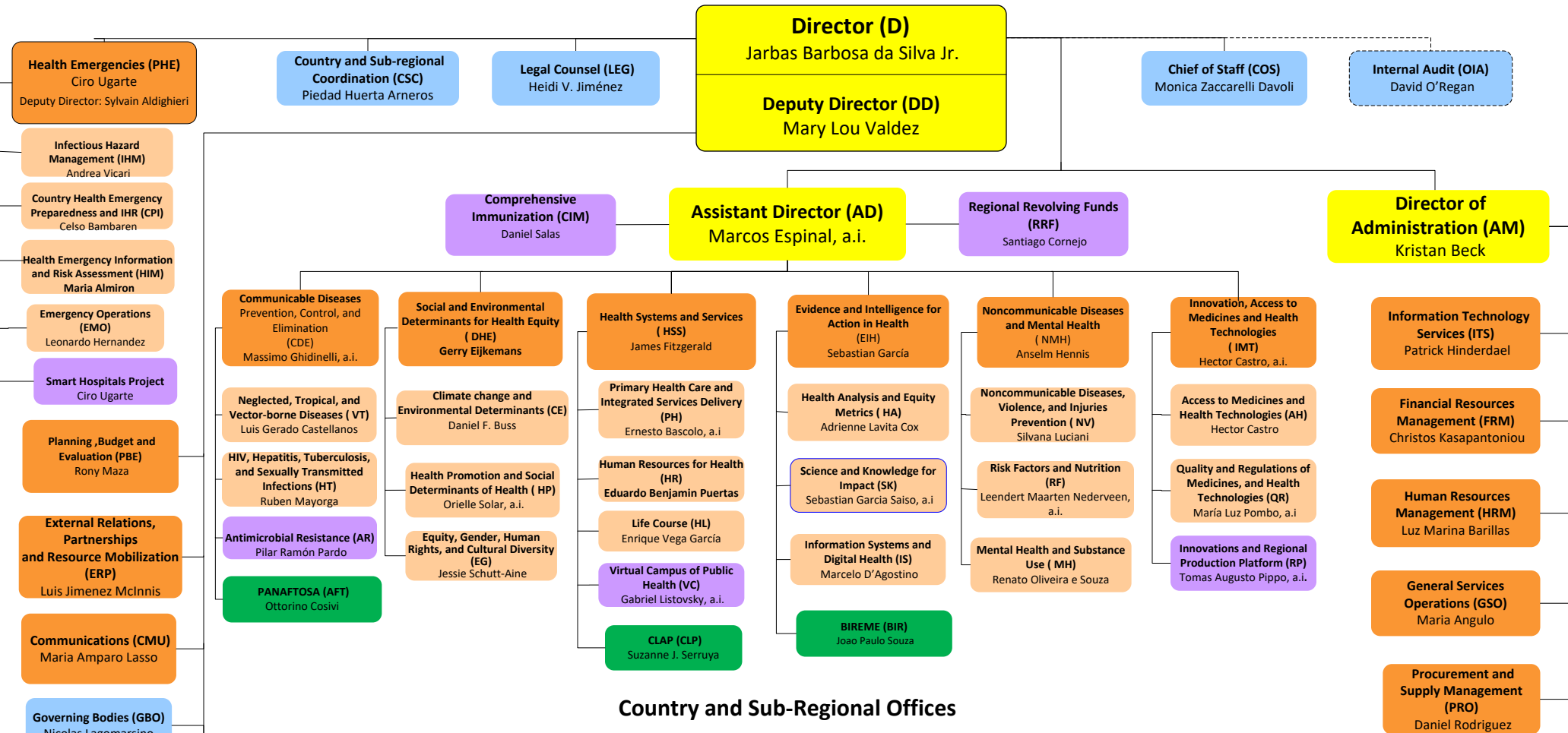


Organizational Chart of the Pan American Sanitary Bureau



Country and Sub-Regional Offices

| | | | | |
|--|---|--|--|---|
| ARGENTINA (ARG) Eva Jané-Llopis BARBADOS (BRB) & EASTERN CARIBBEAN COUNTRIES (ECC)* Amalia del Riego *Also serves: • Antigua and Barbuda • British Virgin Islands • Dominica • French Guiana • French St. Martin • Grenada • Guadeloupe • Martinique • Montserrat • St. Kitts and Nevis • St. Lucia • St. Vincent and the Grenadines | BAHAMAS (BHS)* Eldonna Boisson *Also serves: • Turks & Caicos Islands BELIZE (BLZ) Karen Lewis-Bell BOLIVIA (BOL) Alma Morales BRAZIL (BRA) Socorro Gross-Galiano CARIBBEAN SUB-REGION (CRB)* Dean Chambliss *Based in Barbados CENTRAL AMERICAN SUB-REGION (CAM)* Gerry Eijkemans *Based in Panama CHILE (CHL) Fernando Leanes | COLOMBIA (COL) Gina Tambini Gómez COSTA RICA (CRI) Alfonso Tenorio Gnecco CUBA (CUB) Jose Moya DOMINICAN REPUBLIC (DOM) Olivia Brathwaite, a.i. ECUADOR (ECU) Oscar Martin Barreneche EL SALVADOR (SLV) Giovanni Escalante GUATEMALA (GTM) Gerardo Alfaro GUYANA (GUY) Luis Felipe Codina | HAITI (HTI) Maureen Birmingham HONDURAS (HND) Ana Treasure JAMAICA (JAM)* Ian Stein *Also serves: • Bermuda • Cayman Islands MEXICO (MEX) Juan Manuel Sotelo, a.i. NICARAGUA (NIC) Enrique Perez-Flores, a.i. PANAMA (PAN) Ana Rivière Cinnamon PARAGUAY (PRY) Marcelo Korc | PERU (PER) Carlos Garzon SOUTH AMERICAN SUB-REGION (SAM)* *Based in Peru SURINAME (SUR) Lilian Reneau-Vernon, a.i. TRINIDAD & TOBAGO (TTO)* Erica Wheeler *Also serves: • Aruba • Bonaire • Curacao • Saba • Sint Eustatius • Sint Maarten URUGUAY (URY) Hernan Montenegro VENEZUELA (VEN) Cristian Morales |
|--|---|--|--|---|

