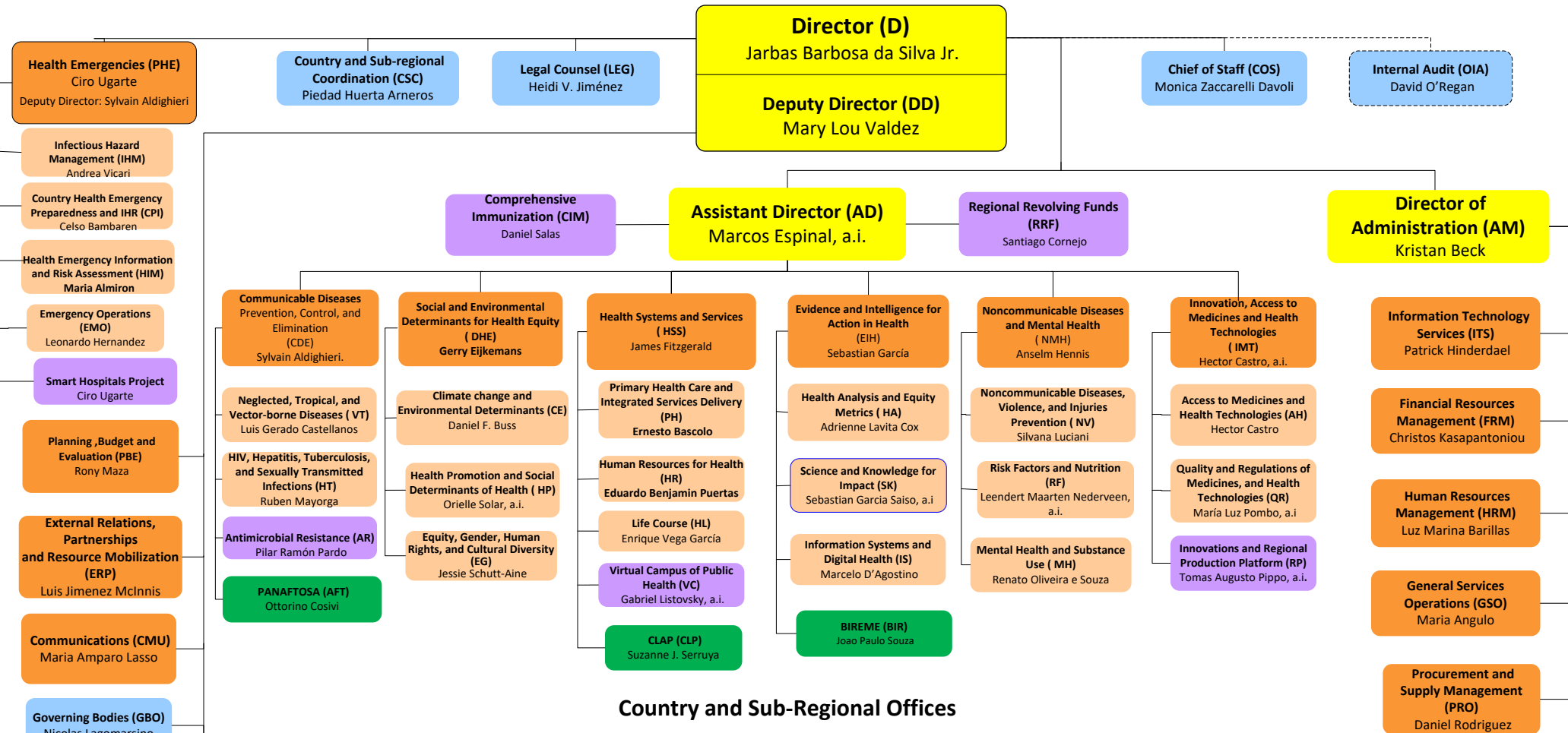


Organizational Chart of the Pan American Sanitary Bureau



Country and Sub-Regional Offices

ARGENTINA (ARG) Eva Jané-Llopis	BAHAMAS (BHS)* Eldonna Boisson *Also serves: • Turks & Caicos Islands	COLOMBIA (COL) Gina Tambini Gómez	HAITI (HTI) Maureen Birminghamhan	PERU (PER) Hernan Rodriguez Gonzalez, a.i
BARBADOS (BRB) & EASTERN CARIBBEAN COUNTRIES (ECC)* Amalia del Riego *Also serves: • Anguilla • Antigua and Barbuda • British Virgin Islands • Dominica • French Guiana • French St. Martin • Grenada • Guadeloupe • Martinique • Montserrat • St. Kitts and Nevis • St. Lucia • St. Vincent and the Grenadines	BELIZE (BLZ) Karen Lewis-Bell	COSTA RICA (CRI) Alfonso Tenorio Gnecco	HONDURAS (HND) Ana Treasure	SOUTH AMERICAN SUB-REGION (SAM)* Maria Dolores Perez Rosales, a.i *Based in Peru
	BOLIVIA (BOL) Alma Morales	CUBA (CUB) Gerardo de Cosio, a.i	JAMAICA (JAM)* Ian Stein *Also serves: • Bermuda • Cayman Islands	SURINAME (SUR) Noreen Jack, a.i
	BRAZIL (BRA) Socorro Gross-Galiano	DOMINICAN REPUBLIC (DOM) Alba María Roperio	MEXICO (MEX) Jose Gerardo Moya	TRINIDAD & TOBAGO (TTO)* Erica Wheeler *Also serves: • Aruba, Bonaire, Curacao, Saba, Sint Eustatius, Sint Maarten
	CARIBBEAN SUB-REGION (CRB)* Dean Chambliss *Based in Barbados	ECUADOR (ECU) Oscar Martin Barreneche	NICARAGUA (NIC) Enrique Perez-Flores, a.i	URUGUAY (URY) Hernan Montenegro
	CENTRAL AMERICAN SUB-REGION (CAM)* Federico Hernandez Pimentel, a.i *Based in El Salvador	EL SALVADOR (SLV) Giovanni Escalante	PANAMA (PAN) Ana Rivière Cinnamon	VENEZUELA (VEN) Cristian Morales
	CHILE (CHL) Fernando Leanes	GUATEMALA (GTM) Gerardo Alfaro	PARAGUAY (PRY) Marcelo Korc	
		GUYANA (GUY) Luis Felipe Codina		

