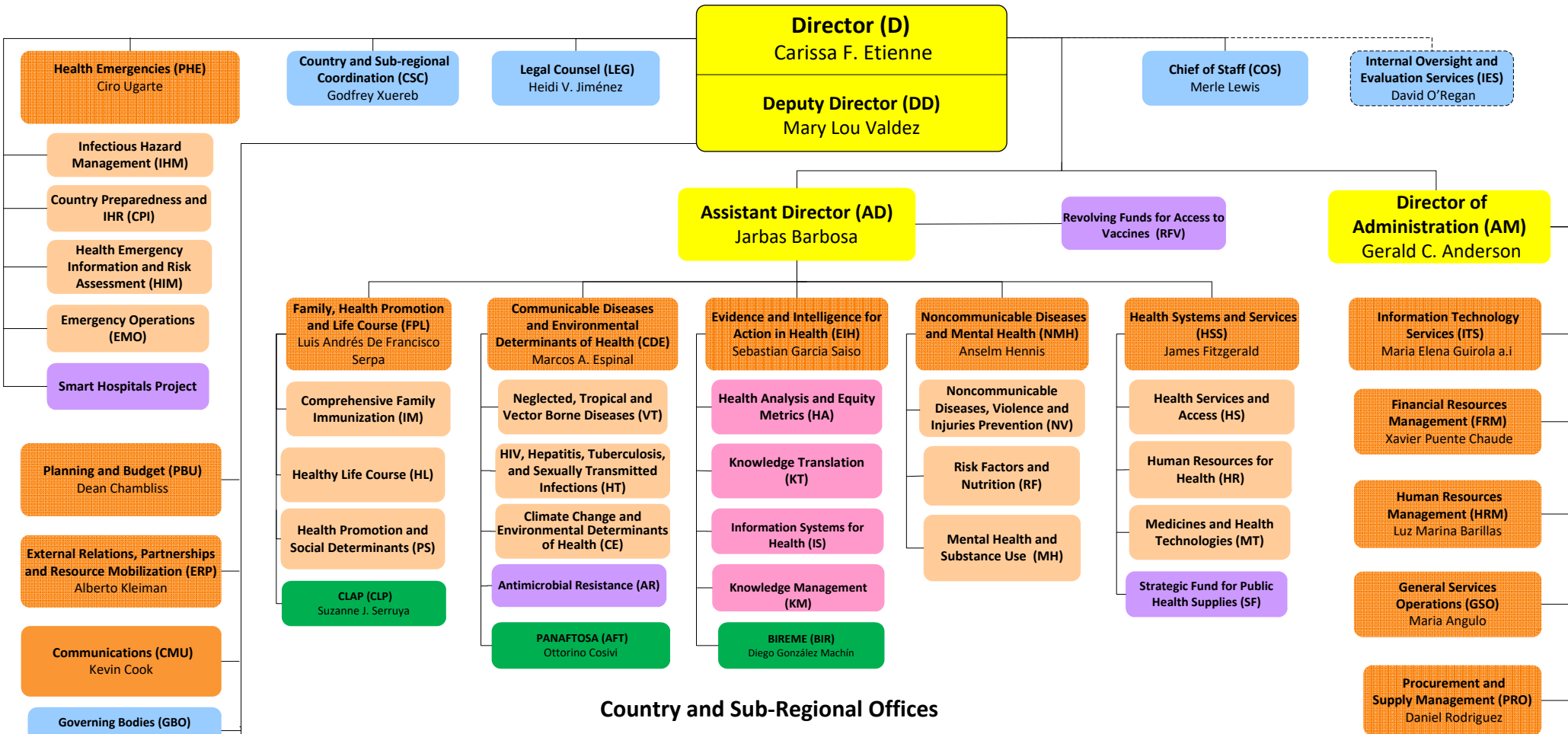


Organizational Chart of the Pan American Sanitary Bureau



Country and Sub-Regional Offices

ARGENTINA (ARG) Maureen Birmingham	BAHAMAS (BHS)* Esther de Gourville *Also serves: • Turks & Caicos Islands	COLOMBIA (COL) Gina Tambini Gómez	HAITI (HTI) Luis Felipe Codina	PERU (PER) Ruben Mayorga Sagastume, a.i
BARBADOS (BRB) & EASTERN CARIBBEAN COUNTRIES (ECC)* Yitades Gebre *Also serves: • Anguilla • Antigua and Barbuda • British Virgin Islands • Dominica • French Guiana • French St. Martin • Grenada • Guadeloupe • Martinique • Montserrat • St. Kitts and Nevis • St. Lucia • St. Vincent and the Grenadines	BELIZE (BLZ) Noreen Jack	COSTA RICA (CRI) María Dolores Perez-Rosales	HONDURAS (HND) Piedad Huerta Arneros	SOUTH AMERICAN SUB-REGION (SAM)* Rubén Mayorga Sagastume *Based in Peru
	BOLIVIA (BOL) Alfonso Tenorio Gnecco a.i	CUBA (CUB) Jose Moya	JAMAICA (JAM)* Bernadette Theodore-Gandi *Also serves: • Bermuda • Cayman Islands	SURINAME (SUR) Karen Lewis-Bell
	BRAZIL (BRA) Socorro Gross-Galiano	DOMINICAN REPUBLIC (DOM) Alma Morales	MEXICO (MEX) Cristian Morales	TRINIDAD & TOBAGO (TTO)* Erica Wheeler *Also serves: • Aruba • Bonaire • Curacao • Saba • Sint Eustatius • Sint Maarten
	CARIBBEAN SUB-REGION (CRB)* Jessie Schutt-Aine *Based in Barbados	ECUADOR (ECU) Gina Watson	NICARAGUA (NIC) Ana Solis-Ortega Treasure	URUGUAY (URY) Giovanni Escalante
	CENTRAL AMERICAN SUB-REGION (CAM)* *Based in El Salvador	EL SALVADOR (SLV) Carlos Garzón	PANAMA (PAN) Gerardo Alfaro	VENEZUELA (VEN) Enrique Perez-Gutierrez, a.i
	CHILE (CHL) Fernando Leanes	GUATEMALA (GTM) Oscar Martin Barreneche	PARAGUAY (PRY) Luis Roberto Escoto	
		GUYANA (GUY) William Adu-Krow		

