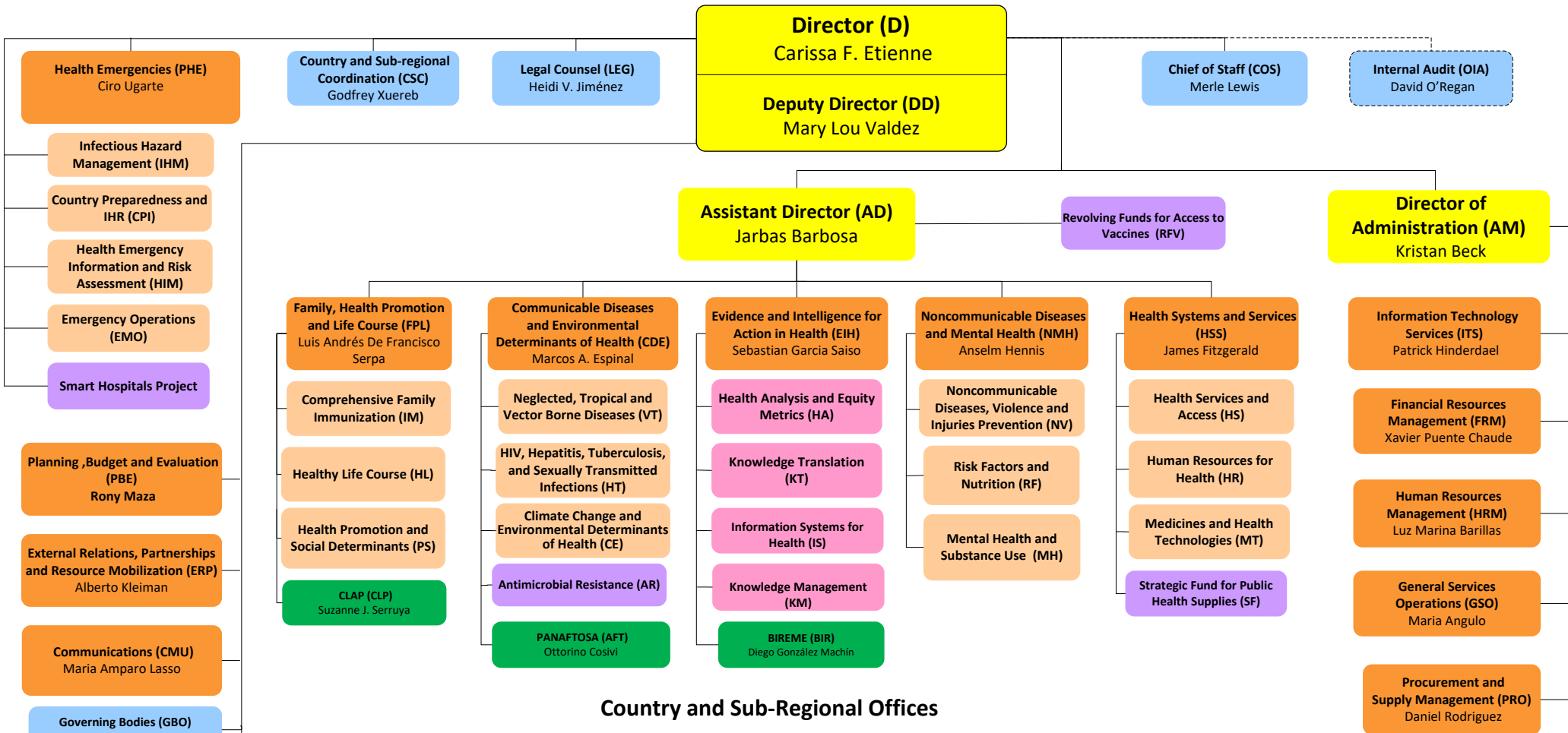


# Organizational Chart of the Pan American Sanitary Bureau



## Country and Sub-Regional Offices

<b>ARGENTINA (ARG)</b> Eva Jané-Llopis	<b>BAHAMAS (BHS)*</b> Eldona Boisson  *Also serves: • Turks & Caicos Islands	<b>COLOMBIA (COL)</b> Gina Tambini Gómez	<b>HAITI (HTI)</b> Maureen Birmingham	<b>PERU (PER)</b> Carlos Garzon
<b>BARBADOS (BRB) &amp; EASTERN CARIBBEAN COUNTRIES (ECC)*</b> Yitades Gebre  *Also serves: • Anguilla • Antigua and Barbuda • British Virgin Islands • Dominica • French Guiana • French St. Martin • Grenada • Guadeloupe • Martinique • Montserrat • St. Kitts and Nevis • St. Lucia • St. Vincent and the Grenadines	<b>BELIZE (BLZ)</b> Noreen Jack	<b>COSTA RICA (CRI)</b> María Dolores Perez-Rosales	<b>HONDURAS (HND)</b> Piedad Huerta Arneros	<b>SOUTH AMERICAN SUB-REGION (SAM)*</b> Pier Paolo Ballardelli *Based in Peru
	<b>BOLIVIA (BOL)</b> Alma Morales	<b>CUBA (CUB)</b> Jose Moya	<b>JAMAICA (JAM)*</b> Audrey Morris, a.i  *Also serves: • Bermuda • Cayman Islands	<b>SURINAME (SUR)</b> Karen Lewis-Bell
	<b>BRAZIL (BRA)</b> Socorro Gross-Galiano	<b>DOMINICAN REPUBLIC (DOM)</b> Olivier Ronveaux	<b>MEXICO (MEX)</b> Cristian Morales	<b>TRINIDAD &amp; TOBAGO (TTO)*</b> Erica Wheeler  *Also serves: • Aruba • Bonaire • Curacao • Saba • Sint Eustatius • Sint Maarten
	<b>CARIBBEAN SUB-REGION (CRB)*</b> Dean Chambliss *Based in Barbados	<b>ECUADOR (ECU)</b> Adrian Alberto Diaz, a.i	<b>NICARAGUA (NIC)</b> Ana Solis-Ortega Treasure	<b>URUGUAY (URY)</b> Sonia Quezada, a.i
	<b>CENTRAL AMERICAN SUB-REGION (CAM)*</b> Gina Watson *Based in El Salvador	<b>EL SALVADOR (SLV)</b> Giovanni Escalante	<b>PANAMA (PAN)</b> Gerardo Alfaro	<b>VENEZUELA (VEN)</b> Gerardo de Cosio, a.i
	<b>CHILE (CHL)</b> Fernando Leanes	<b>GUATEMALA (GTM)</b> Oscar Martín Barreneche	<b>PARAGUAY (PRY)</b> Haydee Padilla, a.i	
		<b>GUYANA (GUY)</b> Luis Felipe Codina		

