

Measles/Rubella Weekly Bulletin



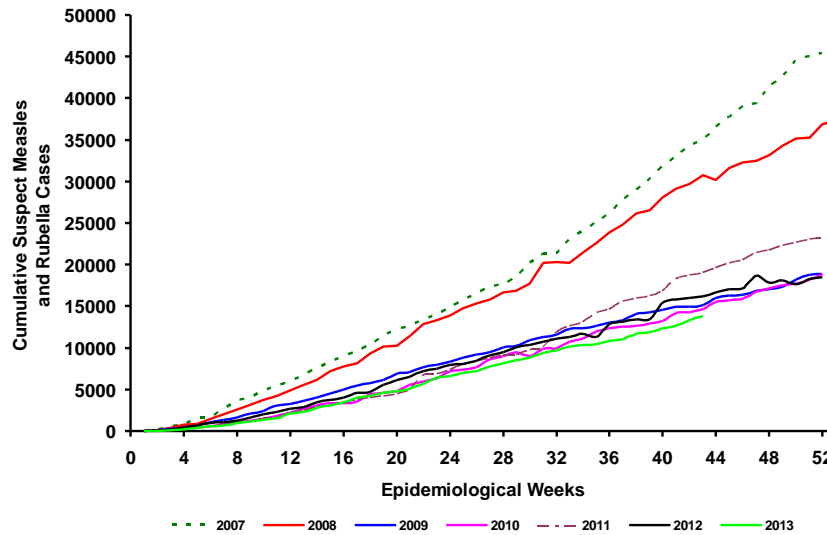
Comprehensive Family Immunization/Family, Gender and Life Course
Measles and Rubella Surveillance in the Americas



Vol. 19, No. 43

Week ending 26 October 2013

Cumulative suspected measles and rubella cases by epidemiological week, the Americas, 2007–2013*



Source: ISIS, MESS and country reports

* Data as of week 43, 2013.

Table.1
Classification of Suspect Measles, Rubella, and Congenital Rubella Syndrome (CRS) Cases for the Period of Weeks 01-43, 2013

Subregion and Country	Susp. Cases 2013	Measles Confirmed 2013			Year/Week Last Conf. Measles case	Rubella Confirmed 2013			Year/Week Last Conf. Rubella Case	Diagnosis of Discarded Cases 2013		Congenital Rubella Syndrome			Year/Week Last Conf. CRS Case	
		Clin.	Lab.	Total		Clin.	Lab.	Total		Dengue	Others	Susp.	Conf.	CRS*		
AND	BOL	83	0	0	0	2000/40	0	0	0	2006/03	1	78	22
	COL	1816	0	1	1	2013/25	0	0	0	2012/42	8	1733	260	0	0	2005/34
	ECU	2012/28	2004/45
	PER	334	0	0	0	2008/18	0	0	0	2006/45	0	311	0	2007/16
BRA	VEN	212	0	0	0	2012/16	0	0	0	2007/51	21	89	1	0	0	...
	BRA	3941	0	114	114	2013/35	0	0	0	2009/41	0	2928	97	0	0	2009/34
	CAP	19	0	0	0	2005/22	0	0	0	2001/42	3	15	0	0
	GTM	229	0	0	0	1998/05	0	0	0	2006/30	58	165	5	0	0	2005/00
	HND	126	0	0	0	1997/29	0	0	0	2004/11	77	40	62	0	0	2001/00
	NIC	152	0	0	0	1994/14	0	0	0	2004/19	5	117	27	0	...	2005/00
	PAN	111	0	0	0	2011/20	0	0	0	2002/48	0	103	2	0
	SLV	308	0	0	0	2001/19	0	0	0	2006/30	90	0	0	2001/00
	CAR	301	0	0	0	2011/48	0	0	0	2008/18	0	196	0	1999/00
LAC	CUB	968	0	0	0	1993/27	0	0	0	2004/06	0	968	0	0
	DOM	62	0	0	0	2011/18	0	0	0	2006/44	0	41	0
	GLP	2	0	0	0	2011/28	0	0	0	...	0	2	0	2005/00
	GUF	1	0	0	0	2011/26	0	0	0	2010/06	0	1	0
	HTI	339	0	0	0	2001/39	0	0	0	2006/21	0	253	43	0
	MTQ	0	0	0	0	2011/27	0	0	0	...	0	0	0
	PRI
	MEX	4017	0	0	0	2011/12	0	0	0	2012/49	0	4011	0	0
NOA	CAN	45	45 ^a	2013/43	0	1	1	2013/15	0	0	0	0	...	2011/12
	USA	166	166 ^a	2013/34	0	6	6	2013/04	0	0	0	0	...	2012/44
SOC	ARG	240	0	0	0	2012/20	0	0	0	2011/20	1	186	81	2009/27
	CHL	115	0	0	0	2011/25	0	0	0	2011/25	0	109	114	0	0	...
	PRY	404	0	0	0	1998/44	0	0	0	2005/21	142	246	2	0	0	2003/06
	URY	0	0	0	0	1999/08	0	0	0	2001/37	0	0	0	0	0	...
TOTAL	13780	0	326	326	--	0	7	7	--	316	11592	806	0	0	--	

*Congenital Rubella Infection; (a) Provisional data;

...No report received



Measles/Rubella Surveillance

Table No.2
Infection Source of Measles and Rubella Confirmed Cases for the Period of Weeks 01-43, 2013

Subregion and Country	Measles				Rubella			
	I	IR	CAC	U	I	IR	CAC	U
AND								
BOL	1							
COL								
ECU								
PER								
VEN				105				
BRA	4	5						
CAP								
CRI								
GTM								
HND								
NIC								
PAN								
SLV								
CAR								
LAC								
CAR								
CUB								
DOM								
GLP								
GUF								
HTI								
MTQ								
PRI								
MEX								
NOA	10	28		7	1			
CAN	52	111		3	4			2
USA								
SOC								
ARG								
CHL								
PRY								
URY								
TOTAL	67	144		115	5			2

Table No.3
Measles/Rubella Suspect Cases Under Investigation for the Period of Weeks 01-43, 2013

Country	Pending Cases 2012	Cumulative 2013	Week of Onset							% Pend.Cases
			1-38	39	40	41	42	43		
BOL	1	4	4	5
COL	0	74	55	4	3	4	5	3	...	4
ECU	0
PER	0	23	6	5	0	7	3	2	...	7
VEN	0	95	95	0	0	0	0	45
BRA	0	538	14
CRI	0	1	1	0	0	0	0	5
GTM	0	6	5	0	1	0	0	0	...	3
HND	0	4	0	0	1	1	1	1	...	3
NIC	0	30	17	3	9	1	0	0	...	20
PAN	0	8	8	0	0	0	0	0	...	7
SLV	0	42	24	3	4	1	4	6	...	14
CAR	0	104	74	1	2	10	14	3	...	35
CUB	0	0	0	0	0	0	0	0	...	0
DOM	0	21	20	1	0	0	0	0	...	34
GLP	0	0	0	0	0	0	0	0	...	0
GUF	0	0	0	0	0	0	0	0	...	0
HTI	0	86	66	6	8	3	1	2	...	25
MTQ	0	0	0	0	0	0	0	0	...	0
PRI
MEX	0	6	5	1	0	0	0	0	...	0
CAN
USA
ARG	247	51	42	7	2	0	0	0	...	21
CHL	0	6	1	0	2	1	2	0	...	5
PRY	1	16	16	0	0	0	0	0	...	4
URY	0	0	0	0
TOTAL	249	1115	439	31	32	28	30	17		8

I: Imported; IR: Import-related; CAC: Country-acquired case
U: Unknown.

... No report received

Table 4.
Indicators of Integrated Measles/Rubella Surveillance for the Period of Weeks 01-43, 2013

Subregion and Country	Sites Reporting Weekly		% Cases with Adequate Investigation	% Cases with Adequate Sample	% Blood Samples Received in Lab. ≤5 days	% Lab. Results ≤4 days	Rate of Suspected Cases Last 52 weeks (2012/44-2013/43)		
	Total Units	% This Week					Measles/Rubella (100,000 pop.)	CRS (10,000 lb)	
AND	BOL	2887	...	99	99	80	92	1.1	0.8
	COL	5029	...	78	95	90	95	4.8	3.4
	ECU	2184
	PER	7325	...	90	96	77	51	1.5	0.0
	VEN	13092	...	70	85	16	14	0.9	0.0
BRA	BRA	6558	...	0	0	0	0	0.3	0.4
CAP	CRI	57	...	32	74	74	63	0.5	0.0
	GTM	1506	12	0	93	71	83	1.9	0.1
	HND	469	95	38	95	71	97	1.8	3.6
	NIC	185	...	91	99	87	86	2.8	2.0
	PAN	222	...	82	94	72	90	3.8	0.3
	SLV	1206	94	79	95	73	70	0.3	17.3
CAR	CAR	719	42	13	17	29	77	4.7	0.0
LAC	CUB	150	100	100	100	100	100	10.0	0.0
	DOM	252	...	6	98	67	61	0.8	0.0
	GLP	0.4	...
	GUF	0.4	...
	HTI	104	93	91	99	84	77	3.4	1.6
	MTQ	0.0	...
	PRI	0.0	...
MEX	MEX	11138	...	98	4.3	0.0
NOA	CAN
	USA
SOC	ARG	779	0	13	92	67	49	0.7	2.3
	CHL	569	0	53	94	93	94	0.9	4.6
	PRY	929	69	83	94	95	89	8.4	0.1
	URY	155	0	0	0	0	0	0.0	0.0
Total and Average*		55515	60	85	92	81	83	2.1	1.0

*Weighted

... No report received