

# Measles/Rubella Weekly Bulletin



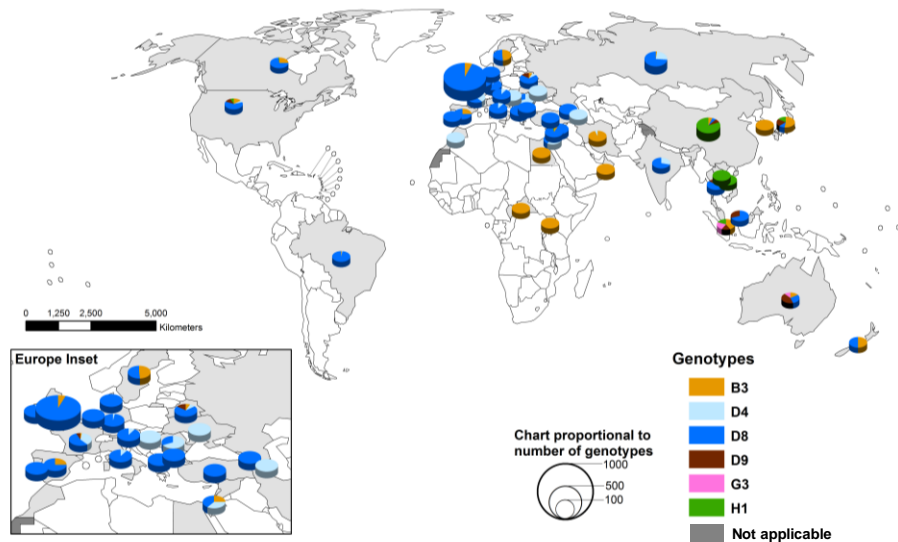
Comprehensive Family Immunization/Family, Gender and Life Course  
Measles and Rubella Surveillance in the Americas



Vol. 20, No. 10

Week ending 8 March 2014

## Global distribution of measles genotypes, 2013\*



\*Data source: MeaNS Database  
Updated on 03 February 2014

The boundaries and names shown and the designations used on this map do not imply the expression of any opinion whatsoever on the part of the World Health Organization concerning the legal status of any country, territory, city or area or of its authorities, or concerning the delimitation of its frontiers or boundaries. Dotted lines on maps represent approximate border lines for which there may not yet be full agreement. ©WHO 2014. All rights reserved.



**Table 1**  
Classification of Suspect Measles, Rubella, and Congenital Rubella Syndrome (CRS) Cases for the Period of Weeks 01-10, 2014

Subregion and Country	Susp. Cases 2014	Measles Confirmed 2014			Year/Week Last Conf. Measles case	Rubella Confirmed 2014			Year/Week Last Conf. Rubella Case	Diagnosis of Discarded Cases 2014		Congenital Rubella Syndrome			Year/Week Last Conf. CRS Case	
		Clin.	Lab.	Total		Clin.	Lab.	Total		Dengue	Others	Susp.	Conf.	CRS*		
AND	BOL	7	0	0	0	2000/40	0	0	0	2006/03	0	4	0	...	...	...
	COL	231	0	0	0	2013/25	0	0	0	2012/42	0	208	56	0	0	2005/34
	ECU	...	...	...	...	2012/28	...	...	...	2004/45	0	0	0	...	...	...
	PER	73	0	0	0	2008/18	0	0	0	2006/45	0	63	0	0	...	2007/16
	VEN	0	0	0	0	2012/16	0	0	0	2007/51	0	0	0	...	...	...
BRA	BRA	921	0	120	120	2014/10	0	0	0	2009/41	0	348	8	0	...	2009/34
	CAP	4	0	0	0	2005/22	0	0	0	2001/42	0	0	0	0	...	...
	GTM	17	0	0	0	1998/05	0	0	0	2006/30	1	15	1	...	...	2005/00
	HND	6	0	0	0	1997/29	0	0	0	2004/11	0	0	3	0	0	2001/00
	NIC	9	0	0	0	1994/14	0	0	0	2004/19	0	5	5	0	...	2005/00
	PAN	68	0	0	0	2011/20	0	0	0	2002/48	0	66	0	...	...	...
	SLV	124	0	0	0	2001/19	0	0	0	2006/30	0	0	0	0	...	2001/00
	CAR	74	0	0	0	2011/48	0	0	0	2008/18	0	31	0	...	...	1999/00
	LAC	CUB	103	0	0	0	1993/27	0	0	0	2004/06	0	103	0	0	...
DOM	3	0	0	0	2011/18	0	0	0	2006/44	0	3	0	...	...	...	
GLP	0	0	0	0	2011/28	0	0	0	...	0	0	0	0	...	2005/00	
GUF	0	0	0	0	2011/26	0	0	0	2010/06	0	0	0	0	...	...	
HTI	33	0	0	0	2001/39	0	0	0	2006/21	0	0	1	0	0	...	
MTQ	0	0	0	0	2011/27	0	0	0	...	0	0	0	0	...	...	
PRI	...	...	...	...	...	...	...	...	...	...	...	...	...	...	...	...
MEX	MEX	307	0	2	2	2014/04	0	0	0	2012/49	0	305	0	0	0	...
	NOA	...	0	22	22 <sup>a</sup>	2014/09	0	0	0	2013/15	0	0	0	0	...	2011/12
USA	...	...	54	54 <sup>a</sup>	2014/08	0	0	0	2013/48	...	...	...	...	...	...	2012/44
	SOC	ARG	29	0	0	0	2012/20	0	0	0	2011/20	0	16	8	...	...
CHL	32	0	0	0	0	2011/25	0	0	0	2011/25	0	19	0	0	0	...
PRY	38	0	0	0	0	1998/44	0	0	0	2005/21	0	31	2	0	0	2003/06
URY	0	...	...	...	...	1999/08	...	...	...	2001/37	0	0	0	...	...	...
<b>TOTAL</b>	<b>2079</b>	<b>0</b>	<b>198</b>	<b>198</b>	<b>--</b>	<b>0</b>	<b>0</b>	<b>0</b>	<b>--</b>	<b>1</b>	<b>1217</b>	<b>84</b>	<b>0</b>	<b>0</b>	<b>0</b>	<b>--</b>

\*Congenital Rubella Infection; (a) Provisional data;

...No report received



# Measles/Rubella Surveillance

Table No.2

Infection Source of Measles and Rubella Confirmed Cases for the Period of Weeks 01-10, 2014

Subregion and Country	Measles				Rubella			
	I	IR	CAC	U	I	IR	CAC	U
AND								
BOL								
COL								
ECU								
PER								
VEN								
BRA				120				
CAP								
CRI								
GTM								
HND								
NIC								
PAN								
SLV								
CAR								
LAC								
CUB								
DOM								
GLP								
GUF								
HTI								
MTQ								
PRI								
MEX				2				
NOA				6				
SOC				9				
USA	7	9						
ARG		45						
CHL								
PRY								
URY								
<b>TOTAL</b>	<b>7</b>	<b>54</b>	<b>0</b>	<b>137</b>	<b>0</b>	<b>0</b>	<b>0</b>	<b>0</b>

Table No.3

Measles/Rubella Suspect Cases Under Investigation for the Period of Weeks 01-10, 2014

Country	Pending Cases 2013	Cumulative 2014	Week of Onset							% Pend.Cases
			1-5	6	7	8	9	10		
BOL	0	3	3	0	0	0	0	...	43	
COL	55	23	8	5	3	2	3	2	10	
ECU	...	...	...	...	...	...	...	...	...	
PER	18	10	2	1	2	1	1	3	14	
VEN	14	0	0	0	0	0	0	0	0	
BRA	379	453	0	0	0	0	453	0	49	
CRI	4	4	3	1	0	0	0	0	100	
GTM	14	1	1	0	0	0	0	0	6	
HND	1	0	0	0	0	0	0	0	0	
NIC	0	4	2	0	0	0	0	2	44	
PAN	3	2	0	0	0	1	1	0	3	
SLV	367	124	49	16	18	15	15	11	100	
CAR	101	43	15	3	8	9	7	1	58	
CUB	0	0	0	0	0	0	0	0	0	
DOM	0	0	0	0	0	0	0	...	0	
GLP	0	0	0	0	0	0	0	...	0	
GUF	0	0	0	0	0	0	0	...	0	
HTI	117	33	17	2	12	2	0	0	100	
MTQ	0	0	0	0	0	0	0	...	0	
PRI	...	...	...	...	...	...	...	...	...	
MEX	35	2	0	0	0	0	0	2	1	
CAN	...	...	...	...	...	...	...	...	...	
USA	...	...	...	...	...	...	...	...	...	
ARG	84	13	8	4	0	1	0	...	45	
CHL	50	13	3	1	2	2	3	2	41	
PRY	6	7	7	0	0	0	0	0	18	
URY	0	...	...	...	...	...	...	...	...	
<b>TOTAL</b>	<b>1248</b>	<b>735</b>	<b>118</b>	<b>33</b>	<b>45</b>	<b>33</b>	<b>483</b>	<b>23</b>	<b>35</b>	

I: Imported; IR: Import-related; CAC: Country-acquired case  
U: Unknown.

... No report received

Table 4.

Indicators of Integrated Measles/Rubella Surveillance for the Period of Weeks 01-10, 2014

Subregion and Country	Sites Reporting Weekly		% Cases with Adequate Investigation	% Cases with Adequate Sample	% Blood Samples Received in Lab. ≤5 days	% Lab. Results ≤4 days	Rate of Suspected Cases Last 52 weeks (2013/11-2014/10)		
	Total Units	% This Week					Measles/Rubella (100,000 pop.)	CRS (10,000 lb)	
AND	BOL	...	...	100	100	57	29	1.2	0.8
	COL	5257	90	79	91	94	97	4.9	4.2
	ECU	2184	...	...	...	...	...	0.0	0.0
	PER	...	...	84	89	73	47	1.5	0.0
	VEN	13092	...	0	0	0	0	1.5	0.1
BRA	BRA	9724	66	99	84	84	61	2.9	0.4
CAP	CRI	57	...	25	100	50	50	0.5	0.0
	GTM	1506	60	41	88	59	76	2.0	0.1
	HND	469	95	50	100	100	100	2.0	2.1
	NIC	185	100	67	100	88	100	2.8	3.1
	PAN	223	74	91	97	74	89	5.6	0.3
	SLV	893	0	16	24	60	90	6.3	0.0
CAR	CAR	759	44	4	70	8	90	4.3	0.0
LAC	CUB	150	100	100	100	100	100	10.5	0.0
	DOM	166	...	33	100	100	33	0.8	0.0
	GLP	...	...	...	...	...	...	0.4	...
	GUF	...	...	...	...	...	...	0.4	...
	HTI	116	97	91	97	83	30	3.7	1.9
	MTQ	...	...	...	...	...	...	0.0	...
	PRI	...	...	...	...	...	...	...	...
MEX	MEX	11138	...	98	...	...	...	3.8	...
NOA	CAN	...	...	...	...	...	...	...	...
	USA	...	...	...	...	...	...	...	...
SOC	ARG	779	0	24	97	50	15	0.8	1.4
	CHL	743	0	50	58	100	94	1.0	4.6
	PRY	977	91	63	84	90	97	4.8	0.3
	URY	155	...	...	...	...	...	0.0	0.0
<b>Total and Average*</b>		<b>48573</b>	<b>74</b>	<b>83</b>	<b>84</b>	<b>81</b>	<b>75</b>	<b>2.9</b>	<b>0.8</b>

\*Weighted