

Measles/Rubella Weekly Bulletin



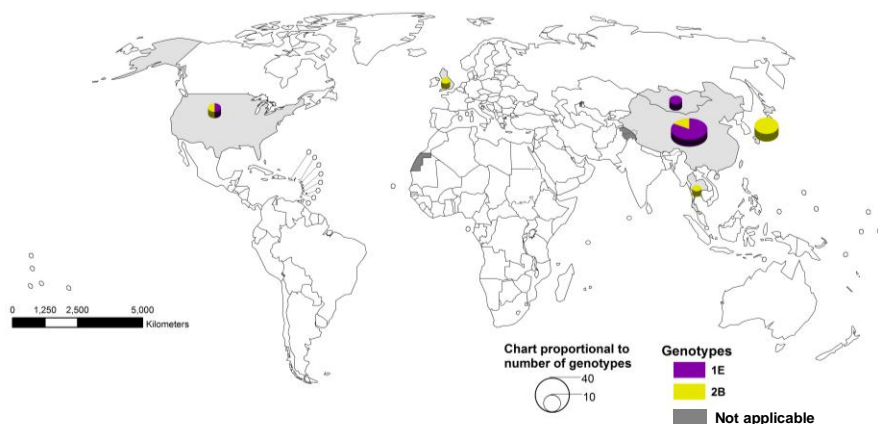
Comprehensive Family Immunization/Family, Gender and Life Course Measles and Rubella Surveillance in the Americas



Vol. 20, No. 11

Week ending 15 March 2014

Global distribution of rubella genotypes, 2013*



Data source: RubeNS Database
Updated on 03 February 2014

The boundaries and names shown and the designations used on this map do not imply the expression of any opinion whatsoever on the part of the World Health Organization concerning the legal status of any country, territory, city or area or of its authorities, or concerning the delimitation of its frontiers or boundaries. Dotted lines on maps represent approximate border lines for which there may not yet be full agreement. ©WHO 2014. All rights reserved.



Table.1
Classification of Suspect Measles, Rubella, and Congenital Rubella Syndrome (CRS) Cases for the Period of Weeks 01-11, 2014

Subregion and Country	Susp. Cases 2014	Measles Confirmed 2014			Year/Week Last Conf. Measles case	Rubella Confirmed 2014			Year/Week Last Conf. Rubella Case	Diagnosis of Discarded Cases 2014		Congenital Rubella Syndrome			Year/Week Last Conf. CRS Case		
		Clin.	Lab.	Total		Clin.	Lab.	Total		Dengue	Others	Susp.	Conf.	CRI*			
AND	BOL	7	0	0	0	2000/40	0	0	0	2006/03	0	4	0	
	COL	231	0	0	0	2013/25	0	0	0	2012/42	0	208	56	0	0	2005/34	
	ECU	0	2012/28	2004/45	0	0	0	
	PER	84	0	0	0	2008/18	0	0	0	2006/45	0	73	0	0	...	2007/16	
	VEN	4	0	0	0	2012/16	0	0	0	2007/51	0	1	0	
BRA	BRA	1030	0	136	136	2014/10	0	0	0	2009/41	0	676	8	0	...	2009/34	
	CAP	4	0	0	0	2005/22	0	0	0	2001/42	0	0	0	0	
	GTM	17	0	0	0	1998/05	0	0	0	2006/30	1	15	1	2005/00	
	HND	8	0	0	0	1997/29	0	0	0	2004/11	0	0	3	0	0	2001/00	
	NIC	12	0	0	0	1994/14	0	0	0	2004/19	0	5	7	0	...	2005/00	
	PAN	77	0	0	0	2011/20	0	0	0	2002/48	0	75	0	
	SLV	136	0	0	0	2001/19	0	0	0	2006/30	0	1	0	0	...	2001/00	
	CAR	78	0	0	0	2011/48	0	0	0	2008/18	0	46	0	1999/00	
	LAC	CUB	115	0	0	0	1993/27	0	0	0	2004/06	0	115	0	0
	DOM	4	0	0	0	2011/18	0	0	0	2006/44	0	4	0	
GLP	0	0	0	0	2011/28	0	0	0	0	...	2005/00		
GUF	0	0	0	0	2011/26	0	0	0	2010/06	0		
HTI	36	0	0	0	2001/39	0	0	0	2006/21	0	0	1	0	0	...		
MTQ	0	0	0	0	2011/27	0	0	0	0		
PRI		
MEX	MEX	347	0	2	2	2014/04	0	0	0	2012/49	0	345	0	0	0	...	
NOA	CAN	...	0	33	33 ^a	2014/11	0	0	0	2013/15	0	0	0	0	...	2011/12	
USA	78	78 ^a	2014/11	0	0	0	2013/48	2012/44		
SOC	ARG	43	0	0	0	2012/20	0	0	0	2011/20	0	20	8	2009/27	
CHL	36	0	0	0	2011/25	0	0	0	2011/25	0	25	0	0	0	0	...	
PRY	85	0	0	0	1998/44	0	0	0	2005/21	0	74	2	0	0	0	2003/06	
URY	0	1999/08	2001/37	0	0	0		
TOTAL	2354	0	249	249	--	0	0	0	--	1	1687	86	0	0	--		

*Congenital Rubella Infection; (a) Provisional data;

...No report received



Measles/Rubella Surveillance

Table No.2

Infection Source of Measles and Rubella Confirmed Cases for the Period of Weeks 01-11, 2014

Subregion and Country	Measles				Rubella			
	I	IR	CAC	U	I	IR	CAC	U
AND								
BOL								
COL								
ECU								
PER								
VEN								
BRA				136				
CAP								
CRI								
GTM								
HND								
NIC								
PAN								
SLV								
CAR								
LAC								
CUB								
DOM								
GLP								
GUF								
HTI								
MTQ								
PRI								
MEX				2				
NOA								
CAN	9	15		9				
USA		45		33				
SOC								
ARG								
CHL								
PRY								
URY								
TOTAL	9	60	0	180	0	0	0	0

Table No.3

Measles/Rubella Suspect Cases Under Investigation for the Period of Weeks 01-11, 2014

Country	Pending Cases 2013	Cumulative 2014	Week of Onset							% Pend.Cases
			1-6	7	8	9	10	11		
BOL	0	3	3	0	0	0	43	
COL	55	23	13	3	2	3	2	...	10	
ECU	
PER	15	11	2	2	0	1	5	1	13	
VEN	14	3	3	0	0	0	0	0	75	
BRA	320	218	0	0	0	0	218	0	21	
CRI	4	4	4	0	0	0	0	0	100	
GTM	12	1	1	0	0	0	0	0	6	
HND	1	0	0	0	0	0	0	0	0	
NIC	0	7	2	0	0	0	2	3	58	
PAN	3	2	0	0	1	1	0	0	3	
SLV	251	131	63	16	15	14	12	11	96	
CAR	103	32	18	5	2	3	3	1	41	
CUB	0	0	0	0	0	0	0	0	0	
DOM	0	0	0	0	0	0	0	0	0	
GLP	0	0	0	0	0	0	0	0	0	
GUF	0	0	0	0	0	0	0	0	0	
HTI	117	36	19	12	2	1	1	1	100	
MTQ	0	0	0	0	0	0	0	0	0	
PRI	
MEX	35	2	0	0	0	0	2	0	1	
CAN	
USA	
ARG	84	23	16	1	3	2	1	0	53	
CHL	50	11	3	1	1	2	4	0	31	
PRY	6	8	0	0	1	3	4	0	9	
URY	0	
TOTAL	1070	515	147	40	27	30	254	17	22	

I: Imported; IR: Import-related; CAC: Country-acquired case
U: Unknown.

... No report received

Table 4.

Indicators of Integrated Measles/Rubella Surveillance for the Period of Weeks 01-11, 2014

Subregion and Country	Sites Reporting Weekly		% Cases with Adequate Investigation	% Cases with Adequate Sample	% Blood Samples Received in Lab. ≤5 days	% Lab. Results ≤4 days	Rate of Suspected Cases Last 52 weeks (2013/12-2014/11)		
	Total Units	% This Week					Measles/Rubella (100,000 pop.)	CRS (10,000 lb)	
AND	BOL	100	100	57	29	1.2	0.8
	COL	5257	0	79	91	94	97	4.9	4.2
	ECU	2184	0.0	0.0
	PER	83	90	74	49	1.5	0.0
	VEN	13092	...	100	100	75	25	1.5	0.1
BRA	BRA	12907	83	99	84	84	61	2.9	0.4
CAP	CRI	57	...	25	100	50	50	0.5	0.0
	GTM	1506	57	41	88	59	76	2.0	0.1
	HND	469	95	50	100	88	100	2.0	2.1
	NIC	185	100	58	83	78	89	2.8	3.2
	PAN	223	77	92	97	74	91	5.6	0.3
	SLV	893	...	18	28	63	89	6.3	0.0
CAR	CAR	759	51	4	67	8	90	4.3	0.0
LAC	CUB	150	100	100	100	100	100	10.5	0.0
	DOM	25	100	100	50	0.8	0.0
	GLP	0.4	...
	GUF	0.4	...
	HTI	116	98	92	97	76	27	3.7	1.9
	MTQ	0.0	...
	PRI
MEX	MEX	11138	...	98	3.8	...
NOA	CAN
	USA
SOC	ARG	779	0	19	91	51	16	0.8	1.4
	CHL	770	0	58	69	95	95	1.0	4.6
	PRY	982	93	53	95	94	97	4.8	0.3
	URY	155	0.0	0.0
Total and Average*		51622	82	89	89	79	57	2.9	0.8

*Weighted