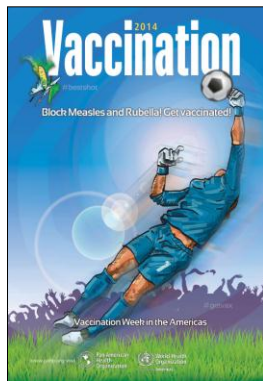


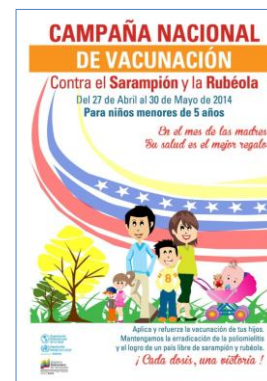
Measles/Rubella Weekly Bulletin



In the context of Vaccination Week in the Americas, around **360,000** individuals at risk of getting measles and rubella will be vaccinated in 7 countries (**CHI, HAI, HON, NIC, PAN, PER, URU**).



Paraguay will be vaccinating around **740,000** children aged 1-5 years old in a follow-up campaign before the FIFA World Cup.



Under the Spanish slogan, *En el Mes de las Madres tu Salud es el Mejor Regalo* ("On Mother's Day Month, children's health is the best gift"), on 27 April, **Venezuela** launched a campaign targeting **2.7 million** of children aged less than 5 years of age.

Table 1
Classification of Suspect Measles, Rubella, and Congenital Rubella Syndrome (CRS) Cases for the Period of Weeks 01-18, 2014

Subregion and Country	Susp. Cases 2014	Measles Confirmed 2014			Year/Week Last Conf. Measles case	Rubella Confirmed 2014			Year/Week Last Conf. Rubella Case	Diagnosis of Discarded Cases 2014		Congenital Rubella Syndrome			Year/Week Last Conf. CRS Case	
		Clin.	Lab.	Total		Clin.	Lab.	Total		Dengue	Others	Susp.	Conf.	CRS*		
AND	BOL	7	0	0	0	2000/40	0	0	0	2006/03	0	4	0
	COL	483	0	0	0	2013/25	0	0	0	2012/42	0	442	96	0	0	2005/34
	ECU	2012/28	2004/45
	PER	125	0	0	0	2008/18	0	0	0	2006/45	0	102	0	0	...	2007/16
	VEN	134	0	0	0	2012/16	0	0	0	2007/51	14	90	4
BRA	BRA	1729	5	167	172	2014/14	0	0	0	2009/41	0	1268	17	0	...	2009/34
	CRI	11	0	0	0	2005/22	0	0	0	2001/42	1	8	0	0
	GTM	38	0	0	0	1998/05	0	0	0	2006/30	1	36	1	2005/00
	HND	13	0	0	0	1997/29	0	0	0	2004/11	0	0	6	0	0	2001/00
	NIC	24	0	0	0	1994/14	0	0	0	2004/19	0	7	8	0	...	2005/00
	PAN	108	0	0	0	2011/20	0	0	0	2002/48	0	104	0
	SLV	255	0	0	0	2001/19	0	0	0	2006/30	0	7	0	0	...	2001/00
	CAR	130	0	0	0	2011/48	0	0	0	2008/18	0	118	0	1999/00
	LAC	CUB	221	0	0	0	1993/27	0	0	0	2004/06	0	221	0	0	...
	DOM	5	0	0	0	2011/18	0	0	0	2006/44	0	5	0
	GLP	0	0	0	0	2011/28	0	0	0	0	2005/00
	GUF	0	0	0	0	2011/26	0	0	0	2010/06	0
	HTI	50	0	0	0	2001/39	0	0	0	2006/21	0	44	6	0	0	...
	MTQ	0	0	0	0	2011/27	0	0	0	0
	PRI
MEX	MEX	1081	0	2	2	2014/04	0	0	0	2012/49	0	880	0	0	0	...
NOA	CAN	...	385 ^a	100	485 ^b	2014/18	0	1	1	2014/10	0	0	0	0	...	2011/12
	USA	154	154 ^b	2014/16	0	1	1	2014/16	2012/44
SOC	ARG	52	0	0	0	2012/20	0	0	0	2011/20	0	33	8	2009/27
	CHL	37	0	0	0	2011/25	0	0	0	2011/25	0	25	0	0	0	...
	PRY	119	0	0	0	1998/44	0	0	0	2005/21	0	107	2	0	0	2003/06
	URY	1999/08	2001/37
TOTAL	4622	390	423	813	--	0	2	2	--	16	3501	148	0	0	--	

*Congenital Rubella Infection; (a) Provisional data and subject to change. Cases are epidemiologically linked and pending investigation. (b)Provisional data.

...No report received



Measles/Rubella Surveillance

Table No.2
Infection Source of Measles and Rubella Confirmed Cases for the Period of Weeks 01-18, 2014

Subregion and Country		Measles				Rubella			
		I	IR	CAC	U	I	IR	CAC	U
AND	BOL								
	COL								
BRA	ECU								
	PER								
CAP	VEN				172				
	BRA								
CAR	CRI								
	GTM								
LAC	HND								
	NIC								
MEX	PAN								
	SLV								
NOA	CAR								
	CUB								
SOC	DOM								
	GLP								
URY	GUF								
	HTI								
TOTAL	MTQ								
	PRI								
MEX	MEX				2				
	CAN	19	35		431	1			
NOA	USA	62	85		7	1			
	ARG								
SOC	CHL								
	PRY								
TOTAL	URY								
		81	120		612	2	0	0	0

Table No.3
Measles/Rubella Suspect Cases Under Investigation for the Period of Weeks 01-18, 2014

Country	Pending Cases 2013	Cumulative 2014	Week of Onset						% Pend.Cases
			1-13	14	15	16	17	18	
BOL	0	3	3	43
COL	37	41	22	5	6	5	3	0	8
ECU
PER	15	23	14	0	3	2	3	1	18
VEN	2	30	29	0	0	0	0	1	22
BRA	311	289	0	0	0	289	0	...	17
CRI	0	2	1	0	0	1	0	...	18
GTM	11	1	1	0	3
HND	0	0	0	0	0	0
NIC	0	17	11	0	1	2	3	0	71
PAN	0	4	2	0	0	1	0	1	4
SLV	2	221	172	17	12	5	14	1	87
CAR	3	12	7	1	0	3	0	1	9
CUB	0	0	0	0	0	0	0
DOM	0	0	0	0	0	0	0	0	0
GLP	0	0	0	0	0	0
GUF	0	0	0	0	0	0
HTI	0	6	4	0	2	0	0	...	12
MTQ	0	0	0	0	0	0
PRI
MEX	35	4	4	0	0	0	0	...	0
CAN
USA
ARG	84	19	19	0	0	37
CHL	50	12	12	0	0	0	0	...	32
PRY	6	10	10	0	0	8
URY
TOTAL	556	694	311	23	24	308	23	5	15

I: Imported; IR: Import-related; CAC: Country-acquired case
U: Unknown.

... No report received

Table 4.
Indicators of Integrated Measles/Rubella Surveillance for the Period of Weeks 01-18, 2014

Subregion and Country		Sites Reporting Weekly		% Cases with Adequate Investigation	% Cases with Adequate Sample	% Blood Samples Received in Lab. ≤5 days	% Lab. Results ≤4 days	Rate of Suspected Cases Last 52 weeks (2013/19-2014/18)	
		Total Units	% This Week					Measles/Rubella (100,000 pop.)	CRS (10,000 lb)
AND	BOL	100	100	57	29	0.8	0.5
	COL	6215	...	73	93	91	96	4.7	1.1
BRA	ECU	2184	0.0	0.0
	PER	82	90	71	43	1.5	0.0
CAP	VEN	13092	...	91	96	53	42	1.7	0.1
	BRA	12455	86	99	82	82	60	2.9	0.1
CAR	CRI	57	...	18	82	70	50	0.6	0.0
	GTM	1506	...	26	95	62	70	1.7	0.0
LAC	HND	469	...	38	100	92	100	2.0	0.3
	NIC	185	94	38	92	67	62	2.6	0.6
MEX	PAN	223	85	94	97	77	87	6.1	0.3
	SLV	893	...	24	33	60	81	7.4	3.8
NOA	CAR	759	62	6	91	5	89	4.6	0.0
	CUB	150	100	100	100	100	100	10.5	0.0
SOC	DOM	20	100	100	50	0.7	0.0
	GLP	0.4	...
URY	GUF	0.4	...
	HTI	123	...	90	100	87	54	3.0	0.2
MEX	MTQ	0.0	...
	PRI
NOA	MEX	11138	...	98	96	92	84	3.8	0.0
	CAN
SOC	USA
	ARG	779	...	15	94	57	15	0.7	0.1
URY	CHL	569	...	59	64	95	95	0.9	0.0
	PRY	988	...	54	94	94	97	4.7	0.1
TOTAL and Average*	URY	155	0.0	0.0
		51940	86	85	87	81	74	2.8	0.7

*Weighted