

Measles/Rubella Weekly Bulletin

On September 1st, Argentina launched a combined measles-rubella and polio follow-up campaign to sustain the elimination gains in the country. The campaign will target around 2.8 million children aged 1-4 years old nationwide.

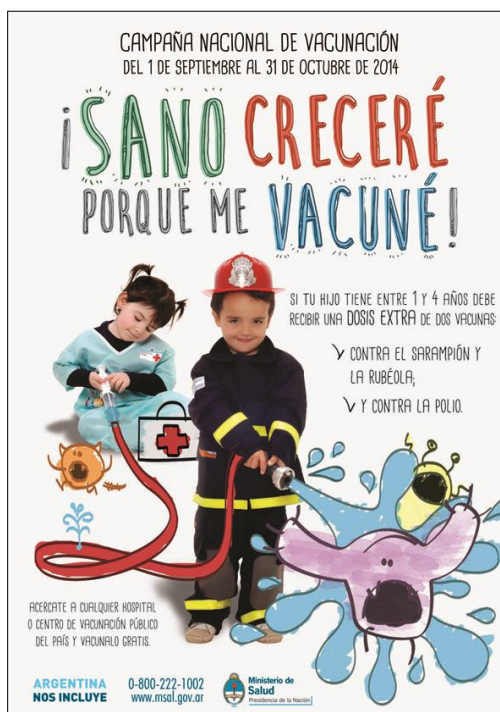


Table.1

Classification of Suspect Measles, Rubella, and Congenital Rubella Syndrome (CRS) Cases for the Period of Weeks 01-35, 2014

Subregion and Country	Susp. Cases 2014	Measles Confirmed 2014			Year/Week Last Conf. Measles case	Rubella Confirmed 2014			Year/Week Last Conf. Rubella Case	Diagnosis of Discarded Cases 2014		Congenital Rubella Syndrome			Year/Week Last Conf. CRS Case	
		Clin.	Lab.	Total		Clin.	Lab.	Total		Dengue	Others	Susp.	Conf.	CRS*		
AND	BOL	78	0	0	0	2000/40	0	0	0	2006/03	0	73	0
	COL	1397	0	0	0	2013/25	0	0	0	2012/42	0	1310	250	0	0	2005/34
	ECU	2012/28	2004/45
	PER	273	0	0	0	2008/18	0	0	0	2006/45	0	234	0	0	...	2007/16
	VEN	333	0	0	0	2012/16	0	0	0	2007/51	25	288	6
BRA	BRA	4003	38	320	358	2014/33	0	0	0	2009/41	0	3248	50	0	...	2009/34
CAP	CRI	28	0	0	0	2005/22	0	0	0	2001/42	1	23	0	0
	GTM	178	0	0	0	1998/05	0	0	0	2006/30	8	169	2	2005/00
	HND	67	0	0	0	1997/29	0	0	0	2004/11	16	50	6	0	0	2001/00
	NIC	85	0	0	0	1994/14	0	0	0	2004/19	2	80	15	0	...	2005/00
	PAN	182	0	0	0	2011/20	0	0	0	2002/48	1	178	0
	SLV	368	0	0	0	2001/19	0	0	0	2006/30	0	309	0	0	...	2001/00
CAR	CAR	263	0	0	0	2011/48	0	0	0	2008/18	0	259	0	1999/00
LAC	CUB	653	0	0	0	1993/27	0	0	0	2004/06	0	653	0	0
	DOM	39	0	0	0	2011/18	0	0	0	2006/44	0	35	0
	GLP	0	0	0	0	2011/28	0	0	0	...	0	0	2005/00
	GUF	0	0	0	0	2011/26	0	0	0	2010/06	0	0
	HTI	90	0	0	0	2001/39	0	0	0	2006/21	0	80	11	0	0	...
	MTQ	1	0	0	0	2011/27	0	0	0	...	0	1
	PRI
MEX	MEX	2805	0	2	2	2014/04	0	0	0	2012/49	0	2245	0	0	0	...
NOA	CAN	...	385 ^a	127	512 ^b	2014/34	0	1	1	2014/10	2011/12
	USA	593	593 ^b	2014/29	0	1	1	2014/16	2012/44
SOC	ARG	123	0	1	1	2014/33	0	2	2	2014/22	2	80	62	2009/27
	CHL	117	0	0	0	2011/25	0	0	0	2011/25	0	25	46	0	0	...
	PRY	238	0	0	0	1998/44	0	0	0	2005/21	0	232	4	0	0	2003/06
	URY	0	0	0	0	1999/08	0	0	0	2001/37	0	0	0
TOTAL		11321	423	1043	1466	--	0	4	4	--	55	9572	452	0	0	--

*Congenital Rubella Infection; (a) Provisional data and subject to change. Cases are epidemiologically linked and pending investigation. (b) Provisional data.

...No report received



Measles/Rubella Surveillance

Table No.2
Infection Source of Measles and Rubella Confirmed Cases for the Period of Weeks 01-35, 2014

Subregion and Country	Measles				Rubella			
	I	IR	CAC	U	I	IR	CAC	U
AND								
BOL								
COL								
ECU								
PER								
VEN								
BRA				358				
CAP								
BRA								
CRI								
GTM								
HND								
NIC								
PAN								
SLV								
CAR								
LAC								
CAR								
CUB								
DOM								
GLP								
GUF								
HTI								
MTQ								
PRI								
MEX				2				
NOA				436	1			
CAN	25	51						
USA	103	483		7	1			
SOC								
ARG	1				2			
CHL								
PRY								
URY								
TOTAL	129	534		803	4	0	0	0

Table No.3
Measles/Rubella Suspect Cases Under Investigation for the Period of Weeks 01-35, 2014

Country	Pending Cases 2013	Cumulative 2014	Week of Onset							% Pend.Cases
			1-30	31	32	33	34	35		
BOL	0	5	5	0	0	0	6	
COL	4	87	70	3	8	2	4	0	6	
ECU	
PER	15	38	27	1	3	3	4	0	14	
VEN	0	20	20	0	0	0	6	
BRA	214	414	0	0	0	0	414	0	10	
CRI	0	4	3	0	1	0	0	0	14	
GTM	0	1	1	0	0	0	0	0	1	
HND	0	1	1	0	0	0	0	0	1	
NIC	0	3	0	0	1	0	1	1	4	
PAN	0	3	3	0	0	0	0	0	2	
SLV	0	0	0	0	0	0	0	
CAR	0	4	0	0	0	1	3	0	2	
CUB	0	0	0	0	0	0	0	0	0	
DOM	0	4	4	0	0	0	0	0	10	
GLP	0	0	0	0	0	0	0	0	0	
GUF	0	0	0	0	0	0	0	0	0	
HTI	0	10	9	1	0	0	0	0	11	
MTQ	0	0	0	0	0	0	0	0	0	
PRI	
MEX	35	3	3	0	0	0	0	0	0	
CAN	
USA	
ARG	84	39	38	1	0	0	0	0	32	
CHL	0	13	13	0	0	0	0	0	11	
PRY	0	6	6	0	0	0	0	0	3	
URY	0	0	0	0	0	0	0	...	0	
TOTAL	352	655	203	6	13	6	426	1	6	

I: Imported; IR: Import-related; CAC: Country-acquired case
U: Unknown.

... No report received

Table 4.
Indicators of Integrated Measles/Rubella Surveillance for the Period of Weeks 01-35, 2014

Subregion and Country	Sites Reporting Weekly		% Cases with Adequate Investigation	% Cases with Adequate Sample	% Blood Samples Received in Lab. ≤5 days	% Lab. Results ≤4 days	Rate of Suspected Cases Last 52 weeks (2013/36-2014/35)		
	Total Units	% This Week					Measles/Rubella (100,000 pop.)	CRS (10,000 lb)	
AND	BOL	3127	...	99	97	75	88	1.4	0.0
	COL	6288	...	75	94	90	98	4.6	4.1
	ECU	2184	...	0	0	0	0
	PER	80	90	67	38	1.4	0.0
	VEN	13092	...	91	98	67	49	1.9	0.2
BRA	BRA	14828	88	0	72	72	45	2.8	0.3
CAP	CRI	57	...	50	86	75	64	0.8	0.0
	GTM	1506	100	8	94	60	83	2.1	0.1
	HND	469	89	61	100	76	98	1.9	0.6
	NIC	185	100	94	99	94	95	2.5	1.8
	PAN	223	94	96	97	84	88	6.7	0.1
	SLV	70	95	84	70	8.1	0.0
CAR	CAR	719	80	25	92	8	89	4.8	0.0
LAC	CUB	150	100	100	100	100	100	15.6	0.0
	DOM	8	97	61	68	0.7	0.0
	GLP	0.4	...
	GUF	0.4	...
	HTI	143	...	90	99	86	67	1.8	1.1
	MTQ
	PRI
MEX	MEX	11138	...	98	98	87	80	3.3	0.0
NOA	CAN
	USA
SOC	ARG	779	...	17	93	55	22	0.6	1.5
	CHL	801	99	61	86	92	96	0.7	3.5
	PRY	988	91	57	96	95	84	5.4	0.4
	URY	155	...	0	0	0	0	0.0	0.0
Total and Average*		56842	90	82	88	79	69	2.9	0.7

*Weighted