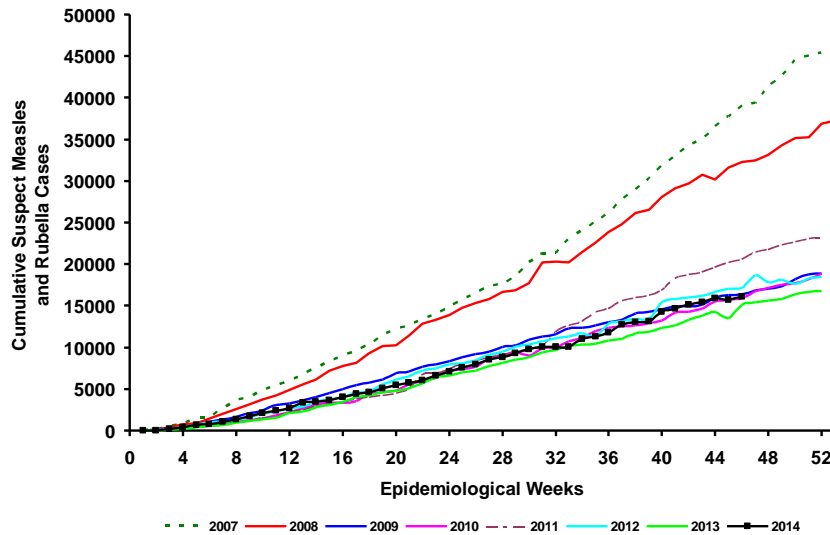


# Measles/Rubella Weekly Bulletin

Cumulative suspected measles and rubella cases by epidemiological week, the Americas, 2007-2014\*



Source: ISIS, MESS and country reports

\* Data as of week 46, 2014.

Table.1  
Classification of Suspect Measles, Rubella, and Congenital Rubella Syndrome (CRS) Cases for the Period of Weeks 01-46, 2014

Subregion and Country	Susp. Cases 2014	Measles Confirmed 2014			Year/Week Last Conf. Measles case	Rubella Confirmed 2014			Year/Week Last Conf. Rubella Case	Diagnosis of Discarded Cases 2014		Congenital Rubella Syndrome			Year/Week Last Conf. CRS Case	
		Clin.	Lab.	Total		Clin.	Lab.	Total		Dengue	Others	Susp.	Conf.	CRI*		
AND	BOL	122	0	0	0	2000/40	0	0	0	2006/03	0	117	0	...	...	...
	COL	2011	0	0	0	2013/25	0	0	0	2012/42	1	1917	357	0	0	2005/34
	ECU	...	...	...	...	2012/28	...	...	...	2004/45	...	...	...	...	...	...
	PER	365	0	0	0	2008/18	0	0	0	2006/45	0	336	0	0	...	2007/16
BRA	VEN	448	0	0	0	2012/16	0	0	0	2007/51	26	389	6	...	...	...
	BRA	5874	87	511	598	2014/46	0	0	0	2009/41	0	4782	70	0	0	2009/34
	CRI	38	0	0	0	2005/22	0	0	0	2001/42	1	33	0	0	...	...
	GTM	235	0	0	0	1998/05	0	0	0	2006/30	9	224	6	...	...	2005/00
CAP	HND	148	0	0	0	1997/29	0	0	0	2004/11	18	128	10	0	0	2001/00
	NIC	114	0	0	0	1994/14	0	0	0	2004/19	2	104	19	0	...	2005/00
	PAN	207	0	0	0	2011/20	0	0	0	2002/48	1	201	0	...	...	...
	SLV	425	0	0	0	2001/19	0	0	0	2006/30	0	383	0	0	...	2001/00
CAR	CAR	455	0	0	0	2011/48	0	0	0	2008/18	1	403	9	...	...	1999/00
	CUB	1016	0	0	0	1993/27	0	0	0	2004/06	0	1016	0	0	...	...
	DOM	54	0	0	0	2011/18	0	0	0	2006/44	0	41	0	...	...	...
	GLP	0	0	0	0	2011/28	0	0	0	...	0	0	...	...	...	2005/00
LAC	GUF	0	0	0	0	2011/26	0	0	0	2010/06	0	0	...	...	...	...
	HTI	108	0	0	0	2001/39	0	0	0	2006/21	0	107	21	0	0	...
	MTQ	1	0	0	0	2011/27	0	0	0	...	0	1	...	...	...	...
	PRI	...	...	...	...	...	...	...	...	...	...	...	...	...	...	...
MEX	MEX	4131	0	2	2	2014/04	0	0	0	2012/49	0	3327	0	0	0	...
	CAN	...	385 <sup>a</sup>	127	512 <sup>b</sup>	2014/36	0	1	1	2014/10	...	...	...	...	...	2011/12
	USA	...	...	605	605 <sup>b</sup>	2014/43	0	1	1	2014/16	...	...	...	...	...	2012/44
SOC	ARG	192	0	2	2	2014/36	0	2	2	2014/22	2	147	114	...	...	2009/27
	CHL	38	0	0	0	2011/25	0	0	0	2011/25	0	25	46	0	0	...
	PRY	310	0	0	0	1998/44	0	0	0	2005/21	1	304	4	0	0	2003/06
	URY	9	0	0	0	1999/08	0	0	0	2001/37	0	9	0	...	...	...
<b>TOTAL</b>	<b>16301</b>	<b>472</b>	<b>1247</b>	<b>1719</b>	--	<b>0</b>	<b>4</b>	<b>4</b>	--	<b>62</b>	<b>13994</b>	<b>662</b>	<b>0</b>	<b>0</b>	--	

\*Congenital Rubella Infection; (a) Provisional data and subject to change. Cases are epidemiologically linked and pending investigation. (b) Provisional data.

...No report received



# Measles/Rubella Surveillance

**Table No.2**  
Infection Source of Measles and Rubella Confirmed Cases for the Period of Weeks 01-46, 2014

Subregion and Country	Measles				Rubella			
	I	IR	CAC	U	I	IR	CAC	U
AND								
BOL								
COL								
ECU								
PER								
VEN				598				
BRA								
CAP								
CRI								
GTM								
HND								
NIC								
PAN								
SLV								
CAR								
LAC								
CAR								
CUB								
DOM								
GLP								
GUF								
HTI								
MTQ								
PRI								
MEX				2				
NOA				436	1			
CAN	25	51			1			
USA	109	489		7	1			
SOC					2			
ARG	2							
CHL								
PRY								
URY								
<b>TOTAL</b>	<b>136</b>	<b>540</b>		<b>1043</b>	<b>4</b>	<b>0</b>	<b>0</b>	<b>0</b>

**Table No.3**  
Measles/Rubella Suspect Cases Under Investigation for the Period of Weeks 01-46, 2014

Country	Pending Cases 2013	Cumulative 2014	Week of Onset						% Pend.Cases
			1-41	42	43	44	45	46	
BOL	0	5	5	...	...	...	...	...	4
COL	0	93	83	1	2	6	1	0	5
ECU	...	...	...	...	...	...	...	...	...
PER	15	29	23	2	0	0	2	2	8
VEN	0	33	33	...	...	...	...	...	7
BRA	214	494	0	0	0	0	494	0	8
CRI	0	4	2	1	1	...	...	...	11
GTM	0	2	2	0	0	0	0	0	1
HND	0	2	2	0	0	0	0	0	1
NIC	0	8	8	0	0	...	...	...	7
PAN	0	5	4	0	1	0	0	0	2
SLV	0	42	41	1	0	0	0	...	10
CAR	0	51	33	4	9	5	0	0	11
CUB	0	0	0	0	0	0	0	0	0
DOM	0	13	13	0	0	0	0	0	24
GLP	0	0	0	0	0	0	...	...	0
GUF	0	0	0	0	0	0	...	...	0
HTI	0	1	1	0	0	0	0	0	1
MTQ	0	0	0	0	0	0	...	...	0
PRI	...	...	...	...	...	...	...	...	...
MEX	0	0	0	0	0	0	0	0	0
CAN	...	...	...	...	...	...	...	...	...
USA	...	...	...	...	...	...	...	...	...
ARG	38	40	40	0	0	0	0	0	21
CHL	0	13	13	0	0	0	0	0	34
PRY	0	5	5	0	0	0	0	0	2
URY	0	0	0	0	0	0	0	...	0
<b>TOTAL</b>	<b>267</b>	<b>840</b>	<b>308</b>	<b>9</b>	<b>13</b>	<b>11</b>	<b>497</b>	<b>2</b>	<b>5</b>

I: Imported; IR: Import-related; CAC: Country-acquired case  
U: Unknown.

... No report received

**Table 4.**  
Indicators of Integrated Measles/Rubella Surveillance for the Period of Weeks 01-46, 2014

Subregion and Country	Sites Reporting Weekly		% Cases with Adequate Investigation	% Cases with Adequate Sample	% Blood Samples Received in Lab. ≤5 days	% Lab. Results ≤4 days	Rate of Suspected Cases Last 52 weeks (2013/47-2014/46)		
	Total Units	% This Week					Measles/Rubella (100,000 pop.)	CRS (10,000 lb)	
AND	BOL	3055	...	99	98	72	91	1.4	0.0
	COL	5430	90	77	96	90	97	4.5	3.2
	ECU	2184	...	...	...	...	...	...	...
	PER	7314	...	81	89	74	40	2.4	0.0
	VEN	13092	...	88	98	65	48	1.7	0.1
BRA	BRA	12241	85	...	74	74	52	2.8	0.3
CAP	CRI	57	...	55	84	73	68	0.9	0.0
	GTM	1506	100	7	94	61	79	1.8	0.1
	HND	469	87	39	97	70	94	2.0	0.5
	NIC	185	...	93	96	94	94	2.2	1.2
	PAN	223	83	96	97	84	90	5.8	0.3
	SLV	...	...	69	95	84	72	7.4	0.0
CAR	CAR	719	64	41	80	12	92	6.3	0.6
LAC	CUB	150	100	100	100	100	100	17.2	0.0
	DOM	...	...	7	96	48	57	0.6	0.0
	GLP	...	...	...	...	...	...	0.4	...
	GUF	...	...	...	...	...	...	0.4	...
	HTI	153	...	90	97	87	73	1.3	1.1
	MTQ	...	...	...	...	...	...	...	...
	PRI	...	...	...	...	...	...	...	...
MEX	MEX	11138	...	98	98	88	82	3.5	0.0
NOA	CAN	...	...	...	...	...	...	...	...
	USA	...	...	...	...	...	...	...	...
SOC	ARG	779	...	20	96	58	31	0.5	1.4
	CHL	808	99	61	86	92	96	0.4	3.5
	PRY	991	90	76	96	94	87	5.1	0.3
	URY	155	...	89	78	86	71	0.3	0.0
<b>Total and Average*</b>		<b>60649</b>	<b>88</b>	<b>84</b>	<b>88</b>	<b>80</b>	<b>72</b>	<b>2.9</b>	<b>0.7</b>

\*Weighted