

# Measles/Rubella Weekly Bulletin



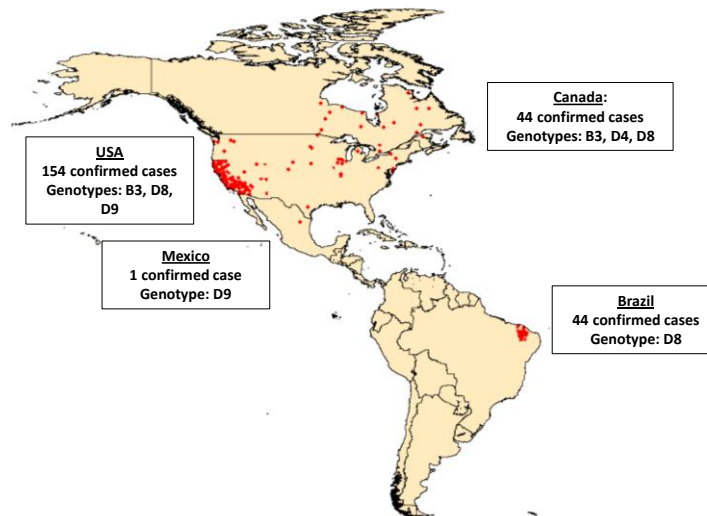
Comprehensive Family Immunization/Family, Gender and Life Course  
Measles and Rubella Surveillance in the Americas



Vol. 21, No. 7

Week ending 21 February 2015

## Measles Genotypes in the Americas, 2015\*



Source: Country reports to FGL-IM/PAHO  
\* Data as of epidemiological week 7, 2015.

Table.1  
Classification of Suspect Measles, Rubella, and Congenital Rubella Syndrome (CRS) Cases for the Period of Weeks 01-07, 2015

Subregion and Country	Susp. Cases 2015	Measles Confirmed 2015			Year/Week Last Conf. Measles case	Rubella Confirmed 2015			Year/Week Last Conf. Rubella Case	Diagnosis of Discarded Cases 2015		Congenital Rubella Syndrome			Year/Week Last Conf. CRS Case		
		Clin.	Lab.	Total		Clin.	Lab.	Total		Dengue	Others	Susp.	Conf.	CRI*			
AND	BOL	6	0	0	0	2000/40	0	0	0	2006/03	0	6	0	...	...	...	
	COL	139	0	0	0	2013/25	0	0	0	2012/42	0	120	60	0	0	2005/34	
	ECU	0	...	...	...	2012/28	...	...	...	2004/45	...	...	...	...	...	...	
	PER	26	0	0	0	2008/18	0	0	0	2006/45	0	16	0	0	0	2007/16	
BRA	VEN	0	0	0	0	2012/16	0	0	0	2007/51	0	0	0	0	0	...	
	BRA	537	2	42	44	2015/06	0	0	0	2014/40	0	323	0	...	...	2009/34	
	CRI	7	0	0	0	2005/22	0	0	0	2001/42	1	4	0	...	...	...	
	GTM	0	0	0	0	1998/05	0	0	0	2006/30	0	0	0	0	0	2005/00	
CAP	HND	108	0	0	0	1997/29	0	0	0	2004/11	0	21	1	0	0	2001/00	
	NIC	30	0	0	0	1994/14	0	0	0	2004/19	0	24	0	0	...	2005/00	
	PAN	9	0	0	0	2011/20	0	0	0	2002/48	0	9	0	0	0	...	
	SLV	2	0	0	0	2001/19	0	0	0	2006/30	0	0	0	0	0	2001/00	
CAR	CAR	26	0	0	0	2011/48	0	0	0	2008/18	0	17	0	0	0	1999/00	
	LAC	CUB	129	0	0	0	1993/27	0	0	0	2004/06	0	0	0	0	0	...
	DOM	1	0	0	0	2011/18	0	0	0	2006/44	0	1	0	...	...	...	
	GLP	0	0	0	0	2011/28	0	0	0	...	0	0	0	0	0	2005/00	
MEX	GUF	0	0	0	0	2011/26	0	0	0	2010/06	0	0	0	0	0	...	
	HTI	19	0	0	0	2001/39	0	0	0	2006/21	0	16	3	0	0	...	
	MTQ	0	0	0	0	2011/27	0	0	0	...	0	0	0	0	0	...	
	PRI	...	...	...	...	...	...	...	...	...	...	...	...	...	...	...	
NOA	MEX	438	0	1	1	2015/02	0	0	0	2012/49	0	436	0	0	0	...	
	CAN	...	...	44	44 <sup>a</sup>	2015/03	0	1	1	2015/07	...	...	...	...	...	2011/12	
SOC	USA	...	...	154	154 <sup>a</sup>	2015/06	...	...	...	2014/16	...	...	...	...	...	2012/44	
	ARG	3	0	0	0	2014/36	0	0	0	2014/22	0	3	6	0	0	2009/27	
	CHL	25	0	0	0	2011/25	0	0	0	2011/25	0	17	0	0	0	...	
	PRY	63	0	0	0	1998/44	0	0	0	2005/21	0	43	0	0	0	2003/06	
URY	...	...	...	...	1999/08	...	...	...	2001/37	...	...	...	...	...	...		
<b>TOTAL</b>	<b>1568</b>	<b>2</b>	<b>241</b>	<b>243</b>	<b>--</b>	<b>0</b>	<b>1</b>	<b>1</b>	<b>--</b>	<b>1</b>	<b>1056</b>	<b>70</b>	<b>0</b>	<b>0</b>	<b>--</b>		

\*Congenital Rubella Infection; (a) Provisional data.

...No report received



# Measles/Rubella Surveillance

**Table No.2**  
Infection Source of Measles and Rubella Confirmed Cases for the Period of Weeks 01-07, 2015

Subregion and Country	Measles				Rubella			
	I	IR	CAC	U	I	IR	CAC	U
AND								
BOL								
COL								
ECU								
PER								
VEN				44				
BRA								
CAP								
CRI								
GTM								
HND								
NIC								
PAN								
SLV								
CAR								
LAC								
CUB								
DOM								
GLP								
GUF								
HTI								
MTQ								
PRI								
MEX	1							
NOA	2	23		19	1			
CAN	53	92		9				
USA								
SOC								
ARG								
CHL								
PRY								
URY								
<b>TOTAL</b>	<b>56</b>	<b>115</b>	<b>0</b>	<b>72</b>	<b>0</b>	<b>1</b>	<b>0</b>	<b>0</b>

**Table No.3**  
Measles/Rubella Suspect Cases Under Investigation for the Period of Weeks 01-07, 2015

Country	Pending Cases 2014	Cumulative 2015	Week of Onset							% Pend.Cases
			1-2	3	4	5	6	7		
BOL	0	0	0	0	0	0	0	0	0	0
COL	77	19	10	3	5	1	0	0	0	14
ECU	...	...	...	...	...	...	...	...	...	...
PER	18	10	1	3	2	1	3	...	...	38
VEN	0	0	0	0	0	0	0	0	0	0
BRA	431	170	0	0	0	0	170	0	0	32
CRI	0	2	0	0	0	0	2	0	0	29
GTM	2	0	0	0	0	0	0	0	0	0
HND	94	87	66	13	4	1	2	1	1	81
NIC	0	6	0	2	0	1	2	1	1	20
PAN	5	0	0	0	0	0	0	0	0	0
SLV	0	0	0	0	...	...	...	...	...	0
CAR	0	9	1	1	1	3	2	1	1	35
CUB	0	129	1	0	0	3	17	108	...	100
DOM	13	0	0	0	0	0	...	...	...	0
GLP	0	0	0	0	0	0	0	0	0	0
GUF	0	0	0	0	0	0	0	0	0	0
HTI	0	3	0	0	0	1	0	2	1	16
MTQ	0	0	0	0	0	0	0	0	0	0
PRI	...	...	...	...	...	...	...	...	...	...
MEX	0	1	1	0	0	0	0	0	0	0
CAN	...	...	...	...	...	...	...	...	...	...
USA	...	...	...	...	...	...	...	...	...	...
ARG	2	0	0	0	0	0	0	0	0	0
CHL	13	8	2	0	1	1	2	2	2	32
PRY	2	20	4	1	3	6	4	2	2	32
URY	...	...	...	...	...	...	...	...	...	...
<b>TOTAL</b>	<b>657</b>	<b>464</b>	<b>86</b>	<b>23</b>	<b>16</b>	<b>18</b>	<b>204</b>	<b>117</b>	<b>30</b>	

I: Imported; IR: Import-related; CAC: Country-acquired case  
U: Unknown.

... No report received

**Table 4.**  
Indicators of Integrated Measles/Rubella Surveillance for the Period of Weeks 01-07, 2015

Subregion and Country	Sites Reporting Weekly		% Cases with Adequate Investigation	% Cases with Adequate Sample	% Blood Samples Received in Lab. ≤5 days	% Lab. Results ≤4 days	Rate of Suspected Cases Last 52 weeks (2014/09-2015/07)	
	Total Units	% This Week					Measles/Rubella (100,000 pop.)	CRS (10,000 lb)
AND	BOL	3051	84	100	100	83	1.5	0.0
	COL	5510	92	73	90	98	5.1	4.4
	ECU	2184	...	...	...	...	...	...
	PER	7314	0	100	88	30	1.3	0.0
	VEN	13092	0	...	...	...	1.8	0.1
BRA	BRA	13718	75	...	69	63	2.8	0.3
CAP	CRI	57	0	86	100	86	0.8	0.0
	GTM	1506	95	...	...	...	1.7	0.1
	HND	469	91	20	100	29	3.2	0.6
	NIC	185	...	90	100	89	2.5	1.6
	PAN	223	87	89	100	89	6.1	0.3
	SLV	...	...	100	...	...	6.9	0.0
CAR	CAR	733	71	65	85	23	6.4	1.1
LAC	CUB	150	100	100	100	100	17.2	0.0
	DOM	...	...	...	100	...	0.5	0.0
	GLP	...	...	...	...	...	0.4	...
	GUF	...	...	...	...	...	0.4	...
	HTI	185	94	100	95	63	1.1	0.8
	MTQ	...	...	...	...	...	...	...
	PRI	...	...	...	...	...	...	...
MEX	MEX	11138	...	99	98	87	3.5	0.0
NOA	CAN	...	...	...	...	...	...	...
	USA	...	...	...	...	...	...	...
SOC	ARG	779	...	...	100	67	0.6	1.7
	CHL	812	98	48	88	78	0.2	1.9
	PRY	999	90	51	68	100	5.1	0.3
	URY	155	...	...	...	...	0.3	0.0
<b>Total and Average*</b>		<b>62260</b>	<b>82</b>	<b>82</b>	<b>86</b>	<b>81</b>	<b>2.8</b>	<b>0.6</b>

\*Weighted