

# Measles/Rubella Weekly Bulletin



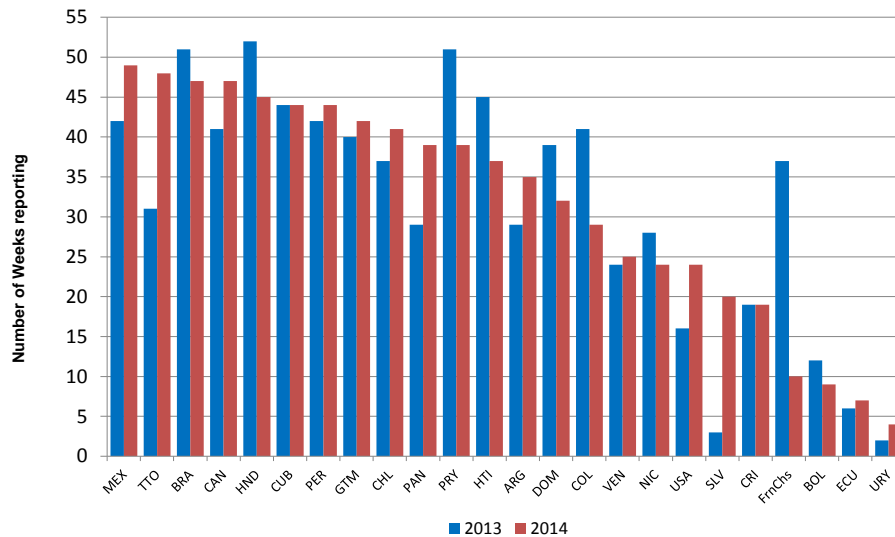
Comprehensive Family Immunization/Family, Gender and Life Course  
Measles and Rubella Surveillance in the Americas



Vol. 21, No. 14

Week ending 11 April 2015

## Countries reporting measles and rubella data weekly to PAHO. The Americas, 2013-2014



Source: Country reports through ISIS, MESS, DEF and Excel files to FGL-IM/PAHO.  
NOTE: TTO represents Non-Latin Caribbean countries.

Table.1  
Classification of Suspect Measles, Rubella, and Congenital Rubella Syndrome (CRS) Cases for the Period of Weeks 01-14, 2015

Subregion and Country	Susp. Cases 2015	Measles Confirmed 2015			Year/Week Last Conf. Measles case	Rubella Confirmed 2015			Year/Week Last Conf. Rubella Case	Diagnosis of Discarded Cases 2015		Congenital Rubella Syndrome			Year/Week Last Conf. CRS Case	
		Clin.	Lab.	Total		Clin.	Lab.	Total		Dengue	Others	Susp.	Conf.	CRI*		
AND	BOL	23	0	0	0	2000/40	0	0	0	2006/03	0	21	0	...	...	...
	COL	367	0	0	0	2013/25	0	0	0	2012/42	0	315	122	0	0	2005/34
	ECU	...	...	...	...	2012/28	...	...	...	2004/45	0	0	0	...	...	...
	PER	68	0	0	0	2008/18	0	0	0	2006/45	0	50	0	0	0	2007/16
	VEN	75	0	0	0	2012/16	0	0	0	2007/51	2	73	1	0	0	...
BRA	BRA	1582	10	81	91	2015/12	0	0	0	2014/40	0	1086	7	0	...	2009/34
CAP	CRI	7	0	0	0	2005/22	0	0	0	2001/42	1	4	0	...	...	...
	GTM	15	0	0	0	1998/05	0	0	0	2006/30	1	13	0	0	0	2005/00
	HND	149	0	0	0	1997/29	0	0	0	2004/11	0	148	3	0	0	2001/00
	NIC	68	0	0	0	1994/14	0	0	0	2004/19	0	65	0	0	...	2005/00
	PAN	22	0	0	0	2011/20	0	0	0	2002/48	0	19	0	0	0	...
	SLV	38	0	0	0	2001/19	0	0	0	2006/30	0	31	0	0	0	2001/00
CAR	CAR	93	0	0	0	2011/48	0	0	0	2008/18	1	85	7	0	0	1999/00
LAC	CUB	246	0	0	0	1993/27	0	0	0	2004/06	0	0	0	0	0	...
	DOM	1	0	0	0	2011/18	0	0	0	2006/44	0	1	0	...	...	...
	GLP	1	0	0	0	2011/28	0	0	0	...	...	...	...	...	...	2005/00
	GUF	1	0	0	0	2011/26	0	0	0	2010/06	...	...	...	...	...	...
	HTI	40	0	0	0	2001/39	0	0	0	2006/21	0	34	3	0	0	...
	MTQ	0	0	0	0	2011/27	0	0	0	...	...	...	...	...	...	...
	PRI	...	...	...	...	...	...	...	...	...	...	...	...	...	...	...
MEX	MEX	1073	0	1	1	2015/02	0	0	0	2012/49	0	833	0	0	0	...
NOA	CAN	...	...	191	191 <sup>a</sup>	2015/14	0	0	0	2014/10	0	0	0	...	...	2011/12
	USA	...	...	178	178 <sup>a</sup>	2015/11	...	...	...	2014/16	...	...	...	...	...	2012/44
SOC	ARG	18	0	0	0	2014/36	0	0	0	2014/22	0	18	6	0	0	2009/27
	CHL	52	0	0	0	2011/25	0	0	0	2011/25	0	45	0	0	0	...
	PRY	160	0	0	0	1998/44	0	0	0	2005/21	0	103	0	0	0	2003/06
	URY	1	0	0	0	1999/08	0	0	0	2001/37	0	1	0	0	0	...
<b>TOTAL</b>		<b>4100</b>	<b>10</b>	<b>451</b>	<b>461</b>	--	<b>0</b>	<b>0</b>	<b>0</b>	--	<b>5</b>	<b>2945</b>	<b>149</b>	<b>0</b>	<b>0</b>	--

\*Congenital Rubella Infection; (a) Provisional data.

...No report received



# Measles/Rubella Surveillance

**Table No.2**  
Infection Source of Measles and Rubella Confirmed Cases for the Period of Weeks 01-14, 2015

Subregion and Country	Measles				Rubella			
	I	IR	CAC	U	I	IR	CAC	U
AND								
BOL								
COL								
ECU								
PER								
VEN				91				
BRA								
CAP								
CRI								
GTM								
HND								
NIC								
PAN								
SLV								
CAR								
LAC								
CUB								
DOM								
GLP								
GLP								
GUF								
GUF								
HTI								
HTI								
MTQ								
MTQ								
PRI								
PRI								
MEX	1							
NOA	5	165		21				
NOA	71	105		2				
SOC								
ARG								
CHL								
PRY								
URY								
<b>TOTAL</b>	<b>77</b>	<b>270</b>	<b>0</b>	<b>114</b>	<b>0</b>	<b>0</b>	<b>0</b>	<b>0</b>

**Table No.3**  
Measles/Rubella Suspect Cases Under Investigation for the Period of Weeks 01-14, 2015

Country	Pending Cases 2014	Cumulative 2015	Week of Onset							% Pend.Cases
			1-9	10	11	12	13	14		
BOL	0	2	2	0	0	0	0	...	9	
COL	45	52	35	6	9	2	0	...	14	
ECU	...	...	...	...	...	...	...	...	...	
PER	18	18	7	5	2	4	0	...	26	
VEN	0	0	0	0	0	0	0	...	0	
BRA	431	405	0	0	0	0	405	0	26	
CRI	0	2	2	0	...	...	...	...	29	
GTM	2	1	0	0	0	0	1	0	7	
HND	0	1	1	0	0	0	0	0	1	
NIC	0	3	0	1	0	2	0	0	4	
PAN	5	3	0	0	0	0	1	2	14	
SLV	2	7	5	0	1	1	0	0	18	
CAR	1	7	3	2	1	1	0	0	8	
LAC	0	246	147	25	0	33	0	41	100	
CUB	0	0	0	0	...	...	...	...	0	
DOM	0	0	0	0	0	0	0	...	0	
GLP	0	0	0	0	0	0	0	...	0	
GLP	0	0	0	0	0	0	0	...	0	
GUF	0	0	0	0	0	0	0	...	0	
GUF	0	6	3	2	1	0	0	...	15	
HTI	0	0	0	0	0	0	0	...	0	
MTQ	0	0	0	0	0	0	0	...	0	
PRI	...	...	...	...	...	...	...	...	...	
PRI	0	8	6	2	0	0	0	0	1	
MEX	...	...	...	...	...	...	...	...	...	
NOA	...	...	...	...	...	...	...	...	...	
NOA	...	...	...	...	...	...	...	...	...	
SOC	33	0	0	0	0	0	0	...	0	
ARG	0	7	1	0	2	1	2	1	13	
CHL	0	57	32	8	8	1	6	2	36	
PRY	0	0	0	0	0	0	0	...	0	
URY	0	0	0	0	0	0	0	...	0	
<b>TOTAL</b>	<b>539</b>	<b>825</b>	<b>244</b>	<b>51</b>	<b>24</b>	<b>45</b>	<b>415</b>	<b>46</b>	<b>20</b>	

I: Imported; IR: Import-related; CAC: Country-acquired case  
U: Unknown.

... No report received

**Table 4**  
Indicators of Integrated Measles/Rubella Surveillance for the Period of Weeks 01-14, 2015

Subregion and Country	Sites Reporting Weekly		% Cases with Adequate Investigation	% Cases with Adequate Sample	% Blood Samples Received in Lab. ≤5 days	% Lab. Results ≤4 days	Rate of Suspected Cases Last 52 weeks (2014/16-2015/14)		
	Total Units	% This Week					Measles/Rubella (100,000 pop.)	CRS (10,000 lb)	
AND	BOL	3195	...	100	100	91	77	1.3	0.0
	COL	5504	...	77	90	94	96	5.5	0.9
	ECU	2184	...	...	...	...	...	0.0	...
	PER	7314	...	84	88	64	46	1.3	0.0
	VEN	13092	...	95	100	78	53	2.0	0.1
BRA	BRA	13819	99	...	71	71	56	3.1	0.3
CAP	CRI	57	...	86	100	86	86	0.9	0.0
	GTM	1506	89	7	87	57	86	1.4	0.1
	HND	469	68	23	100	73	34	5.5	0.6
	NIC	185	100	96	99	86	91	2.5	1.6
	PAN	223	78	50	100	90	100	4.1	0.3
	SLV	...	...	74	92	94	91	4.7	0.0
CAR	CAR	714	90	45	88	22	62	6.2	3.8
LAC	CUB	150	100	100	100	100	100	10.3	0.0
	DOM	247	...	...	100	...	...	0.1	0.0
	GLP	...	...	...	...	...	...	0.2	...
	GLP	...	...	...	...	...	...	0.4	...
	GUF	...	...	...	...	...	...	0.4	...
	HTI	191	97	98	95	76	79	1.1	0.1
	MTQ	...	...	...	...	...	...	0.2	...
	PRI	...	...	...	...	...	...	0.0	...
MEX	MEX	...	...	98	96	90	89	4.2	0.0
NOA	CAN	...	...	...	...	...	...	...	...
NOA	USA	...	...	...	...	...	...	...	...
SOC	ARG	779	...	22	100	83	61	0.8	1.7
	CHL	806	87	38	92	86	90	1.6	1.9
	PRY	999	89	48	67	92	89	5.5	0.3
	URY	155	...	100	100	100	100	0.3	0.0
<b>Total and Average*</b>		<b>51589</b>	<b>96</b>	<b>82</b>	<b>85</b>	<b>81</b>	<b>73</b>	<b>3.1</b>	<b>0.7</b>

\*Weighted