

Measles/Rubella Weekly Bulletin



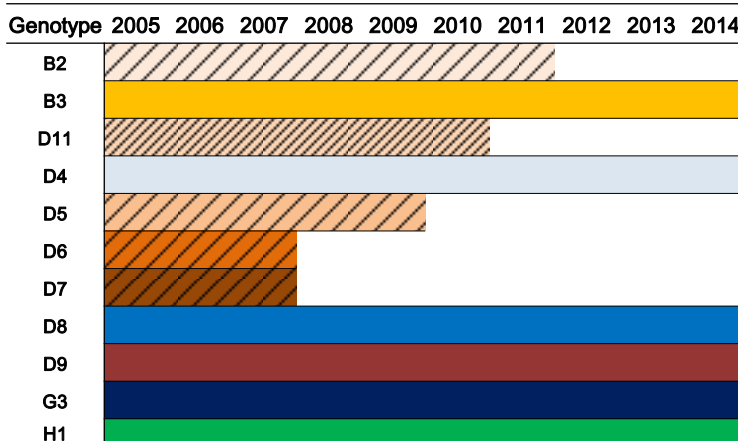
Comprehensive Family Immunization/Family, Gender and Life Course
Measles and Rubella Surveillance in the Americas



Vol. 21, No. 39

Week ending 3 October 2015

Genotypes of measles detected globally in the last 10 years



Source: Dr. Paul Rota, CDC and Global Measles-Rubella Laboratory Network
Solid color: Genotypes with ongoing transmission; stippled: genotypes with no detections in the last 3 years

Table.1
Classification of Suspect Measles, Rubella, and Congenital Rubella Syndrome (CRS) Cases for the Period of Weeks 01-39, 2015

Subregion and Country	Susp. Cases 2015	Measles Confirmed 2015			Year/Week Last Conf. Measles case	Rubella Confirmed 2015			Year/Week Last Conf. Rubella Case	Diagnosis of Discarded Cases 2015		Congenital Rubella Syndrome			Year/Week Last Conf. CRS Case		
		Clin.	Lab.	Total		Clin.	Lab.	Total		Dengue	Others	Susp.	Conf.	CRI*			
AND	BOL	54	0	0	0	2000/40	0	0	0	2006/03	0	51	0	
	COL	1252	0	1	1	2015/36	0	0	0	2012/42	0	1197	362	0	0	2005/34	
	ECU	2012/28	2004/45	
	PER	481	0	4	4	2015/25	0	0	0	2006/45	0	417	0	0	0	2007/16	
BRA	VEN	379	0	0	0	2012/16	0	0	0	2007/51	8	368	2	0	0	...	
	BRA	4491	0	169	169	2015/27	0	0	0	2014/40	0	4020	1	0	...	2009/34	
	CRI	37	0	0	0	2005/22	0	0	0	2001/42	2	33	0	
	GTM	130	0	0	0	1998/05	0	0	0	2006/30	5	124	24	0	0	2005/00	
CAP	HND	186	0	0	0	1997/29	0	0	0	2004/11	0	185	9	0	0	2001/00	
	NIC	131	0	0	0	1994/14	0	0	0	2004/19	0	127	32	0	...	2005/00	
	PAN	56	0	0	0	2011/20	0	0	0	2002/48	0	56	1	0	0	...	
	SLV	161	0	0	0	2001/19	0	0	0	2006/30	0	149	0	0	0	2001/00	
CAR	CAR	208	0	0	0	2011/48	0	0	0	2008/18	1	201	7	0	0	1999/00	
	LAC	CUB	1131	0	0	0	1993/27	0	0	0	2004/06	0	1131	0	0	0	...
	DOM	36	0	0	0	2011/18	0	0	0	2006/44	0	35	0	
	GLP	1	0	0	0	2011/28	0	0	0	...	0	1	0	2005/00	
MEX	GUF	2	0	0	0	2011/26	0	0	0	2010/06	0	2	0	
	HTI	142	0	0	0	2001/39	0	0	0	2006/21	0	126	25	0	0	...	
	MTQ	0	0	0	0	2011/27	0	0	0	...	0	0	0	
	MEX	3817	0	1	1	2015/02	0	0	0	2012/49	0	3015	0	0	0	...	
NOA	CAN	195	195 ^a	2015/19	0	0	0	2014/10	2011/12	
	USA	189	189 ^a	2015/31	2014/16	2012/44	
SOC	ARG	294	0	0	0	2014/36	0	0	0	2014/22	2	200	76	0	0	2009/27	
	CHL	541	0	9	9	2015/27	0	0	0	2011/25	0	503	0	0	0	...	
	PRY	431	0	0	0	1998/44	0	0	0	2005/21	11	357	0	0	0	2003/06	
	URY	5	0	0	0	1999/08	0	0	0	2001/37	0	5	0	0	0	...	
TOTAL	13966	0	568	568	--	0	0	0	--	29	12303	539	0	0	0	--	

*Congenital Rubella Infection; (a) Provisional data.

...No report received



Measles/Rubella Surveillance

Table No.2
Infection Source of Measles and Rubella Confirmed Cases for the Period of Weeks 01-39, 2015

Subregion and Country		Measles				Rubella			
		I	IR	CAC	U	I	IR	CAC	U
AND	BOL	1							
	COL								
BRA	ECU								
	PER	1	3						
	VEN								
	BRA				169				
	CAP								
CAR LAC	CRI								
	GTM								
	HND								
	NIC								
	PAN								
	SLV								
	CAR								
	LAC								
	CUB								
	DOM								
MEX	GLP								
	GUF								
NOA	HTI								
	MTQ								
SOC	MEX	1							
	CAN	7	168		20				
SOC	USA	91	87		11				
	ARG								
	CHL	2	7						
	PRY								
	URY								
TOTAL		103	265	0	200	0	0	0	0

Table No.3
Measles/Rubella Suspect Cases Under Investigation for the Period of Weeks 01-39, 2015

Country	Pending Cases 2014	Cumulative 2015	Week of Onset							% Pend.Cases	
			1-34	35	36	37	38	39			
BOL	0	3	2	1	6		
COL	1	54	46	2	4	2	0	...	4		
ECU		
PER	0	60	40	3	2	6	4	5	12		
VEN	0	3	3	0	0	0	0	0	1		
BRA	431	232	178	16	12	17	9	0	5		
CAP	0	2	1	1	0	0	0	0	5		
CRI	0	1	1	0	0	0	0	0	1		
GTM	0	1	0	0	0	0	1	0	1		
HND	0	1	0	0	0	0	0	0	1		
NIC	0	4	2	0	2	0	3		
PAN	0	0	0	0	0	0	0	0	0		
SLV	2	12	12	0	0	0	0	...	7		
CAR	0	6	0	0	1	2	1	2	3		
LAC	0	0	0	0	0	0	0	...	0		
CUB	0	1	1	0	0	0	0	0	3		
DOM	13	1	0	0	0	0	0	0	0		
GLP	0	0	0	0	0	0	0	0	0		
GUF	0	0	0	0	0	0	0	0	0		
HTI	0	16	14	0	0	1	1	0	11		
MTQ	0	0	0	0	0	0	0	0	0		
MEX	0	14	4	0	5	0	0	5	0		
CAN		
USA		
ARG	0	92	74	4	3	6	5	0	31		
CHL	0	29	21	1	1	3	0	3	5		
PRY	0	63	54	1	2	3	1	2	15		
URY	0	0	0	0	0	0	0	...	0		
TOTAL			447	593	453	29	32	40	22	17	4

I: Imported; IR: Import-related; CAC: Country-acquired case
U: Unknown.

... No report received

Table 4
Indicators of Integrated Measles/Rubella Surveillance for the Period of Weeks 01-39, 2015

Subregion and Country		Sites Reporting Weekly		% Cases with Adequate Investigation	% Cases with Adequate Sample	% Blood Samples Received in Lab. ≤5 days	% Lab. Results ≤4 days	Rate of Suspected Cases Last 52 weeks (2014/41-2015/39)		
		Total Units	% This Week					Measles/Rubella (100,000 pop.)	CRS (10,000 lb)	
AND	BOL	3279	...	100	100	86	78	0.9	0.0	
	COL	5547	...	79	95	89	97	4.2	4.0	
	ECU	2184	
	PER	7314	...	87	94	71	52	2.0	0.0	
	VEN	13092	...	93	99	72	63	1.5	0.0	
CAP	BRA	12048	79	...	73	73	42	2.3	0.2	
	CRI	57	...	54	97	81	73	1.0	0.0	
	GTM	1506	81	1	97	61	77	1.1	0.5	
	HND	469	91	31	100	71	44	4.8	0.5	
	NIC	185	...	95	100	90	93	3.1	2.3	
	PAN	224	85	34	100	72	96	2.3	0.1	
	SLV	66	93	86	94	3.1	3.8	
	CAR	CAR	714	96	42	93	16	72	4.0	1.4
	LAC	CUB	100	100	100	100	12.7	0.0
	DOM	247	50	...	92	44	44	0.4	0.0	
MEX	GLP	0.2	0.0	
	GUF	0.9	0.0	
	HTI	191	94	92	96	81	80	1.6	1.0	
	MTQ	0.0	0.0	
	MEX	93	93	89	81	8.0	0.0	
NOA	CAN	
	USA	
SOC	ARG	784	...	23	92	73	43	1.1	1.1	
	CHL	817	91	40	92	95	95	3.6	0.0	
	PRY	1024	87	65	80	91	89	7.9	0.3	
	URY	155	...	80	100	100	60	0.2	0.0	
Total and Average*		49837	80	81	87	82	69	3.7	0.9	

*Weighted