

Measles/Rubella Weekly Bulletin



Measles Genotype Distribution, The Americas, 2013-2015*

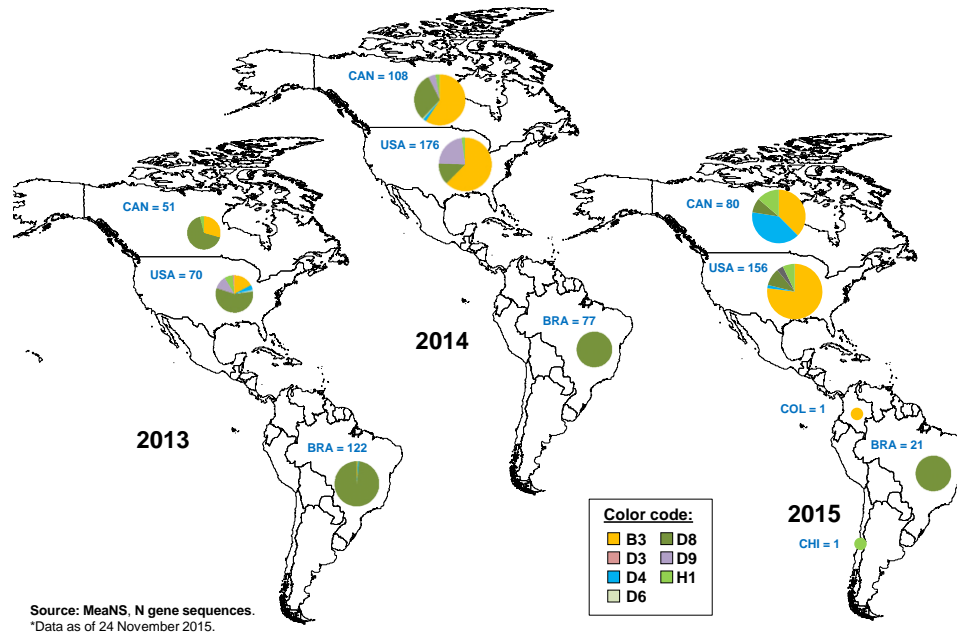


Table.1
 Classification of Suspect Measles, Rubella, and Congenital Rubella Syndrome (CRS) Cases for the Period of Weeks 01-48, 2015

Subregion and Country	Susp. Cases 2015	Measles Confirmed 2015			Year/Week Last Conf. Measles case	Rubella Confirmed 2015			Year/Week Last Conf. Rubella Case	Diagnosis of Discarded Cases 2015		Congenital Rubella Syndrome			Year/Week Last Conf. CRS Case	
		Clin.	Lab.	Total		Clin.	Lab.	Total		Dengue	Others	Susp.	Conf.	CR1*		
AND	BOL	83	0	0	0	2000/40	0	0	0	2006/03	0	79	0
	COL	1858	0	1	1	2015/36	0	0	0	2012/42	0	1768	483	0	0	2005/34
	ECU	285	0	0	0	2012/28	0	0	0	2004/45	1	242	0
	PER	545	0	4	4	2015/25	0	0	0	2006/45	0	460	0	0	0	2007/16
	VEN	562	0	0	0	2012/16	0	0	0	2007/51	17	545	3	0	0	...
BRA	BRA	5419	33	181	214	2015/32	0	0	0	2014/40	0	4959	1	0	...	2009/34
CAP	CRI	44	0	0	0	2005/22	0	0	0	2001/42	2	40	0
	GTM	163	0	0	0	1998/05	0	0	0	2006/30	5	157	24	0	0	2005/00
	HND	191	0	0	0	1997/29	0	0	0	2004/11	1	189	11	0	0	2001/00
	NIC	150	0	0	0	1994/14	0	0	0	2004/19	0	149	45	0	...	2005/00
	PAN	68	0	0	0	2011/20	0	0	0	2002/48	0	65	1	0	0	...
	SLV	401	0	0	0	2001/19	0	0	0	2006/30	0	385	0	0	0	2001/00
CAR	CAR	266	0	0	0	2011/48	0	0	0	2008/18	1	263	7	0	0	1999/00
LAC	CUB	1240	0	0	0	1993/27	0	0	0	2004/06	0	1240	0	0	0	...
	DOM	39	0	0	0	2011/18	0	0	0	2006/44	0	38	0
	GLP	1	0	0	0	2011/28	0	0	0	...	0	1	0	2005/00
	GUF	2	0	0	0	2011/26	0	0	0	2010/06	0	2	0
	HTI	159	0	0	0	2001/39	0	0	0	2006/21	0	136	32	0	0	...
	MTQ	0	0	0	0	2011/27	0	0	0	...	0	0	0
MEX	MEX	4379	0	1	1	2015/02	0	0	0	2012/49	0	3482	0	0	0	...
NOA	CAN	196	196 ^a	2015/42	0	0	0	2014/10	0	0	0	2011/12
	USA	189	189 ^a	2015/31	2014/16	0	0	0	2012/44
SOC	ARG	375	0	0	0	2014/36	0	0	0	2014/22	2	264	105	0	0	2009/27
	CHL	671	0	9	9	2015/27	0	0	0	2011/25	0	629	124	0	0	...
	PRY	523	0	0	0	1998/44	0	0	0	2005/21	14	486	0	0	0	2003/06
	URY	8	0	0	0	1999/08	0	0	0	2001/37	0	8	0	0	0	...
TOTAL		17432	33	581	614	--	0	0	0	--	43	15587	836	0	0	--

*Congenital Rubella Infection; (a) Provisional data.

...No report received



Measles/Rubella Surveillance

Table No.2
Infection Source of Measles and Rubella Confirmed Cases for the Period of Weeks 01-48, 2015

Subregion and Country		Measles				Rubella			
		I	IR	CAC	U	I	IR	CAC	U
AND	BOL	1							
	COL								
BRA	ECU								
	PER	1	3						
	VEN								
	BRA				214				
	CAP								
CAR LAC	CRI								
	GTM								
	HND								
	NIC								
	PAN								
	SLV								
	CAR								
	LAC								
	CUB								
	DOM								
MEX	GLP								
	GUF								
NOA	HTI								
	MTQ								
SOC	MEX	1							
	CAN	8	168		20				
SOC	USA	91	87		11				
	ARG								
	CHL	2	7						
	PRY								
	URY								
TOTAL		104	265	0	245	0	0	0	0

Table No.3
Measles/Rubella Suspect Cases Under Investigation for the Period of Weeks 01-48, 2015

Country	Pending Cases 2014	Cumulative 2015	Week of Onset						% Pend.Cases
			1-43	44	45	46	47	48	
BOL	0	4	2	0	0	0	2	0	5
COL	7	89	56	3	5	6	13	6	5
ECU	0	42	32	8	2	0	0	...	15
PER	0	80	78	2	0	0	15
VEN	0	0	0	0	0	0	0	0	0
BRA	431	247	174	18	20	21	14	0	5
CRI	0	2	2	0	0	0	0	0	5
GTM	0	1	1	0	0	0	0	0	1
HND	0	1	0	0	0	1	0	0	1
NIC	0	1	0	0	1	0	0	...	1
PAN	0	3	0	0	0	2	1	0	4
SLV	2	12	7	1	1	0	3	0	3
CAR	0	2	1	0	0	0	1	0	1
LAC	0	0	0	0	0	0	0	0	0
CUB	0	0	0	0	0	0	0	0	0
DOM	13	1	1	0	0	3
GLP	0	0	0	0	0	0
GUF	0	0	0	0	0	0
HTI	0	23	21	0	0	0	1	1	14
MTQ	0	0	0	0	0	0
MEX	0	13	3	0	1	3	1	5	0
CAN
USA
ARG	0	109	90	5	9	4	1	0	29
CHL	0	33	24	1	2	4	1	1	5
PRY	0	23	23	0	0	0	0	0	4
URY	0	0	0	0	0	0	0	...	0
TOTAL	453	686	515	38	41	41	38	13	4

I: Imported; IR: Import-related; CAC: Country-acquired case
U: Unknown.

... No report received

Table 4
Indicators of Integrated Measles/Rubella Surveillance for the Period of Weeks 01-48, 2015

Subregion and Country		Sites Reporting Weekly		% Cases with Adequate Investigation	% Cases with Adequate Sample	% Blood Samples Received in Lab. ≤5 days	% Lab. Results ≤4 days	Rate of Suspected Cases Last 52 weeks (2014/50-2015/48)		
		Total Units	% This Week					Measles/Rubella (100,000 pop.)	CRS (10,000 lb)	
AND	BOL	3459	82	100	100	79	82	0.9	0.0	
	COL	5540	83	79	95	90	98	4.4	5.4	
	ECU	2184	...	55	96	92	55	2.1	0.0	
	PER	7314	...	86	94	71	49	2.0	0.0	
	VEN	13092	...	93	99	74	62	2.0	0.1	
CAP	BRA	13547	81	0	58	58	48	2.8	0.3	
	CRI	57	...	55	86	77	72	1.0	0.0	
	GTM	1506	92	1	95	58	77	1.2	0.5	
	HND	469	89	32	99	70	46	3.7	0.6	
	NIC	185	...	94	100	90	92	2.7	3.3	
	PAN	224	87	32	100	74	95	2.1	0.1	
	SLV	31	49	87	93	6.6	3.8	
	CAR	CAR	714	74	97	93	15	70	3.8	1.4
	LAC	CUB	168	100	100	100	100	100	12.3	0.0
		DOM	247	...	3	92	46	46	0.4	0.0
	GLP	
	GUF	
	HTI	191	96	92	95	78	76	1.6	1.2	
	MTQ	
MEX	MEX	91	96	90	81	8.5	0.0	
	NOA	CAN	
SOC	USA	
	ARG	784	...	22	86	70	43	1.0	1.5	
	CHL	817	89	38	91	95	95	4.1	5.1	
	PRY	1033	85	67	84	91	91	8.5	0.3	
	URY	155	...	88	100	100	50	0.3	0.0	
Total and Average*		51686	83	79	82	77	72	3.8	0.6	

*Weighted