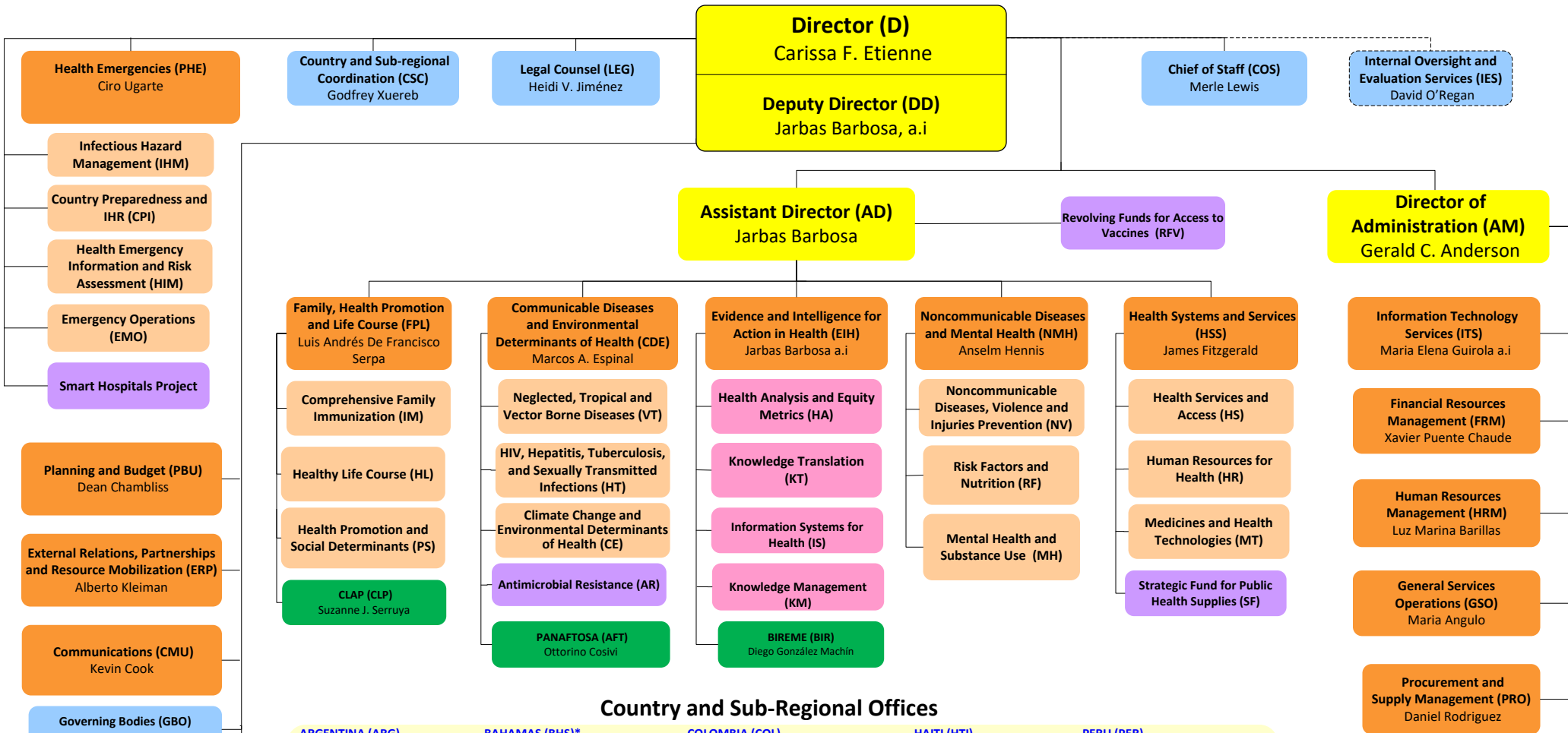


Organizational Chart of the Pan American Sanitary Bureau



Country and Sub-Regional Offices

ARGENTINA (ARG) Maureen Birmingham	BAHAMAS (BHS)* Esther de Gourville	COLOMBIA (COL) Gina Tambini Gómez	HAITI (HTI) Luis Felipe Codina	PERU (PER) Ruben Mayorga Sagastume, a.i
BARBADOS (BRB) & EASTERN CARIBBEAN COUNTRIES (ECC)* Yitades Gebre	*Also serves: • Turks & Caicos Islands	COSTA RICA (CRI) María Dolores Perez-Rosales	HONDURAS (HND) Piedad Huerta Arneros	SOUTH AMERICAN SUB-REGION (SAM)* Rubén Mayorga Sagastume
Also serves: • Anguilla • Antigua and Barbuda • British Virgin Islands • Dominica • French Guiana • French St. Martin • Grenada • Guadeloupe • Martinique • Montserrat • St. Kitts and Nevis • St. Lucia • St. Vincent and the Grenadines	BELIZE (BLZ) Noreen Jack	CUBA (CUB) Jose Moya	JAMAICA (JAM) Bernadette Theodore-Gandi	*Based in Peru SURINAME (SUR) Karen Lewis-Bell
	BOLIVIA (BOL) Alfonso Tenorio Gnecco a.i	DOMINICAN REPUBLIC (DOM) Alma Morales	*Also serves: • Bermuda • Cayman Islands	TRINIDAD & TOBAGO (TTO)* Erica Wheeler
	BRAZIL (BRA) Socorro Gross-Galiano	ECUADOR (ECU) Gina Watson	MEXICO (MEX) Cristian Morales	*Also serves: • Aruba • Bonaire • Curacao • Saba • Sint Eustatius • Sint Maarten
	CARIBBEAN SUB-REGION (CRB)* Jessie Schutt-Aine *Based in Barbados	EL SALVADOR (SLV) Carlos Garzón	NICARAGUA (NIC) Ana Solis-Ortega Treasure	URUGUAY (URY) Giovanni Escalante
	CENTRAL AMERICAN SUB-REGION (CAM)* Juan Manuel Sotelo, a.i. *Based in El Salvador	GUATEMALA (GTM) Oscar Martin Barreneche	PANAMA (PAN) Gerardo Alfaro	VENEZUELA (VEN) Gerardo de Cosio, a.i
	CHILE (CHL) Fernando Leanes	GUYANA (GUY) William Adu-Krow	PARAGUAY (PRY) Luis Roberto Escoto	

