

Supplementary material to manuscript Martinez R, Soliz P, Campbell NRC, Lackland D, Whelton P, Orduz O. Association between population hypertension control and ischemic heart disease and stroke mortality in 36 countries of the Americas, 1990-2019. An ecological study. Rev Panam Salud Publica. 2022;46:e143. <https://doi.org/10.26633/RPSP.2022.143>

This material was part of the original submission and was sent to peer-review. It is posted as provided by the authors.

Supplementary Appendix

Appendix to the article titled **“Association between population hypertension control and ischemic heart disease in 36 countries of the Americas, 1990-2019. An ecological study”**.

This appendix provides methodological details, supplemental tables and figures, detailed results, additional data and information to complement the content of the article. The content is structured following the sequence of contents of the main article.

Table of Contents

Supplementary Appendix	1
List of countries and territories included in the analysis and their socio-demographic index value for 2019	3
Figure S1. Trend of the age-standardized death rates per 100,000 population due to ischemic heart disease (Left) and stroke (right) mortality in countries of the Americas, 1990-2019	5
Figure S2. Average annual percent change in the age-standardized death rates per 100,000 population from 1990 to 2019 by sex in the Region of the Americas and countries of the region.	6
Table S1. Level and trends of the age-standardized death rates (ASDR) and the age-standardized years of life lost due to premature death rates (ASYLLR) by cause and sex in the Region of the Americas and countries of the region in 2019	8
Figure S3. Average annual percent change of the age-standardized prevalence of hypertension control in the population from 1990 to 2019 by sex and country	14
Figure S4. Time trends in the age-standardized prevalence of controlled hypertension among adults aged 30-79 years in the population by sex and quintile of the socio-demographic index, countries of the Americas, 1990-2019	15
Table S2. Level and trends of the prevalence of the hypertension, previously diagnosis (awareness), treatment, and controlled hypertension among adults aged 30-79 years by sex in 2019 and average annual percentage change from 1990 to 2019 in the Region of the Americas and countries of the region	16
Table S3A. Association between age-standardized death rates (per 100,000 population) due to ischemic heart disease and the age-standardized prevalence of controlled hypertension in the population by sex and location, 2000-2019	21
Table S3B. Association between age-standardized death rates (per 100,000 population) due to stroke and the age-standardized prevalence of controlled hypertension in the population by sex and location, 2000-2019	25

List of countries and territories included in the analysis and their socio-demographic index value for 2019

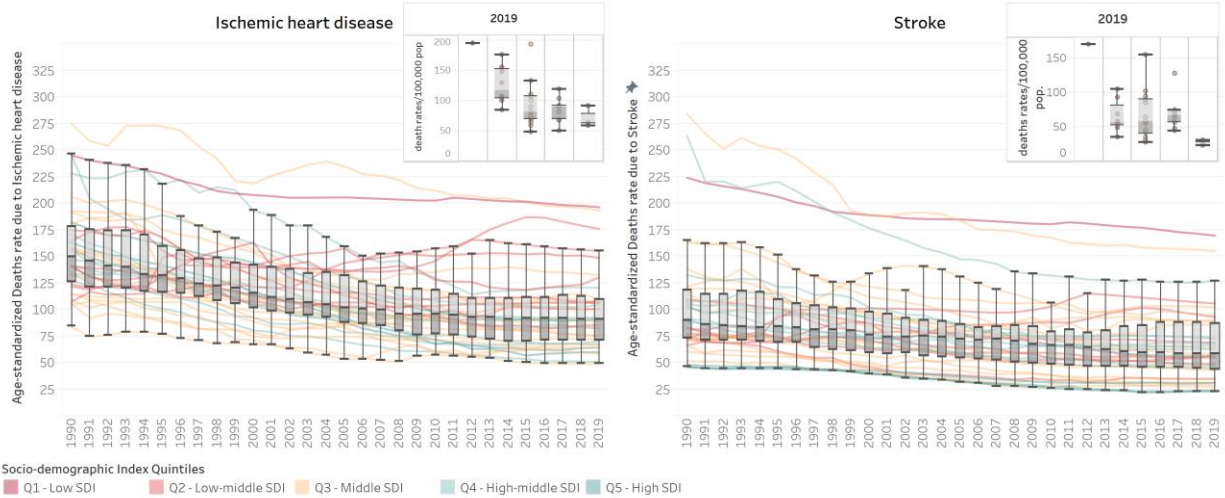
This table presents the complete list of 39 locations originally considered for our study. However, the study included 37 locations (excluding Bermuda, and US Virgin Island because of the lack of estimates of hypertension treatment cascade from NCDRisC study): the Region of the Americas and 36 countries and territories where data was available from the two sources (GBD study 2019, and NCD RisC study).

ISO3	Location Name	Data available from GBD 2019	Data available from NCDRisC study	Socio-demographic index, 2019	SDI quintile
AMR	Region of the Americas	Yes	Yes	NA	NA
ARG	Argentina	Yes	Yes	0.708	High-middle SDI
ATG	Antigua and Barbuda	Yes	Yes	0.743	High-middle SDI
BHS	Bahamas	Yes	Yes	0.796	High-middle SDI
BLZ	Belize	Yes	Yes	0.603	Low-middle SDI
BMU	Bermuda	Yes	No	0.813	High SDI
BOL	Bolivia (Plurinational State of)	Yes	Yes	0.566	Low-middle SDI
BRA	Brazil	Yes	Yes	0.64	Middle SDI
BRB	Barbados	Yes	Yes	0.742	High-middle SDI
CAN	Canada	Yes	Yes	0.873	High SDI
CHL	Chile	Yes	Yes	0.759	High-middle SDI
COL	Colombia	Yes	Yes	0.633	Middle SDI
CRI	Costa Rica	Yes	Yes	0.68	Middle SDI
CUB	Cuba	Yes	Yes	0.668	Middle SDI
DMA	Dominica	Yes	Yes	0.729	High-middle SDI
DOM	Dominican Republic	Yes	Yes	0.592	Low-middle SDI
ECU	Ecuador	Yes	Yes	0.64	Middle SDI
GRD	Grenada	Yes	Yes	0.669	Middle SDI
GTM	Guatemala	Yes	Yes	0.526	Low-middle SDI
GUY	Guyana	Yes	Yes	0.618	Middle SDI
HND	Honduras	Yes	Yes	0.496	Low-middle SDI
HTI	Haiti	Yes	Yes	0.432	Low SDI
JAM	Jamaica	Yes	Yes	0.684	Middle SDI
KNA	Saint Kitts and Nevis	Yes	Yes	0.746	High-middle SDI
LCA	Saint Lucia	Yes	Yes	0.67	Middle SDI
MEX	Mexico	Yes	Yes	0.649	Middle SDI
NIC	Nicaragua	Yes	Yes	0.517	Low-middle SDI
PAN	Panama	Yes	Yes	0.686	Middle SDI
PER	Peru	Yes	Yes	0.648	Middle SDI
PRI	Puerto Rico	Yes	Yes	0.814	High SDI
PRY	Paraguay	Yes	Yes	0.638	Middle SDI
SLV	El Salvador	Yes	Yes	0.573	Low-middle SDI
SUR	Suriname	Yes	Yes	0.636	Middle SDI
TTO	Trinidad and Tobago	Yes	Yes	0.757	High-middle SDI

URY	Uruguay	Yes	Yes	0.697	High-middle SDI
USA	United States of America	Yes	Yes	0.859	High SDI
VCT	Saint Vincent and the Grenadines	Yes	Yes	0.627	Middle SDI
VEN	Venezuela (Bolivarian Republic of)	Yes	Yes	0.607	Low-middle SDI
VIR	United States Virgin Islands	Yes	No	0.799	High SDI

ISO3 is the standard three-letter ISO 3166-1 country code. GBD = Global Burden of Disease, Injuries, and Risk Factors Study. NCDRisC = Noncommunicable Disease Risk Factors Collaboration. SDI = socio-demographic index. NA = not applicable. SDI quintiles: Low SDI (quintile 1); Low-middle SDI (quintile 2), Middle SDI (quintile 3), High-middle SDI (quintile 4, and High SDI (quintile 5).

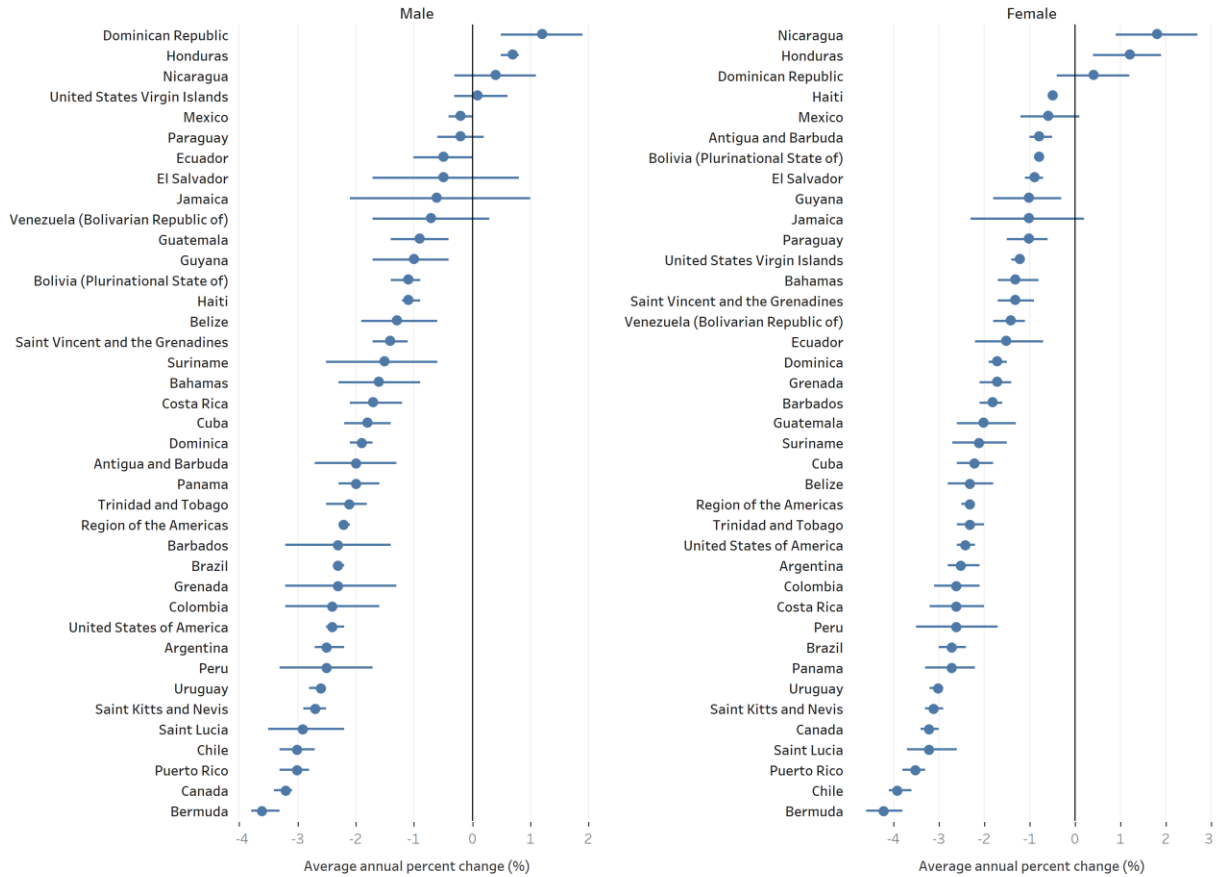
Figure S1. Trend of the age-standardized death rates per 100,000 population due to ischemic heart disease (Left) and stroke (right) mortality in countries of the Americas, 1990-2019.



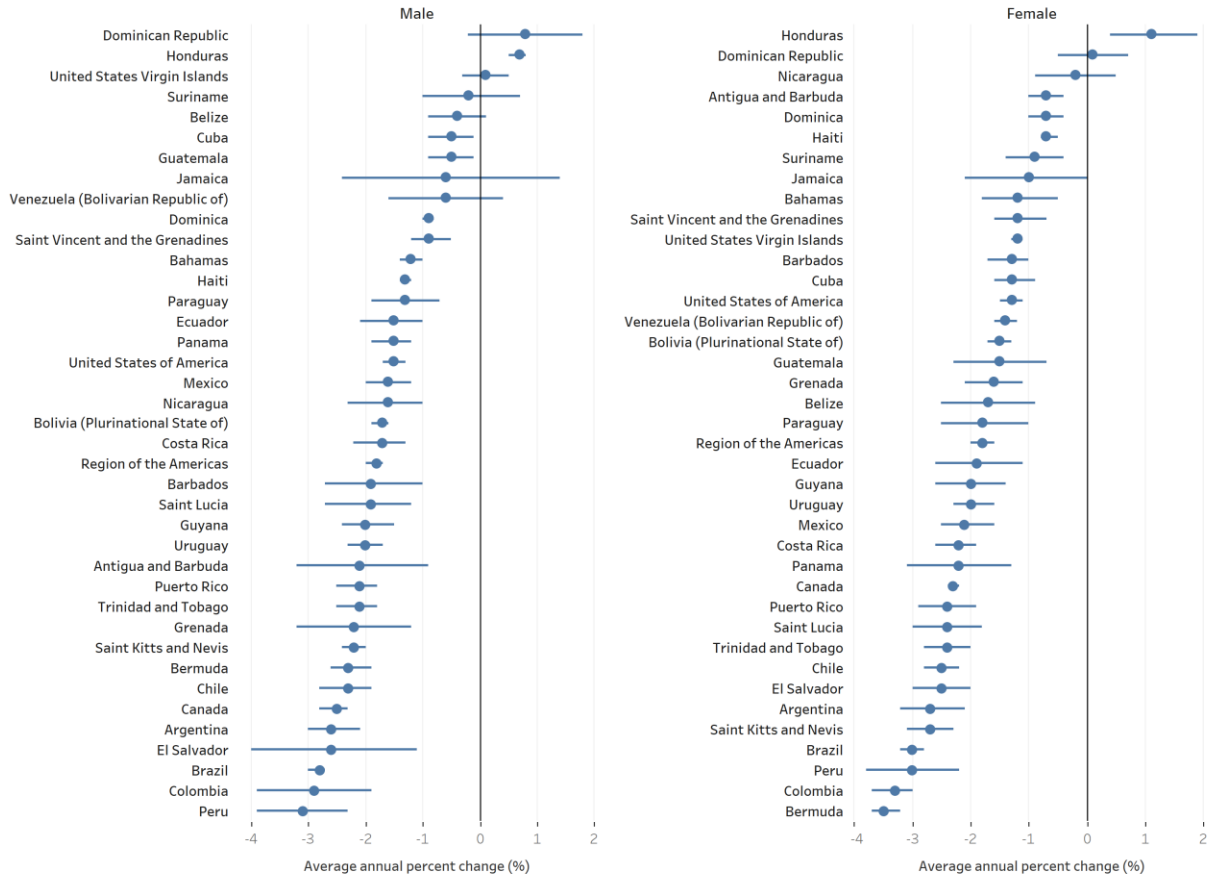
The time trends of the age-standardized death rates due to ischemic heart disease (left panel) and stroke (right panel) for each country is represented in lines. Small box-plot at the top-right of each panel represent the distribution of country's mortality by quintile of the socio-demographic index (SDI) in 2019. Countries are color-coded by quintile of the SDI. Box-plots per year are overlaid to inform on the central trends and distribution of countries over time.

Figure S2. Average annual percent change in the age-standardized death rates per 100,000 population from 1990 to 2019 by sex in the Region of the Americas and countries of the region.

Panel A: Ischemic heart disease



Panel B: Stroke



Each dot represents the point estimates of the average annual percent change (AAPC) and lines their 95% credible intervals. AAPC is a summary measure of trends over time, where $AAPC < 0$ equates to decreasing trends, $AAPC = 0$ equates constant trends, and $AAPC > 0$ equates increasing trends.

Table S1. Level and trends of the age-standardized death rates (ASDR) and the age-standardized years of life lost due to premature death rates (ASYLLR) by cause and sex in the Region of the Americas and countries of the region in 2019.

Location	Cause	Both sexes			Male			Female		
		ASDR (95% UI) 2019	Trends AAPC (95% CI), 1990-2019	Trends AAPC (95% CI) 2010-2019	ASDR (95% UI) 2019	Trends AAPC (95% CI), 1990-2019	Trends AAPC (95% CI) 2010-2019	ASDR (95% UI) 2019	Trends AAPC (95% CI), 1990-2019	Trends AAPC (95% CI) 2010-2019
Region of the Americas	Ischemic heart disease	87.5 (79.1 – 93.3)	-2.2 (-2.4 to -2.1)	-1 (-1.2 to -0.8)	112.4 (103.6 – 119.6)	-2.2 (-2.3 to -2.1)	-0.9 (-1.1 to -0.7)	66.9 (58.7 – 72.3)	-2.3 (-2.5 to -2.2)	-1.2 (-1.5 to -1)
Region of the Americas	Stroke	40.3 (36.2 – 43.1)	-1.8 (-1.9 to -1.6)	-1 (-1.2 to -0.8)	43.4 (39.8 – 46.2)	-1.8 (-2 to -1.7)	-0.9 (-1.1 to -0.7)	37.5 (33 – 40.5)	-1.8 (-2 to -1.6)	-1 (-1.1 to -0.8)
Region of the Americas	Ischemic stroke	21.7 (18.8 – 23.4)	-2 (-2.1 to -1.9)	-1 (-1.2 to -0.7)	22.6 (20.2 – 24.2)	-2.1 (-2.2 to -1.9)	-1 (-1.2 to -0.8)	20.6 (17.5 – 22.5)	-1.9 (-2 to -1.8)	-0.9 (-1.1 to -0.7)
Region of the Americas	Intracerebral hemorrhage	14.1 (13 – 15)	-1.8 (-1.9 to -1.6)	-1.1 (-1.3 to -0.9)	16.4 (15.2 – 17.6)	-1.8 (-1.9 to -1.6)	-1 (-1.2 to -0.8)	12 (10.9 – 12.9)	-1.8 (-2 to -1.7)	-1.3 (-1.5 to -1.1)
Region of the Americas	Subarachnoid hemorrhage	4.6 (4.2 – 4.9)	-0.6 (-0.7 to -0.6)	-0.4 (-0.5 to -0.4)	4.3 (3.6 – 4.7)	-0.4 (-0.5 to -0.3)	-0.2 (-0.2 to -0.1)	4.8 (4.4 – 5.2)	-0.8 (-0.9 to -0.7)	-0.6 (-0.7 to -0.4)
Argentina	Ischemic heart disease	82.1 (74.8 – 87.7)	-2.5 (-2.8 to -2.3)	-0.8 (-1.2 to -0.4)	107.8 (100.1 – 114.2)	-2.5 (-2.7 to -2.2)	-0.9 (-1.2 to -0.6)	61.3 (54 – 67.1)	-2.5 (-2.8 to -2.1)	-0.5 (-1.2 to 0.2)
Argentina	Stroke	47.3 (42.8 – 51.1)	-2.6 (-3.1 to -2.2)	-0.4 (-1.8 to 0.9)	56.4 (51.1 – 61.5)	-2.6 (-3 to -2.1)	-0.4 (-1.8 to 1)	40.1 (35.3 – 44)	-2.7 (-3.2 to -2.1)	-0.5 (-1.8 to 0.9)
Argentina	Ischemic stroke	22.6 (19.7 – 25.1)	-2.4 (-2.9 to -1.9)	-0.3 (-1.5 to 0.9)	26.1 (22.8 – 29.1)	-2.4 (-2.9 to -1.8)	-0.2 (-1.8 to 1.3)	20 (16.8 – 22.6)	-2.4 (-2.9 to -1.9)	-0.3 (-1.4 to 1)
Argentina	Intracerebral hemorrhage	19.9 (18 – 21.7)	-2.9 (-3.4 to -2.4)	-0.7 (-2.1 to 0.8)	25.7 (23.2 – 28.4)	-2.7 (-3.1 to -2.3)	-0.5 (-1.3 to 0.3)	15.1 (13.3 – 16.9)	-3.1 (-3.7 to -2.4)	-0.8 (-2.3 to 0.8)
Argentina	Subarachnoid hemorrhage	4.8 (4.4 – 5.3)	-2.4 (-2.6 to -2.1)	-0.2 (-0.5 to 0.2)	4.6 (4.1 – 5.4)	-2.5 (-2.8 to -2.2)	-0.2 (-0.5 to 0.2)	5 (4.4 – 5.5)	-2.3 (-2.5 to -2.1)	-0.2 (-0.4 to 0)
Antigua and Barbuda	Ischemic heart disease	89.3 (78.2 – 99.9)	-1.3 (-1.9 to -0.7)	-1.2 (-1.8 to -0.6)	97.9 (84.1 – 112.3)	-2 (-2.7 to -1.3)	-1.7 (-2.3 to -1.2)	81.4 (70.7 – 91.1)	-0.8 (-1 to -0.5)	-0.7 (-0.9 to -0.4)
Antigua and Barbuda	Stroke	72.5 (62.9 – 83.4)	-1.3 (-1.7 to -0.9)	-0.5 (-0.7 to -0.2)	72.7 (61.7 – 85.5)	-2.1 (-3.2 to -0.9)	-1.6 (-2.2 to -1)	72 (62.8 – 82.1)	-0.7 (-1 to -0.4)	0.4 (-0.2 to 0.9)
Antigua and Barbuda	Ischemic stroke	38.2 (32.8 – 43.6)	-0.8 (-1.2 to -0.5)	-0.1 (-0.3 to 0.2)	32.8 (27.6 – 38.6)	-1.7 (-2.9 to -0.4)	-0.9 (-1.6 to -0.3)	42.1 (36 – 48.1)	-0.3 (-0.7 to 0)	0.5 (-0.2 to 1.2)
Antigua and Barbuda	Intracerebral hemorrhage	29.5 (25.4 – 34.4)	-1.8 (-2.3 to -1.4)	-1.1 (-1.4 to -0.8)	35 (29.5 – 41.6)	-2.5 (-3.7 to -1.2)	-2.2 (-2.9 to -1.6)	25.1 (21.5 – 29.2)	-1.3 (-1.7 to -0.9)	0.1 (-0.7 to 0.8)
Antigua and Barbuda	Subarachnoid hemorrhage	4.8 (4 – 5.6)	-1 (-1.3 to -0.7)	-0.3 (-0.5 to -0.1)	4.9 (4 – 5.9)	-1.6 (-2.4 to -0.8)	-1.6 (-2 to -1.2)	4.8 (4 – 5.7)	-0.6 (-0.8 to -0.4)	0.6 (0.1 to 1.1)
Bahamas	Ischemic heart disease	92.4 (76.9 – 111.9)	-1.4 (-2.1 to -0.7)	-0.4 (-1.9 to 1.2)	120.2 (100.4 – 145)	-1.6 (-2.3 to -0.9)	-0.4 (-1.7 to 1)	70 (57.2 – 84.1)	-1.3 (-1.7 to -0.8)	-0.2 (-0.5 to 0.2)
Bahamas	Stroke	62.5 (52.3 – 74.7)	-1.3 (-1.4 to -1.1)	-0.4 (-0.7 to 0)	69.2 (56.9 – 83)	-1.2 (-1.4 to -1)	0.1 (-0.6 to 0.8)	56.9 (47 – 68.3)	-1.2 (-1.8 to -0.5)	-0.7 (-1 to -0.4)
Bahamas	Ischemic stroke	30.8 (25.4 – 36.4)	-1.1 (-1.7 to -0.5)	-0.6 (-1.4 to 0.2)	29.6 (24.4 – 35.1)	-1.3 (-2.2 to -0.4)	-0.3 (-1.6 to 1)	31.5 (25.7 – 37.5)	-1 (-1.8 to -0.3)	-0.7 (-1.1 to -0.3)
Bahamas	Intracerebral hemorrhage	27.8 (22.9 – 34)	-1.3 (-1.7 to -0.8)	-0.3 (-0.7 to 0.2)	35.6 (28.8 – 43.6)	-1.2 (-1.8 to -0.7)	-0.3 (-1.5 to 0.9)	21.6 (17.9 – 26.2)	-1.4 (-1.7 to -1.1)	-0.4 (-0.8 to 0)
Bahamas	Subarachnoid hemorrhage	3.9 (3.1 – 4.8)	-0.6 (-0.8 to -0.3)	0 (-0.1 to 0.2)	4 (3.2 – 5)	-0.5 (-0.7 to -0.4)	0.2 (-0.2 to 0.5)	3.8 (3 – 4.8)	-0.6 (-0.8 to -0.5)	0 (-0.3 to 0.2)
Belize	Ischemic heart disease	84.9 (74 – 95.5)	-1.8 (-2.5 to -1)	-1.1 (-1.6 to -0.5)	101.7 (88.3 – 116)	-1.3 (-1.9 to -0.6)	-0.3 (-0.8 to 0.3)	67.8 (58.4 – 76.5)	-2.3 (-2.8 to -1.8)	-2 (-2.7 to -1.3)
Belize	Stroke	55.5 (47.6 – 63.3)	-1 (-1.5 to -0.6)	-0.6 (-1.1 to -0.1)	61.5 (52.5 – 71.1)	-0.4 (-0.9 to 0.1)	0.1 (-0.3 to 0.6)	49.1 (42.1 – 56.2)	-1.7 (-2.5 to -0.9)	-1.8 (-2 to -1.6)
Belize	Ischemic stroke	26.2 (21.9 – 30)	-1 (-1.8 to -0.2)	-0.7 (-1.2 to -0.2)	26.5 (22.2 – 31)	-0.4 (-1 to 0.2)	0.1 (-0.4 to 0.5)	25.6 (21.5 – 29.2)	-1.4 (-2.4 to -0.5)	-1.5 (-1.8 to -1.3)
Belize	Intracerebral hemorrhage	26 (22.5 – 30)	-1.1 (-1.6 to -0.7)	-0.6 (-1.1 to -0.1)	31.9 (27.1 – 37.1)	-0.5 (-1 to -0.1)	0.2 (-0.2 to 0.7)	20 (17.2 – 22.9)	-2.1 (-2.8 to -1.3)	-2.2 (-2.4 to -1.9)
Belize	Subarachnoid hemorrhage	3.3 (2.8 – 4)	-0.8 (-1.2 to -0.5)	-0.3 (-0.4 to -0.1)	3.1 (2.5 – 4)	-0.8 (-0.9 to -0.6)	0.1 (0 to 0.2)	3.5 (3 – 4.2)	-0.9 (-1.1 to -0.6)	-0.7 (-1.1 to -0.2)
Bermuda	Ischemic heart disease	78.1 (65.5 – 92.4)	-3.8 (-4 to -3.6)	-1.1 (-1.4 to -0.8)	118.9 (102.8 – 137)	-3.6 (-3.8 to -3.3)	-1.2 (-1.6 to -0.8)	48 (37.5 – 58.9)	-4.2 (-4.6 to -3.8)	-1.4 (-2 to -0.8)
Bermuda	Stroke	32.2 (26.6 – 38.6)	-2.9 (-3 to -2.8)	-1.5 (-1.9 to -1.2)	43.4 (36.6 – 50.5)	-2.3 (-2.6 to -1.9)	-1.2 (-1.5 to -1)	23.6 (18.6 – 29.1)	-3.5 (-3.7 to -3.2)	-1.9 (-2.2 to -1.5)
Bermuda	Ischemic stroke	20.7 (16.7 – 24.7)	-2.8 (-2.9 to -2.6)	-1.6 (-2 to -1.2)	26.3 (21.8 – 30.7)	-2.2 (-2.5 to -1.9)	-1.3 (-1.7 to -0.9)	16.5 (12.7 – 20.3)	-3.3 (-3.6 to -3)	-1.9 (-2.3 to -1.5)
Bermuda	Intracerebral hemorrhage	8.9 (7.4 – 10.9)	-3.2 (-3.5 to -2.9)	-1.5 (-1.8 to -1.3)	13.4 (11 – 16)	-2.6 (-3 to -2.2)	-1.3 (-1.6 to -1)	5.4 (4.3 – 6.7)	-4 (-4.3 to -3.7)	-1.9 (-2.3 to -1.6)
Bermuda	Subarachnoid hemorrhage	2.7 (2.1 – 3.3)	-1.9 (-2.1 to -1.6)	-0.7 (-0.9 to -0.5)	3.8 (3 – 4.7)	-1.2 (-1.4 to -1)	-0.8 (-1 to -0.6)	1.8 (1.3 – 2.3)	-2.7 (-2.9 to -2.5)	-0.8 (-1.2 to -0.5)
Bolivia (Plurinational State of)	Ischemic heart disease	105.9 (76.2 – 136.3)	-1 (-1.1 to -0.8)	0.3 (0.1 to 0.4)	117.6 (83.9 – 153.6)	-1.1 (-1.4 to -0.9)	0.3 (0.2 to 0.4)	95.4 (66.5 – 128.1)	-0.8 (-0.9 to -0.7)	0.3 (0.2 to 0.4)
Bolivia (Plurinational State of)	Stroke	68.6 (50.7 – 90.3)	-1.6 (-1.7 to -1.5)	-0.6 (-0.7 to -0.4)	67.3 (45.1 – 91.6)	-1.7 (-1.9 to -1.6)	-0.4 (-0.6 to -0.3)	69.9 (51.4 – 92.6)	-1.5 (-1.7 to -1.3)	-0.7 (-0.8 to -0.5)
Bolivia (Plurinational State of)	Ischemic stroke	32.1 (23.4 – 42.4)	-0.9 (-1 to -0.8)	0.4 (0.3 to 0.5)	31.6 (20.5 – 45.5)	-1.1 (-1.2 to -0.9)	0.4 (0.2 to 0.6)	32.5 (23.8 – 43.5)	-0.7 (-0.8 to -0.6)	0.4 (0.3 to 0.5)

Bolivia (Plurinational State of)	Intracerebral hemorrhage	26.4 (19 – 35.7)	-2.3 (-2.5 to -2.2)	-1.3 (-1.3 to -1.2)	27.7 (17.8 – 40.4)	-2.4 (-2.6 to -2.2)	-1.2 (-1.2 to -1.1)	25.3 (18.4 – 34.5)	-2.3 (-2.4 to -2.2)	-1.5 (-1.6 to -1.3)
Bolivia (Plurinational State of)	Subarachnoid hemorrhage	10.1 (6.7 – 14.2)	-1.5 (-1.7 to -1.3)	-1.4 (-1.9 to -0.9)	7.9 (4.7 – 12.2)	-1.5 (-1.6 to -1.4)	-1.2 (-1.4 to -1)	12.1 (7.7 – 17.2)	-1.5 (-1.7 to -1.4)	-1.7 (-2 to -1.5)
Brazil	Ischemic heart disease	74.9 (67.9 – 79.1)	-2.5 (-2.6 to -2.4)	-2 (-2.1 to -1.9)	95.6 (87.7 – 101.3)	-2.3 (-2.4 to -2.2)	-1.8 (-1.9 to -1.7)	57.9 (51 – 62.6)	-2.7 (-3 to -2.4)	-1.9 (-2.1 to -1.6)
Brazil	Stroke	58.1 (52.6 – 61.8)	-3 (-3.1 to -2.8)	-2.2 (-2.5 to -1.8)	68.1 (62.3 – 72.5)	-2.8 (-3 to -2.7)	-2.1 (-2.5 to -1.8)	50.3 (44.2 – 54.4)	-3 (-3.2 to -2.8)	-2.2 (-2.5 to -1.9)
Brazil	Ischemic stroke	33.9 (29.7 – 36.6)	-2.9 (-3.1 to -2.8)	-2.1 (-2.4 to -1.7)	40.7 (36 – 43.8)	-2.8 (-2.9 to -2.6)	-2.1 (-2.5 to -1.6)	28.7 (24.5 – 31.7)	-3 (-3.2 to -2.8)	-2 (-2.4 to -1.7)
Brazil	Intracerebral hemorrhage	18.6 (17.3 – 19.8)	-3.3 (-3.5 to -3.2)	-2.5 (-2.8 to -2.2)	22.8 (20.8 – 24.4)	-3.1 (-3.2 to -2.9)	-2.3 (-2.6 to -2)	15.2 (13.7 – 16.4)	-3.5 (-3.7 to -3.4)	-2.7 (-3 to -2.4)
Brazil	Subarachnoid hemorrhage	5.5 (5 – 5.9)	-1.2 (-1.4 to -1.1)	-1.4 (-1.6 to -1.1)	4.7 (4 – 5.2)	-1.3 (-1.4 to -1.2)	-1.1 (-1.3 to -1)	6.3 (5.6 – 6.8)	-1.2 (-1.4 to -1.1)	-1.5 (-1.8 to -1.2)
Barbados	Ischemic heart disease	69.8 (59.5 – 80.6)	-2 (-2.5 to -1.6)	0 (-0.4 to 0.4)	78 (65.9 – 90.5)	-2.3 (-3.2 to -1.4)	-0.1 (-0.9 to 0.6)	62.4 (52.7 – 72.4)	-1.8 (-2.1 to -1.6)	0.1 (-0.1 to 0.4)
Barbados	Stroke	66.7 (55.5 – 78.1)	-1.6 (-1.9 to -1.3)	-0.1 (-0.3 to 0.2)	65.7 (54.4 – 77.9)	-1.9 (-2.7 to -1)	0.3 (-0.3 to 1)	66.4 (55.2 – 78)	-1.3 (-1.7 to -1)	0 (-0.3 to 0.2)
Barbados	Ischemic stroke	41.2 (34.3 – 48.2)	-1.6 (-1.9 to -1.3)	0 (-0.3 to 0.3)	35.7 (29.4 – 42.3)	-1.9 (-2.8 to -1.1)	0.1 (-0.6 to 0.9)	44.8 (36.9 – 52.7)	-1.3 (-1.7 to -0.9)	0 (-0.2 to 0.3)
Barbados	Intracerebral hemorrhage	21 (17.3 – 25.2)	-1.7 (-1.9 to -1.5)	-0.1 (-0.5 to 0.2)	25.1 (20.3 – 30.7)	-1.8 (-2.4 to -1.3)	0.7 (-0.2 to 1.6)	17.4 (14.3 – 21.4)	-1.5 (-1.7 to -1.3)	-0.2 (-0.3 to -0.1)
Barbados	Subarachnoid hemorrhage	4.5 (3.6 – 5.5)	-1.1 (-1.2 to -0.9)	0 (-0.1 to 0.2)	4.9 (3.9 – 6.1)	-1.3 (-1.5 to -1)	0.1 (-0.5 to 0.7)	4.2 (3.3 – 5.2)	-0.8 (-1.1 to -0.5)	0.2 (-0.7 to 1)
Canada	Ischemic heart disease	63.9 (56.9 – 68.7)	-3.2 (-3.3 to -3)	-1.2 (-1.7 to -0.8)	85.1 (78.1 – 90.3)	-3.2 (-3.4 to -3.1)	-1.2 (-1.7 to -0.7)	46 (38.7 – 51.5)	-3.2 (-3.4 to -3)	-1.2 (-1.8 to -0.7)
Canada	Stroke	23.6 (19.9 – 26.2)	-2.4 (-2.6 to -2.2)	-1 (-1.4 to -0.7)	24.3 (21.3 – 26.8)	-2.5 (-2.8 to -2.3)	-1.1 (-1.7 to -0.5)	22.6 (18.7 – 25.6)	-2.3 (-2.4 to -2.2)	-0.9 (-1.3 to -0.6)
Canada	Ischemic stroke	14.6 (11.9 – 16.5)	-2.8 (-3 to -2.6)	-1.2 (-1.6 to -0.7)	14.3 (12.2 – 16.1)	-3 (-3.3 to -2.7)	-1.1 (-1.8 to -0.4)	14.4 (11.6 – 16.5)	-2.6 (-2.8 to -2.4)	-1.1 (-1.5 to -0.7)
Canada	Intracerebral hemorrhage	6.2 (5.5 – 6.9)	-1.8 (-2 to -1.6)	-0.9 (-1.4 to -0.5)	7.3 (6.4 – 8.2)	-1.9 (-2.2 to -1.6)	-1 (-1.5 to -0.4)	5.3 (4.5 – 6)	-1.7 (-2 to -1.5)	-1 (-1.4 to -0.6)
Canada	Subarachnoid hemorrhage	2.8 (2.4 – 3.1)	-1.4 (-1.5 to -1.3)	-0.6 (-0.7 to -0.5)	2.7 (2.3 – 3.1)	-1 (-1.1 to -0.8)	-0.7 (-0.9 to -0.5)	2.9 (2.5 – 3.3)	-1.7 (-1.9 to -1.5)	-0.5 (-0.9 to -0.1)
Chile	Ischemic heart disease	50.4 (45.3 – 54)	-3.3 (-3.6 to -3.1)	-1.8 (-2.3 to -1.4)	65.6 (60 – 70.1)	-3 (-3.3 to -2.7)	-2 (-2.3 to -1.7)	37.6 (32.4 – 41.2)	-3.9 (-4.1 to -3.6)	-1.7 (-2.3 to -1.1)
Chile	Stroke	44.3 (39 – 48.2)	-2.4 (-2.7 to -2.1)	-2.1 (-2.8 to -1.4)	49.4 (44 – 54.1)	-2.3 (-2.8 to -1.9)	-2.2 (-3 to -1.4)	40 (34.8 – 44)	-2.5 (-2.8 to -2.2)	-2 (-2.7 to -1.4)
Chile	Ischemic stroke	27.1 (23.2 – 30)	-2.2 (-2.5 to -1.8)	-1.9 (-3 to -0.9)	30.2 (26.2 – 33.7)	-2.1 (-2.5 to -1.6)	-2.1 (-2.9 to -1.4)	24.5 (20.5 – 27.3)	-2.3 (-2.7 to -1.9)	-1.8 (-2.9 to -0.8)
Chile	Intracerebral hemorrhage	13 (11.6 – 14.3)	-3.2 (-3.6 to -2.8)	-2.4 (-3.5 to -1.4)	15.4 (13.5 – 17.4)	-3.1 (-3.7 to -2.5)	-2.4 (-3.3 to -1.6)	10.8 (9.5 – 12)	-3.4 (-3.8 to -3)	-2.5 (-3.2 to -1.8)
Chile	Subarachnoid hemorrhage	4.3 (3.7 – 4.8)	-0.6 (-0.9 to -0.4)	-1.3 (-2 to -0.6)	3.8 (3.1 – 4.4)	-0.4 (-0.6 to -0.3)	-1.4 (-1.7 to -1)	4.6 (4 – 5.2)	-0.8 (-1.1 to -0.4)	-1.3 (-2.3 to -0.4)
Colombia	Ischemic heart disease	75.3 (59 – 93.9)	-2.5 (-3.1 to -1.8)	-2.3 (-2.5 to -2.2)	90.7 (70.3 – 114.6)	-2.4 (-3.2 to -1.6)	-2.3 (-2.6 to -2.1)	62.6 (48.1 – 77.2)	-2.6 (-3.1 to -2.1)	-1.8 (-2.2 to -1.4)
Colombia	Stroke	30.9 (23.8 – 38.9)	-3.2 (-3.7 to -2.7)	-2.2 (-2.6 to -1.8)	31.9 (24.6 – 41.1)	-2.9 (-3.9 to -1.9)	-2.2 (-2.9 to -1.4)	30 (22.8 – 37.7)	-3.3 (-3.7 to -3)	-2.1 (-2.4 to -1.8)
Colombia	Ischemic stroke	14.7 (11.2 – 18.6)	-3.4 (-3.9 to -2.9)	-2.3 (-2.7 to -1.8)	15.5 (11.7 – 19.9)	-3.3 (-4.3 to -2.3)	-2.2 (-3.1 to -1.4)	14.1 (10.4 – 17.9)	-3.6 (-4 to -3.2)	-2.2 (-2.6 to -1.8)
Colombia	Intracerebral hemorrhage	10 (7.7 – 12.8)	-3.8 (-4.1 to -3.5)	-2.7 (-3.2 to -2.1)	11.3 (8.5 – 14.8)	-3.2 (-3.9 to -2.6)	-2.5 (-3.4 to -1.6)	9 (6.9 – 11.6)	-4.3 (-4.5 to -4.1)	-2.8 (-3.2 to -2.5)
Colombia	Subarachnoid hemorrhage	6.1 (4.6 – 8)	-0.2 (-0.4 to -0.1)	-1.1 (-1.3 to -0.8)	5.2 (3.7 – 6.9)	-0.3 (-0.6 to -0.1)	-1.5 (-1.7 to -1.4)	6.9 (5.1 – 9.2)	-0.3 (-0.6 to 0)	-1 (-1.4 to -0.5)
Costa Rica	Ischemic heart disease	71.5 (56 – 88.9)	-2.2 (-2.6 to -1.7)	-0.4 (-1 to 0.2)	94.2 (74.1 – 118.8)	-1.7 (-2.1 to -1.2)	-0.2 (-0.8 to 0.5)	52.2 (40.7 – 64.5)	-2.6 (-3.2 to -2)	-0.5 (-1.1 to 0)
Costa Rica	Stroke	28.5 (21.9 – 35.3)	-2 (-2.4 to -1.7)	0.6 (0 to 1.1)	31.4 (24.4 – 39.3)	-1.7 (-2.2 to -1.3)	0.6 (0 to 1.2)	25.9 (19.7 – 32.4)	-2.2 (-2.6 to -1.9)	0.4 (-0.1 to 0.9)
Costa Rica	Ischemic stroke	16.3 (12.3 – 20.4)	-1.8 (-2.2 to -1.5)	0.9 (0.4 to 1.4)	17.2 (13 – 21.9)	-1.8 (-2.2 to -1.4)	0.9 (0.4 to 1.5)	15.4 (11.3 – 19.4)	-1.9 (-2.2 to -1.5)	1.1 (0.6 to 1.6)
Costa Rica	Intracerebral hemorrhage	8.8 (6.7 – 11)	-2.6 (-3 to -2.1)	-0.1 (-0.8 to 0.5)	10.9 (8.4 – 13.9)	-1.9 (-2.5 to -1.4)	0.3 (-0.5 to 1)	6.9 (5.3 – 8.7)	-3.2 (-3.6 to -2.7)	-0.8 (-1.4 to -0.1)
Costa Rica	Subarachnoid hemorrhage	3.4 (2.5 – 4.4)	-1.1 (-1.8 to -0.5)	-0.2 (-0.6 to 0.2)	3.3 (2.1 – 4.5)	-0.6 (-1.2 to 0)	0 (-0.5 to 0.6)	3.5 (2.6 – 4.5)	-1.4 (-2.2 to -0.7)	0 (-0.4 to 0.5)
Cuba	Ischemic heart disease	109.8 (92.1 – 131)	-2 (-2.4 to -1.7)	-0.1 (-0.7 to 0.4)	130.2 (108 – 156.1)	-1.8 (-2.2 to -1.4)	0.2 (-0.4 to 0.8)	91.6 (75.8 – 108.6)	-2.2 (-2.6 to -1.8)	-0.4 (-1 to 0.1)
Cuba	Stroke	54 (44.2 – 64.9)	-0.9 (-1.2 to -0.6)	-0.3 (-0.9 to 0.4)	59.1 (48.3 – 71.7)	-0.5 (-0.9 to -0.1)	0.2 (-0.5 to 0.9)	49.1 (40.2 – 59)	-1.3 (-1.6 to -0.9)	-0.7 (-1.3 to 0)
Cuba	Ischemic stroke	34.2 (27.9 – 41.2)	-0.6 (-0.7 to -0.5)	-0.6 (-0.7 to -0.5)	35.9 (29.2 – 43.5)	-0.3 (-1 to 0.5)	0.2 (-0.5 to 1)	32.5 (26.3 – 39)	-0.9 (-1.1 to -0.8)	-0.9 (-1.1 to -0.8)
Cuba	Intracerebral hemorrhage	16.9 (13.7 – 20.4)	-1.6 (-2.2 to -1)	-0.6 (-1.2 to -0.1)	20.5 (16.4 – 25.1)	-1 (-1.5 to -0.6)	0.1 (-0.5 to 0.7)	13.6 (11.1 – 16.4)	-2.2 (-2.5 to -1.9)	-1.5 (-2.1 to -0.8)
Cuba	Subarachnoid hemorrhage	2.9 (2.3 – 3.5)	-1.2 (-1.3 to -1.1)	-0.1 (-0.3 to 0.1)	2.6 (2.1 – 3.3)	-1.1 (-1.4 to -0.8)	-0.1 (-0.5 to 0.2)	3 (2.4 – 3.8)	-1.4 (-1.5 to -1.2)	-0.2 (-0.3 to 0)
Dominica	Ischemic heart disease	89.4 (75.5 – 105.9)	-1.7 (-1.8 to -1.6)	-0.2 (-0.4 to -0.1)	93.5 (76 – 111.9)	-1.9 (-2.1 to -1.7)	-0.3 (-0.6 to -0.1)	82.8 (69.4 – 98.2)	-1.7 (-1.9 to -1.5)	-0.2 (-0.4 to 0.1)
Dominica	Stroke	73.7 (61.9 – 87.1)	-0.7 (-0.8 to -0.6)	-0.2 (-0.4 to 0)	73.6 (60.1 – 90.4)	-0.9 (-1 to -0.8)	-0.4 (-0.5 to -0.2)	71.6 (59.7 – 85.4)	-0.7 (-1 to -0.4)	-0.1 (-0.2 to 0)

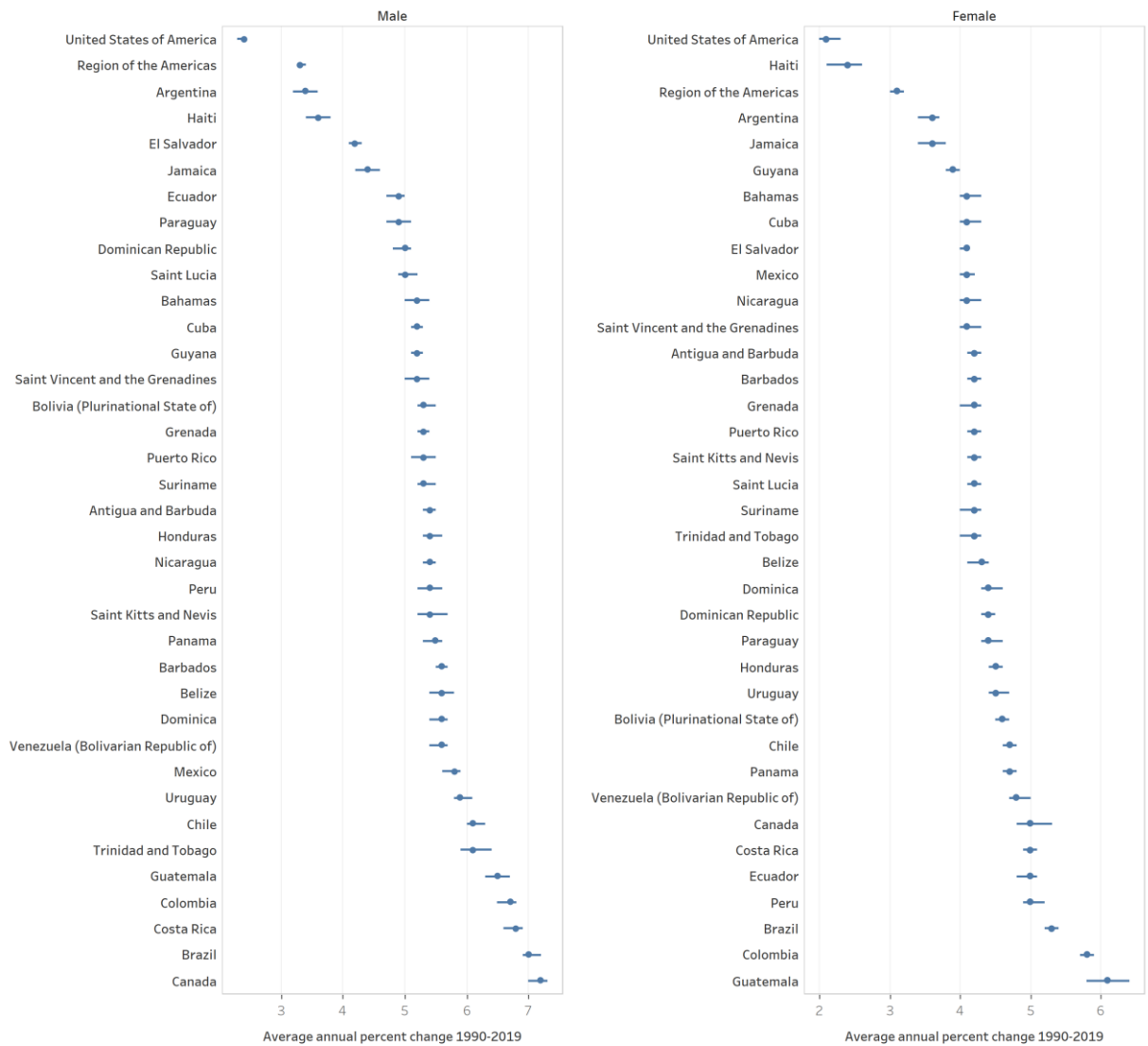
Dominica	Ischemic stroke	43.6 (36.3 – 51.3)	-0.3 (-0.4 to -0.2)	-0.2 (-0.3 to 0)	37.2 (29.8 – 46.2)	-0.5 (-0.8 to -0.3)	-0.4 (-0.5 to -0.3)	47.5 (39 – 56.8)	-0.2 (-0.5 to 0.1)	0 (-0.2 to 0.2)
Dominica	Intracerebral hemorrhage	25.9 (21.3 – 31.7)	-1.3 (-1.4 to -1.2)	-0.2 (-0.3 to -0.1)	31.5 (25.1 – 39.2)	-1.2 (-1.5 to -1)	-0.2 (-0.8 to 0.3)	20.6 (16.4 – 25.6)	-1.6 (-1.8 to -1.4)	-0.5 (-0.9 to -0.2)
Dominica	Subarachnoid hemorrhage	4.2 (3.3 – 5.4)	-0.8 (-1 to -0.7)	0.3 (0 to 0.6)	5 (3.7 – 6.9)	-0.8 (-1 to -0.6)	0.3 (-0.1 to 0.7)	3.6 (2.8 – 4.7)	-1 (-1.1 to -0.8)	0.2 (0.1 to 0.4)
Dominican Republic	Ischemic heart disease	175.6 (139.7 – 217.6)	0.9 (0.3 to 1.4)	1.3 (0.3 to 2.3)	211.7 (164.6 – 266)	1.2 (0.5 to 1.9)	1.2 (-0.3 to 2.7)	141.7 (112.8 – 174.9)	0.4 (-0.4 to 1.2)	0.9 (0.2 to 1.6)
Dominican Republic	Stroke	92.7 (73.2 – 119.2)	0.5 (-0.1 to 1)	0.7 (-0.3 to 1.6)	103.4 (77.1 – 136.7)	0.8 (-0.2 to 1.8)	0.7 (-1 to 2.4)	82.4 (65.6 – 105.8)	0.1 (-0.5 to 0.7)	0.7 (-0.3 to 1.8)
Dominican Republic	Ischemic stroke	44.3 (35.4 – 56)	0.7 (0.3 to 1.2)	0.6 (-0.2 to 1.5)	45.8 (34.9 – 58.8)	1 (0.3 to 1.7)	0.4 (-0.9 to 1.7)	42.6 (33.5 – 54)	0.5 (-0.2 to 1.2)	0.8 (0.2 to 1.5)
Dominican Republic	Intracerebral hemorrhage	43.4 (32.8 – 57.6)	0.2 (-0.5 to 0.9)	0.7 (-0.5 to 2)	53.4 (37.8 – 73.2)	0.6 (-0.4 to 1.6)	0.9 (-1.3 to 3.1)	34.1 (26.4 – 45.1)	-0.5 (-1 to 0.1)	0.6 (-0.3 to 1.6)
Dominican Republic	Subarachnoid hemorrhage	5 (3.5 – 6.8)	0.6 (0.1 to 1.1)	0.6 (0 to 1.2)	4.3 (2.5 – 6.3)	0.7 (0.3 to 1)	0.8 (0.3 to 1.3)	5.7 (4 – 7.8)	0.7 (0.2 to 1.2)	0.7 (-0.2 to 1.6)
Ecuador	Ischemic heart disease	81.8 (66.6 – 101.4)	-0.8 (-1.5 to -0.2)	0.2 (-0.3 to 0.6)	98.2 (79.6 – 124.1)	-0.5 (-1 to 0)	0.2 (-0.6 to 1)	66.9 (54.6 – 81)	-1.5 (-2.2 to -0.7)	-0.4 (-0.7 to -0.1)
Ecuador	Stroke	44.9 (36.5 – 56)	-1.5 (-1.9 to -1.1)	-0.3 (-0.6 to 0)	46.6 (36.9 – 58.8)	-1.5 (-2.1 to -1)	-0.1 (-0.8 to 0.6)	43.2 (35.2 – 53.2)	-1.9 (-2.6 to -1.1)	-1.2 (-1.6 to -0.9)
Ecuador	Ischemic stroke	24 (19.5 – 29.7)	-1 (-1.4 to -0.5)	-0.4 (-0.7 to -0.1)	24.7 (19.2 – 31.9)	-0.8 (-1.5 to -0.2)	0.1 (-0.3 to 0.5)	23.3 (18.8 – 28.4)	-1.4 (-2.1 to -0.6)	-1.2 (-1.5 to -0.9)
Ecuador	Intracerebral hemorrhage	14.1 (11.2 – 17.8)	-2.6 (-3.1 to -2)	-0.6 (-1.2 to 0)	15.6 (12 – 20.1)	-2.4 (-3 to -1.9)	-0.5 (-1.3 to 0.3)	12.7 (10.1 – 16.1)	-2.8 (-3.2 to -2.3)	-0.7 (-1.3 to -0.2)
Ecuador	Subarachnoid hemorrhage	6.8 (5.2 – 8.6)	-1.1 (-1.8 to -0.4)	0.1 (-1.1 to 1.3)	6.3 (4.2 – 8.3)	-1 (-1.6 to -0.4)	0.3 (-0.7 to 1.3)	7.2 (5.7 – 9.2)	-1.2 (-1.9 to -0.4)	-0.2 (-0.5 to 0)
Grenada	Ischemic heart disease	107.1 (97.2 – 116.3)	-1.9 (-2.5 to -1.2)	-0.6 (-2.3 to 1.1)	132.6 (122.2 – 143.9)	-2.3 (-3.2 to -1.3)	-2.9 (-5 to -0.9)	85.4 (75.7 – 94.5)	-1.7 (-2.1 to -1.4)	0.3 (0.1 to 0.6)
Grenada	Stroke	94.5 (84.7 – 103.6)	-1.8 (-2.4 to -1.3)	-1.1 (-2.3 to 0.1)	95.6 (85.9 – 106.5)	-2.2 (-3.2 to -1.2)	-4.2 (-6.4 to -2)	90.3 (79.7 – 100.4)	-1.6 (-2.1 to -1.1)	0.4 (0.1 to 0.6)
Grenada	Ischemic stroke	57.2 (49.8 – 63.2)	-1.6 (-2.3 to -0.9)	-1 (-2.4 to 0.4)	52.5 (45.7 – 59.2)	-2.2 (-3.4 to -1)	-4.9 (-7.5 to -2.3)	58.1 (49.9 – 65.2)	-1.4 (-1.9 to -0.8)	0.7 (0.4 to 0.9)
Grenada	Intracerebral hemorrhage	32.2 (28.9 – 36)	-2.2 (-2.7 to -1.7)	-1.3 (-2.4 to -0.3)	38.1 (33.7 – 43.2)	-2.3 (-2.9 to -1.7)	-3.5 (-4.6 to -2.5)	26.8 (23.9 – 30.1)	-2.3 (-2.7 to -1.8)	-0.1 (-0.4 to 0.1)
Grenada	Subarachnoid hemorrhage	5.1 (4.4 – 5.9)	-1.6 (-1.9 to -1.3)	-1.3 (-1.5 to -1)	5 (4.3 – 5.8)	-2.1 (-2.6 to -1.6)	-3 (-4.6 to -1.3)	5.3 (4.4 – 6.2)	-1.2 (-1.5 to -1)	-0.5 (-0.8 to -0.2)
Guatemala	Ischemic heart disease	106.3 (87.4 – 126.2)	-1.5 (-1.9 to -1)	-0.5 (-0.8 to -0.3)	127.6 (106.2 – 149.6)	-0.9 (-1.4 to -0.4)	-0.5 (-1.4 to 0.4)	93.5 (76 – 110.5)	-2 (-2.6 to -1.3)	-0.3 (-0.6 to 0)
Guatemala	Stroke	48.5 (39.3 – 58.8)	-1.1 (-1.7 to -0.5)	-0.9 (-1.6 to -0.1)	54.5 (44.5 – 65.7)	-0.5 (-0.9 to -0.1)	-0.6 (-1.1 to 0)	45.4 (36.5 – 55.3)	-1.5 (-2.3 to -0.7)	-1 (-1.8 to -0.1)
Guatemala	Ischemic stroke	22.6 (18.2 – 27.2)	-1.1 (-1.6 to -0.6)	-0.9 (-1.5 to -0.3)	26.4 (21.6 – 31.5)	-0.4 (-0.8 to 0)	-0.6 (-1.1 to -0.1)	20.7 (16.5 – 25.4)	-1.5 (-2 to -1)	-1 (-1.7 to -0.3)
Guatemala	Intracerebral hemorrhage	22.6 (18.1 – 28.1)	-1.2 (-1.7 to -0.7)	-1 (-1.3 to -0.7)	24.8 (20 – 31.1)	-0.7 (-1.3 to -0.1)	-0.7 (-1.4 to 0)	21.3 (17 – 26.6)	-1.7 (-2.4 to -0.9)	-1.1 (-1.6 to -0.7)
Guatemala	Subarachnoid hemorrhage	3.3 (2.6 – 4.3)	0.1 (-0.2 to 0.4)	0.2 (-0.1 to 0.5)	3.3 (2.5 – 4.3)	0.4 (0.2 to 0.6)	0.3 (0 to 0.7)	3.4 (2.6 – 4.5)	-0.1 (-0.7 to 0.4)	0.1 (-0.1 to 0.3)
Guyana	Ischemic heart disease	193 (155.8 – 233.9)	-1.2 (-1.5 to -0.8)	-1 (-1.2 to -0.7)	227.8 (182.2 – 279.8)	-1 (-1.7 to -0.4)	-0.9 (-1.1 to -0.6)	160.6 (131 – 195.1)	-1 (-1.8 to -0.3)	-1.2 (-1.9 to -0.6)
Guyana	Stroke	154.8 (123.4 – 190.2)	-2 (-2.7 to -1.4)	-0.8 (-1.1 to -0.4)	164.8 (129.7 – 203.8)	-2 (-2.4 to -1.5)	-0.6 (-1.1 to -0.1)	144.9 (116.7 – 177.1)	-2 (-2.6 to -1.4)	-0.9 (-1.3 to -0.5)
Guyana	Ischemic stroke	79.7 (64 – 97.7)	-1.4 (-2 to -0.7)	-0.5 (-0.9 to -0.1)	81.5 (64.6 – 102.2)	-1.4 (-2 to -0.7)	-0.7 (-1 to -0.5)	77.1 (61.4 – 94)	-1.3 (-2 to -0.5)	-0.6 (-1.1 to -0.1)
Guyana	Intracerebral hemorrhage	68.4 (53.1 – 85.4)	-2.7 (-3.1 to -2.3)	-1.2 (-1.7 to -0.7)	76.4 (58.7 – 96.6)	-2.6 (-2.9 to -2.2)	-0.8 (-1.2 to -0.4)	61 (48 – 76.1)	-2.8 (-3.5 to -2)	-1.4 (-2.1 to -0.8)
Guyana	Subarachnoid hemorrhage	6.7 (5.1 – 8.7)	-1.2 (-1.7 to -0.7)	-0.3 (-0.6 to 0)	6.8 (4.9 – 8.9)	-1.4 (-2.1 to -0.7)	-0.4 (-0.6 to -0.1)	6.7 (5.1 – 8.8)	-1 (-1.5 to -0.4)	-0.3 (-0.7 to 0)
Honduras	Ischemic heart disease	154.8 (126.9 – 189.4)	0.8 (0.5 to 1.2)	0.6 (0.1 to 1.1)	180.4 (140.7 – 223.8)	0.7 (0.5 to 0.8)	1.6 (1.3 to 2)	132 (107.5 – 161.6)	1.2 (0.4 to 1.9)	-0.6 (-1.2 to 0.1)
Honduras	Stroke	105.5 (84.8 – 135.6)	0.9 (0.5 to 1.3)	0.3 (-0.4 to 0.9)	105.5 (80.6 – 143)	0.7 (0.5 to 0.8)	1.2 (0.9 to 1.4)	105.4 (82.2 – 139)	1.1 (0.4 to 1.9)	-0.8 (-1.5 to -0.2)
Honduras	Ischemic stroke	55 (44.8 – 71.4)	1.4 (1 to 1.7)	0.5 (0.2 to 0.9)	57.1 (43.6 – 79)	0.9 (0.7 to 1.2)	1.7 (1.2 to 2.2)	53.1 (41.7 – 68.6)	1.8 (1 to 2.5)	-0.5 (-1.2 to 0.1)
Honduras	Intracerebral hemorrhage	39.7 (31 – 52.5)	0.5 (0 to 0.9)	-0.2 (-0.9 to 0.6)	39.8 (27.9 – 56.3)	0.4 (0.3 to 0.5)	0.7 (0.5 to 0.9)	39.6 (28.3 – 54.8)	0.5 (-0.2 to 1.2)	-1.1 (-1.8 to -0.3)
Honduras	Subarachnoid hemorrhage	10.8 (7.3 – 14.8)	0.6 (0.2 to 0.9)	-0.4 (-0.9 to 0.1)	8.6 (5.1 – 13)	0.1 (0 to 0.2)	-0.2 (-0.5 to 0.2)	12.8 (8.6 – 18.5)	0.8 (0.4 to 1.2)	-0.9 (-1.3 to -0.5)
Haiti	Ischemic heart disease	196 (142.7 – 265.8)	-0.8 (-0.9 to -0.7)	-0.4 (-0.6 to -0.2)	199 (146.9 – 267.4)	-1.1 (-1.2 to -0.9)	-0.2 (-0.3 to -0.1)	192 (123.6 – 276.7)	-0.5 (-0.6 to -0.4)	-0.6 (-0.7 to -0.4)
Haiti	Stroke	169.3 (113.5 – 242.3)	-0.9 (-1.1 to -0.8)	-0.7 (-0.9 to -0.6)	143.9 (93.8 – 213.8)	-1.3 (-1.4 to -1.2)	-0.6 (-0.7 to -0.5)	192 (123.6 – 278.8)	-0.7 (-0.8 to -0.5)	-0.8 (-1 to -0.6)
Haiti	Ischemic stroke	77.7 (52.5 – 116.1)	-0.4 (-0.5 to -0.3)	-0.2 (-0.4 to 0)	61.8 (40.4 – 104.2)	-0.9 (-0.9 to -0.8)	-0.3 (-0.4 to -0.2)	91.9 (58.4 – 132)	-0.1 (-0.2 to 0.1)	-0.2 (-0.4 to -0.1)
Haiti	Intracerebral hemorrhage	78.1 (50.8 – 112.4)	-1.4 (-1.5 to -1.2)	-1.1 (-1.3 to -1)	70.6 (47 – 103.8)	-1.6 (-1.8 to -1.5)	-0.8 (-0.9 to -0.7)	84.8 (51.7 – 126.4)	-1.1 (-1.4 to -0.9)	-1.3 (-1.6 to -1.1)
Haiti	Subarachnoid hemorrhage	13.5 (6.1 – 24.6)	-1.2 (-1.3 to -1.2)	-1.1 (-1.2 to -1)	11.5 (3 – 24.2)	-1.2 (-1.3 to -1.1)	-0.8 (-0.9 to -0.7)	15.3 (6.8 – 27.6)	-1.3 (-1.4 to -1.2)	-1.4 (-1.5 to -1.3)

Jamaica	Ischemic heart disease	64.3 (52.5 – 77.3)	-0.7 (-2.1 to 0.7)	0.5 (-1.8 to 3)	73.5 (59.7 – 88.1)	-0.6 (-2.1 to 1)	-0.9 (-3.6 to 1.8)	55.7 (45.1 – 67)	-1 (-2.3 to 0.2)	2 (-0.6 to 4.7)
Jamaica	Stroke	89.9 (73.8 – 108.6)	-0.8 (-2.2 to 0.7)	0.5 (-0.3 to 1.3)	91.4 (74.1 – 111.7)	-0.6 (-2.4 to 1.4)	-1 (-2.1 to 0.1)	87.5 (71.5 – 105.4)	-1 (-2.1 to 0)	1.9 (-0.4 to 4.3)
Jamaica	Ischemic stroke	48.3 (39.1 – 57.6)	-0.7 (-2.2 to 0.8)	0.6 (-1.6 to 2.9)	46.1 (37 – 55.8)	-0.5 (-2.4 to 1.3)	-1 (-2.1 to 0.1)	49.3 (39.7 – 58.7)	-0.9 (-2.2 to 0.4)	2.2 (1.3 to 3.1)
Jamaica	Intracerebral hemorrhage	36.2 (28.8 – 44.3)	-0.7 (-2.3 to 0.9)	0.4 (-0.5 to 1.3)	40.7 (32 – 51.2)	-0.6 (-2.6 to 1.5)	-1 (-2.3 to 0.2)	31.9 (25.8 – 39.4)	-0.9 (-1.9 to 0.1)	2.5 (0.4 to 4.6)
Jamaica	Subarachnoid hemorrhage	5.5 (4.3 – 6.9)	-0.7 (-1.4 to 0.1)	0.4 (-0.6 to 1.4)	4.6 (3.5 – 5.9)	-0.3 (-1.2 to 0.6)	-0.9 (-2.1 to 0.3)	6.4 (4.9 – 8.1)	-0.9 (-1.4 to -0.4)	1.3 (0.1 to 2.5)
Saint Kitts and Nevis	Ischemic heart disease	104.1 (91.8 – 117.3)	-2.9 (-3.2 to -2.7)	-0.5 (-0.8 to -0.2)	128.7 (114.6 – 144.7)	-2.7 (-2.9 to -2.5)	-0.8 (-1.1 to -0.6)	81.2 (69.9 – 93.9)	-3.1 (-3.3 to -2.9)	-0.8 (-1 to -0.6)
Saint Kitts and Nevis	Stroke	126.8 (110 – 144.8)	-2.5 (-2.9 to -2)	-0.6 (-0.9 to -0.4)	130.2 (113.3 – 148)	-2.2 (-2.4 to -2)	-0.9 (-1.1 to -0.7)	117.8 (101.8 – 136.7)	-2.7 (-3.1 to -2.3)	-1 (-1.2 to -0.8)
Saint Kitts and Nevis	Ischemic stroke	75.1 (65.2 – 85.7)	-2.1 (-2.5 to -1.6)	-0.7 (-0.9 to -0.5)	66.8 (58.7 – 75.9)	-2.1 (-2.6 to -1.7)	-1.5 (-2.2 to -0.8)	77.2 (66.1 – 89.2)	-2.1 (-2.6 to -1.6)	-0.6 (-0.9 to -0.4)
Saint Kitts and Nevis	Intracerebral hemorrhage	46.6 (39.1 – 54.4)	-2.9 (-3.6 to -2.2)	-0.3 (-1.5 to 1)	57.9 (48.6 – 67.8)	-2.4 (-2.8 to -2)	0.4 (-0.2 to 0.9)	35.7 (29.7 – 42.6)	-3.7 (-4.2 to -3.3)	-2 (-2.2 to -1.8)
Saint Kitts and Nevis	Subarachnoid hemorrhage	5.2 (4 – 6.4)	-1.6 (-1.9 to -1.4)	-0.3 (-0.7 to 0.1)	5.4 (4.2 – 6.8)	-1.3 (-1.4 to -1.1)	0 (-0.2 to 0.2)	5 (3.8 – 6.4)	-2.1 (-2.4 to -1.8)	-0.8 (-1 to -0.7)
Saint Lucia	Ischemic heart disease	66.6 (57.6 – 76.4)	-2.9 (-3.3 to -2.4)	1.3 (0.8 to 1.7)	83.7 (71.4 – 96.6)	-2.9 (-3.5 to -2.2)	0.5 (-0.7 to 1.8)	51.7 (43.5 – 59.8)	-3.2 (-3.7 to -2.6)	1.9 (1.4 to 2.5)
Saint Lucia	Stroke	85.3 (73.1 – 98.7)	-2.1 (-2.7 to -1.6)	1.6 (1.1 to 2)	94.6 (80.5 – 110.2)	-1.9 (-2.7 to -1.2)	1 (-0.5 to 2.5)	76.3 (64.9 – 88)	-2.4 (-3 to -1.8)	2 (1.5 to 2.6)
Saint Lucia	Ischemic stroke	49.9 (42.4 – 57.6)	-2.1 (-2.8 to -1.4)	1.9 (1.3 to 2.4)	48.1 (40 – 56.5)	-2 (-2.8 to -1.2)	1.1 (-0.6 to 2.8)	50.4 (42.2 – 58.4)	-2.2 (-2.9 to -1.5)	2.3 (1.7 to 2.9)
Saint Lucia	Intracerebral hemorrhage	31 (26.2 – 36.4)	-2.3 (-2.7 to -2)	1 (0 to 2)	42.6 (35.4 – 50.2)	-1.9 (-2.1 to -1.6)	1.3 (0.8 to 1.8)	21.1 (17.7 – 24.9)	-3 (-3.6 to -2.4)	1.5 (1 to 2)
Saint Lucia	Subarachnoid hemorrhage	4.4 (3.6 – 5.2)	-1.4 (-1.8 to -1)	1 (0.8 to 1.3)	3.9 (3.2 – 4.8)	-1.1 (-1.2 to -0.9)	0.4 (0.1 to 0.6)	4.8 (3.9 – 5.8)	-1.6 (-2.1 to -1.1)	1.5 (1.1 to 1.8)
Mexico	Ischemic heart disease	100 (86 – 112.9)	-0.4 (-1.1 to 0.3)	0.6 (0 to 1.3)	118.6 (97.9 – 143)	-0.2 (-0.4 to 0)	1.2 (0.9 to 1.5)	83.8 (69.7 – 98.5)	-0.6 (-1.2 to 0.1)	0.3 (-0.3 to 0.9)
Mexico	Stroke	35.2 (30.4 – 39.9)	-1.8 (-2.3 to -1.4)	-0.9 (-1.3 to -0.4)	37.2 (30.5 – 44.4)	-1.6 (-2 to -1.2)	-0.5 (-1 to -0.1)	33.4 (27.8 – 39.8)	-2.1 (-2.5 to -1.6)	-1.2 (-1.6 to -0.8)
Mexico	Ischemic stroke	19.6 (16.5 – 22.4)	-2.1 (-2.6 to -1.6)	-1.1 (-1.4 to -0.8)	20.3 (16.6 – 24.3)	-2.1 (-2.3 to -1.9)	-0.9 (-1.2 to -0.6)	19 (15.6 – 22.7)	-2.3 (-2.9 to -1.6)	-1.2 (-1.4 to -0.9)
Mexico	Intracerebral hemorrhage	11.7 (10.1 – 13.5)	-1.9 (-2.1 to -1.7)	-1.1 (-1.6 to -0.6)	13.3 (10.8 – 16.1)	-1.4 (-1.6 to -1.2)	-0.5 (-1 to 0)	10.3 (8.5 – 12.4)	-2.4 (-2.6 to -2.2)	-1.7 (-2.2 to -1.3)
Mexico	Subarachnoid hemorrhage	3.8 (3.2 – 4.5)	0.5 (0.3 to 0.6)	0.1 (0 to 0.3)	3.5 (2.6 – 4.4)	0.6 (0.3 to 0.9)	0.2 (-0.4 to 0.8)	4.1 (3.2 – 5)	0.3 (0.1 to 0.5)	-0.1 (-0.2 to 0)
Nicaragua	Ischemic heart disease	148.3 (126.9 – 166.4)	1.4 (0.9 to 1.8)	0.2 (0 to 0.5)	182.4 (152.5 – 212)	0.4 (-0.3 to 1.1)	0.1 (-0.1 to 0.3)	122.5 (105.2 – 135.5)	1.8 (0.9 to 2.7)	-0.1 (-0.2 to 0.1)
Nicaragua	Stroke	54.4 (46.1 – 61.9)	-1.2 (-2.4 to -0.1)	-2.7 (-3 to -2.3)	61.7 (50.3 – 73.2)	-1.6 (-2.3 to -1)	-2 (-3 to -1.1)	48.8 (41.6 – 55.9)	-0.2 (-0.9 to 0.5)	-2.4 (-2.8 to -2)
Nicaragua	Ischemic stroke	31 (26.4 – 35.1)	-0.3 (-0.8 to 0.2)	-1.9 (-2.2 to -1.6)	35.2 (28.7 – 41.7)	-1.2 (-1.8 to -0.6)	-1.5 (-2.5 to -0.6)	27.8 (23.3 – 32.4)	0.2 (-0.6 to 1)	-2.2 (-2.3 to -2)
Nicaragua	Intracerebral hemorrhage	20 (16.7 – 23.4)	-1.9 (-3 to -0.7)	-3.5 (-4 to -3.1)	23.4 (18.4 – 28.5)	-2.1 (-2.9 to -1.4)	-2.8 (-3.9 to -1.7)	17.2 (14.3 – 20.2)	-1.3 (-2 to -0.6)	-3.2 (-3.6 to -2.8)
Nicaragua	Subarachnoid hemorrhage	3.5 (2.7 – 4.2)	-1 (-1.8 to -0.2)	-1 (-1.2 to -0.8)	3.1 (2 – 4.2)	-1.5 (-1.8 to -1.1)	-1 (-1.1 to -0.9)	3.8 (3 – 4.7)	-1 (-1.6 to -0.4)	-1.9 (-2.3 to -1.5)
Panama	Ischemic heart disease	58.2 (45.1 – 72.8)	-2.3 (-2.8 to -1.9)	-2.3 (-2.7 to -2)	72.6 (55.8 – 92.2)	-2 (-2.3 to -1.6)	-2.3 (-2.7 to -1.9)	44.7 (34.2 – 55.5)	-2.7 (-3.3 to -2.2)	-1.9 (-2.2 to -1.6)
Panama	Stroke	42.4 (32.8 – 53)	-1.9 (-2.4 to -1.4)	-1.5 (-1.9 to -1.2)	49.4 (38.4 – 62.2)	-1.5 (-1.9 to -1.2)	-1.6 (-2.2 to -1)	36 (27.6 – 45.4)	-2.2 (-3.1 to -1.3)	-1.5 (-2 to -0.9)
Panama	Ischemic stroke	22.9 (17.2 – 28.7)	-1.6 (-2.3 to -0.9)	-1.1 (-1.5 to -0.8)	25.7 (19.5 – 32.3)	-1.3 (-2 to -0.5)	-1.1 (-1.5 to -0.7)	20.4 (14.7 – 25.9)	-1.8 (-2.3 to -1.4)	-0.8 (-1.4 to -0.3)
Panama	Intracerebral hemorrhage	14.9 (11.3 – 19.1)	-2.6 (-3.3 to -2)	-2.7 (-3.1 to -2.3)	19.4 (14.6 – 25.2)	-2.1 (-2.4 to -1.8)	-2.8 (-2.9 to -2.6)	10.6 (8.1 – 13.6)	-3.2 (-4.1 to -2.2)	-3.1 (-3.8 to -2.3)
Panama	Subarachnoid hemorrhage	4.7 (3.4 – 6.1)	-0.7 (-0.9 to -0.5)	-0.6 (-0.9 to -0.2)	4.3 (2.9 – 5.8)	-0.3 (-0.7 to 0)	-0.6 (-1.2 to 0.1)	5 (3.8 – 6.5)	-1.1 (-1.5 to -0.6)	-0.5 (-0.9 to -0.2)
Peru	Ischemic heart disease	48.7 (35.9 – 62.3)	-2.6 (-3.4 to -1.7)	-2 (-2.7 to -1.3)	58.3 (43.3 – 75.8)	-2.5 (-3.3 to -1.7)	-1.9 (-2.6 to -1.2)	39.9 (28.9 – 51.3)	-2.6 (-3.5 to -1.7)	-2 (-2.8 to -1.3)
Peru	Stroke	26.8 (19.9 – 36.2)	-3 (-3.8 to -2.2)	-3 (-3.6 to -2.3)	29 (21.4 – 40.8)	-3.1 (-3.9 to -2.3)	-2.7 (-3.5 to -2)	24.8 (18.3 – 33.1)	-3 (-3.8 to -2.2)	-3.2 (-3.9 to -2.5)
Peru	Ischemic stroke	14 (10.3 – 18.5)	-2.3 (-3.1 to -1.5)	-2.2 (-2.8 to -1.5)	14.9 (10.9 – 20.6)	-2.4 (-3.3 to -1.6)	-1.7 (-2.8 to -0.5)	13.1 (9.5 – 17.5)	-2.3 (-3.1 to -1.5)	-2.4 (-3 to -1.7)
Peru	Intracerebral hemorrhage	9.7 (7.2 – 13)	-3.7 (-4.6 to -2.8)	-3.6 (-5 to -2.2)	11.1 (7.8 – 15.6)	-4 (-5 to -2.9)	-3.7 (-4.6 to -2.7)	8.4 (6.1 – 11.3)	-3.8 (-4.6 to -3)	-3.8 (-5 to -2.5)
Peru	Subarachnoid hemorrhage	3.2 (2.2 – 4.6)	-2.7 (-3.1 to -2.2)	-3.4 (-4.1 to -2.7)	3 (2 – 4.8)	-2.6 (-3.2 to -1.9)	-2.8 (-3.6 to -2)	3.3 (2.3 – 4.7)	-2.9 (-3.5 to -2.2)	-4.1 (-4.5 to -3.6)
Puerto Rico	Ischemic heart disease	59.6 (46.6 – 73.4)	-3.3 (-3.5 to -3)	-1.7 (-2.4 to -1)	77.1 (59.9 – 96.9)	-3 (-3.3 to -2.8)	-1.7 (-2.6 to -0.8)	45.4 (35.3 – 55.6)	-3.5 (-3.8 to -3.3)	-1.7 (-2.5 to -1)
Puerto Rico	Stroke	22.7 (17.5 – 28.1)	-2.3 (-2.7 to -1.9)	-1.9 (-2.9 to -0.8)	26 (20.2 – 32.5)	-2.1 (-2.5 to -1.8)	-1.9 (-2.8 to -1.1)	20 (15.3 – 24.8)	-2.4 (-2.9 to -1.9)	-1.9 (-3.2 to -0.6)
Puerto Rico	Ischemic stroke	12.1 (9.1 – 15.1)	-2.6 (-3 to -2.2)	-2 (-3 to -1)	12.7 (9.8 – 15.9)	-2.5 (-2.9 to -2.2)	-2.2 (-3 to -1.3)	11.5 (8.5 – 14.4)	-2.7 (-3.2 to -2.2)	-2.3 (-3.5 to -1.1)
Puerto Rico	Intracerebral hemorrhage	8.4 (6.5 – 10.6)	-2 (-2.5 to -1.6)	-1.8 (-3 to -0.7)	11.2 (8.6 – 14.2)	-1.9 (-2.2 to -1.5)	-1.8 (-2.7 to -0.8)	6.2 (4.7 – 7.7)	-2.3 (-2.8 to -1.7)	-2 (-3.4 to -0.6)

Puerto Rico	Subarachnoid hemorrhage	2.2 (1.7 – 2.8)	-1.2 (-1.6 to -0.8)	-1.7 (-2.5 to -0.8)	2 (1.5 – 2.6)	-0.8 (-1.1 to -0.6)	-1.2 (-1.8 to -0.6)	2.3 (1.7 – 3)	-1.4 (-1.9 to -1)	-1.9 (-3 to -0.8)
Paraguay	Ischemic heart disease	89.6 (70.2 – 112.9)	-0.6 (-1 to -0.2)	-0.2 (-0.7 to 0.3)	115.5 (90.7 – 146.4)	-0.2 (-0.6 to 0.2)	0.2 (-0.2 to 0.7)	66.5 (51.4 – 83)	-1 (-1.5 to -0.6)	-0.6 (-1.1 to 0)
Paraguay	Stroke	63.5 (48.5 – 82.5)	-1.5 (-2.2 to -0.8)	-1.3 (-2.1 to -0.6)	72.4 (54.7 – 102.9)	-1.3 (-1.9 to -0.7)	-0.9 (-1.7 to -0.2)	55.7 (42.8 – 70.8)	-1.8 (-2.5 to -1)	-1.8 (-2.7 to -1)
Paraguay	Ischemic stroke	35.7 (27.1 – 46.1)	-1.1 (-1.7 to -0.4)	-0.8 (-1.1 to -0.5)	41.7 (31.1 – 57.4)	-0.9 (-1.7 to -0.2)	-0.6 (-0.9 to -0.2)	30.5 (22.9 – 38.6)	-1.2 (-1.9 to -0.5)	-1.1 (-1.4 to -0.8)
Paraguay	Intracerebral hemorrhage	22.3 (16.9 – 29.5)	-2.3 (-3 to -1.6)	-2.3 (-3.1 to -1.4)	26.2 (19.4 – 37.1)	-1.9 (-2.5 to -1.3)	-2 (-3.1 to -0.8)	18.6 (14 – 24.3)	-2.8 (-3.5 to -2.1)	-2.9 (-3.8 to -2.1)
Paraguay	Subarachnoid hemorrhage	5.6 (4.1 – 7.6)	-0.9 (-1.5 to -0.3)	-2.2 (-2.8 to -1.5)	4.5 (2.9 – 7.3)	-1.1 (-1.6 to -0.5)	-1.9 (-2.5 to -1.3)	6.5 (4.7 – 8.7)	-0.8 (-1.3 to -0.3)	-2.5 (-3.5 to -1.4)
El Salvador	Ischemic heart disease	100.4 (78.1 – 125.9)	-0.7 (-1.3 to -0.1)	0.3 (-0.4 to 1.1)	122.1 (94.6 – 153.6)	-0.5 (-1.7 to 0.8)	0.4 (-0.8 to 1.6)	84.4 (65.6 – 106.9)	-0.9 (-1.1 to -0.7)	-0.1 (-0.3 to 0.2)
El Salvador	Stroke	34.4 (26.1 – 44.7)	-2.5 (-3.2 to -1.8)	0.2 (-1.8 to 2.3)	37.5 (28 – 51.8)	-2.6 (-4 to -1.1)	0.4 (-2.7 to 3.5)	32.1 (24.3 – 41.8)	-2.5 (-3 to -2)	0.3 (-0.2 to 0.8)
El Salvador	Ischemic stroke	16.4 (12.5 – 20.9)	-1.7 (-2.4 to -0.9)	0.7 (-1 to 2.5)	18.1 (13.3 – 24.3)	-1.7 (-2.6 to -0.7)	0.7 (-1.6 to 3)	15.2 (11.3 – 19.6)	-1.6 (-2.4 to -0.7)	1 (0.4 to 1.5)
El Salvador	Intracerebral hemorrhage	14.3 (10.7 – 19.2)	-3.3 (-4.1 to -2.4)	-0.3 (-2.6 to 2.2)	16 (11.8 – 22.2)	-3 (-3.8 to -2.2)	0.4 (-0.8 to 1.6)	13 (9.6 – 17.3)	-3.3 (-3.8 to -2.8)	-0.3 (-0.8 to 0.2)
El Salvador	Subarachnoid hemorrhage	3.7 (2.6 – 5.1)	-2.8 (-3.4 to -2.2)	-0.1 (-1.4 to 1.2)	3.4 (2.3 – 5.7)	-2.9 (-3.7 to -2)	0.1 (-2 to 2.2)	3.9 (2.8 – 5.2)	-2.7 (-3.1 to -2.3)	-0.3 (-0.9 to 0.3)
Suriname	Ischemic heart disease	106.9 (89.9 – 124.6)	-1.7 (-2.4 to -1.1)	1 (0.5 to 1.4)	135.7 (113 – 161.5)	-1.5 (-2.5 to -0.6)	0.6 (-1.4 to 2.6)	82.3 (69.2 – 95.4)	-2.1 (-2.7 to -1.5)	1 (0.5 to 1.4)
Suriname	Stroke	101.8 (85.9 – 119.5)	-0.5 (-1 to 0)	-0.1 (-0.5 to 0.3)	112.7 (94.1 – 134.9)	-0.2 (-1 to 0.7)	0 (-0.6 to 0.7)	91.8 (76.9 – 108.3)	-0.9 (-1.4 to -0.4)	-0.1 (-0.5 to 0.3)
Suriname	Ischemic stroke	47 (39.2 – 55)	-0.4 (-0.9 to 0)	0.1 (-0.9 to 1.2)	47.5 (38.1 – 57.8)	-0.3 (-1.2 to 0.6)	0 (-1.9 to 1.9)	46 (38 – 54.4)	-0.5 (-1.1 to 0.1)	0.3 (-0.2 to 0.7)
Suriname	Intracerebral hemorrhage	49.9 (41.5 – 59.9)	-0.6 (-1.1 to -0.1)	-0.4 (-0.8 to 0)	60 (48.9 – 72.7)	-0.1 (-1.1 to 0.9)	-0.1 (-0.7 to 0.4)	41.1 (34.1 – 49.8)	-1.2 (-1.7 to -0.7)	-0.5 (-0.9 to -0.1)
Suriname	Subarachnoid hemorrhage	4.9 (3.9 – 6.4)	-0.7 (-1 to -0.3)	-0.3 (-0.5 to -0.1)	5.2 (3.8 – 7.1)	-0.4 (-0.8 to -0.1)	-0.4 (-0.6 to -0.2)	4.8 (3.7 – 6)	-0.9 (-1.3 to -0.5)	-0.4 (-1.1 to 0.2)
Trinidad and Tobago	Ischemic heart disease	120.1 (93.5 – 152.1)	-2.2 (-2.5 to -1.9)	-0.6 (-1.2 to 0)	144.5 (110.5 – 184.9)	-2.1 (-2.5 to -1.8)	-0.6 (-1.3 to 0.1)	97.4 (76.3 – 122.2)	-2.3 (-2.6 to -2)	-0.5 (-1 to 0.1)
Trinidad and Tobago	Stroke	67.9 (52.6 – 87.1)	-2.2 (-2.5 to -2)	-0.3 (-0.8 to 0.2)	74.6 (57.5 – 96.3)	-2.1 (-2.5 to -1.8)	-0.3 (-1 to 0.4)	61.5 (46.8 – 78)	-2.4 (-2.8 to -2)	-0.4 (-0.9 to 0.1)
Trinidad and Tobago	Ischemic stroke	42.2 (32.5 – 53.3)	-2.1 (-2.4 to -1.8)	-0.2 (-0.7 to 0.4)	46.4 (35.4 – 59.4)	-2.2 (-2.5 to -1.8)	-0.1 (-0.9 to 0.6)	38.3 (29.4 – 48.4)	-2.1 (-2.4 to -1.8)	-0.1 (-0.6 to 0.4)
Trinidad and Tobago	Intracerebral hemorrhage	20.9 (15.6 – 27.5)	-2.6 (-2.9 to -2.3)	-0.6 (-1.2 to 0)	23.5 (17.3 – 31.4)	-2.1 (-2.5 to -1.7)	-0.5 (-1.3 to 0.3)	18.3 (13.7 – 23.9)	-3 (-3.4 to -2.6)	-0.7 (-1.2 to -0.2)
Trinidad and Tobago	Subarachnoid hemorrhage	4.8 (3.6 – 6.4)	-0.9 (-1.1 to -0.8)	-0.3 (-0.7 to 0)	4.7 (3.4 – 6.4)	-0.8 (-0.9 to -0.7)	-0.5 (-0.6 to -0.5)	5 (3.6 – 6.6)	-1 (-1.2 to -0.8)	-0.2 (-0.6 to 0.2)
Uruguay	Ischemic heart disease	67 (60.9 – 71.3)	-2.9 (-3 to -2.7)	-1.6 (-2 to -1.2)	93.3 (86.6 – 98.6)	-2.6 (-2.8 to -2.5)	-1.5 (-2 to -1)	47.3 (41.6 – 51.5)	-3 (-3.2 to -2.9)	-1.5 (-2 to -0.9)
Uruguay	Stroke	56.3 (50.1 – 61.3)	-2 (-2.3 to -1.7)	-2.1 (-2.8 to -1.4)	60 (54.3 – 65.8)	-2 (-2.3 to -1.7)	-2.2 (-3 to -1.5)	52.5 (45.6 – 57.3)	-2 (-2.3 to -1.6)	-2.1 (-2.8 to -1.3)
Uruguay	Ischemic stroke	35.6 (30.8 – 39.2)	-2.3 (-2.8 to -1.9)	-1.9 (-2.7 to -1.2)	37.4 (33.3 – 41.5)	-2.3 (-2.7 to -1.9)	-2.1 (-2.8 to -1.4)	33.6 (28.2 – 37.3)	-2.4 (-2.9 to -2)	-1.7 (-2.3 to -1.1)
Uruguay	Intracerebral hemorrhage	14 (12.6 – 15.3)	-1.5 (-2.3 to -0.8)	-2.9 (-4.2 to -1.6)	16.7 (14.8 – 18.8)	-1.6 (-2.3 to -0.8)	-2.8 (-4.1 to -1.5)	11.7 (10.5 – 12.8)	-1.6 (-2.3 to -0.9)	-2.9 (-4.2 to -1.7)
Uruguay	Subarachnoid hemorrhage	6.7 (6 – 7.4)	-0.9 (-1.3 to -0.5)	-1.5 (-2.4 to -0.7)	6 (5.2 – 6.8)	-1.2 (-1.6 to -0.9)	-1.4 (-2.1 to -0.7)	7.2 (6.4 – 8)	-0.8 (-1.1 to -0.5)	-2.3 (-2.6 to -1.9)
United States of America	Ischemic heart disease	91 (82.4 – 96.5)	-2.3 (-2.5 to -2.2)	-0.7 (-1.1 to -0.3)	120.6 (111.9 – 126.8)	-2.4 (-2.5 to -2.2)	-0.5 (-0.9 to 0)	66.8 (58 – 73.4)	-2.4 (-2.6 to -2.2)	-1.1 (-1.5 to -0.6)
United States of America	Stroke	30.8 (27.3 – 33.2)	-1.3 (-1.5 to -1.2)	-0.2 (-0.4 to 0)	31.5 (28.7 – 33.8)	-1.5 (-1.7 to -1.3)	0 (-0.5 to 0.6)	29.7 (25.7 – 32.6)	-1.3 (-1.5 to -1.1)	-0.2 (-0.4 to -0.1)
United States of America	Ischemic stroke	16.6 (14.2 – 18.2)	-2 (-2.1 to -1.9)	-0.3 (-0.5 to 0)	15.5 (13.8 – 17.2)	-2.3 (-2.7 to -2)	-0.1 (-0.7 to 0.4)	17 (14.2 – 18.9)	-1.8 (-2.1 to -1.6)	-0.3 (-0.5 to 0)
United States of America	Intracerebral hemorrhage	10.3 (9.5 – 11.2)	-0.4 (-0.6 to -0.3)	-0.1 (-0.4 to 0.1)	11.9 (11 – 13)	-0.6 (-0.7 to -0.4)	-0.1 (-0.3 to 0.1)	9 (8.1 – 9.9)	-0.3 (-0.5 to -0.2)	-0.3 (-0.5 to 0)
United States of America	Subarachnoid hemorrhage	3.8 (3.5 – 4)	-0.1 (-0.3 to 0)	0.2 (0.1 to 0.3)	4.1 (3.2 – 4.4)	0.6 (0.4 to 0.8)	0.5 (0.4 to 0.7)	3.7 (3.4 – 4)	-0.6 (-0.8 to -0.5)	0 (-0.1 to 0.1)
Saint Vincent and the Grenadines	Ischemic heart disease	132.3 (118.3 – 147.2)	-1.3 (-1.5 to -1.1)	-0.2 (-0.6 to 0.1)	140.1 (124.3 – 156.3)	-1.4 (-1.7 to -1.1)	0 (-0.6 to 0.5)	123 (109 – 138.2)	-1.3 (-1.7 to -0.9)	-0.5 (-0.9 to -0.2)
Saint Vincent and the Grenadines	Stroke	87.9 (77.3 – 98.7)	-1 (-1.3 to -0.7)	-0.2 (-0.6 to 0.2)	87 (75.8 – 98.3)	-0.9 (-1.2 to -0.5)	0.2 (-0.3 to 0.7)	87.9 (76.2 – 98.9)	-1.2 (-1.6 to -0.7)	-0.5 (-0.9 to -0.2)
Saint Vincent and the Grenadines	Ischemic stroke	49.4 (43.1 – 55.7)	-1.8 (-2.1 to -1.4)	-0.4 (-0.7 to -0.1)	41.8 (35.7 – 47.9)	-2 (-2.3 to -1.6)	-0.1 (-0.6 to 0.3)	56.1 (48.5 – 63.2)	-1.6 (-2.1 to -1.1)	-0.5 (-0.8 to -0.2)
Saint Vincent and the Grenadines	Intracerebral hemorrhage	35 (30.2 – 39.8)	0.4 (0.1 to 0.7)	0 (-0.4 to 0.4)	42.2 (36 – 48.6)	0.8 (0.2 to 1.3)	0.3 (-0.9 to 1.6)	27.7 (23.9 – 31.6)	-0.2 (-0.5 to 0.2)	-0.6 (-1 to -0.3)
Saint Vincent and the Grenadines	Subarachnoid hemorrhage	3.5 (3 – 4.1)	-1.6 (-1.8 to -1.5)	0.1 (-0.1 to 0.3)	3 (2.5 – 3.6)	-1.9 (-2.1 to -1.8)	-0.1 (-0.4 to 0.1)	4.1 (3.4 – 4.8)	-1.3 (-1.5 to -1.2)	0.2 (-0.1 to 0.5)
Venezuela (Bolivarian Republic of)	Ischemic heart disease	130 (102.6 – 164.9)	-1 (-1.6 to -0.5)	-0.2 (-1.1 to 0.7)	170.9 (131.5 – 217.4)	-0.7 (-1.7 to 0.3)	-1 (-2.3 to 0.3)	94.9 (74.7 – 120)	-1.4 (-1.8 to -1.1)	0.9 (0.2 to 1.7)
Venezuela (Bolivarian Republic of)	Stroke	57 (44.8 – 72.4)	-1.1 (-1.7 to -0.4)	0.1 (-0.9 to 1)	65.5 (50.5 – 83.4)	-0.6 (-1.6 to 0.4)	-0.5 (-1.8 to 0.8)	49.6 (38.9 – 63)	-1.4 (-1.6 to -1.2)	1.4 (0.8 to 2)

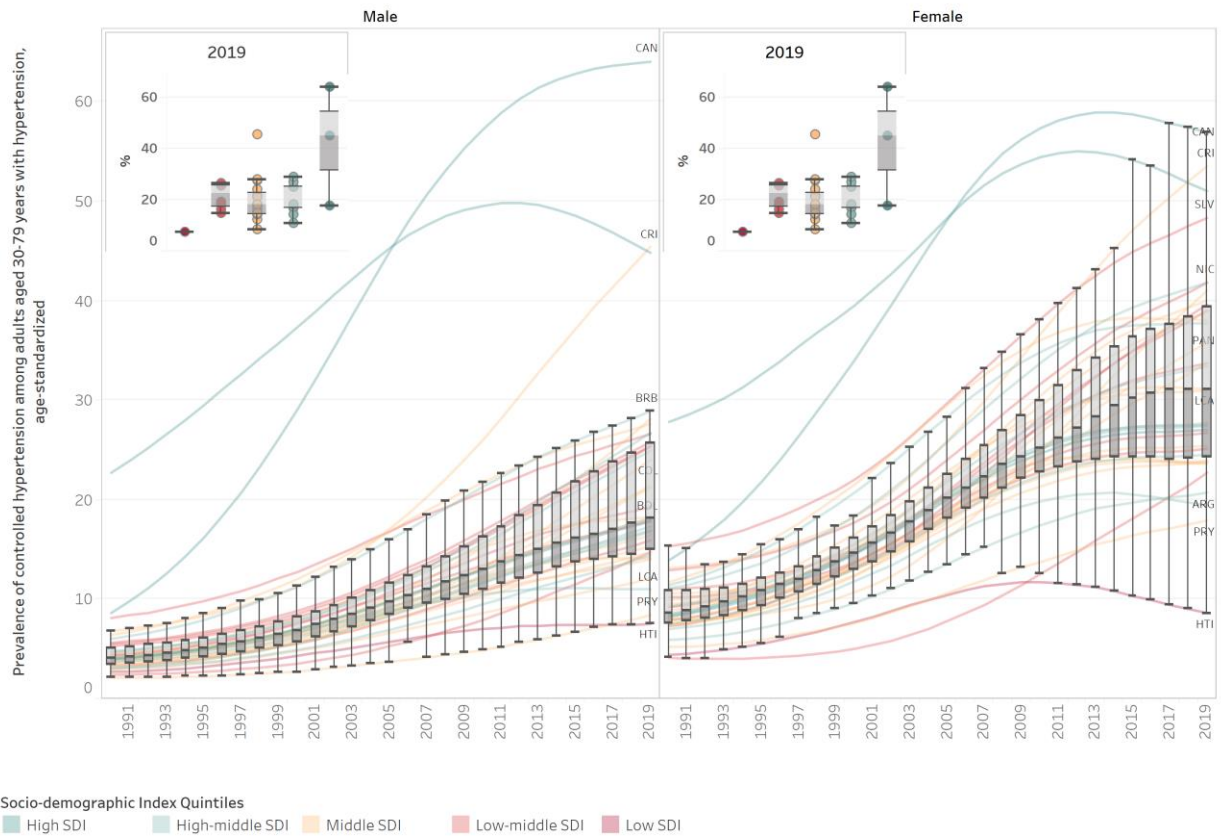
Venezuela (Bolivarian Republic of)	Ischemic stroke	25.5 (19.5 – 32.2)	-0.9 (-1.5 to -0.2)	0.3 (-0.4 to 1.1)	28.3 (21.6 – 36.4)	-0.5 (-1.6 to 0.6)	-0.5 (-1.9 to 1)	23 (17.4 – 29)	-1.2 (-1.5 to -0.9)	1 (0.6 to 1.5)
Venezuela (Bolivarian Republic of)	Intracerebral hemorrhage	26.3 (20.2 – 33.9)	-1.3 (-1.8 to -0.9)	0.1 (-1 to 1.2)	32.6 (24.5 – 42.3)	-0.8 (-1.8 to 0.3)	-0.7 (-2 to 0.6)	20.8 (16.1 – 27.1)	-1.8 (-2.1 to -1.4)	1.1 (0.4 to 1.9)
Venezuela (Bolivarian Republic of)	Subarachnoid hemorrhage	5.3 (3.9 – 6.9)	-0.7 (-0.9 to -0.5)	0.3 (-0.1 to 0.7)	4.7 (3.4 – 6.2)	-0.4 (-0.9 to 0.1)	-0.3 (-1.1 to 0.6)	5.8 (4.2 – 7.7)	-0.8 (-1.3 to -0.4)	0.7 (-0.4 to 1.9)
United States Virgin Islands	Ischemic heart disease	174.5 (155.3 – 192.7)	-0.5 (-0.8 to -0.2)	-0.7 (-0.9 to -0.5)	233.7 (207.5 – 259.8)	0.1 (-0.3 to 0.6)	-0.3 (-0.6 to 0)	127.3 (109.8 – 142.8)	-1.2 (-1.4 to -1.1)	-0.8 (-1 to -0.6)
United States Virgin Islands	Stroke	56.6 (49 – 63.8)	-0.5 (-0.8 to -0.3)	-0.5 (-0.7 to -0.4)	70 (59.5 – 80.6)	0.1 (-0.3 to 0.5)	-0.2 (-0.4 to 0.1)	45.5 (38 – 52.2)	-1.2 (-1.3 to -1.1)	-0.7 (-0.9 to -0.6)
United States Virgin Islands	Ischemic stroke	30.5 (26.3 – 34.2)	-0.3 (-0.6 to 0)	-0.4 (-0.6 to -0.2)	33.6 (28 – 39.1)	0.3 (-0.2 to 0.8)	-0.2 (-0.5 to 0.2)	27.6 (23.1 – 31.9)	-0.8 (-0.9 to -0.7)	-0.6 (-0.8 to -0.5)
United States Virgin Islands	Intracerebral hemorrhage	21.9 (18.7 – 25.4)	-0.7 (-1.1 to -0.4)	-0.6 (-0.9 to -0.4)	31.7 (26.7 – 37.5)	0 (-0.3 to 0.4)	-0.2 (-0.4 to 0)	14 (11.4 – 16.7)	-1.8 (-1.9 to -1.6)	-1 (-1.2 to -0.7)
United States Virgin Islands	Subarachnoid hemorrhage	4.3 (3.5 – 5.3)	-1.3 (-1.5 to -1)	-0.6 (-0.8 to -0.4)	4.6 (3.6 – 6.1)	-0.5 (-0.7 to -0.3)	-0.3 (-0.4 to -0.1)	4 (3.2 – 5)	-1.9 (-2 to -1.7)	-1 (-1.3 to -0.7)

Figure S3. Average annual percent change of the age-standardized prevalence of hypertension control in the population from 1990 to 2019 by sex and country.



Each dot represents the point estimates of the average annual percent change (AAPC) and lines represent their 95% confidence intervals. AAPC is a summary measure of trends over time, where $AAPC < 0$ equates to decreasing trends, $AAPC = 0$ equates constant trends, and $AAPC > 0$ equates increasing trends.

Figure S4. Time trends in the age-standardized prevalence of controlled hypertension among adults aged 30-79 years in the population by sex and quintile of the socio-demographic index, countries of the Americas, 1990-2019.



The age-standardized prevalence of controlled hypertension for each country is represented in lines. Small box-plot at the top-left of each panel represent the distribution of country's controlled hypertension by quintile of the socio-demographic index (SDI) in 2019. Countries are color-coded by quintile of the SDI. Box-plots per year are overlaid to inform on the central trends and distribution of countries over time.

Table S2. Level and trends of the prevalence of the hypertension, previously diagnosis (awareness), treatment, and controlled hypertension among adults aged 30-79 years by sex in 2019 and average annual percentage change from 1990 to 2019 in the Region of the Americas and countries of the region.

Location	Indicator	Prevalence (95% credible intervals)					
		Both sexes		Male		Female	
		2019	AAPC 1990-2019	2019	AAPC 1990-2019	2019	AAPC 1990-2019
Region of the Americas	Prevalence of hypertension among adults aged 30-79 years, age-standardized	35.4 (33.3 – 37.6)	0.3 (0.2 to 0.3)	37.6 (34.4 – 40.9)	0.3 (0.3 to 0.3)	33.3 (30.4 – 36.3)	0.2 (0.2 to 0.2)
Region of the Americas	Prevalence of previous diagnosis of hypertension among adults aged 30-79 with hypertension, age-standardized	69.8 (66.9 – 72.6)	0.7 (0.7 to 0.8)	64.8 (60.5 – 68.8)	0.9 (0.9 to 0.9)	75.3 (71 – 79.1)	0.6 (0.6 to 0.6)
Region of the Americas	Prevalence of treatment (taking medicine) for hypertension among adults aged 30-79 with hypertension, age-standardized	60.3 (57 – 63.6)	1.4 (1.4 to 1.5)	54.4 (49.7 – 58.9)	1.7 (1.6 to 1.7)	66.7 (61.7 – 71.3)	1.3 (1.3 to 1.3)
Region of the Americas	Prevalence of controlled hypertension among adults aged 30-79 years with hypertension, age-standardized	36.4 (32.1 – 40.6)	3.2 (3.1 to 3.2)	32.3 (26.9 – 37.9)	3.3 (3.3 to 3.4)	40.9 (34.5 – 47.2)	3.1 (3 to 3.2)
Argentina	Prevalence of hypertension among adults aged 30-79 years, age-standardized	47.5 (41.6 – 53.3)	0.8 (0.8 to 0.9)	54 (45.1 – 62.9)	1 (1 to 1)	41.2 (33.7 – 49.3)	0.6 (0.6 to 0.6)
Argentina	Prevalence of previous diagnosis of hypertension among adults aged 30-79 with hypertension, age-standardized	58.1 (49.6 – 66.1)	1.2 (1.2 to 1.2)	52.5 (41 – 63.6)	1.4 (1.4 to 1.4)	65.1 (52.9 – 76.1)	1.1 (1.1 to 1.1)
Argentina	Prevalence of treatment (taking medicine) for hypertension among adults aged 30-79 with hypertension, age-standardized	41 (32.9 – 49.4)	2 (1.9 to 2.1)	35.3 (24.9 – 46.4)	2.1 (2 to 2.2)	48.1 (35 – 60.5)	2 (1.9 to 2.1)
Argentina	Prevalence of controlled hypertension among adults aged 30-79 years with hypertension, age-standardized	14.8 (9.3 – 21.7)	3.5 (3.3 to 3.7)	11 (5.4 – 18.7)	3.4 (3.2 to 3.6)	19.4 (10.1 – 31.6)	3.6 (3.4 to 3.7)
Antigua and Barbuda	Prevalence of hypertension among adults aged 30-79 years, age-standardized	42.6 (31.8 – 54.2)	0.5 (0.5 to 0.5)	41.9 (25.9 – 58.6)	0.5 (0.4 to 0.5)	43.2 (28 – 59.2)	0.5 (0.5 to 0.6)
Antigua and Barbuda	Prevalence of previous diagnosis of hypertension among adults aged 30-79 with hypertension, age-standardized	63.3 (47.1 – 78.2)	1.2 (1.1 to 1.2)	53.3 (29.7 – 76.3)	1.5 (1.5 to 1.5)	71.8 (47 – 89.7)	0.9 (0.9 to 0.9)
Antigua and Barbuda	Prevalence of treatment (taking medicine) for hypertension among adults aged 30-79 with hypertension, age-standardized	49.5 (30.1 – 68.2)	2.3 (2.2 to 2.3)	39.7 (16 – 66.6)	2.7 (2.6 to 2.7)	57.7 (27.7 – 83.1)	2 (2 to 2.1)
Antigua and Barbuda	Prevalence of controlled hypertension among adults aged 30-79 years with hypertension, age-standardized	23.2 (9.1 – 42)	4.6 (4.5 to 4.7)	18.1 (3.5 – 42.9)	5.4 (5.3 to 5.5)	27.4 (6.4 – 58.3)	4.2 (4.1 to 4.3)
Bahamas	Prevalence of hypertension among adults aged 30-79 years, age-standardized	44.5 (35.7 – 53.8)	0.6 (0.6 to 0.6)	45.5 (32.7 – 58.6)	0.5 (0.5 to 0.6)	43.6 (31 – 57.2)	0.6 (0.6 to 0.6)
Bahamas	Prevalence of previous diagnosis of hypertension among adults aged 30-79 with hypertension, age-standardized	65.6 (53.2 – 76.3)	1.1 (1.1 to 1.1)	57.2 (40.3 – 73.6)	1.5 (1.5 to 1.5)	73.3 (55.7 – 87.3)	0.9 (0.8 to 0.9)
Bahamas	Prevalence of treatment (taking medicine) for hypertension among adults aged 30-79 with hypertension, age-standardized	53 (39 – 65.8)	2.2 (2.1 to 2.3)	42.3 (24.8 – 60.4)	2.7 (2.7 to 2.8)	62.9 (42.4 – 80)	1.9 (1.9 to 1.9)
Bahamas	Prevalence of controlled hypertension among adults aged 30-79 years with hypertension, age-standardized	22.4 (11.2 – 36.7)	4.5 (4.4 to 4.6)	16.9 (5.1 – 34.7)	5.2 (5 to 5.4)	27.5 (9.7 – 50.4)	4.1 (4 to 4.3)
Belize	Prevalence of hypertension among adults aged 30-79 years, age-standardized	38 (28.1 – 49)	0.6 (0.5 to 0.6)	38 (24.1 – 53.7)	0.5 (0.5 to 0.5)	38 (24.5 – 53.2)	0.6 (0.6 to 0.6)
Belize	Prevalence of previous diagnosis of hypertension among adults aged 30-79 with hypertension, age-standardized	59.6 (46 – 72.4)	1.3 (1.3 to 1.3)	47.1 (28.3 – 66.9)	1.8 (1.8 to 1.8)	71.7 (50.8 – 88)	1 (0.9 to 1)
Belize	Prevalence of treatment (taking medicine) for hypertension among adults aged 30-79 with hypertension, age-standardized	45.2 (29.8 – 60.9)	2.5 (2.5 to 2.6)	34 (16.2 – 55.5)	3.1 (3 to 3.2)	56.1 (31.6 – 78.1)	2.2 (2.1 to 2.3)
Belize	Prevalence of controlled hypertension among adults aged 30-79 years with hypertension, age-standardized	21.4 (8.8 – 38)	4.8 (4.7 to 5)	15.9 (3.4 – 35.3)	5.6 (5.4 to 5.8)	26.7 (7.2 – 54.7)	4.3 (4.1 to 4.4)
Bolivia (Plurinational State of)	Prevalence of hypertension among adults aged 30-79 years, age-standardized	28.3 (18.4 – 39.9)	0.4 (0.3 to 0.4)	29.4 (15.3 – 47.1)	0.6 (0.5 to 0.6)	27.2 (14.8 – 42.6)	0.2 (0.2 to 0.2)
Bolivia (Plurinational State of)	Prevalence of previous diagnosis of hypertension among adults aged 30-79 with hypertension, age-standardized	60.6 (43.6 – 76.1)	1.1 (1.1 to 1.2)	51 (26.9 – 75)	1.5 (1.5 to 1.5)	70.7 (45.9 – 88.9)	1 (0.9 to 1)
Bolivia (Plurinational State of)	Prevalence of treatment (taking medicine) for hypertension among adults aged 30-79 with hypertension, age-standardized	49.3 (30.2 – 68.5)	2.4 (2.4 to 2.4)	39.3 (15.6 – 67.2)	2.8 (2.7 to 2.8)	59.8 (29.1 – 86.2)	2.3 (2.2 to 2.3)
Bolivia (Plurinational State of)	Prevalence of controlled hypertension among adults aged 30-79 years with hypertension, age-standardized	26.3 (10.5 – 46.2)	4.8 (4.6 to 4.9)	19.3 (3.9 – 45.2)	5.3 (5.2 to 5.5)	33.7 (9 – 66.9)	4.6 (4.5 to 4.7)
Brazil	Prevalence of hypertension among adults aged 30-79 years, age-standardized	45 (39.9 – 50.2)	0.5 (0.4 to 0.5)	47.9 (40.2 – 55.6)	0.5 (0.5 to 0.6)	42.1 (35.1 – 48.9)	0.4 (0.4 to 0.4)
Brazil	Prevalence of previous diagnosis of hypertension among adults aged 30-79 with hypertension, age-standardized	67.4 (60.7 – 73.6)	1.3 (1.3 to 1.4)	61.8 (52.4 – 70.8)	1.8 (1.8 to 1.8)	73.4 (64 – 81.3)	1 (1 to 1)
Brazil	Prevalence of treatment (taking medicine) for hypertension among adults aged 30-79 with hypertension, age-standardized	61.9 (55.2 – 68.4)	2.6 (2.6 to 2.7)	54.4 (44.9 – 63.8)	3.4 (3.3 to 3.4)	69.8 (60.3 – 78.4)	2.2 (2.1 to 2.2)

Brazil	Prevalence of controlled hypertension among adults aged 30-79 years with hypertension, age-standardized	33.3 (25.2 – 41.8)	5.9 (5.8 to 6.1)	28.1 (18.5 – 39.2)	7 (6.9 to 7.2)	38.9 (26.4 – 52.1)	5.3 (5.2 to 5.4)
Barbados	Prevalence of hypertension among adults aged 30-79 years, age-standardized	41.8 (33.5 – 50.7)	0.4 (0.4 to 0.5)	40 (28.7 – 52.7)	0.4 (0.3 to 0.4)	43.3 (31.9 – 56.1)	0.5 (0.5 to 0.6)
Barbados	Prevalence of previous diagnosis of hypertension among adults aged 30-79 with hypertension, age-standardized	70.6 (59.3 – 80.6)	1 (1 to 1)	61.7 (44.5 – 77.3)	1.5 (1.5 to 1.5)	78 (61.7 – 90)	0.8 (0.8 to 0.8)
Barbados	Prevalence of treatment (taking medicine) for hypertension among adults aged 30-79 with hypertension, age-standardized	60.5 (46.4 – 72.7)	2.1 (2 to 2.1)	51 (33 – 69.3)	2.7 (2.6 to 2.7)	68.3 (48.1 – 84.5)	1.8 (1.8 to 1.8)
Barbados	Prevalence of controlled hypertension among adults aged 30-79 years with hypertension, age-standardized	33.7 (18.9 – 50.3)	4.7 (4.6 to 4.7)	28.9 (11.6 – 50.9)	5.6 (5.5 to 5.7)	37.7 (16 – 63.1)	4.2 (4.1 to 4.3)
Canada	Prevalence of hypertension among adults aged 30-79 years, age-standardized	22.1 (19.1 – 25.3)	-1.4 (-1.4 to -1.3)	24.3 (20 – 29)	-1.4 (-1.4 to -1.4)	19.9 (16 – 24.4)	-1.3 (-1.4 to -1.3)
Canada	Prevalence of previous diagnosis of hypertension among adults aged 30-79 with hypertension, age-standardized	77.8 (72.5 – 82.6)	1.2 (1.2 to 1.2)	80.1 (73.1 – 86.2)	1.5 (1.5 to 1.6)	75.1 (66.4 – 82.6)	0.8 (0.8 to 0.9)
Canada	Prevalence of treatment (taking medicine) for hypertension among adults aged 30-79 with hypertension, age-standardized	73.3 (67.3 – 78.8)	2.6 (2.5 to 2.7)	75.8 (67.8 – 82.4)	3.3 (3.2 to 3.4)	70.6 (60.5 – 79.2)	1.9 (1.8 to 2)
Canada	Prevalence of controlled hypertension among adults aged 30-79 years with hypertension, age-standardized	60.7 (52.8 – 68)	6.1 (6 to 6.2)	64 (53.6 – 73.8)	7.2 (7 to 7.3)	56.9 (44.5 – 68.3)	5 (4.8 to 5.3)
Chile	Prevalence of hypertension among adults aged 30-79 years, age-standardized	36.1 (29.9 – 42.2)	-0.1 (-0.1 to 0)	39 (29.8 – 48.2)	0 (-0.1 to 0)	33.1 (25.3 – 41.5)	-0.1 (-0.1 to 0)
Chile	Prevalence of previous diagnosis of hypertension among adults aged 30-79 with hypertension, age-standardized	71.2 (62.6 – 78.9)	1 (1 to 1.1)	63.7 (51.3 – 75.4)	1.4 (1.4 to 1.4)	79.7 (67.7 – 88.8)	0.8 (0.8 to 0.8)
Chile	Prevalence of treatment (taking medicine) for hypertension among adults aged 30-79 with hypertension, age-standardized	58.5 (48.9 – 67.6)	2.3 (2.3 to 2.3)	49.9 (36.8 – 62.8)	3.1 (3 to 3.1)	68.2 (54.1 – 81)	1.9 (1.8 to 1.9)
Chile	Prevalence of controlled hypertension among adults aged 30-79 years with hypertension, age-standardized	33.7 (22.8 – 45.5)	5.2 (5.1 to 5.2)	26.7 (14.4 – 42.6)	6.1 (6 to 6.3)	41.8 (24.3 – 60.9)	4.7 (4.6 to 4.8)
Colombia	Prevalence of hypertension among adults aged 30-79 years, age-standardized	31 (24.4 – 38.3)	0.2 (0.2 to 0.2)	31.1 (21.4 – 41.9)	0.2 (0.2 to 0.3)	30.8 (21.8 – 40.6)	0.2 (0.2 to 0.2)
Colombia	Prevalence of previous diagnosis of hypertension among adults aged 30-79 with hypertension, age-standardized	68.7 (58.8 – 77.3)	1.3 (1.2 to 1.3)	60.3 (46.3 – 73.4)	1.8 (1.8 to 1.8)	76.3 (62.4 – 87.4)	0.9 (0.9 to 1)
Colombia	Prevalence of treatment (taking medicine) for hypertension among adults aged 30-79 with hypertension, age-standardized	55.3 (44 – 66.4)	2.9 (2.9 to 3)	45.6 (30.9 – 61.6)	3.7 (3.6 to 3.7)	63.9 (46.6 – 79.3)	2.5 (2.4 to 2.6)
Colombia	Prevalence of controlled hypertension among adults aged 30-79 years with hypertension, age-standardized	33 (19.8 – 47.7)	6.1 (5.9 to 6.3)	24 (9.9 – 43.1)	6.7 (6.5 to 6.8)	41 (20.5 – 64)	5.8 (5.7 to 5.9)
Costa Rica	Prevalence of hypertension among adults aged 30-79 years, age-standardized	37.8 (31 – 44.6)	0.4 (0.4 to 0.4)	36 (26.9 – 45.6)	0.4 (0.4 to 0.5)	39.4 (29.6 – 48.9)	0.4 (0.4 to 0.4)
Costa Rica	Prevalence of previous diagnosis of hypertension among adults aged 30-79 with hypertension, age-standardized	77 (69.3 – 84)	1.1 (1 to 1.1)	71.8 (60.2 – 82.6)	1.6 (1.6 to 1.6)	81.7 (71.7 – 90.2)	0.7 (0.7 to 0.8)
Costa Rica	Prevalence of treatment (taking medicine) for hypertension among adults aged 30-79 with hypertension, age-standardized	70.2 (61.5 – 78.2)	2.7 (2.6 to 2.7)	63.5 (50.7 – 75.7)	3.5 (3.5 to 3.5)	76.1 (63.8 – 86.2)	2.2 (2.1 to 2.2)
Costa Rica	Prevalence of controlled hypertension among adults aged 30-79 years with hypertension, age-standardized	49.7 (36.7 – 62.8)	5.6 (5.5 to 5.7)	45.4 (28.3 – 63.2)	6.8 (6.6 to 6.9)	53.5 (34.4 – 72.9)	5 (4.9 to 5.1)
Cuba	Prevalence of hypertension among adults aged 30-79 years, age-standardized	39.9 (30.9 – 49.4)	0.5 (0.4 to 0.5)	40.3 (27.6 – 53.9)	0.5 (0.4 to 0.5)	39.5 (27.5 – 52.8)	0.5 (0.4 to 0.5)
Cuba	Prevalence of previous diagnosis of hypertension among adults aged 30-79 with hypertension, age-standardized	70.1 (58.6 – 80.2)	1.1 (1.1 to 1.1)	63.3 (45.6 – 78.5)	1.5 (1.4 to 1.5)	76.9 (59.9 – 89.4)	0.9 (0.9 to 0.9)
Cuba	Prevalence of treatment (taking medicine) for hypertension among adults aged 30-79 with hypertension, age-standardized	60.6 (46.7 – 73.1)	2.2 (2.1 to 2.2)	52.5 (33 – 71.3)	2.6 (2.5 to 2.7)	68.6 (47.9 – 84.6)	1.9 (1.8 to 1.9)
Cuba	Prevalence of controlled hypertension among adults aged 30-79 years with hypertension, age-standardized	32.8 (18.2 – 49.9)	4.5 (4.4 to 4.7)	27.6 (10.4 – 50.5)	5.2 (5.1 to 5.3)	38 (15.3 – 64)	4.1 (4 to 4.3)
Dominica	Prevalence of hypertension among adults aged 30-79 years, age-standardized	47.7 (37.6 – 58.1)	0.5 (0.5 to 0.5)	45.5 (31.1 – 60.3)	0.5 (0.4 to 0.5)	49.9 (35.4 – 64.9)	0.6 (0.5 to 0.6)
Dominica	Prevalence of previous diagnosis of hypertension among adults aged 30-79 with hypertension, age-standardized	57.7 (43.6 – 70.5)	1.2 (1.2 to 1.2)	47.7 (29 – 67.1)	1.7 (1.6 to 1.7)	67.1 (45.9 – 84.9)	1 (1 to 1)
Dominica	Prevalence of treatment (taking medicine) for hypertension among adults aged 30-79 with hypertension, age-standardized	45.6 (30.5 – 60.6)	2.3 (2.3 to 2.4)	36.2 (17.8 – 57.2)	2.9 (2.8 to 2.9)	54.5 (31.1 – 76.1)	2.2 (2.1 to 2.2)
Dominica	Prevalence of controlled hypertension among adults aged 30-79 years with hypertension, age-standardized	17.6 (6.8 – 32.6)	4.8 (4.7 to 5)	14.4 (3.2 – 33.6)	5.6 (5.4 to 5.7)	20.7 (5 – 46)	4.4 (4.3 to 4.6)
Dominican Republic	Prevalence of hypertension among adults aged 30-79 years, age-standardized	49.1 (39.8 – 58.7)	0.6 (0.6 to 0.6)	49 (35.5 – 62.2)	0.6 (0.6 to 0.6)	49.2 (36.5 – 62.4)	0.5 (0.5 to 0.5)
Dominican Republic	Prevalence of previous diagnosis of hypertension among adults aged 30-79 with hypertension, age-standardized	67.7 (56.5 – 77.9)	1 (1 to 1)	60.6 (43.8 – 75.9)	1.2 (1.2 to 1.3)	74.5 (58.4 – 86.8)	0.8 (0.8 to 0.8)
Dominican Republic	Prevalence of treatment (taking medicine) for hypertension among adults aged 30-79 with hypertension, age-standardized	53.4 (40 – 66.5)	2.2 (2.2 to 2.3)	46.4 (28.2 – 64.7)	2.5 (2.5 to 2.6)	60.1 (40.3 – 78)	2 (2 to 2.1)

Dominican Republic	Prevalence of controlled hypertension among adults aged 30-79 years with hypertension, age-standardized	21.6 (10.2 – 36.4)	4.7 (4.6 to 4.8)	17.9 (5.5 – 36.5)	5 (4.8 to 5.1)	25.1 (8 – 48.9)	4.4 (4.3 to 4.5)
Ecuador	Prevalence of hypertension among adults aged 30-79 years, age-standardized	27.2 (22.4 – 32.3)	0.5 (0.5 to 0.5)	29.2 (22 – 37.2)	0.9 (0.8 to 0.9)	25.1 (18.9 – 32.1)	0.1 (0.1 to 0.1)
Ecuador	Prevalence of previous diagnosis of hypertension among adults aged 30-79 with hypertension, age-standardized	61.9 (53.8 – 69.7)	1 (1 to 1)	50.7 (39 – 61.8)	1.4 (1.4 to 1.5)	74.5 (62.4 – 84.3)	0.9 (0.8 to 0.9)
Ecuador	Prevalence of treatment (taking medicine) for hypertension among adults aged 30-79 with hypertension, age-standardized	49.4 (40.8 – 57.8)	2.3 (2.3 to 2.4)	37.2 (26 – 49.1)	2.7 (2.6 to 2.7)	63 (49.6 – 75.1)	2.3 (2.2 to 2.3)
Ecuador	Prevalence of controlled hypertension among adults aged 30-79 years with hypertension, age-standardized	28.6 (19.7 – 38.3)	4.8 (4.6 to 4.9)	18.2 (9.6 – 29.1)	4.9 (4.7 to 5)	40 (24.9 – 56.1)	5 (4.8 to 5.1)
Grenada	Prevalence of hypertension among adults aged 30-79 years, age-standardized	46.6 (37.3 – 56.3)	0.6 (0.5 to 0.6)	47.6 (33.9 – 61.5)	0.6 (0.5 to 0.6)	45.6 (33.1 – 58.8)	0.6 (0.6 to 0.6)
Grenada	Prevalence of previous diagnosis of hypertension among adults aged 30-79 with hypertension, age-standardized	62.9 (50.2 – 74.9)	1.1 (1.1 to 1.1)	53 (35.3 – 70.4)	1.5 (1.5 to 1.6)	73.3 (54.5 – 87.8)	0.9 (0.9 to 0.9)
Grenada	Prevalence of treatment (taking medicine) for hypertension among adults aged 30-79 with hypertension, age-standardized	47.2 (33.6 – 60.2)	2.2 (2.2 to 2.3)	35.3 (18.6 – 53.8)	2.8 (2.8 to 2.9)	59.7 (39.1 – 78.8)	2 (2 to 2.1)
Grenada	Prevalence of controlled hypertension among adults aged 30-79 years with hypertension, age-standardized	19 (8.3 – 33)	4.5 (4.4 to 4.7)	14.7 (4 – 32.1)	5.3 (5.2 to 5.4)	23.8 (7 – 47.6)	4.2 (4 to 4.3)
Guatemala	Prevalence of hypertension among adults aged 30-79 years, age-standardized	32.2 (25.1 – 40.1)	0.6 (0.6 to 0.6)	31.5 (21 – 43.1)	0.5 (0.5 to 0.6)	32.6 (22.9 – 44.1)	0.6 (0.5 to 0.6)
Guatemala	Prevalence of previous diagnosis of hypertension among adults aged 30-79 with hypertension, age-standardized	56.3 (44.8 – 67.2)	1.5 (1.4 to 1.5)	48.5 (32.8 – 64.1)	1.8 (1.8 to 1.8)	62.7 (46.2 – 77.9)	1.2 (1.2 to 1.3)
Guatemala	Prevalence of treatment (taking medicine) for hypertension among adults aged 30-79 with hypertension, age-standardized	35.9 (24 – 49.1)	4.4 (4.3 to 4.5)	30.3 (16 – 47.5)	4.9 (4.8 to 5)	40.4 (22.9 – 60.7)	4 (3.9 to 4.1)
Guatemala	Prevalence of controlled hypertension among adults aged 30-79 years with hypertension, age-standardized	19.1 (9.3 – 32.1)	6.3 (6.1 to 6.5)	14.7 (4.7 – 31.1)	6.5 (6.3 to 6.7)	22.7 (8.3 – 43.3)	6.1 (5.8 to 6.4)
Guyana	Prevalence of hypertension among adults aged 30-79 years, age-standardized	40 (33.1 – 47.1)	0.4 (0.4 to 0.4)	38.2 (28.3 – 48.7)	0.3 (0.3 to 0.4)	41.8 (31.8 – 51.9)	0.5 (0.5 to 0.5)
Guyana	Prevalence of previous diagnosis of hypertension among adults aged 30-79 with hypertension, age-standardized	63.2 (52.6 – 72.9)	1.2 (1.2 to 1.3)	54.8 (39.2 – 69.5)	1.6 (1.6 to 1.6)	70.6 (55.1 – 83.2)	1 (1 to 1)
Guyana	Prevalence of treatment (taking medicine) for hypertension among adults aged 30-79 with hypertension, age-standardized	47.1 (35.4 – 59.1)	2.4 (2.4 to 2.4)	40.1 (24.7 – 56.5)	2.8 (2.7 to 2.8)	53.4 (35.9 – 70.2)	2.2 (2.1 to 2.2)
Guyana	Prevalence of controlled hypertension among adults aged 30-79 years with hypertension, age-standardized	20.2 (11.3 – 31.3)	4.4 (4.2 to 4.5)	16.4 (6.7 – 29.6)	5.2 (5.1 to 5.3)	23.7 (10 – 41.7)	3.9 (3.8 to 4)
Honduras	Prevalence of hypertension among adults aged 30-79 years, age-standardized	33.9 (24.7 – 43.8)	0.4 (0.4 to 0.4)	33.2 (20.1 – 48.2)	0.4 (0.4 to 0.5)	34.4 (22.2 – 48.5)	0.4 (0.3 to 0.4)
Honduras	Prevalence of previous diagnosis of hypertension among adults aged 30-79 with hypertension, age-standardized	65.8 (51.5 – 78.8)	1.2 (1.1 to 1.2)	56.1 (34.3 – 76.9)	1.7 (1.7 to 1.7)	74.3 (54.9 – 89.5)	0.9 (0.9 to 0.9)
Honduras	Prevalence of treatment (taking medicine) for hypertension among adults aged 30-79 with hypertension, age-standardized	58.3 (41.4 – 73.3)	2.4 (2.4 to 2.5)	47.9 (24.6 – 70.9)	3.1 (3.1 to 3.2)	67.3 (43.2 – 86.8)	2.1 (2 to 2.1)
Honduras	Prevalence of controlled hypertension among adults aged 30-79 years with hypertension, age-standardized	32.6 (15.8 – 52.5)	4.8 (4.7 to 4.9)	25.4 (7.2 – 52.1)	5.4 (5.3 to 5.6)	39 (13.5 – 69.1)	4.5 (4.4 to 4.6)
Haiti	Prevalence of hypertension among adults aged 30-79 years, age-standardized	42.9 (36.6 – 49.4)	0.6 (0.5 to 0.6)	37.6 (28.8 – 46.8)	0.3 (0.3 to 0.3)	47.8 (38.5 – 57.3)	0.8 (0.7 to 0.8)
Haiti	Prevalence of previous diagnosis of hypertension among adults aged 30-79 with hypertension, age-standardized	56.4 (46.6 – 65.7)	1.2 (1.2 to 1.3)	43 (29.7 – 56.8)	1.6 (1.5 to 1.6)	66 (52.3 – 78.4)	1 (1 to 1.1)
Haiti	Prevalence of treatment (taking medicine) for hypertension among adults aged 30-79 with hypertension, age-standardized	28.2 (19.7 – 37.6)	2.2 (2.1 to 2.2)	21.4 (12.2 – 32.9)	2.3 (2.2 to 2.4)	33.1 (20.2 – 47.4)	2.1 (2 to 2.2)
Haiti	Prevalence of controlled hypertension among adults aged 30-79 years with hypertension, age-standardized	8.1 (4 – 13.8)	2.8 (2.6 to 3.1)	7.5 (2.8 – 14.7)	3.6 (3.4 to 3.8)	8.6 (3 – 17.3)	2.4 (2.1 to 2.6)
Jamaica	Prevalence of hypertension among adults aged 30-79 years, age-standardized	46.3 (37.1 – 55.6)	0.7 (0.7 to 0.8)	44.5 (31.8 – 58)	0.7 (0.7 to 0.7)	47.8 (34.9 – 61.4)	0.7 (0.7 to 0.8)
Jamaica	Prevalence of previous diagnosis of hypertension among adults aged 30-79 with hypertension, age-standardized	64.8 (53 – 75.3)	1 (1 to 1)	51 (34.1 – 67.6)	1.4 (1.4 to 1.4)	76.8 (60 – 89.2)	0.8 (0.8 to 0.8)
Jamaica	Prevalence of treatment (taking medicine) for hypertension among adults aged 30-79 with hypertension, age-standardized	51.4 (38.2 – 64.2)	2 (1.9 to 2)	37.3 (20.9 – 55.1)	2.3 (2.3 to 2.4)	63.7 (43.8 – 80.8)	1.8 (1.8 to 1.8)
Jamaica	Prevalence of controlled hypertension among adults aged 30-79 years with hypertension, age-standardized	19.1 (8.6 – 32.5)	3.9 (3.7 to 4)	14 (4 – 29.6)	4.4 (4.2 to 4.6)	23.6 (7.3 – 45.9)	3.6 (3.4 to 3.8)
Saint Kitts and Nevis	Prevalence of hypertension among adults aged 30-79 years, age-standardized	45.1 (35.4 – 55.8)	0.5 (0.5 to 0.5)	45.1 (29.9 – 60.6)	0.5 (0.4 to 0.5)	45.1 (30.7 – 59.7)	0.6 (0.5 to 0.6)
Saint Kitts and Nevis	Prevalence of previous diagnosis of hypertension among adults aged 30-79 with hypertension, age-standardized	60.5 (47 – 73.2)	1.2 (1.1 to 1.2)	50.3 (31.6 – 69.4)	1.6 (1.6 to 1.6)	70.3 (49.9 – 86.3)	0.9 (0.9 to 1)
Saint Kitts and Nevis	Prevalence of treatment (taking medicine) for hypertension among adults aged 30-79 with hypertension, age-standardized	49.1 (33.5 – 63.7)	2.2 (2.1 to 2.3)	37.8 (18.9 – 59.1)	2.8 (2.8 to 2.9)	59.9 (35.7 – 80.4)	1.9 (1.9 to 2)

Saint Kitts and Nevis	Prevalence of controlled hypertension among adults aged 30-79 years with hypertension, age-standardized	22.3 (9.1 – 38.9)	4.6 (4.5 to 4.7)	16.8 (3.9 – 38.1)	5.4 (5.2 to 5.7)	27.7 (7 – 55.7)	4.2 (4.1 to 4.3)
Saint Lucia	Prevalence of hypertension among adults aged 30-79 years, age-standardized	39.8 (31.3 – 48.7)	0.4 (0.4 to 0.5)	38.8 (26.4 – 51.9)	0.4 (0.4 to 0.4)	40.8 (29.5 – 53)	0.5 (0.5 to 0.5)
Saint Lucia	Prevalence of previous diagnosis of hypertension among adults aged 30-79 with hypertension, age-standardized	69.3 (58 – 79.6)	1 (1 to 1.1)	57.3 (40.3 – 73.7)	1.5 (1.4 to 1.5)	80 (64.3 – 91.5)	0.8 (0.8 to 0.8)
Saint Lucia	Prevalence of treatment (taking medicine) for hypertension among adults aged 30-79 with hypertension, age-standardized	52.3 (38.9 – 64.8)	2.3 (2.2 to 2.3)	37.5 (20.8 – 56.2)	2.8 (2.8 to 2.9)	65.5 (44.4 – 82.3)	2 (1.9 to 2)
Saint Lucia	Prevalence of controlled hypertension among adults aged 30-79 years with hypertension, age-standardized	22 (10.4 – 36)	4.5 (4.4 to 4.6)	12.1 (3.1 – 26.5)	5 (4.9 to 5.2)	31 (11.6 – 55.2)	4.2 (4.1 to 4.3)
Mexico	Prevalence of hypertension among adults aged 30-79 years, age-standardized	32.1 (27.8 – 36.4)	0.3 (0.2 to 0.3)	32.8 (26.4 – 39.2)	0.4 (0.4 to 0.5)	31.4 (25.8 – 37.2)	0.2 (0.1 to 0.2)
Mexico	Prevalence of previous diagnosis of hypertension among adults aged 30-79 with hypertension, age-standardized	57.6 (51.1 – 64)	1.2 (1.1 to 1.3)	46.9 (37.8 – 56.2)	1.6 (1.5 to 1.6)	67.5 (58.3 – 76.5)	1 (1 to 1)
Mexico	Prevalence of treatment (taking medicine) for hypertension among adults aged 30-79 with hypertension, age-standardized	49.9 (43 – 56.9)	2.6 (2.6 to 2.7)	39.3 (30.3 – 48.8)	3.1 (3 to 3.2)	59.7 (48.8 – 69.3)	2.4 (2.3 to 2.4)
Mexico	Prevalence of controlled hypertension among adults aged 30-79 years with hypertension, age-standardized	27.7 (20.6 – 35.4)	4.6 (4.4 to 4.7)	21.2 (13.5 – 30.5)	5.8 (5.6 to 5.9)	33.7 (22.7 – 45.7)	4.1 (4 to 4.2)
Nicaragua	Prevalence of hypertension among adults aged 30-79 years, age-standardized	35.8 (26 – 46.4)	0.4 (0.4 to 0.4)	34.5 (21.1 – 50.6)	0.4 (0.4 to 0.4)	36.9 (23.3 – 52.1)	0.4 (0.3 to 0.4)
Nicaragua	Prevalence of previous diagnosis of hypertension among adults aged 30-79 with hypertension, age-standardized	67.2 (52.8 – 80.2)	1.1 (1.1 to 1.2)	56.3 (33.8 – 77.1)	1.7 (1.6 to 1.7)	75.8 (55.1 – 90.5)	0.8 (0.8 to 0.9)
Nicaragua	Prevalence of treatment (taking medicine) for hypertension among adults aged 30-79 with hypertension, age-standardized	60.6 (43.1 – 75.6)	2.4 (2.3 to 2.4)	49.7 (25.4 – 73.5)	3 (3 to 3.1)	69.2 (44.9 – 88.6)	2 (1.9 to 2.1)
Nicaragua	Prevalence of controlled hypertension among adults aged 30-79 years with hypertension, age-standardized	34.7 (16.8 – 55.1)	4.5 (4.4 to 4.7)	25.8 (7.2 – 52.2)	5.4 (5.3 to 5.5)	41.8 (15.1 – 71.5)	4.1 (4 to 4.3)
Panama	Prevalence of hypertension among adults aged 30-79 years, age-standardized	36.1 (27.3 – 45.3)	0.4 (0.4 to 0.4)	36.8 (23.8 – 51.3)	0.5 (0.4 to 0.5)	35.3 (23.8 – 48.2)	0.4 (0.3 to 0.4)
Panama	Prevalence of previous diagnosis of hypertension among adults aged 30-79 with hypertension, age-standardized	67.2 (54.4 – 78.2)	1.2 (1.1 to 1.2)	59 (41.5 – 75.7)	1.6 (1.5 to 1.6)	75.6 (58.1 – 89.2)	0.9 (0.9 to 0.9)
Panama	Prevalence of treatment (taking medicine) for hypertension among adults aged 30-79 with hypertension, age-standardized	54.7 (40.2 – 68.5)	2.7 (2.6 to 2.7)	45.7 (26.7 – 66.2)	3.2 (3.2 to 3.3)	63.9 (41.8 – 82.7)	2.3 (2.3 to 2.3)
Panama	Prevalence of controlled hypertension among adults aged 30-79 years with hypertension, age-standardized	28.5 (14.4 – 45.6)	5 (4.8 to 5.1)	21.4 (6.8 – 43.4)	5.5 (5.3 to 5.6)	35.8 (13.9 – 62)	4.7 (4.6 to 4.8)
Peru	Prevalence of hypertension among adults aged 30-79 years, age-standardized	20.7 (18.2 – 23.3)	0.1 (0 to 0.1)	22.8 (19 – 27.1)	0.4 (0.3 to 0.4)	18.4 (15.3 – 21.8)	-0.3 (-0.4 to -0.3)
Peru	Prevalence of previous diagnosis of hypertension among adults aged 30-79 with hypertension, age-standardized	46.5 (41.3 – 51.5)	1 (1 to 1)	35.5 (29 – 42)	1.1 (1.1 to 1.2)	60 (51.7 – 67.7)	1.1 (1.1 to 1.2)
Peru	Prevalence of treatment (taking medicine) for hypertension among adults aged 30-79 with hypertension, age-standardized	40 (35 – 45.2)	2.8 (2.7 to 2.8)	28.9 (23.1 – 35)	2.9 (2.8 to 2.9)	53.7 (44.9 – 62)	3 (2.9 to 3)
Peru	Prevalence of controlled hypertension among adults aged 30-79 years with hypertension, age-standardized	21.7 (17.2 – 26.6)	4.9 (4.7 to 5.2)	14.1 (9.5 – 19.4)	5.4 (5.2 to 5.6)	31.1 (22.8 – 40.4)	5 (4.9 to 5.2)
Puerto Rico	Prevalence of hypertension among adults aged 30-79 years, age-standardized	42.6 (31.7 – 54.6)	0.5 (0.5 to 0.5)	41.8 (25.5 – 59.6)	0.5 (0.4 to 0.5)	43.2 (28 – 59.7)	0.5 (0.5 to 0.6)
Puerto Rico	Prevalence of previous diagnosis of hypertension among adults aged 30-79 with hypertension, age-standardized	63.4 (46.9 – 78.2)	1.2 (1.1 to 1.2)	53.4 (29.9 – 76.6)	1.5 (1.5 to 1.5)	71.7 (47.8 – 89.6)	0.9 (0.9 to 1)
Puerto Rico	Prevalence of treatment (taking medicine) for hypertension among adults aged 30-79 with hypertension, age-standardized	49.7 (30 – 68.7)	2.3 (2.2 to 2.3)	39.6 (16.4 – 66.3)	2.7 (2.7 to 2.7)	58 (28.8 – 83.6)	2 (2 to 2)
Puerto Rico	Prevalence of controlled hypertension among adults aged 30-79 years with hypertension, age-standardized	22.8 (8.4 – 42.1)	4.5 (4.4 to 4.7)	17.8 (3.4 – 41.7)	5.3 (5.1 to 5.5)	27 (5.7 – 58.4)	4.2 (4.1 to 4.3)
Paraguay	Prevalence of hypertension among adults aged 30-79 years, age-standardized	56.4 (46.6 – 65.9)	0.6 (0.6 to 0.6)	61.6 (47.8 – 74.4)	0.6 (0.6 to 0.6)	50.9 (38 – 64.2)	0.5 (0.5 to 0.6)
Paraguay	Prevalence of previous diagnosis of hypertension among adults aged 30-79 with hypertension, age-standardized	54.7 (42.6 – 66.9)	1.3 (1.3 to 1.3)	44 (28.2 – 61.1)	1.7 (1.7 to 1.7)	67.9 (49.5 – 83.3)	1 (1 to 1.1)
Paraguay	Prevalence of treatment (taking medicine) for hypertension among adults aged 30-79 with hypertension, age-standardized	37.5 (25.9 – 49.8)	2.6 (2.5 to 2.6)	28.4 (15.3 – 44.1)	3 (3 to 3.1)	48.9 (29.8 – 68.2)	2.3 (2.3 to 2.4)
Paraguay	Prevalence of controlled hypertension among adults aged 30-79 years with hypertension, age-standardized	12.6 (5.2 – 23)	4.5 (4.3 to 4.7)	8.4 (2 – 20)	4.9 (4.7 to 5.1)	17.9 (5 – 38.1)	4.4 (4.3 to 4.6)
El Salvador	Prevalence of hypertension among adults aged 30-79 years, age-standardized	32.7 (26.1 – 40)	0.5 (0.5 to 0.5)	31.4 (22.2 – 41.8)	0.4 (0.4 to 0.5)	33.6 (24.2 – 43.8)	0.5 (0.5 to 0.6)
El Salvador	Prevalence of previous diagnosis of hypertension among adults aged 30-79 with hypertension, age-standardized	73.2 (64.1 – 81.2)	1 (1 to 1)	61.2 (46.6 – 74.8)	1.4 (1.4 to 1.5)	81.6 (69.8 – 90.8)	0.7 (0.7 to 0.7)
El Salvador	Prevalence of treatment (taking medicine) for hypertension among adults aged 30-79 with hypertension, age-standardized	62.6 (51.4 – 73)	2.2 (2.2 to 2.2)	50.6 (34.6 – 66.3)	2.5 (2.5 to 2.5)	71 (55.7 – 84.1)	2 (1.9 to 2)

El Salvador	Prevalence of controlled hypertension among adults aged 30-79 years with hypertension, age-standardized	39.4 (25.9 – 53.3)	4.2 (4.1 to 4.3)	26.6 (12.5 – 44.1)	4.2 (4.1 to 4.3)	48.3 (28.2 – 68.5)	4.1 (4 to 4.1)
Suriname	Prevalence of hypertension among adults aged 30-79 years, age-standardized	42.9 (34.2 – 51.9)	0.5 (0.5 to 0.5)	42.4 (29.7 – 55.8)	0.4 (0.4 to 0.5)	43.3 (31.2 – 56.3)	0.5 (0.5 to 0.6)
Suriname	Prevalence of previous diagnosis of hypertension among adults aged 30-79 with hypertension, age-standardized	63.8 (51.9 – 74.6)	1.2 (1.2 to 1.2)	54.6 (37.9 – 70.7)	1.6 (1.6 to 1.6)	72.5 (55 – 86.5)	1 (0.9 to 1)
Suriname	Prevalence of treatment (taking medicine) for hypertension among adults aged 30-79 with hypertension, age-standardized	49.5 (35.5 – 63)	2.4 (2.3 to 2.4)	41.6 (23.7 – 60.5)	2.8 (2.7 to 2.8)	57 (35.8 – 76.7)	2.1 (2.1 to 2.1)
Suriname	Prevalence of controlled hypertension among adults aged 30-79 years with hypertension, age-standardized	21.1 (9.9 – 35)	4.6 (4.5 to 4.7)	18.1 (5.7 – 35.2)	5.3 (5.2 to 5.5)	23.9 (7.8 – 45.7)	4.2 (4 to 4.3)
Trinidad and Tobago	Prevalence of hypertension among adults aged 30-79 years, age-standardized	42.4 (33.8 – 51.7)	0.6 (0.6 to 0.7)	43.2 (30.8 – 56.6)	0.5 (0.5 to 0.5)	41.6 (29.2 – 54.6)	0.7 (0.7 to 0.8)
Trinidad and Tobago	Prevalence of previous diagnosis of hypertension among adults aged 30-79 with hypertension, age-standardized	60 (47.8 – 71.3)	1.2 (1.2 to 1.2)	52.3 (35.5 – 68.7)	1.4 (1.4 to 1.4)	67.6 (49.2 – 82.6)	1 (1 to 1.1)
Trinidad and Tobago	Prevalence of treatment (taking medicine) for hypertension among adults aged 30-79 with hypertension, age-standardized	46.7 (33.2 – 60.4)	2.3 (2.3 to 2.4)	39.5 (23 – 57.1)	2.6 (2.6 to 2.7)	53.9 (32.5 – 73.1)	2.1 (2.1 to 2.2)
Trinidad and Tobago	Prevalence of controlled hypertension among adults aged 30-79 years with hypertension, age-standardized	20.9 (9.5 – 35.3)	4.9 (4.8 to 5)	17.3 (5.3 – 35.8)	6.1 (5.9 to 6.4)	24.5 (7.4 – 48.1)	4.2 (4 to 4.3)
Uruguay	Prevalence of hypertension among adults aged 30-79 years, age-standardized	42.4 (35.2 – 49.9)	0.4 (0.4 to 0.4)	46 (35 – 57.4)	0.5 (0.4 to 0.5)	38.9 (29.3 – 49.5)	0.4 (0.3 to 0.4)
Uruguay	Prevalence of previous diagnosis of hypertension among adults aged 30-79 with hypertension, age-standardized	66.6 (56.5 – 75.6)	1.3 (1.2 to 1.3)	61 (46.6 – 74.5)	1.7 (1.7 to 1.7)	72.7 (57.6 – 84.4)	1 (0.9 to 1)
Uruguay	Prevalence of treatment (taking medicine) for hypertension among adults aged 30-79 with hypertension, age-standardized	54.7 (43.9 – 64.6)	2.4 (2.4 to 2.4)	47.3 (33 – 61.6)	3.1 (3.1 to 3.2)	62.6 (46.5 – 76.7)	1.9 (1.9 to 2)
Uruguay	Prevalence of controlled hypertension among adults aged 30-79 years with hypertension, age-standardized	29 (17.3 – 42.3)	5.1 (4.9 to 5.2)	24.9 (11.2 – 42.1)	5.9 (5.8 to 6.1)	33.4 (16.1 – 54.2)	4.5 (4.4 to 4.7)
United States of America	Prevalence of hypertension among adults aged 30-79 years, age-standardized	31.6 (27.6 – 35.8)	0.1 (0.1 to 0.1)	34.1 (28 – 40.4)	0.1 (0.1 to 0.1)	29 (23.6 – 34.7)	0 (0 to 0.1)
United States of America	Prevalence of previous diagnosis of hypertension among adults aged 30-79 with hypertension, age-standardized	80.4 (75.2 – 84.8)	0.5 (0.4 to 0.5)	78.4 (70.8 – 85)	0.6 (0.5 to 0.6)	82.8 (75.6 – 88.7)	0.4 (0.3 to 0.4)
United States of America	Prevalence of treatment (taking medicine) for hypertension among adults aged 30-79 with hypertension, age-standardized	69.5 (62.9 – 75.6)	0.7 (0.7 to 0.8)	66.3 (56.8 – 74.7)	0.9 (0.9 to 1)	73.3 (64 – 81.5)	0.6 (0.6 to 0.6)
United States of America	Prevalence of controlled hypertension among adults aged 30-79 years with hypertension, age-standardized	47.6 (38.6 – 56.3)	2.3 (2.1 to 2.4)	44.8 (33.2 – 56.9)	2.4 (2.3 to 2.4)	51 (38.2 – 63.8)	2.1 (2 to 2.3)
Saint Vincent and the Grenadines	Prevalence of hypertension among adults aged 30-79 years, age-standardized	39.3 (31.9 – 47)	0.4 (0.3 to 0.4)	37.2 (26.3 – 48.5)	0.3 (0.3 to 0.3)	41.5 (31.1 – 52.4)	0.5 (0.4 to 0.5)
Saint Vincent and the Grenadines	Prevalence of previous diagnosis of hypertension among adults aged 30-79 with hypertension, age-standardized	61.5 (50.1 – 72)	1.2 (1.1 to 1.2)	49.1 (33.6 – 64.2)	1.7 (1.6 to 1.7)	73 (56.7 – 86.4)	1 (1 to 1)
Saint Vincent and the Grenadines	Prevalence of treatment (taking medicine) for hypertension among adults aged 30-79 with hypertension, age-standardized	45.4 (33 – 57.4)	2.3 (2.3 to 2.4)	33.3 (19.2 – 49.2)	2.8 (2.8 to 2.9)	56.7 (37.2 – 74.3)	2.2 (2.1 to 2.3)
Saint Vincent and the Grenadines	Prevalence of controlled hypertension among adults aged 30-79 years with hypertension, age-standardized	20.5 (10.6 – 33)	4.5 (4.3 to 4.6)	15.3 (5.4 – 29.8)	5.2 (5 to 5.4)	25.4 (9.3 – 46.1)	4.1 (4 to 4.3)
Venezuela (Bolivarian Republic of)	Prevalence of hypertension among adults aged 30-79 years, age-standardized	39.4 (33 – 46.4)	0.3 (0.2 to 0.3)	39.7 (30.1 – 50)	0.2 (0.2 to 0.2)	39.1 (30.5 – 48.5)	0.3 (0.3 to 0.3)
Venezuela (Bolivarian Republic of)	Prevalence of previous diagnosis of hypertension among adults aged 30-79 with hypertension, age-standardized	72.4 (63.6 – 80.2)	1.2 (1.1 to 1.2)	64.8 (51.5 – 77.5)	1.6 (1.6 to 1.7)	79.4 (67.5 – 89)	0.8 (0.8 to 0.9)
Venezuela (Bolivarian Republic of)	Prevalence of treatment (taking medicine) for hypertension among adults aged 30-79 with hypertension, age-standardized	63 (53.4 – 72.4)	2.7 (2.7 to 2.8)	54.2 (40.5 – 67.8)	3.3 (3.3 to 3.4)	71.3 (57.5 – 83.2)	2.3 (2.3 to 2.4)
Venezuela (Bolivarian Republic of)	Prevalence of controlled hypertension among adults aged 30-79 years with hypertension, age-standardized	32.7 (22 – 44.7)	5.1 (5 to 5.2)	25.3 (12.9 – 41.4)	5.6 (5.4 to 5.7)	39.6 (22.4 – 58.2)	4.8 (4.7 to 5)

Table S3A. Association between age-standardized death rates (per 100,000 population) due to ischemic heart disease and the age-standardized prevalence of controlled hypertension in the population by sex and location, 2000-2019.

Location	Sex	DF	Slope			Percentage change (%)			Variation Explained, %	Intercept			Prediction equation							
			Value	Lower 95% CI	Upper 95% CI	StdErr	t-value	p-value		(95% CI)	Value	95% Low		95% High	Value	Lower	Upper	StdErr	t-value	p-value
Region of the Americas	Both sexes	28	-0.02941	-0.02986106	-0.02895074	0.000222	-132.31	< 0.0001	-2.9 (-2.94 to -2.85)	-2.89777535	-2.94196196	-2.8535686	99.84	5.5305	5.51782036	5.5431796	0.00619	893.462	< 0.0001	=EXP((-0.0294059 * HNT control) + 5.5305)
Region of the Americas	Male	28	-0.03302	-0.03365461	-0.03238459	0.00031	-106.512	< 0.0001	-3.25 (-3.31 to -3.19)	-3.2480404	-3.30945899	-3.1865828	99.75	5.75908	5.74348097	5.774679	0.007615	756.267	< 0.0001	=EXP((-0.0330196 * HNT control) + 5.75908)
Region of the Americas	Female	28	-0.02695	-0.02742258	-0.02648482	0.000229	-117.772	< 0.0001	-2.66 (-2.7 to -2.61)	-2.65936908	-2.7049995	-2.6137173	99.8	5.30973	5.29502776	5.3244322	0.007177	739.784	< 0.0001	=EXP((-0.0269537 * HNT control) + 5.30973)
Antigua and Barbuda	Both sexes	28	-0.02396	-0.02674768	-0.02117192	0.001361	-17.6044	< 0.0001	-2.37 (-2.64 to -2.09)	-2.36750428	-2.6393131	-2.0949366		5.04402	4.99948251	5.0885575	0.021743	231.989	< 0.0001	=EXP((-0.0239598 * HNT control) + 5.04402)
Antigua and Barbuda	Male	28	-0.03719	-0.04544807	-0.02893053	0.004032	-9.22395	< 0.0001	-3.65 (-4.44 to -2.85)	-3.65062713	-4.4430774	-2.8516051		5.19857	5.10699821	5.2901418	0.044704	116.289	< 0.0001	=EXP((-0.0371893 * HNT control) + 5.19857)
Antigua and Barbuda	Female	28	-0.01487	-0.01656832	-0.01317248	0.000829	-17.9397	< 0.0001	-1.48 (-1.64 to -1.31)	-1.47603816	-1.64318249	-1.3086098		4.83272	4.79839218	4.8670478	0.016758	288.377	< 0.0001	=EXP((-0.0148704 * HNT control) + 4.83272)
Argentina	Both sexes	28	-0.06086	-0.06506158	-0.05665042	0.002053	-29.641	< 0.0001	-5.9 (-6.3 to -5.51)	-5.90412719	-6.29902439	-5.5075657		5.35899	5.30906725	5.4089128	0.024372	219.887	< 0.0001	=EXP((-0.060856 * HNT control) + 5.35899)
Argentina	Male	28	-0.08661	-0.09197398	-0.08124402	0.002619	-33.068	< 0.0001	-8.3 (-8.79 to -7.8)	-8.29644135	-8.787112	-7.8031312		5.6602	5.61429192	5.7061081	0.022412	252.557	< 0.0001	=EXP((-0.086609 * HNT control) + 5.6602)
Argentina	Female	28	-0.04518	-0.04863888	-0.04171772	0.001689	-26.7417	< 0.0001	-4.42 (-4.75 to -4.09)	-4.41729573	-4.74749556	-4.0859512		5.04308	4.98888201	5.097278	0.026459	190.603	< 0.0001	=EXP((-0.0451783 * HNT control) + 5.04308)
Bahamas	Both sexes	28	-0.02747	-0.03023821	-0.02471079	0.001349	-20.3633	< 0.0001	-2.71 (-2.98 to -2.44)	-2.71005088	-2.97856096	-2.4407977		5.07618	5.03337833	5.1189817	0.020895	242.937	< 0.0001	=EXP((-0.0274745 * HNT control) + 5.07618)
Bahamas	Male	28	-0.04061	-0.04649141	-0.03472659	0.002872	-14.1413	< 0.0001	-3.98 (-4.54 to -3.41)	-3.97955035	-4.54272404	-3.4130541		5.33297	5.27193013	5.3940099	0.029799	178.966	< 0.0001	=EXP((-0.040609 * HNT control) + 5.33297)
Bahamas	Female	28	-0.02108	-0.02317419	-0.01897701	0.001025	-20.5723	< 0.0001	-2.09 (-2.29 to -1.88)	-2.08550616	-2.29077338	-1.8798077		4.81848	4.77564699	4.861313	0.02091	230.435	< 0.0001	=EXP((-0.0210756 * HNT control) + 4.81848)
Barbados	Both sexes	28	-0.02554	-0.02782071	-0.02326629	0.001112	-22.9776	< 0.0001	-2.52 (-2.74 to -2.3)	-2.52200249	-2.74372822	-2.2997713		4.99761	4.94442884	5.0507912	0.025962	192.496	< 0.0001	=EXP((-0.0255435 * HNT control) + 4.99761)
Barbados	Male	28	-0.03472	-0.03939616	-0.03004804	0.002282	-15.2171	< 0.0001	-3.41 (-3.86 to -2.96)	-3.41262047	-3.86302181	-2.960109		5.15303	5.06932307	5.2367369	0.040864	126.101	< 0.0001	=EXP((-0.0347221 * HNT control) + 5.15303)
Barbados	Female	28	-0.01852	-0.02012771	-0.01690269	0.000787	-23.5216	< 0.0001	-1.83 (-1.99 to -1.68)	-1.83448467	-1.99264961	-1.6760645		4.79213	4.74688294	4.8373771	0.022089	216.947	< 0.0001	=EXP((-0.0185152 * HNT control) + 4.79213)
Belize	Both sexes	28	-0.03861	-0.04481577	-0.03239463	0.003032	-12.7332	< 0.0001	-3.79 (-4.38 to -3.19)	-3.78695167	-4.38263743	-3.1875549		5.22157	5.13366199	5.309478	0.042915	121.672	< 0.0001	=EXP((-0.0386052 * HNT control) + 5.22157)
Belize	Male	28	-0.04633	-0.05720181	-0.03546699	0.005305	-8.73366	< 0.0001	-4.53 (-5.56 to -3.48)	-4.52773504	-5.55965441	-3.4845402		5.23688	5.13547709	5.3382829	0.049503	105.789	< 0.0001	=EXP((-0.0463344 * HNT control) + 5.23688)
Belize	Female	28	-0.03368	-0.03796289	-0.02939931	0.00209	-16.1127	< 0.0001	-3.31 (-3.73 to -2.9)	-3.31202066	-3.72513278	-2.8971359		5.1633	5.08087783	5.2457222	0.040237	128.322	< 0.0001	=EXP((-0.0336811 * HNT control) + 5.1633)
Bolivia (Plurinational State of)	Both sexes	28	-0.01273	-0.01640455	-0.00906305	0.001792	-7.10601	< 0.0001	-1.27 (-1.63 to -0.9)	-1.26530682	-1.62707238	-0.9022109		4.92919	4.86574694	4.9926331	0.030972	159.151	< 0.0001	=EXP((-0.0127338 * HNT control) + 4.92919)
Bolivia (Plurinational State of)	Male	28	-0.01857	-0.02351129	-0.01363551	0.002411	-7.70475	< 0.0001	-1.84 (-2.32 to -1.35)	-1.84019773	-2.32370533	-1.3542967		5.04545	4.9859196	5.1049804	0.029062	173.611	< 0.0001	=EXP((-0.0185734 * HNT control) + 5.04545)
Bolivia (Plurinational State of)	Female	28	-0.00944	-0.01253967	-0.00633873	0.001514	-6.23639	< 0.0001	-0.94 (-1.25 to -0.63)	-0.93947906	-1.2461375	-0.6318684		4.813	4.74332732	4.8826727	0.034013	141.505	< 0.0001	=EXP((-0.0094392 * HNT control) + 4.813)
Brazil	Both sexes	28	-0.024	-0.02679055	-0.02120085	0.001364	-17.5869	< 0.0001	-2.37 (-2.64 to -2.1)	-2.37100922	-2.64348634	-2.0977695		5.04683	4.99272563	5.1009344	0.026413	191.074	< 0.0001	=EXP((-0.0239957 * HNT control) + 5.04683)
Brazil	Male	28	-0.024	-0.02796101	-0.02003819	0.001934	-12.4101	< 0.0001	-2.37 (-2.76 to -1.98)	-2.37138997	-2.75737235	-1.9838755		5.14198	5.08563078	5.1983292	0.027509	186.921	< 0.0001	=EXP((-0.0239996 * HNT control) + 5.14198)
Brazil	Female	28	-0.02345	-0.02558149	-0.02132531	0.001039	-22.5757	< 0.0001	-2.32 (-2.53 to -2.11)	-2.31805066	-2.52570562	-2.1099533		4.92618	4.87389707	4.9784629	0.025524	193.004	< 0.0001	=EXP((-0.0234534 * HNT control) + 4.92618)
Canada	Both sexes	28	-0.01864	-0.01949807	-0.01779133	0.000417	-44.755	< 0.0001	-1.85 (-1.93 to -1.76)	-1.84719628	-1.93092086	-1.7634002		5.31825	5.28009248	5.3564075	0.018628	285.498	< 0.0001	=EXP((-0.0186447 * HNT control) + 5.31825)
Canada	Male	28	-0.01739	-0.0179217	-0.0168553	0.00026	-66.7991	< 0.0001	-1.72 (-1.78 to -1.67)	-1.72381925	-1.77620618	-1.6714044		5.54767	5.52377984	5.5715602	0.011663	475.674	< 0.0001	=EXP((-0.0173885 * HNT control) + 5.54767)
Canada	Female	28	-0.02094	-0.02256228	-0.01932292	0.000791	-26.4872	< 0.0001	-2.07 (-2.23 to -1.91)	-2.07248266	-2.23096509	-1.9137433		5.11945	5.04670717	5.1921928	0.035512	144.161	< 0.0001	=EXP((-0.0209426 * HNT control) + 5.11945)
Chile	Both sexes	28	-0.03216	-0.03602677	-0.02828583	0.00189	-17.0181	< 0.0001	-3.16 (-3.54 to -2.79)	-3.16447837	-3.53855251	-2.7889536		4.90639	4.82557194	4.9872081	0.039454	124.357	< 0.0001	=EXP((-0.0321563 * HNT control) + 4.90639)
Chile	Male	28	-0.0343	-0.03909075	-0.02951485	0.002337	-14.6757	< 0.0001	-3.37 (-3.83 to -2.91)	-3.37211289	-3.83365627	-2.9083544		4.97406	4.90417285	5.0439471	0.034118	145.791	< 0.0001	=EXP((-0.0343028 * HNT control) + 4.97406)
Chile	Female	28	-0.03114	-0.03470503	-0.02756837	0.001742	-17.8737	< 0.0001	-3.07 (-3.41 to -2.72)	-3.06569452	-3.41097125	-2.7191835		4.84272	4.74346771	4.9419723	0.048453	99.946	< 0.0001	=EXP((-0.0311367 * HNT control) + 4.84272)

Colombia	Both sexes	28	-0.02321	-0.02703822	-0.01938578	0.001868	-12.4269	< 0.0001	-2.29 (-2.67 to -1.92)	-2.29446739	-2.66759593	-1.9199084	4.99025	4.92345882	5.0570412	0.032606	153.045	< 0.0001	=EXP((-0.023212 * HNT control) + 4.99025)
Colombia	Male	28	-0.02889	-0.03345712	-0.02433188	0.002227	-12.9722	< 0.0001	-2.85 (-3.29 to -2.4)	-2.84810457	-3.29036226	-2.4038244	5.11082	5.05480016	5.1668398	0.027348	186.881	< 0.0001	=EXP((-0.0288945 * HNT control) + 5.11082)
Colombia	Female	28	-0.02026	-0.02389494	-0.01662186	0.001775	-11.4111	< 0.0001	-2.01 (-2.36 to -1.65)	-2.00545773	-2.36117135	-1.6484482	4.85529	4.77483369	4.9357463	0.039278	123.615	< 0.0001	=EXP((-0.0202584 * HNT control) + 4.85529)
Costa Rica	Both sexes	28	-0.01595	-0.01883395	-0.01307465	0.001406	-11.3487	< 0.0001	-1.58 (-1.87 to -1.3)	-1.58277043	-1.86577001	-1.2989547	4.912	4.83148142	4.9925186	0.039308	124.962	< 0.0001	=EXP((-0.0159543 * HNT control) + 4.912)
Costa Rica	Male	28	-0.0135	-0.01655476	-0.01043944	0.001493	-9.04227	< 0.0001	-1.34 (-1.64 to -1.04)	-1.34064226	-1.64184804	-1.0385141	5.01175	4.93892401	5.084576	0.035553	140.968	< 0.0001	=EXP((-0.0134971 * HNT control) + 5.01175)
Costa Rica	Female	28	-0.01888	-0.02167051	-0.01609269	0.001362	-13.8681	< 0.0001	-1.87 (-2.14 to -1.6)	-1.87044592	-2.14373879	-1.5963898	4.80803	4.71972501	4.896335	0.043109	111.532	< 0.0001	=EXP((-0.0188816 * HNT control) + 4.80803)
Cuba	Both sexes	28	-0.02751	-0.02945855	-0.02555265	0.000953	-28.8497	< 0.0001	-2.71 (-2.9 to -2.52)	-2.71307655	-2.90288778	-2.5228943	5.55151	5.50583585	5.5971842	0.022297	248.976	< 0.0001	=EXP((-0.0275056 * HNT control) + 5.55151)
Cuba	Male	28	-0.03029	-0.03384067	-0.02674293	0.001733	-17.4849	< 0.0001	-2.98 (-3.33 to -2.64)	-2.98376011	-3.32744748	-2.6388509	5.59494	5.53094551	5.6589345	0.031241	179.089	< 0.0001	=EXP((-0.0302918 * HNT control) + 5.59494)
Cuba	Female	28	-0.02506	-0.02615608	-0.02396552	0.000535	-46.8669	< 0.0001	-2.47 (-2.58 to -2.37)	-2.4749385	-2.5816976	-2.3680624	5.47954	5.44793902	5.511141	0.015427	355.189	< 0.0001	=EXP((-0.0250608 * HNT control) + 5.47954)
Dominica	Both sexes	28	-0.03562	-0.04080897	-0.03043583	0.002532	-14.0688	< 0.0001	-3.5 (-4 to -3)	-3.49953896	-3.99874934	-2.9977327	5.02864	4.97015613	5.0871239	0.028551	176.129	< 0.0001	=EXP((-0.0356224 * HNT control) + 5.02864)
Dominica	Male	28	-0.05064	-0.05926206	-0.04201734	0.004209	-12.0303	< 0.0001	-4.94 (-5.75 to -4.11)	-4.93788824	-5.75402444	-4.1146846	5.12581	5.05439147	5.1972285	0.034865	147.017	< 0.0001	=EXP((-0.0506397 * HNT control) + 5.12581)
Dominica	Female	28	-0.02795	-0.03172879	-0.02416361	0.001847	-15.1339	< 0.0001	-2.76 (-3.12 to -2.39)	-2.75593173	-3.12307123	-2.3874009	4.93331	4.8795981	4.9870219	0.026221	188.141	< 0.0001	=EXP((-0.0279462 * HNT control) + 4.93331)
Dominican Republic	Both sexes	28	0.027318	0.022642625	0.031992375	0.002282	11.9696	< 0.0001	2.77 (2.29 to 3.25)	2.769404383	2.290091523	3.25096322	4.58646	4.51698663	4.6559334	0.033916	135.231	< 0.0001	=EXP((0.0273175 * HNT control) + 4.58646)
Dominican Republic	Male	28	0.039475	0.035452748	0.043497252	0.001964	20.1034	< 0.0001	4.03 (3.61 to 4.45)	4.026449195	3.608868944	4.44571244	4.7168	4.67116292	4.7624371	0.022279	211.713	< 0.0001	=EXP((0.039475 * HNT control) + 4.7168)
Dominican Republic	Female	28	0.017833	0.011199238	0.024466362	0.003238	5.50671	< 0.0001	1.8 (1.13 to 2.48)	1.799275377	1.126218455	2.47681191	4.47456	4.35313124	4.5959888	0.05928	75.4824	< 0.0001	=EXP((0.0178328 * HNT control) + 4.47456)
Ecuador	Both sexes	28	-0.00589	-0.00964925	-0.00212995	0.001835	-3.20898	0.003329	-0.59 (-0.96 to -0.21)	-0.58722903	-0.96028419	-0.2127687	4.54804	4.47674191	4.6193381	0.034807	130.666	< 0.0001	=EXP((-0.0058896 * HNT control) + 4.54804)
Ecuador	Male	28	-0.00341	-0.00803405	0.001211645	0.002257	-1.51151	0.141864	-0.34 (-0.8 to 0.12)	-0.34053885	-0.80018586	0.12123796	4.6421	4.58500393	4.6991961	0.027873	166.542	< 0.0001	=EXP((-0.0034112 * HNT control) + 4.6421)
Ecuador	Female	28	-0.00766	-0.01135871	-0.00396929	0.001804	-4.24899	0.000215	-0.76 (-1.13 to -0.4)	-0.76347064	-1.12944454	-0.3961421	4.4524	4.35858336	4.5462166	0.0458	97.2145	< 0.0001	=EXP((-0.007664 * HNT control) + 4.4524)
El Salvador	Both sexes	28	-0.00703	-0.00882731	-0.00523809	0.000876	-8.02761	< 0.0001	-0.7 (-0.88 to -0.52)	-0.70080284	-0.87884632	-0.5224396	4.839	4.79241615	4.8855839	0.022742	212.783	< 0.0001	=EXP((-0.0070327 * HNT control) + 4.839)
El Salvador	Male	28	-0.0086	-0.01163871	-0.00557009	0.001481	-5.80859	< 0.0001	-0.86 (-1.16 to -0.56)	-0.85674881	-1.15712378	-0.555461	4.99563	4.94176427	5.0494957	0.026296	189.973	< 0.0001	=EXP((-0.0086044 * HNT control) + 4.99563)
El Salvador	Female	28	-0.00625	-0.00803929	-0.00445211	0.000876	-7.13291	< 0.0001	-0.62 (-0.8 to -0.44)	-0.62262362	-0.80070567	-0.4442219	4.68335	4.62562056	4.7410794	0.028183	166.179	< 0.0001	=EXP((-0.0062457 * HNT control) + 4.68335)
Grenada	Both sexes	28	-0.03774	-0.04366643	-0.03180697	0.002895	-13.0358	< 0.0001	-3.7 (-4.27 to -3.13)	-3.70335434	-4.27267772	-3.130645	5.32493	5.24866514	5.4011949	0.037231	143.023	< 0.0001	=EXP((-0.0377367 * HNT control) + 5.32493)
Grenada	Male	28	-0.05281	-0.06117722	-0.04445238	0.004082	-12.9372	< 0.0001	-5.14 (-5.93 to -4.35)	-5.14443313	-5.93434756	-4.3478854	5.64434	5.5701641	5.7185159	0.036212	155.871	< 0.0001	=EXP((-0.0528148 * HNT control) + 5.64434)
Grenada	Female	28	-0.02933	-0.03762249	-0.02103531	0.004049	-7.24382	< 0.0001	-2.89 (-3.69 to -2.08)	-2.89029819	-3.69235575	-2.081561	5.04819	4.904992	5.191388	0.069907	72.213	< 0.0001	=EXP((-0.0293289 * HNT control) + 5.04819)
Guatemala	Both sexes	28	-0.02613	-0.03458831	-0.01767749	0.004128	-6.33091	< 0.0001	-2.58 (-3.4 to -1.75)	-2.57943909	-3.39969766	-1.7522155	5.05999	4.97820079	5.1417792	0.039928	126.727	< 0.0001	=EXP((-0.0261329 * HNT control) + 5.05999)
Guatemala	Male	28	-0.01874	-0.02744705	-0.01003395	0.00425	-4.40914	0.000139	-1.86 (-2.71 to -1)	-1.85659887	-2.70738021	-0.9983778	5.07991	5.01512236	5.1446976	0.031628	160.613	< 0.0001	=EXP((-0.0187405 * HNT control) + 5.07991)
Guatemala	Female	28	-0.02874	-0.03765683	-0.01983037	0.004351	-6.60582	< 0.0001	-2.83 (-3.7 to -1.96)	-2.83344324	-3.69566321	-1.9635038	5.03851	4.9356435	5.1413765	0.050218	100.333	< 0.0001	=EXP((-0.0287436 * HNT control) + 5.03851)
Guyana	Both sexes	28	-0.02044	-0.02361492	-0.01725708	0.001552	-13.1687	< 0.0001	-2.02 (-2.33 to -1.71)	-2.02286002	-2.33382727	-1.7109026	5.70155	5.65616938	5.7469306	0.022154	257.358	< 0.0001	=EXP((-0.020436 * HNT control) + 5.70155)
Guyana	Male	28	-0.02266	-0.02692366	-0.01839614	0.002082	-10.8865	< 0.0001	-2.24 (-2.66 to -1.82)	-2.24050927	-2.65644487	-1.8227964	5.79563	5.75214969	5.8391103	0.021226	273.039	< 0.0001	=EXP((-0.0226599 * HNT control) + 5.79563)
Guyana	Female	28	-0.01817	-0.02225014	-0.01407986	0.001994	-9.10854	< 0.0001	-1.8 (-2.2 to -1.4)	-1.80010108	-2.20044298	-1.3981204	5.56844	5.4942934	5.6425866	0.036197	153.836	< 0.0001	=EXP((-0.018165 * HNT control) + 5.56844)
Haiti	Both sexes	28	-0.02601	-0.03127394	-0.02074266	0.002571	-10.1177	< 0.0001	-2.57 (-3.08 to -2.05)	-2.56729973	-3.07899642	-2.0529015	5.53657	5.49712505	5.5760149	0.019256	287.518	< 0.0001	=EXP((-0.0260083 * HNT control) + 5.53657)
Haiti	Male	28	-0.04725	-0.05721316	-0.03727684	0.004866	-9.70854	< 0.0001	-4.61 (-5.56 to -3.66)	-4.61463252	-5.56072623	-3.6590608	5.62908	5.57278199	5.685378	0.027484	204.815	< 0.0001	=EXP((-0.047245 * HNT control) + 5.62908)
Haiti	Female	28	-0.00947	-0.013595	-0.005335	0.002016	-4.6945	< 0.0001	-0.94 (-1.35 to -0.53)	-0.94203479	-1.35030038	-0.5320796	5.40857	5.37148215	5.4456578	0.018106	298.722	< 0.0001	=EXP((-0.009465 * HNT control) + 5.40857)
Honduras	Both sexes	28	0.01012	0.007672258	0.012567542	0.001195	8.46938	< 0.0001	1.02 (0.77 to 1.26)	1.017127936	0.770176549	1.26468451	4.76926	4.72134346	4.8171765	0.023392	203.883	< 0.0001	=EXP((0.0101199 * HNT control) + 4.76926)
Honduras	Male	28	0.014077	0.010514935	0.017638065	0.001739	8.09602	< 0.0001	1.42 (1.06 to 1.78)	1.417604044	1.05704107	1.77945348	4.86562	4.81388359	4.9173564	0.025257	192.645	< 0.0001	=EXP((0.0140765 * HNT control) + 4.86562)

Honduras	Female	28	0.007766	0.003430741	0.012102059	0.002117	3.66924	0.001012	0.78 (0.34 to 1.22)	0.779663671	0.343663317	1.21755848	4.67262	4.56803919	4.7772008	0.051055	91.5218	< 0.0001	=EXP((0.0077664 * HNT control) + 4.67262)
Jamaica	Both sexes	28	-0.01834	-0.02508172	-0.01158928	0.003293	-5.56729	< 0.0001	-1.82 (-2.48 to -1.15)	-1.81684274	-2.4769791	-1.1522379	4.42917	4.33243909	4.5259009	0.047223	93.7936	< 0.0001	=EXP((-0.0183355 * HNT control) + 4.42917)
Jamaica	Male	28	-0.01864	-0.03059493	-0.00667567	0.005839	-3.19181	0.003476	-1.85 (-3.01 to -0.67)	-1.84627364	-3.01316372	-0.6653442	4.52273	4.41328873	4.6321713	0.053428	84.6517	< 0.0001	=EXP((-0.0186353 * HNT control) + 4.52273)
Jamaica	Female	28	-0.02028	-0.0256539	-0.0149055	0.002624	-7.72961	< 0.0001	-2.01 (-2.53 to -1.48)	-2.00754499	-2.53276356	-1.4794962	4.35451	4.25228629	4.4567337	0.049904	87.2578	< 0.0001	=EXP((-0.0202797 * HNT control) + 4.35451)
Mexico	Both sexes	28	-0.00457	-0.00809435	-0.00104865	0.00172	-2.65818	0.012838	-0.46 (-0.81 to -0.1)	-0.45610666	-0.80616796	-0.10481	4.68284	4.62579125	4.7398888	0.02785	168.143	< 0.0001	=EXP((-0.0045715 * HNT control) + 4.68284)
Mexico	Male	28	-0.00157	-0.00600208	0.00285728	0.002163	-0.72712	0.473189	-0.16 (-0.6 to 0.29)	-0.15711644	-0.59841039	0.28613664	4.76183	4.71111902	4.812541	0.024756	192.348	< 0.0001	=EXP((-0.0015724 * HNT control) + 4.76183)
Mexico	Female	28	-0.00695	-0.00990856	-0.00398744	0.001445	-4.80733	< 0.0001	-0.69 (-0.99 to -0.4)	-0.69239185	-0.98596348	-0.3979498	4.61637	4.55512427	4.6776157	0.029899	154.398	< 0.0001	=EXP((-0.006948 * HNT control) + 4.61637)
Nicaragua	Both sexes	28	0.007718	0.003701883	0.011734917	0.001961	3.93635	0.000498	0.77 (0.37 to 1.18)	0.774826363	0.370874371	1.1804041	4.80903	4.72274023	4.8953198	0.042125	114.16	< 0.0001	=EXP((0.0077184 * HNT control) + 4.80903)
Nicaragua	Male	28	0.00512	0.003427925	0.006811075	0.000826	6.19985	< 0.0001	0.51 (0.34 to 0.68)	0.513262703	0.343380744	0.68343227	5.09437	5.06922478	5.1195152	0.012276	415.004	< 0.0001	=EXP((0.0051195 * HNT control) + 5.09437)
Nicaragua	Female	28	0.010016	0.003713266	0.016317934	0.003077	3.25529	0.002959	1.01 (0.37 to 1.65)	1.006592399	0.372016846	1.64517989	4.51887	4.34943764	4.6883024	0.082714	54.6324	< 0.0001	=EXP((0.0100156 * HNT control) + 4.51887)
Panama	Both sexes	28	-0.02431	-0.02941297	-0.01920903	0.002491	-9.76063	< 0.0001	-2.4 (-2.9 to -1.9)	-2.40178679	-2.89846163	-1.9025715	4.71674	4.63176019	4.8017198	0.041486	113.695	< 0.0001	=EXP((-0.024311 * HNT control) + 4.71674)
Panama	Male	28	-0.02825	-0.03429473	-0.02220707	0.002951	-9.57496	< 0.0001	-2.79 (-3.37 to -2.2)	-2.78555748	-3.37133264	-2.1962313	4.8562	4.78431156	4.9280884	0.035095	138.374	< 0.0001	=EXP((-0.0282509 * HNT control) + 4.8562)
Panama	Female	28	-0.02262	-0.0273537	-0.0178831	0.002312	-9.78437	< 0.0001	-2.24 (-2.7 to -1.77)	-2.23645217	-2.69829782	-1.7724144	4.5482	4.44613033	4.6502697	0.049829	91.2765	< 0.0001	=EXP((-0.0226184 * HNT control) + 4.5482)
Paraguay	Both sexes	28	-0.01485	-0.02392665	-0.00577695	0.00443	-3.35237	0.002309	-1.47 (-2.36 to -0.58)	-1.4742056	-2.36426803	-0.5760292	4.63707	4.56706384	4.7070762	0.034176	135.683	< 0.0001	=EXP((-0.0148518 * HNT control) + 4.63707)
Paraguay	Male	28	-0.00268	-0.01563347	0.01027847	0.006325	-0.42333	0.67529	-0.27 (-1.55 to 1.03)	-0.26739187	-1.5511902	1.03314753	4.7415	4.68224675	4.8007532	0.028927	163.915	< 0.0001	=EXP((-0.0026775 * HNT control) + 4.7415)
Paraguay	Female	28	-0.02116	-0.02784907	-0.01447133	0.003265	-6.48005	< 0.0001	-2.09 (-2.75 to -1.44)	-2.09378937	-2.74648583	-1.4367125	4.53347	4.45591362	4.6110264	0.037862	119.738	< 0.0001	=EXP((-0.0211602 * HNT control) + 4.53347)
Peru	Both sexes	28	-0.03558	-0.04117655	-0.02998405	0.002732	-13.0236	< 0.0001	-3.5 (-4.03 to -2.95)	-3.4954762	-4.03403113	-2.9538989	4.66251	4.5773065	4.7477135	0.041595	112.093	< 0.0001	=EXP((-0.0355803 * HNT control) + 4.66251)
Peru	Male	28	-0.04946	-0.05822827	-0.04069473	0.00428	-11.5568	< 0.0001	-4.83 (-5.66 to -3.99)	-4.82582005	-5.65654377	-3.9877816	4.74428	4.66113577	4.8274242	0.04059	116.884	< 0.0001	=EXP((-0.0494615 * HNT control) + 4.74428)
Peru	Female	28	-0.02819	-0.03235872	-0.02401228	0.002037	-13.8347	< 0.0001	-2.78 (-3.18 to -2.37)	-2.77919945	-3.18407782	-2.3726279	4.5455	4.45715835	4.6338417	0.043127	105.398	< 0.0001	=EXP((-0.0281855 * HNT control) + 4.5455)
Puerto Rico	Both sexes	28	-0.0568	-0.05913621	-0.05447239	0.001138	-49.9003	< 0.0001	-5.52 (-5.74 to -5.3)	-5.52210555	-5.74216251	-5.3015348	5.32337	5.28663919	5.3601008	0.017931	296.875	< 0.0001	=EXP((-0.0568043 * HNT control) + 5.32337)
Puerto Rico	Male	28	-0.06567	-0.07046296	-0.06088584	0.002338	-28.0942	< 0.0001	-6.36 (-6.8 to -5.91)	-6.35642819	-6.80377425	-5.9069348	5.38603	5.3334943	5.4385657	0.025647	210.006	< 0.0001	=EXP((-0.0656744 * HNT control) + 5.38603)
Puerto Rico	Female	28	-0.05222	-0.05444722	-0.05000258	0.001085	-48.1367	< 0.0001	-5.09 (-5.3 to -4.88)	-5.08846132	-5.29915064	-4.8773033	5.21587	5.17170122	5.2600388	0.021563	241.896	< 0.0001	=EXP((-0.0522249 * HNT control) + 5.21587)
Saint Kitts and Nevis	Both sexes	28	-0.04593	-0.04948042	-0.04237778	0.001734	-26.4916	< 0.0001	-4.49 (-4.83 to -4.15)	-4.48903229	-4.82762106	-4.149239	5.57807	5.5240281	5.6321119	0.026382	211.432	< 0.0001	=EXP((-0.0459291 * HNT control) + 5.57807)
Saint Kitts and Nevis	Male	28	-0.06105	-0.06915144	-0.05294976	0.003955	-15.4374	< 0.0001	-5.92 (-6.68 to -5.16)	-5.92243647	-6.68146482	-5.1572344	5.74682	5.66551544	5.8281246	0.039692	144.787	< 0.0001	=EXP((-0.0610506 * HNT control) + 5.74682)
Saint Kitts and Nevis	Female	28	-0.03518	-0.03846963	-0.03189137	0.001606	-21.9097	< 0.0001	-3.46 (-3.77 to -3.14)	-3.45688598	-3.77390693	-3.1388206	5.36765	5.30107492	5.4342251	0.032501	165.154	< 0.0001	=EXP((-0.0351805 * HNT control) + 5.36765)
Saint Lucia	Both sexes	28	-0.05646	-0.06300984	-0.04990536	0.003199	-17.6502	< 0.0001	-5.49 (-6.11 to -4.87)	-5.48934438	-6.10657654	-4.8680547	5.27171	5.17098675	5.3724333	0.049172	107.211	< 0.0001	=EXP((-0.0564576 * HNT control) + 5.27171)
Saint Lucia	Male	28	-0.09531	-0.11249241	-0.07812219	0.00839	-11.3603	< 0.0001	-9.09 (-10.64 to -7.51)	-9.09064729	-10.6395872	-7.5148586	5.3328	5.20605276	5.4595472	0.061876	86.1852	< 0.0001	=EXP((-0.0953073 * HNT control) + 5.3328)
Saint Lucia	Female	28	-0.04497	-0.04903334	-0.04090526	0.001984	-22.6658	< 0.0001	-4.4 (-4.79 to -4.01)	-4.39731686	-4.78506153	-4.0079932	5.19074	5.09824643	5.2832336	0.045154	114.956	< 0.0001	=EXP((-0.0449693 * HNT control) + 5.19074)
Saint Vincent and the Grenadines	Both sexes	28	-0.02295	-0.02844658	-0.01746302	0.002681	-8.56201	< 0.0001	-2.27 (-2.8 to -1.73)	-2.2693343	-2.8045785	-1.7311426	5.30621	5.22839921	5.3840208	0.037986	139.689	< 0.0001	=EXP((-0.0229548 * HNT control) + 5.30621)
Saint Vincent and the Grenadines	Male	28	-0.03641	-0.04320396	-0.02962344	0.003315	-10.9849	< 0.0001	-3.58 (-4.23 to -2.92)	-3.57586957	-4.22839702	-2.9188962	5.40855	5.34457988	5.4725201	0.031229	173.189	< 0.0001	=EXP((-0.0364137 * HNT control) + 5.40855)
Saint Vincent and the Grenadines	Female	28	-0.01616	-0.02205294	-0.01026846	0.002877	-5.61809	< 0.0001	-1.6 (-2.18 to -1.02)	-1.60308165	-2.18115547	-1.0215916	5.19217	5.08148063	5.3028594	0.054037	96.0858	< 0.0001	=EXP((-0.0161607 * HNT control) + 5.19217)
Suriname	Both sexes	28	-0.03206	-0.03969812	-0.02442028	0.003729	-8.59678	< 0.0001	-3.16 (-3.89 to -2.41)	-3.15507518	-3.89204739	-2.4124517	5.23911	5.12854006	5.3496799	0.053979	97.0592	< 0.0001	=EXP((-0.0320592 * HNT control) + 5.23911)

Suriname	Male	28	-0.03202	-0.04132222	-0.02271818	0.004541	-7.05119	< 0.0001	-3.15 (-4.05 to -2.25)	-3.15129816	-4.0480098	-2.2462064	5.36738	5.26408784	5.4706722	0.050426	106.442	< 0.0001	=EXP((-0.0320202 * HNT control) + 5.36738)
Suriname	Female	28	-0.03322	-0.03959507	-0.02684333	0.003113	-10.6725	< 0.0001	-3.27 (-3.88 to -2.65)	-3.26735016	-3.88214316	-2.6486248	5.10784	4.99440269	5.2212773	0.055378	92.2354	< 0.0001	=EXP((-0.0332192 * HNT control) + 5.10784)
Trinidad and Tobago	Both sexes	28	-0.04779	-0.05073344	-0.04484836	0.001437	-33.27	< 0.0001	-4.67 (-4.95 to -4.39)	-4.66668918	-4.94679864	-4.3857543	5.70055	5.6598842	5.7412158	0.019852	287.147	< 0.0001	=EXP((-0.0477909 * HNT control) + 5.70055)
Trinidad and Tobago	Male	28	-0.05336	-0.05891936	-0.04780224	0.002714	-19.6642	< 0.0001	-5.2 (-5.72 to -4.67)	-5.19621013	-5.72172057	-4.6677705	5.74537	5.68989319	5.8008468	0.027083	212.14	< 0.0001	=EXP((-0.0533608 * HNT control) + 5.74537)
Trinidad and Tobago	Female	28	-0.04437	-0.04658395	-0.04216225	0.001079	-41.1145	< 0.0001	-4.34 (-4.55 to -4.13)	-4.34030155	-4.55155678	-4.1285787	5.64651	5.60670761	5.6863124	0.019431	290.595	< 0.0001	=EXP((-0.0443731 * HNT control) + 5.64651)
United States of America	Both sexes	28	-0.02559	-0.02854434	-0.02264246	0.001441	-17.766	< 0.0001	-2.53 (-2.81 to -2.24)	-2.52686652	-2.81407945	-2.2388048	5.88243	5.75510327	6.0097567	0.062159	94.6354	< 0.0001	=EXP((-0.0255934 * HNT control) + 5.88243)
United States of America	Male	28	-0.02689	-0.03012084	-0.02365116	0.001579	-17.0249	< 0.0001	-2.65 (-2.97 to -2.34)	-2.6527789	-2.96717324	-2.3373659	6.16175	6.02802568	6.2954743	0.065282	94.3865	< 0.0001	=EXP((-0.026886 * HNT control) + 6.16175)
United States of America	Female	28	-0.02505	-0.02796037	-0.02214043	0.001421	-17.6333	< 0.0001	-2.47 (-2.76 to -2.19)	-2.47392424	-2.75730939	-2.1897132	5.63493	5.5028274	5.7670326	0.06449	87.3763	< 0.0001	=EXP((-0.0250504 * HNT control) + 5.63493)
Uruguay	Both sexes	28	-0.03502	-0.03831639	-0.03172461	0.001609	-21.7651	< 0.0001	-3.44 (-3.76 to -3.12)	-3.44143785	-3.75916009	-3.1226667	5.63493	5.5028274	5.7670326	0.06449	87.3763	< 0.0001	=EXP((-0.0350205 * HNT control) + 5.63493)
Uruguay	Male	28	-0.03588	-0.04098391	-0.03077629	0.002492	-14.4004	< 0.0001	-3.52 (-4.02 to -3.03)	-3.52440392	-4.01554275	-3.030752	5.29324	5.22242349	5.3640565	0.034572	153.11	< 0.0001	=EXP((-0.0358801 * HNT control) + 5.29324)
Uruguay	Female	28	-0.03332	-0.03565016	-0.03099864	0.001135	-29.3496	< 0.0001	-3.28 (-3.5 to -3.05)	-3.2775259	-3.50221791	-3.0523107	4.9259	4.87283929	4.9789607	0.025903	190.164	< 0.0001	=EXP((-0.0333244 * HNT control) + 4.9259)
Venezuela (Bolivarian Republic of)	Both sexes	28	-0.01293	-0.01567674	-0.01018946	0.001339	-9.65557	< 0.0001	-1.28 (-1.56 to -1.01)	-1.28498268	-1.55544961	-1.0137727	5.16687	5.11479068	5.2189493	0.025424	203.225	< 0.0001	=EXP((-0.0129331 * HNT control) + 5.16687)
Venezuela (Bolivarian Republic of)	Male	28	-0.01476	-0.01822194	-0.01129586	0.001691	-8.73009	< 0.0001	-1.47 (-1.81 to -1.12)	-1.46505213	-1.80569214	-1.1232304	5.42218	5.3726911	5.4716689	0.02416	224.431	< 0.0001	=EXP((-0.0147589 * HNT control) + 5.42218)
Venezuela (Bolivarian Republic of)	Female	28	-0.01299	-0.01695641	-0.00902579	0.001936	-6.71081	< 0.0001	-1.29 (-1.68 to -0.9)	-1.29070799	-1.68134558	-0.8985183	4.89686	4.8030112	4.9907088	0.045816	106.882	< 0.0001	=EXP((-0.0129911 * HNT control) + 4.89686)

Table S3B. Association between age-standardized death rates (per 100,000 population) due to stroke and the age-standardized prevalence of controlled hypertension in the population by sex and location, 2000-2019.

Location	Sex	DF	Slope						Percentage change			Variation Explained, %	Intercept					Prediction equation		
			Value	Lower 95% CI	Upper 95% CI	StdErr	t-value	p-value	(95% CI)	Value	95% Low		95% High	Value	Lower	Upper	StdErr		t-value	p-value
Region of the Americas	Both sexes	28	-0.02402	-0.0244452	-0.0235902	0.000209	-115.081	< 0.0001	-2.37 (-2.41 to -2.33)	-2.37316	-2.41488	-2.33141	99.79	4.57206	4.560153	4.583967	0.005813	786.572	< 0.0001	=EXP((-0.0240177 * HNT control) + 4.57206)
Region of the Americas	Male	28	-0.02828	-0.02893202	-0.02761818	0.000321	-88.1798	< 0.0001	-2.79 (-2.85 to -2.72)	-2.78791	-2.85175	-2.72403	99.64	4.67247	4.656336	4.688604	0.007877	593.209	< 0.0001	=EXP((-0.0282751 * HNT control) + 4.67247)
Region of the Americas	Female	28	-0.02079	-0.02117339	-0.02041221	0.000186	-111.909	< 0.0001	-2.06 (-2.1 to -2.02)	-2.05781	-2.09508	-2.02053	99.78	4.48244	4.470504	4.494376	0.005827	769.26	< 0.0001	=EXP((-0.0207928 * HNT control) + 4.48244)
Antigua and Barbuda	Both sexes	28	-0.02626	-0.03002192	-0.02249648	0.001837	-14.2951	< 0.0001	-2.59 (-2.96 to -2.22)	-2.59174	-2.95757	-2.22453		4.84803	4.787919	4.908141	0.029345	165.205	< 0.0001	=EXP((-0.0262592 * HNT control) + 4.84803)
Antigua and Barbuda	Male	28	-0.03932	-0.04901819	-0.02961321	0.004737	-8.30042	< 0.0001	-3.86 (-4.78 to -2.92)	-3.85529	-4.78362	-2.9179		4.90599	4.798411	5.013569	0.052518	93.4149	< 0.0001	=EXP((-0.0393157 * HNT control) + 4.90599)
Antigua and Barbuda	Female	28	-0.01735	-0.01990103	-0.01480337	0.001244	-13.9454	< 0.0001	-1.72 (-1.97 to -1.47)	-1.72025	-1.97043	-1.46943		4.73001	4.678479	4.781541	0.025156	188.024	< 0.0001	=EXP((-0.0173522 * HNT control) + 4.73001)
Argentina	Both sexes	28	-0.07126	-0.07408333	-0.06843547	0.001379	-51.6878	< 0.0001	-6.88 (-7.14 to -6.61)	-6.87797	-7.14057	-6.61463		4.94612	4.912597	4.979643	0.016365	302.231	< 0.0001	=EXP((-0.0712594 * HNT control) + 4.94612)
Argentina	Male	28	-0.10151	-0.10508725	-0.09792275	0.001749	-58.0433	< 0.0001	-9.65 (-9.98 to -9.33)	-9.65233	-9.9754	-9.32811		5.15013	5.119477	5.180783	0.014964	344.165	< 0.0001	=EXP((-0.101505 * HNT control) + 5.15013)
Argentina	Female	28	-0.05229	-0.05480979	-0.04976661	0.001231	-42.4747	< 0.0001	-5.09 (-5.33 to -4.85)	-5.09447	-5.33348	-4.85485		4.74762	4.708128	4.787112	0.01928	246.251	< 0.0001	=EXP((-0.0522882 * HNT control) + 4.74762)
Bahamas	Both sexes	28	-0.02098	-0.02326793	-0.01869507	0.001116	-18.7971	< 0.0001	-2.08 (-2.3 to -1.85)	-2.07629	-2.29993	-1.85214		4.5609	4.52549	4.59631	0.017287	263.843	< 0.0001	=EXP((-0.0209815 * HNT control) + 4.5609)
Bahamas	Male	28	-0.02871	-0.03318305	-0.02424175	0.002183	-13.1556	< 0.0001	-2.83 (-3.26 to -2.4)	-2.83041	-3.26385	-2.39503		4.61692	4.570529	4.663311	0.022648	203.86	< 0.0001	=EXP((-0.0287124 * HNT control) + 4.61692)
Bahamas	Female	28	-0.01656	-0.01825245	-0.01487135	0.000825	-20.0686	< 0.0001	-1.64 (-1.81 to -1.48)	-1.64255	-1.80869	-1.47613		4.4955	4.460996	4.530004	0.016845	266.883	< 0.0001	=EXP((-0.0165619 * HNT control) + 4.4955)
Barbados	Both sexes	28	-0.01943	-0.0221848	-0.016684	0.001343	-14.4741	< 0.0001	-1.92 (-2.19 to -1.65)	-1.92468	-2.19405	-1.65456		4.76465	4.700417	4.828883	0.031358	151.945	< 0.0001	=EXP((-0.0194344 * HNT control) + 4.76465)
Barbados	Male	28	-0.02812	-0.03302084	-0.02322576	0.002391	-11.7624	< 0.0001	-2.77 (-3.25 to -2.3)	-2.77315	-3.24816	-2.29581		4.8122	4.724488	4.899912	0.042819	112.384	< 0.0001	=EXP((-0.0281233 * HNT control) + 4.8122)
Barbados	Female	28	-0.01349	-0.0156438	-0.0113442	0.00105	-12.8579	< 0.0001	-1.34 (-1.55 to -1.13)	-1.34034	-1.55221	-1.12801		4.66879	4.608465	4.729115	0.02945	158.534	< 0.0001	=EXP((-0.013494 * HNT control) + 4.66879)
Belize	Both sexes	28	-0.02314	-0.02866688	-0.01760672	0.0027	-8.57006	< 0.0001	-2.29 (-2.83 to -1.75)	-2.28712	-2.82599	-1.74526		4.4829	4.404622	4.561178	0.038214	117.311	< 0.0001	=EXP((-0.0231368 * HNT control) + 4.4829)
Belize	Male	28	-0.02455	-0.03461315	-0.01449165	0.004912	-4.99895	< 0.0001	-2.43 (-3.4 to -1.44)	-2.42534	-3.4021	-1.43871		4.43241	4.338534	4.526286	0.045829	96.7161	< 0.0001	=EXP((-0.0245524 * HNT control) + 4.43241)
Belize	Female	28	-0.02192	-0.02536848	-0.01846412	0.001685	-13.0044	< 0.0001	-2.17 (-2.5 to -1.83)	-2.16779	-2.50494	-1.82947		4.51701	4.450559	4.583461	0.032441	139.24	< 0.0001	=EXP((-0.0219163 * HNT control) + 4.51701)
Bolivia (Plurinational State of)	Both sexes	28	-0.0216	-0.02486179	-0.01833721	0.001593	-13.5624	< 0.0001	-2.14 (-2.46 to -1.82)	-2.13679	-2.45553	-1.81701		4.74848	4.692096	4.804864	0.027526	172.51	< 0.0001	=EXP((-0.0215995 * HNT control) + 4.74848)
Bolivia (Plurinational State of)	Male	28	-0.03022	-0.03486155	-0.02557285	0.002267	-13.3273	< 0.0001	-2.98 (-3.43 to -2.52)	-2.97652	-3.42609	-2.52486		4.7182	4.662209	4.774191	0.027334	172.614	< 0.0001	=EXP((-0.0302172 * HNT control) + 4.7182)
Bolivia (Plurinational State of)	Female	28	-0.01655	-0.01920941	-0.01388519	0.0013	-12.7328	< 0.0001	-1.64 (-1.9 to -1.38)	-1.64111	-1.90261	-1.37892		4.76776	4.707938	4.827582	0.029204	163.255	< 0.0001	=EXP((-0.0165473 * HNT control) + 4.76776)
Brazil	Both sexes	28	-0.02986	-0.03276998	-0.02694922	0.001421	-21.0158	< 0.0001	-2.94 (-3.22 to -2.66)	-2.94182	-3.22389	-2.65893		4.9568	4.900459	5.013141	0.027505	180.215	< 0.0001	=EXP((-0.0298596 * HNT control) + 4.9568)
Brazil	Male	28	-0.03183	-0.03648828	-0.02716352	0.002276	-13.9829	< 0.0001	-3.13 (-3.58 to -2.68)	-3.13248	-3.58306	-2.67979		4.96708	4.90076	5.0334	0.032376	153.417	< 0.0001	=EXP((-0.0318259 * HNT control) + 4.96708)
Brazil	Female	28	-0.02709	-0.02908616	-0.02509504	0.000974	-27.8089	< 0.0001	-2.67 (-2.87 to -2.48)	-2.67269	-2.86672	-2.47828		4.91572	4.866694	4.964746	0.023934	205.388	< 0.0001	=EXP((-0.0270906 * HNT control) + 4.91572)
Canada	Both sexes	28	-0.01498	-0.01600815	-0.01394745	0.000503	-29.7746	< 0.0001	-1.49 (-1.59 to -1.39)	-1.48662	-1.58807	-1.38506		4.10204	4.055965	4.148115	0.022493	182.368	< 0.0001	=EXP((-0.0149778 * HNT control) + 4.10204)
Canada	Male	28	-0.01468	-0.01551017	-0.01385423	0.000404	-36.324	< 0.0001	-1.46 (-1.54 to -1.38)	-1.45749	-1.53905	-1.37587		4.12958	4.092484	4.166676	0.01811	228.033	< 0.0001	=EXP((-0.0146822 * HNT control) + 4.12958)
Canada	Female	28	-0.0159	-0.01738412	-0.01441188	0.000726	-21.9134	< 0.0001	-1.58 (-1.72 to -1.43)	-1.57723	-1.72339	-1.43085		4.10143	4.034683	4.168177	0.032585	125.87	< 0.0001	=EXP((-0.015898 * HNT control) + 4.10143)
Chile	Both sexes	28	-0.02217	-0.02448889	-0.01984311	0.001134	-19.5471	< 0.0001	-2.19 (-2.42 to -1.96)	-2.19221	-2.41915	-1.96475		4.51203	4.463528	4.560532	0.023678	190.56	< 0.0001	=EXP((-0.022166 * HNT control) + 4.51203)
Chile	Male	28	-0.02711	-0.03017685	-0.02404555	0.001497	-18.1149	< 0.0001	-2.67 (-2.97 to -2.38)	-2.6747	-2.97261	-2.37588		4.5532	4.508451	4.597949	0.021846	208.426	< 0.0001	=EXP((-0.0271112 * HNT control) + 4.5532)
Chile	Female	28	-0.01837	-0.02048573	-0.01625167	0.001034	-17.7734	< 0.0001	-1.82 (-2.03 to -1.61)	-1.8201	-2.02773	-1.61203		4.45654	4.397657	4.515423	0.028746	155.033	< 0.0001	=EXP((-0.0183687 * HNT control) + 4.45654)
Colombia	Both sexes	28	-0.03441	-0.03876972	-0.03005128	0.002128	-16.1699	< 0.0001	-3.38 (-3.8 to -2.96)	-3.38252	-3.80278	-2.96042		4.38241	4.306316	4.458504	0.037148	117.972	< 0.0001	=EXP((-0.0344105 * HNT control) + 4.38241)
Colombia	Male	28	-0.04426	-0.04982799	-0.03869941	0.002716	-16.295	< 0.0001	-4.33 (-4.86 to -3.8)	-4.32984	-4.86069	-3.79602		4.34294	4.274622	4.411258	0.033352	130.217	< 0.0001	=EXP((-0.0442637 * HNT control) + 4.34294)
Colombia	Female	28	-0.02928	-0.03312601	-0.02544039	0.001876	-15.6091	< 0.0001	-2.89 (-3.26 to -2.51)	-2.88586	-3.25834	-2.51195		4.41242	4.3274	4.49744	0.041506	106.309	< 0.0001	=EXP((-0.0292832 * HNT control) + 4.41242)
Costa Rica	Both sexes	28	-0.01555	-0.01922853	-0.01186327	0.001798	-8.6473	< 0.0001	-1.54 (-1.9 to -1.18)	-1.54257	-1.90448	-1.17932		3.94817	3.845203	4.051137	0.050267	78.5437	< 0.0001	=EXP((-0.0155459 * HNT control) + 3.94817)
Costa Rica	Male	28	-0.01408	-0.01809838	-0.01005182	0.001964	-7.16608	< 0.0001	-1.4 (-1.79 to -1)	-1.39765	-1.79356	-1.00015		3.90839	3.812562	4.004218	0.046782	83.5451	< 0.0001	=EXP((-0.0140751 * HNT control) + 3.90839)
Costa Rica	Female	28	-0.01687	-0.02031418	-0.01341842	0.001683	-10.0201	< 0.0001	-1.67 (-2.01 to -1.33)	-1.67249	-2.01092	-1.33288		3.98845	3.879278	4.097622	0.053296	74.8358	< 0.0001	=EXP((-0.0168663 * HNT control) + 3.98845)

Cuba	Both sexes	28	-0.0133	-0.01436585	-0.01223755	0.00052	-25.6062	< 0.0001	-1.32 (-1.43 to -1.22)	-1.32136	-1.42632	-1.2163	4.43115	4.406264	4.456036	0.012149	364.739	< 0.0001	=EXP((-0.0133017 * HNT control) + 4.43115)
Cuba	Male	28	-0.01057	-0.01209689	-0.00903371	0.000748	-14.131	< 0.0001	-1.05 (-1.2 to -0.9)	-1.05097	-1.2024	-0.8993	4.34847	4.320852	4.376088	0.013483	322.526	< 0.0001	=EXP((-0.0105653 * HNT control) + 4.34847)
Cuba	Female	28	-0.01506	-0.01623567	-0.01389353	0.000572	-26.3501	< 0.0001	-1.5 (-1.61 to -1.38)	-1.49517	-1.61046	-1.37975	4.51355	4.479763	4.547337	0.016494	273.645	< 0.0001	=EXP((-0.0150646 * HNT control) + 4.51355)
Dominica	Both sexes	28	-0.00739	-0.01140406	-0.00336774	0.001962	-3.76523	0.000786	-0.74 (-1.13 to -0.34)	-0.73587	-1.13393	-0.33621	4.41516	4.369851	4.460469	0.022119	199.608	< 0.0001	=EXP((-0.0073859 * HNT control) + 4.41516)
Dominica	Male	28	-0.01537	-0.02125586	-0.00948694	0.002873	-5.35088	< 0.0001	-1.53 (-2.1 to -0.94)	-1.52539	-2.10315	-0.94421	4.48425	4.43551	4.53299	0.023794	188.461	< 0.0001	=EXP((-0.0153714 * HNT control) + 4.48425)
Dominica	Female	28	-0.00423	-0.00768919	-0.00076681	0.00169	-2.50225	0.018455	-0.42 (-0.77 to -0.08)	-0.42191	-0.76597	-0.07665	4.35251	4.303363	4.401657	0.023993	181.408	< 0.0001	=EXP((-0.004228 * HNT control) + 4.35251)
Dominican Republic	Both sexes	28	0.020093	0.0163609	0.0238253	0.001822	11.0281	< 0.0001	2.03 (1.65 to 2.41)	2.029633	1.649547	2.411139	4.13319	4.077727	4.188653	0.027076	152.651	< 0.0001	=EXP((0.0200931 * HNT control) + 4.13319)
Dominican Republic	Male	28	0.029866	0.025431	0.0343006	0.002165	13.7945	< 0.0001	3.03 (2.58 to 3.49)	3.031626	2.575713	3.489565	4.20279	4.152471	4.253109	0.024565	171.089	< 0.0001	=EXP((0.0298658 * HNT control) + 4.20279)
Dominican Republic	Female	28	0.012423	0.00687018	0.01797582	0.002711	4.58285	< 0.0001	1.25 (0.69 to 1.81)	1.250049	0.689383	1.813836	4.08759	3.985945	4.189235	0.049621	82.3755	< 0.0001	=EXP((0.012423 * HNT control) + 4.08759)
Ecuador	Both sexes	28	-0.01499	-0.01907573	-0.01090627	0.001994	-7.51766	< 0.0001	-1.49 (-1.89 to -1.08)	-1.48792	-1.88949	-1.0847	4.2112	4.133735	4.288665	0.037817	111.357	< 0.0001	=EXP((-0.014991 * HNT control) + 4.2112)
Ecuador	Male	28	-0.02246	-0.0284736	-0.0164556	0.002934	-7.65802	< 0.0001	-2.22 (-2.81 to -1.63)	-2.22141	-2.8072	-1.63209	4.22885	4.154636	4.303064	0.03623	116.721	< 0.0001	=EXP((-0.0224646 * HNT control) + 4.22885)
Ecuador	Female	28	-0.01165	-0.01484222	-0.00845898	0.001558	-7.47769	< 0.0001	-1.16 (-1.47 to -0.84)	-1.1583	-1.47326	-0.84233	4.20028	4.119241	4.281319	0.039562	106.169	< 0.0001	=EXP((-0.0116506 * HNT control) + 4.20028)
El Salvador	Both sexes	28	-0.02575	-0.03106248	-0.02044312	0.002592	-9.93522	< 0.0001	-2.54 (-3.06 to -2.02)	-2.5424	-3.0585	-2.02356	4.38654	4.248709	4.524371	0.067287	65.1915	< 0.0001	=EXP((-0.0257528 * HNT control) + 4.38654)
El Salvador	Male	28	-0.04051	-0.0479089	-0.0331149	0.003611	-11.2187	< 0.0001	-3.97 (-4.68 to -3.26)	-3.97023	-4.67794	-3.25726	4.52338	4.392068	4.654692	0.064104	70.5627	< 0.0001	=EXP((-0.0405119 * HNT control) + 4.52338)
El Salvador	Female	28	-0.02044	-0.02490781	-0.01597019	0.002182	-9.36882	< 0.0001	-2.02 (-2.46 to -1.58)	-2.02315	-2.46002	-1.58433	4.30369	4.159857	4.447523	0.070217	61.2914	< 0.0001	=EXP((-0.020439 * HNT control) + 4.30369)
Grenada	Both sexes	28	-0.0367	-0.04174203	-0.03165937	0.002461	-14.9125	< 0.0001	-3.6 (-4.09 to -3.12)	-3.60354	-4.08828	-3.11635	5.2019	5.137063	5.266737	0.031652	164.345	< 0.0001	=EXP((-0.0367007 * HNT control) + 5.2019)
Grenada	Male	28	-0.05207	-0.0619372	-0.0422012	0.004817	-10.8085	< 0.0001	-5.07 (-6.01 to -4.13)	-5.07368	-6.00581	-4.13231	5.34094	5.253409	5.428471	0.042731	124.989	< 0.0001	=EXP((-0.0520692 * HNT control) + 5.34094)
Grenada	Female	28	-0.02958	-0.03662035	-0.02253345	0.003439	-8.60156	< 0.0001	-2.91 (-3.6 to -2.23)	-2.91438	-3.59579	-2.22815	5.1245	5.002886	5.246114	0.05937	86.3146	< 0.0001	=EXP((-0.0295769 * HNT control) + 5.1245)
Guatemala	Both sexes	28	-0.02817	-0.03429118	-0.02205482	0.002987	-9.43247	< 0.0001	-2.78 (-3.37 to -2.18)	-2.77798	-3.37099	-2.18134	4.32507	4.265889	4.384251	0.028891	149.702	< 0.0001	=EXP((-0.028173 * HNT control) + 4.32507)
Guatemala	Male	28	-0.02352	-0.03001849	-0.01702011	0.003173	-7.4129	< 0.0001	-2.32 (-2.96 to -1.69)	-2.32449	-2.95724	-1.68761	4.29596	4.247598	4.344322	0.02361	181.959	< 0.0001	=EXP((-0.0235193 * HNT control) + 4.29596)
Guatemala	Female	28	-0.02905	-0.03538409	-0.02271551	0.003092	-9.39436	< 0.0001	-2.86 (-3.48 to -2.25)	-2.86319	-3.47654	-2.24595	4.34694	4.273837	4.420043	0.035688	121.805	< 0.0001	=EXP((-0.0290498 * HNT control) + 4.34694)
Guyana	Both sexes	28	-0.03574	-0.04010816	-0.03136884	0.002133	-16.7532	< 0.0001	-3.51 (-3.93 to -3.09)	-3.51074	-3.93145	-3.08819	5.73413	5.671748	5.796512	0.030454	188.289	< 0.0001	=EXP((-0.0357385 * HNT control) + 5.73413)
Guyana	Male	28	-0.04468	-0.05210456	-0.03725484	0.003625	-12.3264	< 0.0001	-4.37 (-5.08 to -3.66)	-4.36963	-5.07704	-3.65694	5.74657	5.670852	5.822288	0.036964	155.463	< 0.0001	=EXP((-0.0446797 * HNT control) + 5.74657)
Guyana	Female	28	-0.0283	-0.03197301	-0.02463479	0.001791	-15.8016	< 0.0001	-2.79 (-3.15 to -2.43)	-2.79071	-3.14673	-2.43338	5.66757	5.600974	5.734166	0.032511	174.327	< 0.0001	=EXP((-0.0283039 * HNT control) + 5.66757)
Haiti	Both sexes	28	-0.03141	-0.03739531	-0.02541909	0.002923	-10.7437	< 0.0001	-3.09 (-3.67 to -2.51)	-3.09191	-3.67047	-2.50987	5.46524	5.420382	5.510098	0.021899	249.568	< 0.0001	=EXP((-0.0314072 * HNT control) + 5.46524)
Haiti	Male	28	-0.05758	-0.06672798	-0.04842342	0.004468	-12.8864	< 0.0001	-5.59 (-6.46 to -4.73)	-5.59496	-6.45504	-4.72697	5.40376	5.352071	5.455449	0.025234	214.147	< 0.0001	=EXP((-0.0575757 * HNT control) + 5.40376)
Haiti	Female	28	-0.01431	-0.01973687	-0.00888933	0.002648	-5.40573	< 0.0001	-1.42 (-1.95 to -0.88)	-1.42112	-1.95434	-0.88499	5.47641	5.427704	5.525116	0.023777	230.321	< 0.0001	=EXP((-0.0143131 * HNT control) + 5.47641)
Honduras	Both sexes	28	0.009413	0.00645335	0.01237325	0.001445	6.51424	< 0.0001	0.95 (0.65 to 1.25)	0.945774	0.647422	1.245011	4.42794	4.369992	4.485888	0.028289	156.523	< 0.0001	=EXP((0.0094133 * HNT control) + 4.42794)
Honduras	Male	28	0.012945	0.00999745	0.01589235	0.001439	8.99618	< 0.0001	1.3 (1 to 1.6)	1.302905	1.004759	1.601931	4.37819	4.335373	4.421007	0.020902	209.458	< 0.0001	=EXP((0.0129449 * HNT control) + 4.37819)
Honduras	Female	28	0.007645	0.00314292	0.01214608	0.002198	3.47851	0.001667	0.77 (0.31 to 1.22)	0.767379	0.314786	1.222014	4.47095	4.362366	4.579534	0.053009	84.3433	< 0.0001	=EXP((0.0076445 * HNT control) + 4.47095)
Jamaica	Both sexes	28	-0.0195	-0.02588133	-0.01312507	0.003114	-6.26378	< 0.0001	-1.93 (-2.55 to -1.3)	-1.93142	-2.55493	-1.30393	4.78815	4.696699	4.879601	0.044645	107.25	< 0.0001	=EXP((-0.0195032 * HNT control) + 4.78815)
Jamaica	Male	28	-0.01497	-0.02780823	-0.00213677	0.006266	-2.38942	0.023851	-1.49 (-2.74 to -0.21)	-1.4861	-2.74251	-0.21345	4.70089	4.583432	4.818348	0.057341	81.9808	< 0.0001	=EXP((-0.0149725 * HNT control) + 4.70089)
Jamaica	Female	28	-0.02206	-0.02668589	-0.01743611	0.002258	-9.77087	< 0.0001	-2.18 (-2.63 to -1.73)	-2.18194	-2.6333	-1.7285	4.86364	4.775669	4.951611	0.042946	113.25	< 0.0001	=EXP((-0.022061 * HNT control) + 4.86364)
Mexico	Both sexes	28	-0.02614	-0.03024571	-0.02202669	0.002006	-13.0276	< 0.0001	-2.58 (-2.98 to -2.18)	-2.57976	-2.97929	-2.17859	4.16562	4.099069	4.232171	0.032489	128.216	< 0.0001	=EXP((-0.0261362 * HNT control) + 4.16562)
Mexico	Male	28	-0.02792	-0.03321802	-0.02262858	0.002585	-10.8031	< 0.0001	-2.75 (-3.27 to -2.24)	-2.7537	-3.26724	-2.23745	4.07128	4.010668	4.131892	0.02959	137.59	< 0.0001	=EXP((-0.0279233 * HNT control) + 4.07128)
Mexico	Female	28	-0.02499	-0.02840729	-0.02157831	0.001667	-14.9934	< 0.0001	-2.47 (-2.8 to -2.13)	-2.46831	-2.80076	-2.13472	4.24974	4.179103	4.320377	0.034484	123.238	< 0.0001	=EXP((-0.0249928 * HNT control) + 4.24974)
Nicaragua	Both sexes	28	-0.01691	-0.02003438	-0.01378142	0.001526	-11.0777	< 0.0001	-1.68 (-1.98 to -1.37)	-1.67658	-1.9835	-1.36869	4.59929	4.532121	4.666459	0.032791	140.262	< 0.0001	=EXP((-0.0169079 * HNT control) + 4.59929)
Nicaragua	Male	28	-0.02486	-0.02720687	-0.02252093	0.001144	-21.7372	< 0.0001	-2.46 (-2.68 to -2.23)	-2.45573	-2.68401	-2.22692	4.71744	4.682609	4.752271	0.017004	277.429	< 0.0001	=EXP((-0.0248639 * HNT control) + 4.71744)
Nicaragua	Female	28	-0.01203	-0.01704296	-0.00701724	0.002447	-4.91592	< 0.0001	-1.2 (-1.69 to -0.7)	-1.1958	-1.68986	-0.69927	4.45718	4.322416	4.591944	0.06579	67.7491	< 0.0001	=EXP((-0.0120301 * HNT control) + 4.45718)
Panama	Both sexes	28	-0.02789	-0.03022586	-0.02554934	0.001142	-24.4312	< 0.0001	-2.75 (-2.98 to -2.52)	-2.75023	-2.97736	-2.52257	4.47869	4.439744	4.517636	0.019013	235.564	< 0.0001	=EXP((-0.0278876 * HNT control) + 4.47869)

Panama	Male	28	-0.03188	-0.03516381	-0.02859539	0.001603	-19.8842	< 0.0001	-3.14 (-3.46 to -2.82)	-3.13768	-3.45527	-2.81904	4.52563	4.486567	4.564693	0.01907	237.316	< 0.0001	=EXP((-0.0318796 * HNT control) + 4.52563)
Panama	Female	28	-0.0256	-0.02769821	-0.02349979	0.001025	-24.9793	< 0.0001	-2.53 (-2.73 to -2.32)	-2.52741	-2.73181	-2.32258	4.42146	4.376211	4.466709	0.02209	200.158	< 0.0001	=EXP((-0.025599 * HNT control) + 4.42146)
Paraguay	Both sexes	28	-0.05101	-0.05683369	-0.04518071	0.002844	-17.9323	< 0.0001	-4.97 (-5.52 to -4.42)	-4.97282	-5.52488	-4.41753	4.74103	4.696083	4.785977	0.021943	216.065	< 0.0001	=EXP((-0.0510072 * HNT control) + 4.74103)
Paraguay	Male	28	-0.06357	-0.07570805	-0.05143155	0.005926	-10.7279	< 0.0001	-6.16 (-7.29 to -5.01)	-6.15914	-7.29132	-5.01313	4.71904	4.663527	4.774553	0.027101	174.13	< 0.0001	=EXP((-0.0635698 * HNT control) + 4.71904)
Paraguay	Female	28	-0.04113	-0.04462129	-0.03764031	0.001704	-24.1384	< 0.0001	-4.03 (-4.36 to -3.69)	-4.02964	-4.36404	-3.69407	4.74511	4.70464	4.78558	0.019757	240.175	< 0.0001	=EXP((-0.0411308 * HNT control) + 4.74511)
Peru	Both sexes	28	-0.04271	-0.04869954	-0.03672046	0.002924	-14.6068	< 0.0001	-4.18 (-4.75 to -3.61)	-4.18108	-4.75327	-3.60544	4.25968	4.168489	4.350871	0.044518	95.684	< 0.0001	=EXP((-0.04271 * HNT control) + 4.25968)
Peru	Male	28	-0.06165	-0.07069756	-0.05259784	0.004418	-13.9536	< 0.0001	-5.98 (-6.83 to -5.12)	-5.97859	-6.82564	-5.12385	4.24205	4.156221	4.327879	0.0419	101.241	< 0.0001	=EXP((-0.0616477 * HNT control) + 4.24205)
Peru	Female	28	-0.03228	-0.03677283	-0.02778197	0.002195	-14.7075	< 0.0001	-3.18 (-3.61 to -2.74)	-3.1762	-3.61049	-2.73996	4.2437	4.148537	4.338863	0.046457	91.3464	< 0.0001	=EXP((-0.0322774 * HNT control) + 4.2437)
Puerto Rico	Both sexes	28	-0.04601	-0.04869244	-0.04333216	0.001308	-35.1669	< 0.0001	-4.5 (-4.75 to -4.24)	-4.49698	-4.7526	-4.24067	4.16251	4.120293	4.204727	0.02061	201.966	< 0.0001	=EXP((-0.0460123 * HNT control) + 4.16251)
Puerto Rico	Male	28	-0.05561	-0.05894929	-0.05227271	0.00163	-34.1233	< 0.0001	-5.41 (-5.72 to -5.09)	-5.4093	-5.72454	-5.093	4.16807	4.131444	4.204696	0.01788	233.114	< 0.0001	=EXP((-0.055611 * HNT control) + 4.16807)
Puerto Rico	Female	28	-0.04008	-0.04334152	-0.03681488	0.001593	-25.1569	< 0.0001	-3.93 (-4.24 to -3.61)	-3.92857	-4.24157	-3.61455	4.11929	4.054432	4.184148	0.031663	130.099	< 0.0001	=EXP((-0.0400782 * HNT control) + 4.11929)
Saint Kitts and Nevis	Both sexes	28	-0.03917	-0.04294991	-0.03538309	0.001847	-21.2058	< 0.0001	-3.84 (-4.2 to -3.48)	-3.84094	-4.20406	-3.47644	5.63201	5.574438	5.689582	0.028106	200.387	< 0.0001	=EXP((-0.0391665 * HNT control) + 5.63201)
Saint Kitts and Nevis	Male	28	-0.04906	-0.05709787	-0.04101213	0.003926	-12.4935	< 0.0001	-4.79 (-5.55 to -4.02)	-4.78712	-5.54984	-4.01825	5.57518	5.494457	5.655903	0.039408	141.474	< 0.0001	=EXP((-0.049055 * HNT control) + 5.57518)
Saint Kitts and Nevis	Female	28	-0.03204	-0.03485883	-0.02921957	0.001377	-23.2758	< 0.0001	-3.15 (-3.43 to -2.88)	-3.15314	-3.42583	-2.87968	5.64196	5.584888	5.699032	0.027862	202.5	< 0.0001	=EXP((-0.0320392 * HNT control) + 5.64196)
Saint Lucia	Both sexes	28	-0.04592	-0.05166722	-0.04016418	0.002808	-16.3529	< 0.0001	-4.49 (-5.04 to -3.94)	-4.48775	-5.03552	-3.93683	5.29403	5.205615	5.382445	0.043163	122.653	< 0.0001	=EXP((-0.0459157 * HNT control) + 5.29403)
Saint Lucia	Male	28	-0.07236	-0.08595352	-0.05875968	0.006638	-10.9007	< 0.0001	-6.98 (-8.24 to -5.71)	-6.98009	-8.23631	-5.70667	5.21114	5.110857	5.311423	0.048956	106.445	< 0.0001	=EXP((-0.0723566 * HNT control) + 5.21114)
Saint Lucia	Female	28	-0.03672	-0.04053621	-0.03290999	0.001862	-19.7279	< 0.0001	-3.61 (-3.97 to -3.24)	-3.6057	-3.97256	-3.23743	5.33143	5.244649	5.418211	0.042365	125.845	< 0.0001	=EXP((-0.0367231 * HNT control) + 5.33143)
Saint Vincent and the Grenadines	Both sexes	28	-0.01781	-0.02295116	-0.01266364	0.002511	-7.09145	< 0.0001	-1.76 (-2.27 to -1.26)	-1.76498	-2.26898	-1.25838	4.80402	4.73114	4.8769	0.035579	135.025	< 0.0001	=EXP((-0.0178074 * HNT control) + 4.80402)
Saint Vincent and the Grenadines	Male	28	-0.01923	-0.02465673	-0.01381287	0.002647	-7.26699	< 0.0001	-1.91 (-2.44 to -1.37)	-1.9051	-2.43552	-1.37179	4.71013	4.659051	4.761209	0.024936	188.889	< 0.0001	=EXP((-0.0192348 * HNT control) + 4.71013)
Saint Vincent and the Grenadines	Female	28	-0.01622	-0.02137303	-0.01107077	0.002515	-6.45078	< 0.0001	-1.61 (-2.11 to -1.1)	-1.6091	-2.11462	-1.10097	4.86263	4.765863	4.959397	0.04724	102.935	< 0.0001	=EXP((-0.0162219 * HNT control) + 4.86263)
Suriname	Both sexes	28	-0.01508	-0.02195821	-0.00819579	0.003359	-4.48818	0.000112	-1.5 (-2.17 to -0.82)	-1.49639	-2.17189	-0.81623	4.95556	4.855959	5.055161	0.048624	101.917	< 0.0001	=EXP((-0.015077 * HNT control) + 4.95556)
Suriname	Male	28	-0.01479	-0.02366751	-0.00591109	0.004334	-3.41224	0.001979	-1.47 (-2.34 to -0.59)	-1.46805	-2.33896	-0.58937	5.00136	4.902775	5.099945	0.048128	103.918	< 0.0001	=EXP((-0.0147893 * HNT control) + 5.00136)
Suriname	Female	28	-0.01648	-0.02205587	-0.01089573	0.002724	-6.04811	< 0.0001	-1.63 (-2.18 to -1.08)	-1.63408	-2.18144	-1.08366	4.93225	4.83297	5.03153	0.048467	101.766	< 0.0001	=EXP((-0.0164758 * HNT control) + 4.93225)
Trinidad and Tobago	Both sexes	28	-0.0461	-0.04939251	-0.04279869	0.00161	-28.6397	< 0.0001	-4.5 (-4.82 to -4.19)	-4.50493	-4.81925	-4.18958	5.08178	5.036215	5.127345	0.022244	228.457	< 0.0001	=EXP((-0.0460956 * HNT control) + 5.08178)
Trinidad and Tobago	Male	28	-0.04938	-0.05575525	-0.04300515	0.003112	-15.8665	< 0.0001	-4.82 (-5.42 to -4.21)	-4.81808	-5.42294	-4.20935	5.00933	4.945703	5.072957	0.031062	161.272	< 0.0001	=EXP((-0.0493802 * HNT control) + 5.00933)
Trinidad and Tobago	Female	28	-0.04318	-0.04462354	-0.04174266	0.000703	-61.4134	< 0.0001	-4.23 (-4.36 to -4.09)	-4.2264	-4.36426	-4.08834	5.14552	5.119588	5.171452	0.01266	406.453	< 0.0001	=EXP((-0.0431831 * HNT control) + 5.14552)
United States of America	Both sexes	28	-0.01579	-0.01811796	-0.01345824	0.001137	-13.8808	< 0.0001	-1.57 (-1.8 to -1.34)	-1.56641	-1.79548	-1.33681	4.2703	4.16977	4.37083	0.049077	87.0121	< 0.0001	=EXP((-0.0157881 * HNT control) + 4.2703)
United States of America	Male	28	-0.01805	-0.02072591	-0.01537669	0.001306	-13.8255	< 0.0001	-1.79 (-2.05 to -1.53)	-1.78894	-2.05126	-1.52591	4.36515	4.254591	4.475709	0.053973	80.8759	< 0.0001	=EXP((-0.0180513 * HNT control) + 4.36515)
United States of America	Female	28	-0.01434	-0.01636664	-0.01230956	0.00099	-14.4785	< 0.0001	-1.42 (-1.62 to -1.22)	-1.42358	-1.62334	-1.22341	4.2018	4.109713	4.293887	0.044956	93.4659	< 0.0001	=EXP((-0.0143381 * HNT control) + 4.2018)
Uruguay	Both sexes	28	-0.02891	-0.03120299	-0.02661661	0.00112	-25.8229	< 0.0001	-2.85 (-3.07 to -2.63)	-2.84959	-3.07212	-2.62655	4.84595	4.804161	4.887739	0.020401	237.539	< 0.0001	=EXP((-0.0289098 * HNT control) + 4.84595)
Uruguay	Male	28	-0.03443	-0.03701091	-0.03184769	0.00126	-27.3174	< 0.0001	-3.38 (-3.63 to -3.13)	-3.38434	-3.63344	-3.13459	4.86514	4.829318	4.900962	0.017488	278.206	< 0.0001	=EXP((-0.0344293 * HNT control) + 4.86514)
Uruguay	Female	28	-0.02415	-0.02653136	-0.02176964	0.001162	-20.7782	< 0.0001	-2.39 (-2.62 to -2.15)	-2.38612	-2.61825	-2.15344	4.79681	4.742494	4.851126	0.026516	180.9	< 0.0001	=EXP((-0.0241505 * HNT control) + 4.79681)
Venezuela (Bolivarian Republic of)	Both sexes	28	-0.01375	-0.01664679	-0.01085881	0.001413	-9.73417	< 0.0001	-1.37 (-1.65 to -1.08)	-1.36587	-1.6509	-1.08001	4.34594	4.291007	4.400873	0.026818	162.055	< 0.0001	=EXP((-0.0137528 * HNT control) + 4.34594)
Venezuela (Bolivarian Republic of)	Male	28	-0.01541	-0.01883526	-0.01197514	0.001675	-9.19972	< 0.0001	-1.53 (-1.87 to -1.19)	-1.52871	-1.8659	-1.19037	4.44881	4.399791	4.497829	0.023931	185.905	< 0.0001	=EXP((-0.0154052 * HNT control) + 4.44881)
Venezuela (Bolivarian Republic of)	Female	28	-0.01343	-0.01723163	-0.00962057	0.001858	-7.22689	< 0.0001	-1.33 (-1.71 to -0.96)	-1.33364	-1.7084	-0.95744	4.26247	4.172405	4.352535	0.043968	96.9439	< 0.0001	=EXP((-0.0134261 * HNT control) + 4.26247)

