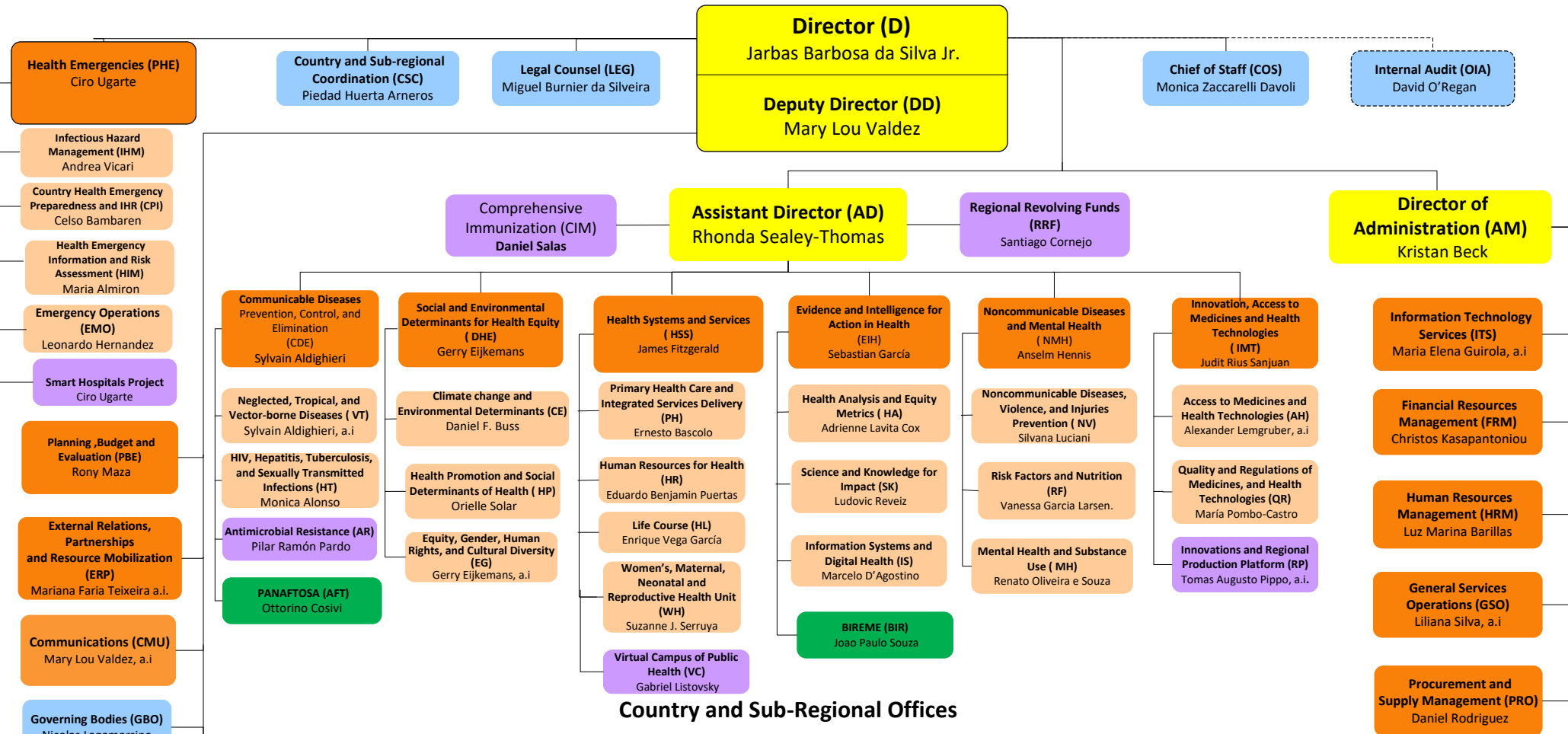


# Organizational Chart of the Pan American Sanitary Bureau



## Country and Sub-Regional Offices

<b>ARGENTINA (ARG)</b> Eva Jané-Llopis	<b>BAHAMAS (BHS)*</b> Eldonna Boisson  *Also serves: • Turks & Caicos Islands	<b>COLOMBIA (COL)</b> Gina Tambini Gómez	<b>HAITI (HTI)</b> Oscar Martin Barreneche	<b>PERU (PER)</b> Maureen Birmingham
<b>BARBADOS (BRB) &amp; EASTERN CARIBBEAN COUNTRIES (ECC)*</b> Amalia del Riego  *Also serves: • Anguilla • Antigua and Barbuda • British Virgin Islands • Dominica • French Guiana • French St. Martin • Grenada • Guadeloupe • Martinique • Montserrat • St. Kitts and Nevis • St. Lucia • St. Vincent and the Grenadines	<b>BELIZE (BLZ)</b> Karen Lewis-Bell	<b>COSTA RICA (CRI)</b> Alfonso Tenorio Gnecco	<b>HONDURAS (HND)</b> Ana Solis Ortega	<b>SURINAME (SUR)</b> Yafflo W. Ouattara
	<b>BOLIVIA (BOL)</b> Alma Morales	<b>CUBA (CUB)</b> Mario Cruz Peñate	<b>JAMAICA (JAM)*</b> Ian Stein  *Also serves: • Bermuda • Cayman Islands	<b>TRINIDAD &amp; TOBAGO (TTO)*</b> Gabriel Vivas Francesconi  *Also serves: • Aruba, Bonaire, Curacao, Saba, Sint Eustatius, Sint Maarten
	<b>BRAZIL (BRA)</b> Socorro Gross-Galiano	<b>DOMINICAN REPUBLIC (DOM)</b> Alba María Roperó	<b>MEXICO (MEX)</b> Jose Gerardo Moya	<b>URUGUAY (URY)</b> Caroline Chang
	<b>CARIBBEAN SUB-REGION (CRB)*</b> Juan Manuel Sotelo, a.i  *Based in Barbados	<b>ECUADOR (ECU)</b> Sonia Quezada Bolaños	<b>NICARAGUA (NIC)</b> Ana Elena Chévez	<b>VENEZUELA (VEN)</b> Cristian Morales
	<b>CHILE (CHL)</b> Giovanni Escalante	<b>EL SALVADOR (SLV)</b> Angel Manuel Alvarez, a.i	<b>PANAMA (PAN)</b> Ana Riviére Cinnamon	
		<b>GUATEMALA (GTM)</b> Lilian Reneau-Vernon, a.i	<b>PARAGUAY (PRY)</b> Marcelo Korc	
		<b>GUYANA (GUY)</b> Kim Eva Dickson		

