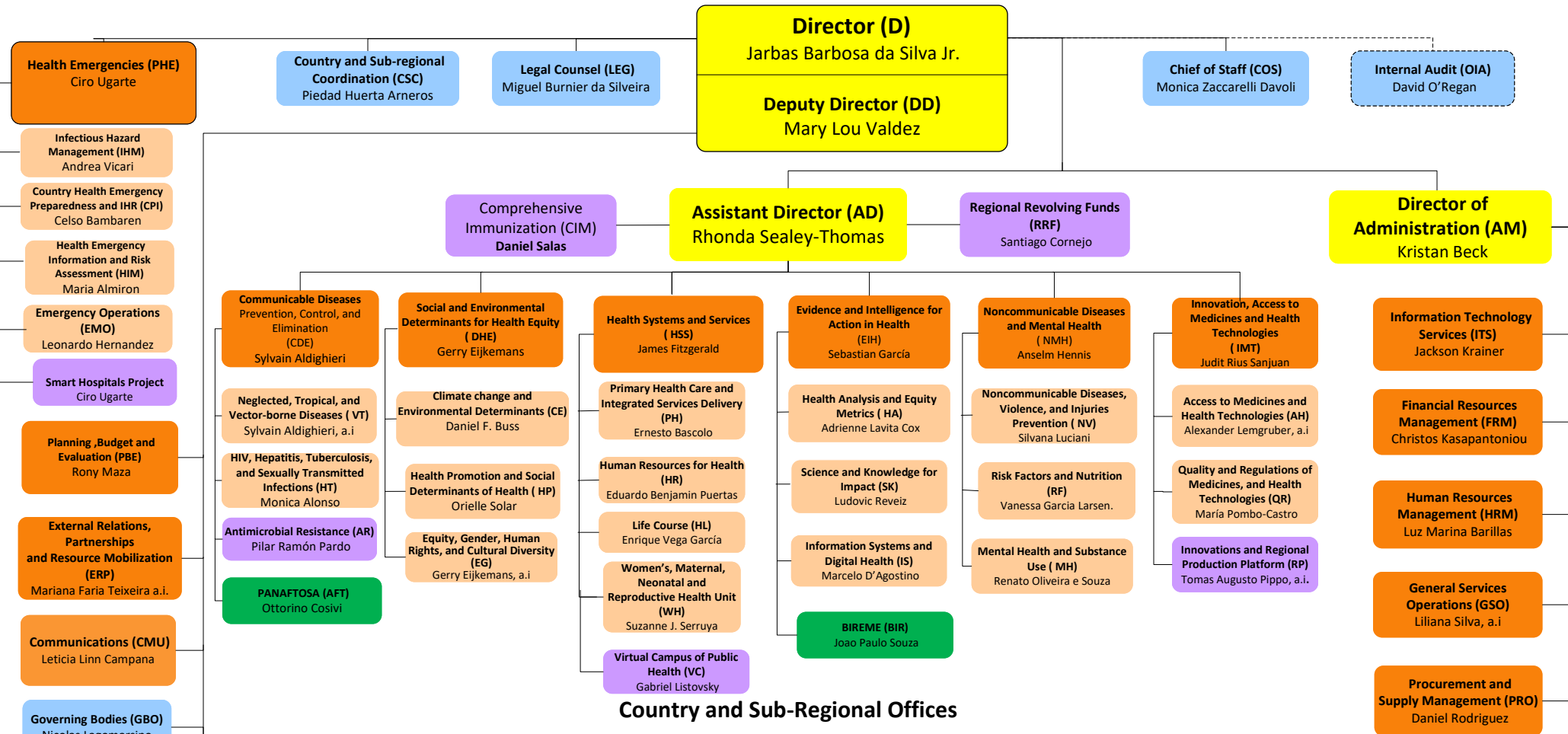


Organizational Chart of the Pan American Sanitary Bureau



Country and Sub-Regional Offices

ARGENTINA (ARG) Eva Jané-Llopis	BAHAMAS (BHS)* Eldonna Boisson *Also serves: • Turks & Caicos Islands	COLOMBIA (COL) Gina Tambini Gómez	HAITI (HTI) Oscar Martin Barreneche	PERU (PER) Maureen Birmingham
BARBADOS (BRB) & EASTERN CARIBBEAN COUNTRIES (ECC)* Amalia del Riego *Also serves: • Anguilla • Antigua and Barbuda • British Virgin Islands • Dominica • French Guiana • French St. Martin • Grenada • Guadeloupe • Martinique • Montserrat • St. Kitts and Nevis • St. Lucia • St. Vincent and the Grenadines	BELIZE (BLZ) Karen Lewis-Bell	COSTA RICA (CRI) Alfonso Tenorio Gnecco	HONDURAS (HND) Ana Solis Ortega	SURINAME (SUR) Yafflo W. Ouattara
	BOLIVIA (BOL) Alma Morales	CUBA (CUB) Mario Cruz Peñate	JAMAICA (JAM)* Ian Stein *Also serves: • Bermuda • Cayman Islands	TRINIDAD & TOBAGO (TTO)* Gabriel Vivas Francesconi *Also serves: • Aruba ,Bonaire, Curacao, Saba,Sint Eustatius,Sint Maarten
	BRAZIL (BRA) Cristian Morales Fuhrimann	DOMINICAN REPUBLIC (DOM) Alba María Ropero	MEXICO (MEX) Jose Gerardo Moya	URUGUAY (URY) Caroline Chang
	CARIBBEAN SUB-REGION (CRB)* Juan Manuel Sotelo, a.i *Based in Barbados	ECUADOR (ECU) Sonia Quezada Bolaños	NICARAGUA (NIC) Ana Elena Chévez	VENEZUELA (VEN) Armando De Negri, a.i
	CHILE (CHL) Giovanni Escalante	EL SALVADOR (SLV) Angel Manuel Alvarez, a.i	PANAMA (PAN) Ana Riviére Cinnamonod	
		GUATEMALA (GTM) Lilian Reneau, a.i	PARAGUAY (PRY) Marcelo Korc	
		GUYANA (GUY) Kim Eva Dickson		

