

PAHO Strategic Plan 2026-2031

At a Glance

Accelerating Together toward a Healthier Americas with Equity and Resilience

The Region we want to see: An equitable and resilient Americas

The Strategic Plan 2026–31 (SP26–31) of the Pan American Health Organization (PAHO) sets forth the strategic direction and desired health impacts and outcomes that the Pan American Sanitary Bureau (PASB) and Member States commit to collectively achieve by 2031. Recognizing the urgent need to move forward at an accelerated pace, it focuses on strengthening health systems based on primary health care (PHC) while recognizing the importance of promotion and prevention in the pursuit of universal access to health and enhancing health emergency preparedness and response.

Under the theme *Accelerating Together toward a Healthier Americas with Equity and Resilience*, it envisions a Region with improved health and well-being with health equity at the core.

Current situation and outlook

While the Region has made great strides in improving health and well-being in the past two decades, it continues to face a range of pressing health challenges including:

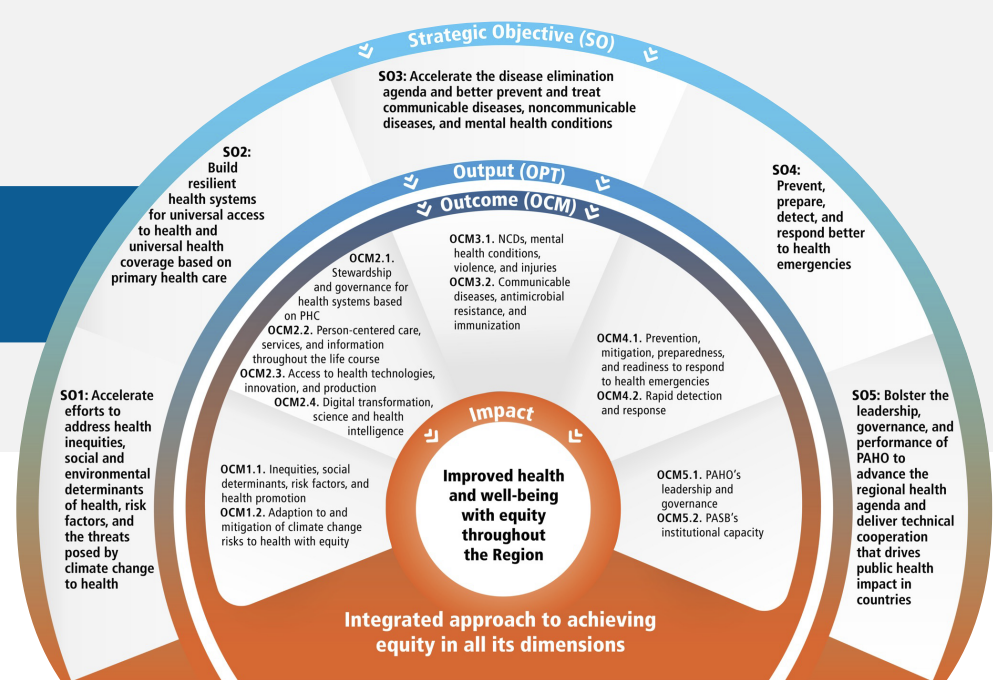
- Rising burden of noncommunicable diseases (NCDs)
- Gaps in the elimination of communicable diseases

- Climate-related health threats
- Health system challenges, such as health workforce shortages, barriers in access to care and health technologies, and fragmented information systems

In addition, there are numerous megatrends at play that are global in scope, but which have far-reaching implications for the Region, such as political, economic, and demographic shifts, environmental changes, and technological progress.

Delivering impact: Translating SP26-31 into action

The Results Framework is guided by collective priorities in areas where PAHO adds value, drives impact in countries, and addresses health inequities. It's anchored by its overarching impact goal of **improving health and well-being with equity throughout the Region**. By taking a more integrated approach with five high-level strategic objectives and twelve outcomes, the Plan facilitates inter-programmatic action designed to drive acceleration toward health goals and reduce health inequities. approach designed to drive acceleration toward health goals and reduce health inequities. The plan also outlines opportunities to innovate and modernize PAHO while enhancing efficiency, transparency, and accountability.



Proposed Results Framework: PAHO Strategic Plan 2026–2031

| | | | |
|-------------------|----------------------|----------|--------------------|
| 18 | 5 | 12 | 80 |
| Impact indicators | Strategic objectives | Outcomes | Outcome indicators |

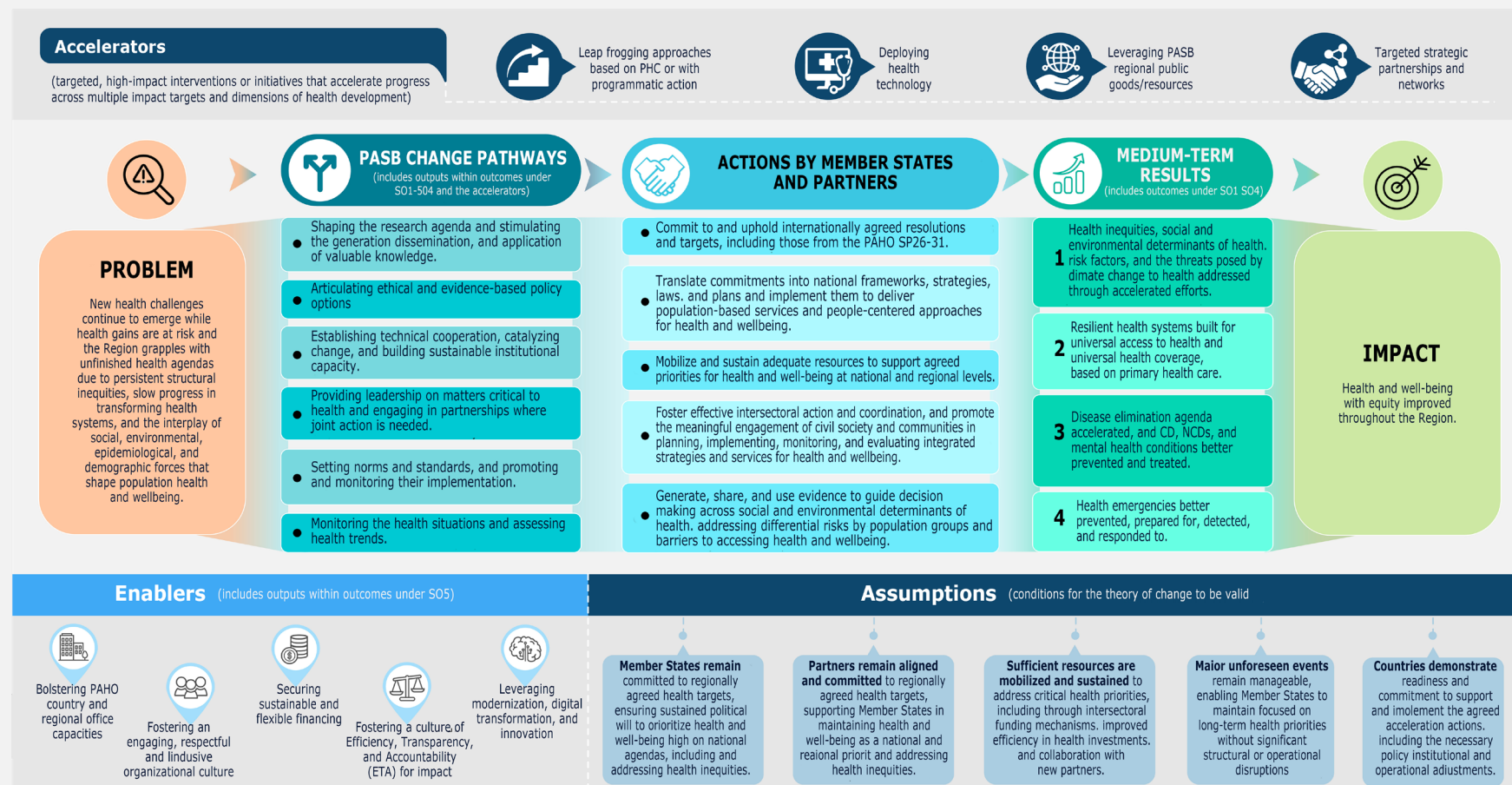
What's new?

The Strategic Plan is marked by several major shifts designed to catalyse action toward realizing the vision of the SP26–31. They include the following:

- The introduction of the integrated approach to achieving health equity in all its dimensions to allow the Organization to deliver technical cooperation that meaningfully addresses the underlying causes of health inequities.
- The inclusion of an updated Results-based Management (RBM) Framework that is more responsive to the changed global and regional landscape to make it more relevant to the Organization and its Member States.
- A more concise and integrated Results Framework and incorporation of theory of change.
- The introduction of accelerators, that will help pave the way to achieving the targets.
- Clarification of existing procedures for amending the Strategic Plan to improve the Organization's adaptability and capacity to respond to unforeseen and changing circumstances across the Region.

Bringing the Vision to Life: Strategic Plan 2026–2031 Theory of Change (ToC)

The ToC for the PAHO Strategic Plan 2026–2031 offers a strategic vision of how the Organization will contribute to improving health and well-being with equity throughout the Region of the Americas.



Process of development

The Plan was built through a participatory and inclusive approach in collaboration with Member States and other stakeholders, as well as the dedicated efforts of staff across all levels of the PASB.



PAHO's commitment

Monitoring, assessment, and reporting on the implementation of the SP26–31 and its related program budgets is an integral part of PAHO's Results-based Management Framework. The monitoring and assessment of the Strategic Plan will be conducted through established mechanisms in alignment with the Organization's RBM approach.