

Situation Report #20 – 21-25-November-2025

HIGHLIGHTS

- The Ministry of Health and Wellness (MOHW) **declared an outbreak of leptospirosis on 21 Nov 2025** following an increase in suspected and confirmed cases.
- **Two field hospitals are operational**; a third to commence during the week of 24 Nov. **Six primary-care EMT** installations are active across five worst-affected parishes and two adjoining parishes.
- Communications remain **intermittent** in affected parishes; alternate channels installed.
- As of 24 November 2025, a total of **39 partners** have reported support to the health sector through the Health Cluster—the largest multi-agency health deployment to Jamaica in recent hurricane responses. Partners include 21 international/local NGOs, 3 UN agencies, donors, academic institutions, and volunteer medical teams. The
- PAHO-supported platform for coordinating **health cluster partners** support is accessible at <https://shiny.paho-phe.org/melissa-partners/>
- The Emergency Medical Team (EMT) Virtual Medical Coordination and Information Cells (CICOM) continues to be in operation and accessible at <https://www.virtualcicom.org>.



IN NUMBERS

Approx. 2.8m (entire population)

Potentially exposed¹

45 confirmed deaths with 32 under investigation²

9 confirmed cases, 42 suspected cases of Leptospirosis³

17 Persons missing⁴

25% of population without electricity, 19% without water⁵

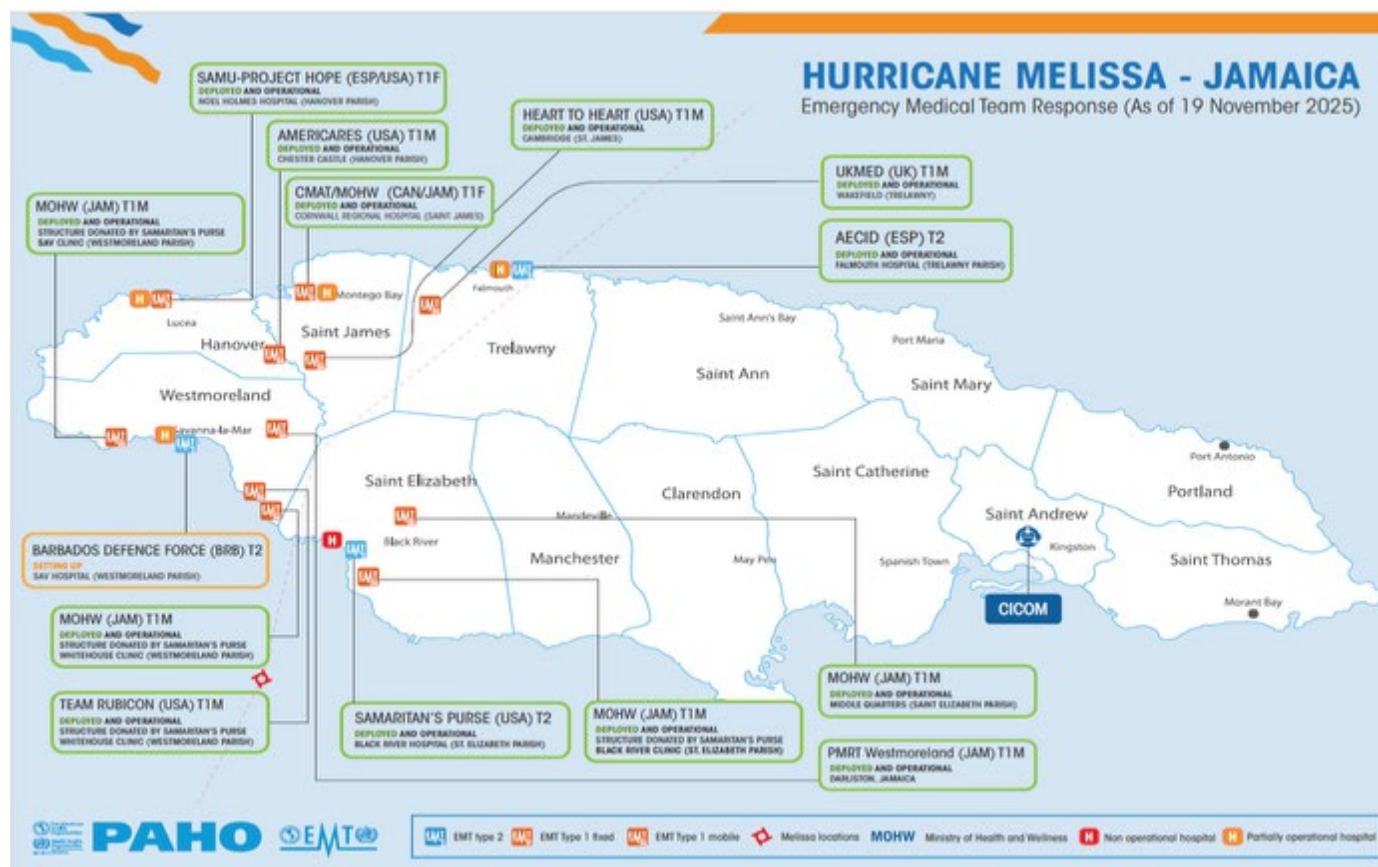
20 of 24 major hospitals open⁶

116 active shelters 1,445 persons, with daily fluctuations⁷

1: Statistical Institute of Jamaica data

2,3,4,5,6,7: NEOC Situation Report #27 (23 November 2025, 10:00 p.m.)

Graphic showing the PAHO-facilitated Emergency Medical Team response as of 19 November 2025



Emergency Medical Teams (EMTs) Coordination

EMTs updates:

- Deployed EMTs started **local staff training** on 21 Nov; **engineer training** begins 1 Dec.
- **EMT Type 2 Installations**
 - Installed on 4 Nov in Black River, St. Elizabeth – Samaritan's Purse
 - Second Type 2 installed on 6 Nov in Falmouth Public General Hospital – AECID (Spain)
 - Third Type 2 being installed in Savannah-La-Mar Hospital – Barbados Defence Force
- **Type 1 Fixed Centers**
 - Black River: installed 6 Nov - Samaritan's Purse & MOHW
 - Whitehouse, Westmoreland: installed 13 Nov – Team Rubicon
 - Cornwall Regional Hospital: installed 19 Nov – CMAT & MOHW
- **Field Hospitals**
 - Noel Holmes: now operational - SAMU
 - Planned installations at Savannah-La-Mar and Cornwall Regional Hospital

EMT Registration Totals

- Total Doctors Registered: 87
- Total Nurses Registered: 98
- Total Medical Staff Registered: 185
- Total Medical Staff in country: 223
- **Samaritan's Purse:** All 35 personnel fully registered.

- **Rubicon:** All 6 medical personnel registered; **one** doctor awaiting final certificate; 3 support staff exempt.
- **AECID (Spain):** 16 doctors + 22 nurses registered.
- **Sheba Field Hospital (Israel):** **processing halted** pending Ministry approval.

Health Services – Hospitals (Secondary Care)

Hospitals above capacity:

- **SERHA:** Bed occupancy ranges from 40% at Hope Institute to 100% at KPH, with ICU/HDU at full capacity. KPH is using the St. Joseph's field hospital (36 beds) to relieve overflow. BHC has 5 ICU patients, 2 suspected leptospirosis cases, and 2 PCR-confirmed leptospirosis cases from Linstead.
- **NERHA:** All four hospitals are on the grid, with high occupancy (up to >95%) and staffing >95%. At **SABRH**, there are 46 mothers, 18 neonates on the maternity ward and 14 NICU babies, including 3 transferred from Falmouth, with limited sterilization capacity (broiler down, relying on a small autoclave and external support).
- **WRHA:** Facilities remain under pressure - CRH is operating above capacity with heavy A&E load and tents for overflow; FPGH has 2 ICU patients, and critical cases include suspected leptospirosis with pulmonary hemorrhage.

Medical waste: Although collections have resumed, **significant backlogs of medical waste** remain in several hospitals (notably KPH, VJH, STH, BHC, HI), creating IPC risks and community tension and requiring **urgent reinforcement of collection and storage**.

Primary Health Care (PHC) Services

Damage and Loss Assessment: 101 health centers assessed:

- 84 facilities are offering partial or full services, 17 remain unable to offer services, and 18 are pending assessment.
- National estimated repair costs increased to \$20.76 billion JMD.
- All facilities retrofitted to PAHO Smart Standards sustained minimal or no damage.
- St. Elizabeth Parish HEOC relocated to Santa Cruz Health Centre (a Smart health facility).
- Several facilities in SRHA and WRHA require full reconstruction to resume safe services.
- PHC gaps continue to drive avoidable hospital demand and delays in care of persons with NCDs.

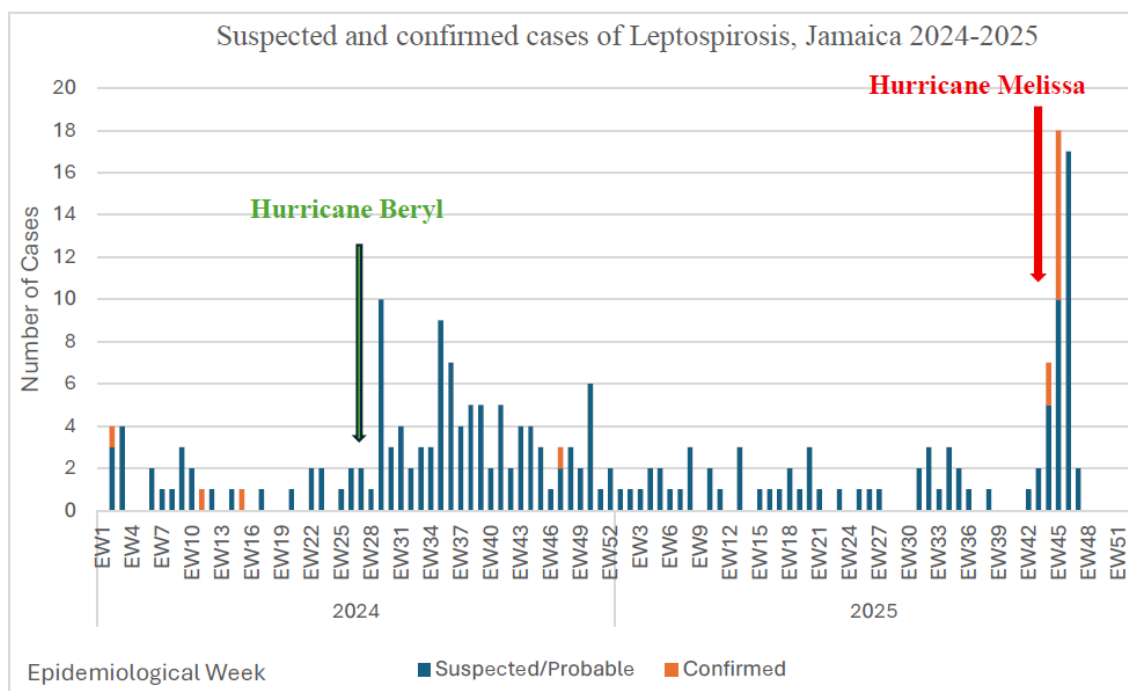
Service Delivery:

- 5 field hospitals will soon be operational; mobile primary care and pharmacy services continue in high-impact parishes.
- Field hospitals provide primary and inpatient care, including operating theatre capabilities.
- Mobile clinics and community-based primary care services are active, especially in the most affected parishes.
- Special staffing arrangements and rotations coordinated by the Medical Association of Jamaica support impacted areas.

HRH:

- Over 2,000 healthcare workers adversely impacted.
- Staffing levels in health facilities are generally adequate, with some challenges in communication and transportation.
- HRH surge has been realized through volunteer health professionals, including international

- **Sentinel Surveillance:** All sentinel sites remain fully operational and continue to submit reports as scheduled.
- **Outbreak Detection:**
On 21 Nov, the MOHW declared that there an outbreak of leptospirosis following the passage of Hurricane Melissa.



Leptospirosis Cases by Epidemiological Week, Jamaica, 2024 to 2025, as of 22 November 2025. Source: MOHW, 23 Nov 2025.

Parish	Total Suspected/ Probable/Confirmed	Total Confirmed	Total Deaths
Saint James	17	4	2
Saint Ann	8	2	2
Saint Elizabeth	6	0	2
Hanover	3	1	2
Trelawny	3	0	0
Westmoreland	2	1	1
Saint Mary	1	0	0
Saint Catherine	1	1	0
Manchester	1	0	0
Grand Total	42	9	9

Leptospirosis Cases by Epidemiological Week, Jamaica, 2024 to 2025, as of 22 November 2025. Source: MOHW, 23 Nov 2025.

PUBLIC HEALTH RESPONSE

- Enhanced clinical and syndromic surveillance for leptospirosis implemented across all health centres, hospitals, tourist establishments, and shelters.
- Clinician sensitization on the clinical management of leptospirosis and tetanus conducted via MOHW-led webinar.
- Rapid response teams deployed to investigate any reported clusters or deaths.
- Ongoing discussion on provision of doxycycline chemoprophylaxis for high-risk groups, including cleanup workers, rescuers, and farmers.
- Intensified rodent control and waste management activities in flood-affected communities.
- Health promotion and community education strengthened through local media, press releases, and MOHW press conferences.
- Coordination with Veterinary Public Health and local Municipal Corporations to improve animal inspection, sanitation control, potable water availability, and garbage collection.

Syndromic surveillance:

- The WRHA recorded increases in respiratory and gastrointestinal syndromes, particularly fever with cough and watery diarrhea. These rises may be linked to water quality challenges, and environmental exposures following Hurricane Melissa.
- No severe or alarming syndromic spikes were detected; however, the upward trends in diarrheal diseases and respiratory complaints warrant continued surveillance, health messaging, and environmental health interventions.



MENTAL HEALTH AND PSYCHOSOCIAL SUPPORT

- MHPSS services are being delivered by multiple organizations at national and community levels, including the hardest-hit areas, to support displaced populations and health-care workers.
- As of 25 November 2025, the 4Ws (Who is Where, When doing What in Mental Health and Psychosocial Support) have been analyzed amongst 12 partners. Only one Government agency analyzed. The majority of partners targeted community members (57.1%) (n=8) and 50% targeted caregivers (n=7).
- 156 persons have been trained thus far from the MOHW, PAHO, UWI and MOE.
- As of 25 November 2025, 1,138 persons in the affected communities have been offered some form of MHPSS, 18% are children and 18% are Health Care Workers and First Responders.
- The MHPSS subcluster group is active, allowing coordination at the service delivery levels.



LABORATORY SERVICES

- Laboratory services across the four hospitals remain variably functional following hurricane related infrastructure and equipment damage. While some critical operations have been restored, all facilities continue to experience reduced capacity.
- Outpatient testing is restricted primarily to antenatal care, oncology patients, and urgent requests. CRH maintains the highest operational capability, providing CBC, chemistry, blood bank services, microbiology, immunology, and cytology; however, special chemistry remains offline due to water and infrastructure issues.
- Persistent challenges including leaks, loss of internet affecting the LIS, and lack of printing limit CRH's ability to support other hospitals.
- At NHH, full laboratory services are available. SPGH can conduct manual CBCs, blood banking tests, coagulation studies, and blood cultures. FPGH is operating with significantly reduced capacity, offering only blood grouping, DCT, crossmatch, HIV, and syphilis testing.
- Hematology has been suspended, with samples redirected to CRH, and chemistry services are being referred to SABRH due to irreparable equipment damage



RISK COMMUNICATIONS AND COMMUNITY ENGAGEMENT

- Dissemination of MHPSS messaging is ongoing.
- The Ministry of Health and Wellness continues to disseminate messages to the public on safeguarding health post Hurricane Melissa, including messages on preventing mosquitos and leptospirosis.
- Some health regions have begun disseminating public health messages on water treatment and prevention of gastroenteritis, leptospirosis and mosquitoes. Town crier/wayside announcements are being used in some areas.



NUTRITION

- The MLSS, ODPEM, and relief agencies are distributing food packages and are also providing some hot meals.
- Nutrition services in primary care facilities have been impacted. MOHW regions are including nutrition counselling, breastfeeding and infant feeding in nutrition education sessions being conducted in community settings.



INFRASTRUCTURE

Update on Infrastructure

- PAHO virtual Map with status of health facilities: <https://who.maps.arcgis.com/apps/instant/sidebar/index.html?appid=9226e33620e5458290a820b60f1b3e27>. The map also includes layers showing hurricane wind strength and path, as well as population density.



WASH & ENVIROMENTAL HEALTH

- The region continues to face significant challenges in water supply. Of the 54 National Water Commission (NWC) systems, only 13 are currently fully operational. While chlorine residual levels are generally satisfactory where water is available, several major systems in St. James remain offline, including Comfort Hall, Dantrouth, Blue Hole, and Mafoota. In Westmoreland, crude chlorination methods are being applied due to persistent pump failures, highlighting the need for urgent infrastructure repairs.
- Red Cross has installed a new water purification system at Cambridge (St James). The proposed system for Ulster Spring (Trelawny) is pending installation. Complaint investigations in St. James resulted in corrective action at Tara Estate to ensure safer water for affected communities.
- Several treatment facilities for wastewater remain non-functional, especially in Westmoreland, affecting markets and housing schemes. St. James plants (Providence Heights, Norwood, Catherine Hall) face power outages and blocked laterals, while Trelawny plants (Vanzieland, Florence Hall, Holland Estate) remain unsatisfactory pending water and electricity restoration.

Water quality control was carried out for Trelawny and Westmoreland parishes:

- Trelawny: Of 23 NWC supplies inspected, 7 are functional with chlorine residual detected in all 7 samples. Of 21 Municipal Corporation supplies, 3 supplies were functional and visited, collecting 3 samples (1 with chlorine residual). One private supply was visited, and chlorine residual was confirmed in its single sample.
- Westmoreland: 6 NWC supplies are functional, with 15 samples collected and chlorine residual present in 13. 1 Municipal Corporation supply was visited, with no chlorine residual found in its sample. Two private supplies were sampled, and both showed chlorine residual.

Environmental Health

- Piped water has been partially restored in Trelawny and St. James, but reliance on trucked water remains high in Westmoreland.
- Mosquito and rodent activity are elevated in all parishes, posing increased public health risks.
- NSWMA is conducting clean-up operations in areas like West Green (St. James), where 90 premises were found unsatisfactory due to accumulated debris.



- **Environmental health assessments** covered 37 premises in Trelawny, 71 in St. James, and 237 in Westmoreland. In food safety inspections, 32 establishments were checked in St. James and 90 in Westmoreland, where 75 were closed due to structural damage and lack of basic facilities. Unsatisfactory conditions included pest infestation in St. James and inadequate water for handwashing, exposed openings, and absence of toilets in Westmoreland. A combined over 100 kg and 200+ liters of spoiled food items and beverages were condemned, affecting shops, restaurants, supermarkets, meat shops, and wholesalers.
- **Vector control** initiatives continue ongoing, particularly in this period, in Westmoreland and St. James.
 - **Westmoreland:** 15 areas monitored with 5 high-risk zones; 1,513 premises inspected, with 142 positive, and 3,093 containers checked (341 positive, all treated). Aedes Index at 9.4%, Breteau Index 22, and Container Index 11%. Vector control included larviciding in 15 communities, oiling 16 breeding sites, fogging 7 areas, and treating flooded communities (McNeil Land, Galloway).
 - **St. James:** 6 areas monitored with 6 high-risk zones; 1,453 premises inspected, with 501 positive, and 11,141 containers checked (1,872 positive, 1,869 treated). Aedes Index at 34.5%, Breteau Index 129, and Container Index 16.8%. Vector control included larviciding in 6 communities, fogging 25 areas, and no flooded communities.
 - A **fogging/spraying** schedule is proposed for the next week, covering areas in Trelawny, St James, Hanover and Westmoreland.



SHELTERS

- According to ODPEM, **113 of 881 Emergency Shelters remain activated** islandwide, with occupancy of 1441 persons. Data includes inputs from Manchester, St Elizabeth, Westmoreland, St Ann, Trelawny, St James and Hanover parishes (i.e. 7 out of 14). Some displaced households are sheltering in churches and other facilities. Shelter updates are ongoing.
- A general reduction in the number of shelters activated and total occupancy is expected. Also, fluctuations are likely due to ongoing communication challenges and persons who leave and turn up at shelters ad hoc daily.



HEALTH NEEDS

- **Support for the rapid restoration of essential services**, including debris removal, electricity, water, and communications.
- **Maintenance of life-saving health services** through field hospitals, emergency repairs, deployment of EMTs, provision of medical supplies, generators, WASH support, and essential medicines.
- **Enhance epi-surveillance system** to early detect and respond to outbreaks and epidemic prone diseases.
- **Provision of mental health and psychosocial support (MHPSS)** for patients, health workers, and affected communities.
- **Rehabilitation and repair of five major hospitals and multiple health facilities** across the western and southern regions to restore full functionality and service delivery.



RESPONSE

GOVERNMENT RESPONSE:

- The Preliminary National Needs List published by ODPEM, including detailed health needs, is available ODPEM at <https://supportjamaica.gov.jm/needs>. The list is based on support for response and recovery for an estimated 400,000 people affected by the hurricane.

PAHO RESPONSE:

- PAHO provided reagents at the national laboratory for confirmation of leptospirosis.
- Procurement of roof materials to 7 damaged primary health centres. PAHO is collaborating with MSF to get contractors hired, oversee logistics and supervise on-site repairs.

- PAHO, in collaboration with MOHW and UNICEF, is launching a new phase of WASH assessments to cover the 97 remaining health facilities, aiming to strengthen resilience and maintain safe conditions in health institutions after recent disruption.
- Purchasing 9,750 mosquito nets and 10,000 drum covers to be distributed within MOHW health facilities.
- PAHO is purchasing 9750 mosquito nets and 10000 drum covers to be distributed within MOHW health facilities.
- PAHO is working closely with Team Rubicon during field assessments in Westmoreland, with a particular focus on Savanna-la-Mar Hospital and nearby health facilities. Joint teams visited the hospital to review service availability, patient flow, and critical gaps in infrastructure, WASH, supplies, and staffing.

PAHO Deployments:

- Members of the PAHO Regional Response Team are currently supporting incident management, health cluster support coordination, EMT coordination, environmental health, MHPSS, logistics, and emergency administration.

Photos



PAHO working closely with Team Rubicon during field assessments in Westmoreland, with a particular focus on Savanna-la-Mar Hospital and nearby health facilities.



Replacement of damaged computers used for hospital operations and surveillance reporting, Falmouth General Hospital.