

HURRICANE MELISSA

Jamaica

PAHO



Pan American
Health
Organization



World Health
Organization
Regional Office for the Americas

Situation Report #14 - 11-November-2025

HIGHLIGHTS

- **Landfall:** Category 5 hurricane at 12:00 on **28 Oct 2025**, south coast near **New Hope, Westmoreland**; catastrophic damage in the **Southern** and **Western** Regions.
- Two weeks after Hurricane Melissa, recovery efforts continue across Jamaica, with **45 confirmed deaths and nearly 1.6 million people affected**.
- CICOM remains operational from the HEOC, coordinating offers and deployments of national and international EMTs. Procedures are being finalized to expedite clinician license verification and customs clearance for medical supplies and equipment.
- **Barbados Defence Force — EMT Type 2:** In transit to Jamaica; expected to be ready to deploy on arrival.
- **SAMU — EMT Type 1 (Fixed):** In the field, preparing to set up its mobile hospital.
- **Americares / Heart to Heart / UK-MED — EMT Type 1 (Mobile):** Moving to assigned locations.
- Persistent flooding in low-lying coastal zones due to rising groundwater levels continues to delay recovery operations.
- The fifth meeting of the Health Cluster Coordination Group was held on 11 November 2025, where PAHO serves as Co-Chair alongside the MOHW. The MOHW Chief Medical Officer attended in person, expressed thanks for the support of PAHO and partners and provided a quick update.
- PAHO supported the transportation of a **Reefer Container** (refrigerated container) to the National Health Fund. Initially intended for Santa Cruz Health Centre, it will instead be installed at **Mandeville Regional Hospital** due to power issues, to support the cold storage of pharmaceuticals for St. Elizabeth.
- PAHO virtual Map with layers:
<https://who.maps.arcgis.com/apps/instant/sidebar/index.html?appid=9226e33620e5458290a820b60f1b3e27> The map also includes layers showing hurricane wind strength and path, as well as population density.
- The activation level of the National Emergency Operations Centre (NEOC) remains at Level 3.

IN NUMBERS

Approx. 2.8m (entire population)

Potentially exposed¹

45 Deaths²

197 Injuries treated in A&E hospital departments across all 4 health regions³

N/A Missing⁴

71 Evacuated⁵

5 Major hospitals⁶ severely impacted, widespread damage across Western and Southern Regions

1K people in 88 active shelters⁷

1: Statistical Institute of Jamaica data

2: JISTV https://m.youtube.com/watch?v=seHnLvp_C7g

3,4,5,6: Ministry of Health and Wellness HEOC report #19 (10 November 2025, 8:00 p.m.)

7: OCHA Jamaica: Hurricane Melissa - Situation Report No. 4 (as of 11 November)

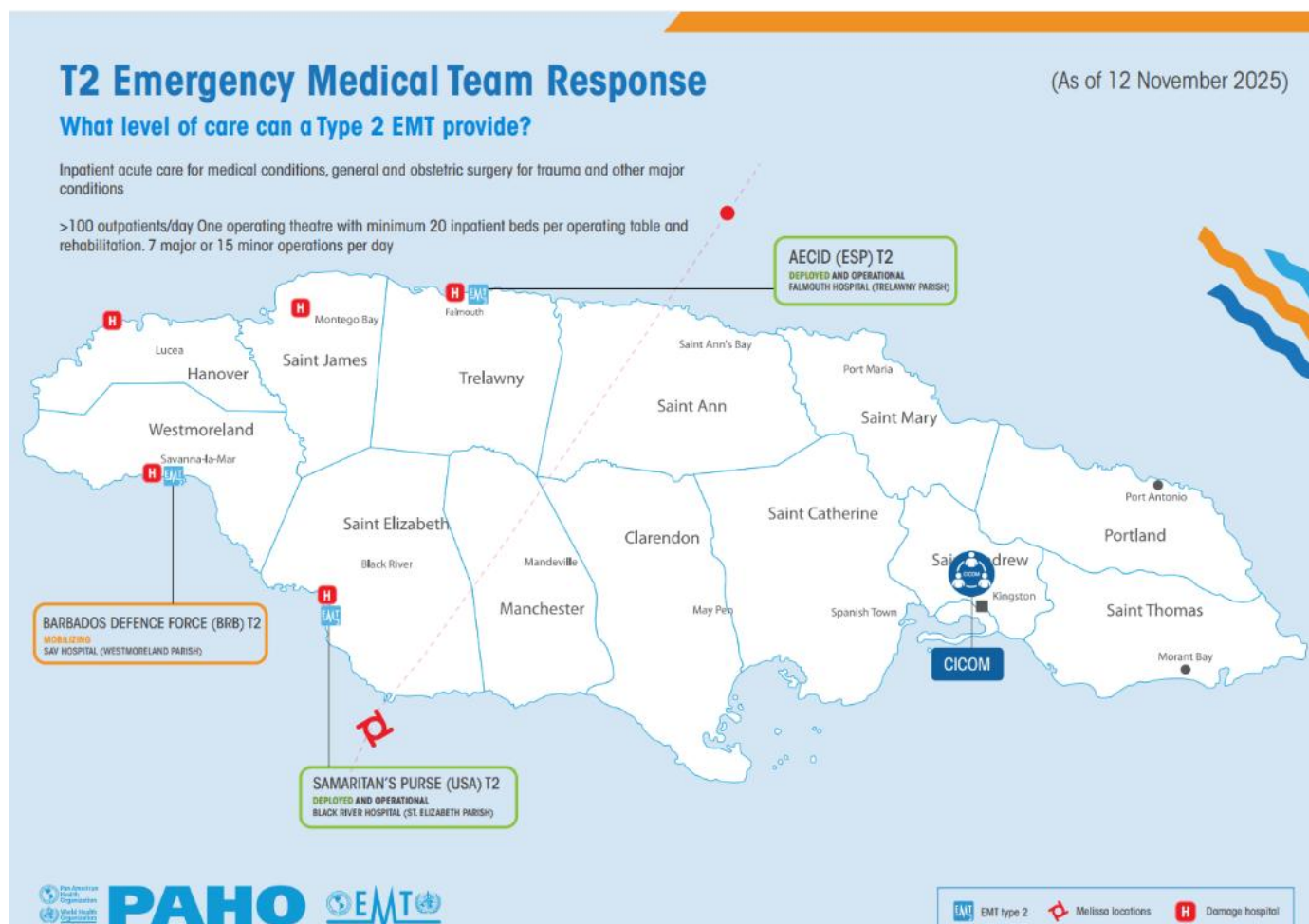


Pan American
Health
Organization



World Health
Organization
REGIONAL OFFICE FOR THE Americas

Graphic showing the location of the PAHO-facilitated Emergency Medical Team response



- **Emergency Medical Teams (EMTs) Coordination**
CICOM continues to operate from the HEOC, coordinating the offers and deployments of both national and international Emergency Medical Teams (EMTs). It is also finalizing procedures to facilitate medical teams' **license validation** and **customs clearance** for their supplies and equipment.
- The **AECID Type 2 EMT** remains based at *Falmouth Hospital*, while the **Samaritan's Purse Type 2 EMT** continues to support *Black River Hospital*. Both teams are **providing patient care** as recovery work progresses in the affected facilities.
- The **Barbados Defence Force Type 2 EMT** is en route to Jamaica and expected to be operational shortly. Meanwhile, the **SAMU Type 1 Fixed EMT** is already in the field, preparing to establish its mobile hospital. Additionally, three **Type 1 Mobile EMTs**—*Americares*, *Heart to Heart*, and *UK-MED*—are mobilizing to their assigned locations.
- Two more teams, *Team Rubicon* and *CMAT*, have completed their mission authorizations and are ready for immediate deployment.
- The **Ministry of Health and Wellness (MOHW)**, with support from **PAHO/WHO**, continues efforts to **restore essential health services** across the affected parishes.
- **PAHO** has provided **trauma backpacks, emergency medical kits, generators, and water-testing kits** to strengthen the MOHW's **emergency response and surveillance capacity**. Technical teams are also conducting **assessments of SMART health facilities** to identify priority repairs and ensure the **continuity of care**.

Service Delivery- Primary Health Care:

National: 47 primary care facilities unable to offer services (as of 9 Nov.).

SERHA:

- **St. Catherine:** 24 HCs open.
- **Kingston & St. Andrew (KSA):** 34/40 open; 6 closed.
- **St. Thomas:** 13 open; 3 closed (2 pre-existing).
- **Mandeville:** Smart Health Centre is in use.

SRHA

- **Clarendon:** 29 HCs open (3 partial).
- **Manchester:** 13/18 open; 2 under renovation, 3 partial.
- **St. Elizabeth:** 9/25 open (emergency services only); 16 closed.
- **Santa Cruz Smart Health Centre:** Fully functional

WRHA

- **St. James:** Granville & Montego Bay Type 5 HCs operational.
- **Hanover:** All 6 HCs open (curative; MCH).
- **Westmoreland:** 7 HCs open; field HC to be set up in Whitehouse.
- **Trelawny:** 4 HCs open.

NERHA: 33/36 facilities open

- **St Ann's Bay:** only damage to the walkway roof and fencing. The main building undamaged.

Secondary Care:

WRHA:

- **Cornwall Regional Hospital (St. James):** 250-bed facility **operational** with **196 inpatients** despite structural damage and overcrowding. Emergency surgeries, dialysis, and radiotherapy have resumed, though major laboratory equipment remains damaged. The hospital sustained **roof damage 50%**; PAHO supplied materials for the roof replacement while Doctors Without Borders and the private sector are supporting ongoing repairs since 8 November. **Water and electricity** have been partially restored to CRH; water pressure remains low.
- **Falmouth Public General Hospital (Trelawny):** **Partially functional**, 130-bed facility with **60-70 % roof damage** and flooding from storm surge. Only **one operating theatre** on standby, no AC. **PAHO**, in coordination with **Americares**, the **UK military**, and **WRHA**, supported **clean-up and emergency repairs** to the laundry, dental, kitchen, and COVID buildings, and the laboratory is partially functional. EMT Type 2 (AECID) was installed to support services.
- **Noel Holmes Hospital (Hanover):** Functional; laboratory and pharmacy operational.
- **Savanna-La-Mar Public General Hospital (Westmoreland):** The hospital remains **partially operational** following **significant loss of medical equipment, water leaks, and severe damage to staff housing**. Repairs are planned for staff housing and the isolation and outpatient wards. **Team Rubicon** is supporting outpatient and emergency services as well as clean-up.

SRHA

- **Black River Hospital (St. Elizabeth):** Sustained **catastrophic storm-surge damage**, with all buildings lost except the **A&E**, where staff are currently sheltering. **NHF** continues dispensing medicines daily from a **refrigerated container**. **PAHO's damage and WASH assessment** informed the **MOHW's request** to the **UK High Commission** for military support in debris removal. **Samaritan's Purse EMT Type 2** began operations last week and is **currently treating patients**. The facility remains **non-functional**. The laboratory was destroyed, and the operating theatre is unusable.
- **Mandeville Regional Hospital (Manchester):** Over capacity (162%); emergency services only.
- **May Pen Hospital (Clarendon):** Over capacity (146%); emergency services only.

SERHA

- **Kingston Public Hospital:** Full operation; roof leaks; ICU 100% occupancy; general wards 107%.
- **Spanish Town Hospital:** Full operation; HVAC issues in A&E; circuit board repairs ongoing.

- **Bustamante Hospital for Children:** Full operation; ICU full. *(no new information)*
- **UHWI:** Full operation; water shortages persist. *(no new information)*

NERHA

- **St. Ann's Bay Regional Hospital:** 85% occupancy; roof damage. At **St Ann's Bay Regional Hospital**, the missing dietary-block roof is being replaced, and the Top Nurses' Home will temporarily house dietary services once gas piping is completed.
- **Port Maria Hospital:** Operating on generator; NWC restored; 5-day fuel reserve.
- **Annotto Bay Hospital:** Leak detected in water system; continues to receive **trucked water** due to NWC disruption. generator for radiology; elective surgeries on hold until JPS returns
- **Port Antonio Hospital** and the Health Department have reconnected to **JPS power**

Bed occupancy:

- National Average: 70% (excluding Black River Hospital and 3 WRHA hospitals)
- By Region:
 - SERHA: 70%
 - SRHA: 122%
 - NERHA: 64%
 - WRHA: 62% (Cornwall Regional Hospital 74% and Noel Holmes 52%)

Hospitals Over Capacity:

- Mandeville Regional Hospital (SRHA): 111 patients above capacity (162%)
- May Pen Hospital (SHRA): 39 patients above capacity (146%)
- Kingston Public Hospital (SEHRA): 35 patients above capacity
- Spanish Town Hospital (SERHA): At capacity or slightly above (bed occupancy 87%, but A&E overcrowded)

Staffing:

- National: 93% - Excludes Black River Hospital (SRHA) and Savanna-la-Mar and Falmouth (WRHA)
- By Region:
 - SERHA: 94%
 - SRHA: 91% (excluding Black River Hospital)
 - NERHA: 97%
 - WRHA: 91% (Noel Holmes, Cornwall Regional)

Surveillance

- As of 11 November, at 10:00 a.m. the number of confirmed deaths associated with Hurricane Melissa has increased to 45, as reported by the Minister of Education, Skills, Youth and Information during the Special Press Briefing. The deaths were investigated and confirmed by the Jamaica Constabulary Force in collaboration with the Jamaica Defense Force.²
- As of 8 November, at 10pm, there were 197 cumulative injuries reported for people treated in the Accident & Emergency Department of hospitals in all four regions.
- As of 10 November 2025, there were no adverse health conditions reported for 1755 persons in shelter. Surveillance in shelters is ongoing.
- Challenges with communication and access to affected communities persist, limiting reporting of the accurate number of deaths and injuries.

Mental Health and Psychosocial Support

- The **4Ws reporting form** (*Who is providing services, Where, When, and What activities*) has been circulated. As of 11 November 2025, six partner organizations have completed and submitted their responses.

² JISTV https://m.youtube.com/watch?v=seHnLvp_C7g

- **Stakeholder meetings** were held on 10 and 11 November 2025 between **PAHO** and the **Ministry of Health & Wellness (MOHW)** to coordinate actions and provide **support for health care workers** involved in the response.

Laboratory Services

The National Laboratory Services (NLS) remain fully operational for the National Public Health Laboratory (NPHL) and the National Blood Transfusion Services (NBTS). NLS continue to rely on the HEOC for transportation services.

- In WRHA, there has been no reported change to disruptions in laboratory services at the major hospitals damaged. Support is being provided by non-affected laboratories to ensure continuity of services.
- SRHA reports that laboratory services across the region have adequate staffing and sufficient reagents available. All equipment remains functional. A field hospital that has been set up in Black River is equipped with a laboratory.
- NLS are continuously monitoring the supply of blood and blood products.

Risk Communication and Community Engagement

- As of 11 November 2025, the MOHW has developed a mental health communication strategy.
- **Press Releases and PSAs:** Over 15 press releases and public service announcements, covering topics such as facility readiness, mental health, vector control, food safety, blood donation, and post-hurricane recovery.
- **Radio Broadcasts:** PSAs on health centre reopening, injury prevention, food safety, mental health, and vector control disseminated through major national radio stations (*IRIE FM, RJR 94 FM, Mello FM, Power 106 FM, Love 101 FM*) via the Jamaica Information Service (JIS).
- **Media Engagement:** Multiple TV and radio interviews conducted with the Minister of Health.



HEALTH RISK ASSESSMENT

- There is a heightened risk of transmission of respiratory, vector-borne, food-borne and water-borne diseases due to the impacts on running water, pooling of water, lack of electricity, displacement of people, and disruptions to health interventions and service provision. Health risk assessments are ongoing and/or planned to start shortly. MOHW continues to closely monitor the response of surveillance and laboratory systems and impacts on continuity of health services and case management.
- MOHW continues to monitor burnout of staff and impacts on health infrastructure to inform staff wellbeing and service continuity during the emergency response period



INFRASTRUCTURE

Infrastructure - Structural Damages in the most affected parishes, namely St. James, Trelawny, Westmoreland, Hanover and St. Elizabeth

i. Falmouth General Hospital (Trelawny)

- Suffered catastrophic damage, losing approximately 60–70% of its roof.
- The only structurally standing block is the operating theatre area (previously used during the Cornwall Regional relocation), though it sustained damage, including shifted AC units and leaks.
- One theatre remains on standby for emergency cases, operating without air-conditioning.
- The maternity ward roof remained in place but leaked. The surgical block and pediatric ward lost their roofs.
- Dietary and storage areas were destroyed, forcing staff to cook outdoors while maintaining sanitation for staff and patients.
- The A&E block completely lost its roof. Pharmacy services remain partially active.

Falmouth Health Centre

- Lost its roof; staff managed to save most records.
- 31 clients served (23 curative, 5 family planning, 1 postnatal, 1 antenatal, 1 BCG vaccination).
- OPD has light but needs consistent water supply and a cooling system.
- Requires hand sanitizers and a tent for the waiting area.
- Vaccine storage remains secure.

Other Trelawny Health Facilities:

- **Wakefield Health Centre:** Extensive roof damage; structure tilted; no service.
- **Bounty Hall Health Centre:** Roof and cottage destroyed; no service.
- **Deeside Health Centre:** Roof destroyed; roads impassable; no service.
- **Bunker's Hill Health Centre:** Road impassable but no structural damage.
- **Sherwood Health Centre:** Roof of concrete tank gone; no other damages; no clinic today; no electricity or internet; using tank water.
- **Rio Bueno Health Centre:** Fence damaged; building intact; no utilities; using tank water.
- **Stewart Town Health Centre:** Roof severely damaged.
- **Jackson Town Health Centre:** Roof destroyed; needs tarpaulin; no utilities.
- **Duanvale Health Centre:** Roof severely damaged; no service.
- **Ulster Spring Health Centre:** Roof damaged in several areas.
- **Warsop Health Centre:** Roof destroyed; no service.
- **Wait-a-Bit Health Centre:** Roof destroyed; no service.

ii. Cornwall Regional Hospital (St. James)

- Remains operational but under severe strain.
- A&E is full, with nowhere to transfer admitted patients.
- Requires a field hospital for additional ward space and surgical support.

Associated St. James Facilities:

- **Mount Carey and Cambridge Health Centres:** Facilities destroyed.
- **Type V, Salt Spring, Roehampton, Adelphi, Catherine Hall Health Centres:** Flood, roof, and structural damage affecting equipment and furnishings.
- **Somerton, Goodwill, Maroon Town, Lottery, Tower Hill, Johns Hall, Garlands, Springfield Health Centres:** Major roof and infrastructure damage.

iii. Noel Holmes Hospital (Hanover)

- Remains functional; A&E operational.
- Patients are being housed in corridors and a former isolation unit.
- Roof damage on male ward and outpatient block managed with tarpaulin due to solid wall construction.

Associated Hanover Facilities:

- **Lucea, Ramble, Chester Castle Health Centres:** Facilities destroyed or severely compromised.
- **Hopewell, Sandy Bay, Maryland, Montpelier, Grange Kendall, Nyerere Health Centres:** Roof, infrastructure, and furnishings damaged.
- **Cave Valley Health Centre:** Roof and infrastructure damage with water intrusion.
- **Hanover Health Department:** Roof and infrastructure affected.

iv. Savanna-la-Mar Public General Hospital (Westmoreland)

- Outpatient structure destroyed, but inpatient services continue.
- Leaking areas are being managed, with staff maintaining clean conditions.
- The former COVID-19 isolation area requires restoration and could accommodate over 20 patients once repaired.

Associated Westmoreland Facilities:

- **Savanna-la-Mar Health Centre:** Roof, partitions, and equipment destroyed.
- **Westmoreland Health Department:** Roof and water damage.
- **Whitehouse, Petersfield, Darliston Health Centres:** Severe roofing, structural, and equipment losses.
- **Bluefields, Negril Health Centres:** Roof and structural damage due to water intrusion.
- **Baulk, New Works, Beeston Spring, St. Leonards, Lambs River, Birkshire, Williamsfield, Bethel Town, Cornwall Mountain Health Centres:** Roof, infrastructure, and furnishing damage.
- **Georges Plain Health Centre:** Minor roof and fence damage.

v. Black River Hospital (St. Elizabeth)

- Currently operating only its A&E services on the ground floor.
- Both inpatient blocks lost their roofs, including the recently refurbished surgical block.
- Laboratory completely destroyed.
- Former operating theatre and administrative buildings lost roofs and are unusable.
- Requires a field hospital with an operating theatre, wards, and laboratory capacity.

Water:

- SEHRA:
 - St. Catherine: 13 HC remain without access to NWC water.
 - Kingston and St. Andrew: 5 HCs are still without water: Seaview Gardens, Sunrise, Gordon Town, Dallas, Lawrence Tavern
 - St. Thomas: 7 HCs are still without water: Cedar Valley, Font Hill, Hagley Gap, Llandewey, Rowlandsfield, Seaforth, White Hall
- SRHA:
 - Clarendon:
 - 30/32 HC facilities (93%) recuperated access to water, most HC operating on tanks.
 - Croftshill and Rock River HC have no water nor tanks.
 - Manchester: All facilities depend on water tank.
 - St. Elizabeth:
 - 23/25 centres are on tank.
 - 2 HCs have damaged tanks.
- WRHA: Adequate reserves at most hospitals; private trucking contracts in place. No updates.
- NERHA: 8 HCs in Portland without water; Annotto Bay leak detected.

Communication:

- Coordination notes for Emergency Medical Teams will rely on PAHO's licensed virtual platform (Virtual CICOM).
- **216 VHF radios** installed under the **JICA–ODPEM DECOM Project** across MOHW facilities, including **42 base stations, 102 mobile, and 72 handheld units**.
- **80% of base stations operational**, with follow-up underway for mobile and handheld units showing intermittent response.
- **Daily radio checks** conducted from the **HEOC** to all parishes to ensure connectivity and system readiness.
- PAHO virtual Map with layers:
<https://who.maps.arcgis.com/apps/instant/sidebar/index.html?appid=9226e33620e5458290a820b60f1b3e27>



WASH

WASH:

- Water supply assessments performed in some parishes in SERHA and SRHA showed mixed results.
 - In Kingston and St. Andrew, most supplies assessed by the National Water Commission (84 out of 104 assessed supplies) and private providers (13 out of 15) were satisfactory, while municipal sources had a few issues (7 out of 10).
 - In St. Thomas, the NWC assessed 3 supplies (1 satisfactory, 2 unsatisfactory), with no data reported for municipal or private sources.
 - In St. Catherine, the NWC assessed 31 out of 44 supplies as satisfactory, with no data from other providers.
 - In Manchester, 11 out of 24 supplies assessed were satisfactory.
 - Data for St. Elizabeth and Clarendon were not available.
 - Overall, while the NWC conducted most assessments, water quality varied across regions, with some notable concerns in Manchester and St. Thomas.
- Collaboration between PAHO, UNICEF, and the Ministry of Health and Wellness (MOHW) on health facilities continues. On 7 November, the PAHO WASH Expert and PAHO WASH Focal Point conducted field visits to assess WASH conditions at Savanna-la-Mar Hospital and Lamb's River Health Centre in one of the most affected parishes, Westmoreland.
- The Lamb's River Health Centre, located in a community marooned by the hurricane, was visited in collaboration with MOHW and the USAID-led Disaster Assistance Response Team (DART). In addition to the assessments, a clean-up and rehabilitation activity was carried out at Lamb's River Health Centre with support from the visiting team and healthcare workers.
- PAHO's shipment of medical and WASH supplies from Barbados was cleared from customs and collected from the port to the PAHO Office in Kingston on 6 November. Final delivery to the MOHW is currently being arranged.



SHELTERS

- By **10:00 p.m. on 8 November**, cumulative shelter occupancy stood at **1,303 persons** across all parishes, according to reports from the Ministry of Labor and Social Security.



HEALTH NEEDS

- Support for the **rapid restoration of essential services**—including debris removal, electricity, water, and communications, to enable community recovery and continuity of health service delivery.
- Life-saving health services maintained through field hospitals, emergency repairs, deployment of EMTs, provision of medical supplies, generators, WASH support, and essential medicines.
- Provision of mental health and psychosocial support (MHPSS) for patients, health workers, and affected communities.
- Rehabilitation and repair of five major hospitals and several health facilities across the western and southern regions to restore full functionality and service delivery.



RESPONSE

GOVERNMENT RESPONSE:

- MOHW has issued a national call for doctors and nurses to volunteer for the Black River Hospital and other affected areas.
- MOHW has issued a call for blood donations.
- The Preliminary National Needs List published by ODPEM, including detailed health needs, is available ODPEM at <https://supportjamaica.gov.jm/needs>. The list is based on support for response and recovery

for an estimated 400,000 people affected by the hurricane.

- Assessments are ongoing to determine priority health needs.
- The National Emergency Operation Center remains activated at Level 3.
- The MOHW HEOC remains activated, with twice daily briefing meetings to facilitate decision-making for the health response.
- All government ministries, departments and agencies have been in the field gathering data and information to inform ongoing preparedness activities and upcoming response activities.

PAHO RESPONSE:

- PAHO supplied galvanized sheets to **Cornwall Regional Hospital (St. James)** and PAHO receive technical specs and will procure some dialysis machines.
- MOHW reviewing deployment of **7 additional Type 1 EMTs** to less-affected areas.
- **Virtual CICOM** platform activated for EMT coordination and information management.
- **Structural Engineer Consultant** began infrastructure damage assessments on **2 Nov** at **Falmouth Hospital**; national plan in preparation with MOHW, including **SMART Facilities**.
- **WASH damage assessments** initiated **2 Nov** at Falmouth Hospital; international consultant providing support.
- **WASH supplies** received: water testing kits, multi-parameter meters, coliform test kits, and incubators.
- Ongoing technical support in **mental health, surveillance, nutrition, vector control, and continuity of health services**.

PAHO Deployments:

- WASH, damage assessment – 30/10/2025 to 14/11/2025
- Coordination, Health Cluster support, JAM CO EOC support – 04/11/2025 to 17/11/2025
- EMT Coordination – 11/02/2025 to 16/11/2025
- Environmental Health – 09/11/2025
- Information Management – 05/11/2025 to 20/11/2025
- Logistics – 04/11/2025 to 18/11/2025
- Damage Assessment (Structural)
- MHPSS – 03/11/2025 to 21/11/2025
- Procurement (virtual)
- RCCE – 05/11/2025 to 20/11/2025
- Administrative Assistance – 11/11/2025 to 25/11/2025

Photos



As of 11 November 2025, AECID (Spanish Cooperation) EMT (Emergency Medical Team), Type 2, is set up and operational at Falmouth hospital in the parish of Trelawny.



Forty deployment packs and two medical backpacks loaded on a WFP pickup truck aboard HNLMS *Pelikaan*, en route to Kingston—ETA 12 November, 07:30 a.m.



PAHO purchased and loaded 600 galvanized roofing sheets (16 and 14ft) and 400 pieces of timber (16 and 14ft) as part of the BDF EMT shipment. Idea is to retrofit the roof of Savanna La Mar hospital (Westmoreland) while the Barbados Defense Force Emergency Medical Team sets up, so PAHO supports both at the same time.