

HURRICANE MELISSA

Jamaica

PAHO



Situation Report #17 – 14 to 16-November-2025

HIGHLIGHTS

- **Landfall:** Category 5 hurricane at 12:00 on **28 Oct 2025**, worst-hit parishes: **St. Elizabeth, Trelawney, St. James, Hanover, Westmoreland**.
- Two weeks after Hurricane Melissa, recovery efforts continue across Jamaica, with **45 confirmed deaths and nearly 1.6 million people affected**.
- **Rapid Infrastructure Assessment:** widespread roof, electrical, sewage, water, drainage, and patient-care area damage.
- Communications remain **intermittent**; alternate channels installed.
- A total of **34 partners** have reported support to the health sector—the largest multi-agency health deployment to Jamaica in recent hurricane responses. Partners include international/local NGOs, UN agencies, donors, academic institutions, and volunteer medical teams.
- **Field missions launched** to support public health response and **MHPSS** in St. Elizabeth and Westmoreland.
- On 14 November, customs clearance was completed for emergency supplies arriving from Barbados aboard the **Dutch Navy vessel Pelikaan**. The shipment includes **40 deployment backpacks** for first responders and **four emergency medical backpacks** donated by Direct Relief. All items will be transported to the National Health Fund (NHF) warehouses for distribution.
- The activation level of the National Emergency Operations Centre (NEOC) remains at Level 3.
- The PAHO-supported platform for coordinating Emergency Medical Teams was activated on 5 November 2025, and is accessible at <https://www.virtualcicom.org>.

IN NUMBERS

Approx. 2.8m (entire population)
Potentially exposed¹

45 Deaths²

253 Injuries treated in A&E hospital departments across all 4 health regions³

17 Missing⁴

71 Evacuated⁵

32% Without electricity

5 Major hospitals⁶ severely impacted, widespread damage across Western and Southern Regions

98 active shelters^{7,8}

1: Statistical Institute of Jamaica data

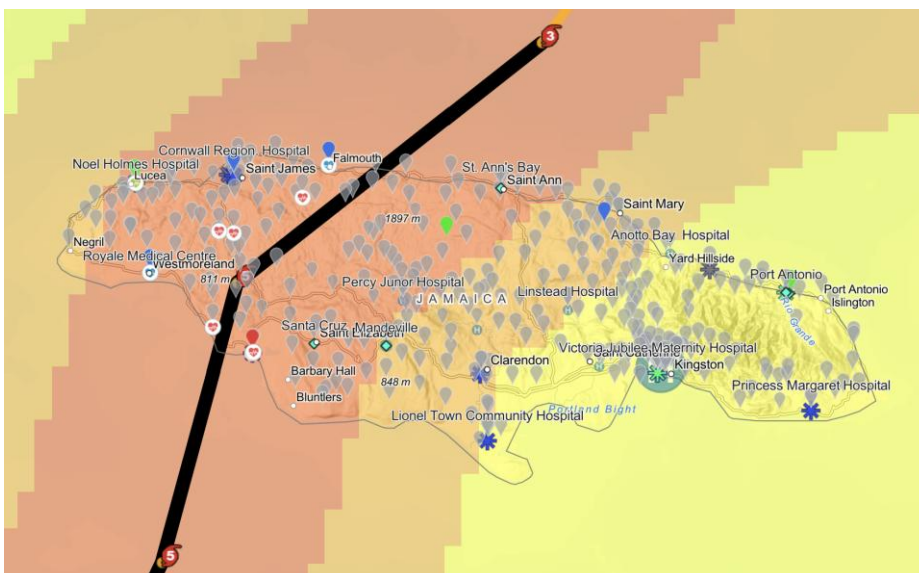
2: JISTV https://m.youtube.com/watch?v=seHnLvp_C7g

3,4,5,6: Ministry of Health and Wellness HEOC report #20

(11 November 2025, 8:00 p.m.)

7: OCHA Jamaica: Hurricane Melissa - Situation Report No. 4 (as of 11 November)

8: Ministry of Health & Wellness, Jamaica (HEOC), Report No. 21, November 12, 2025, 8:00 p.m.



Pan American Health Organization / World Health Organization. Hurricane Melissa Situation Report #17. 14 to 16 November 2025. Jamaica PAHO/WHO; 2025

www.paho.org | © PAHO/WHO, 2025

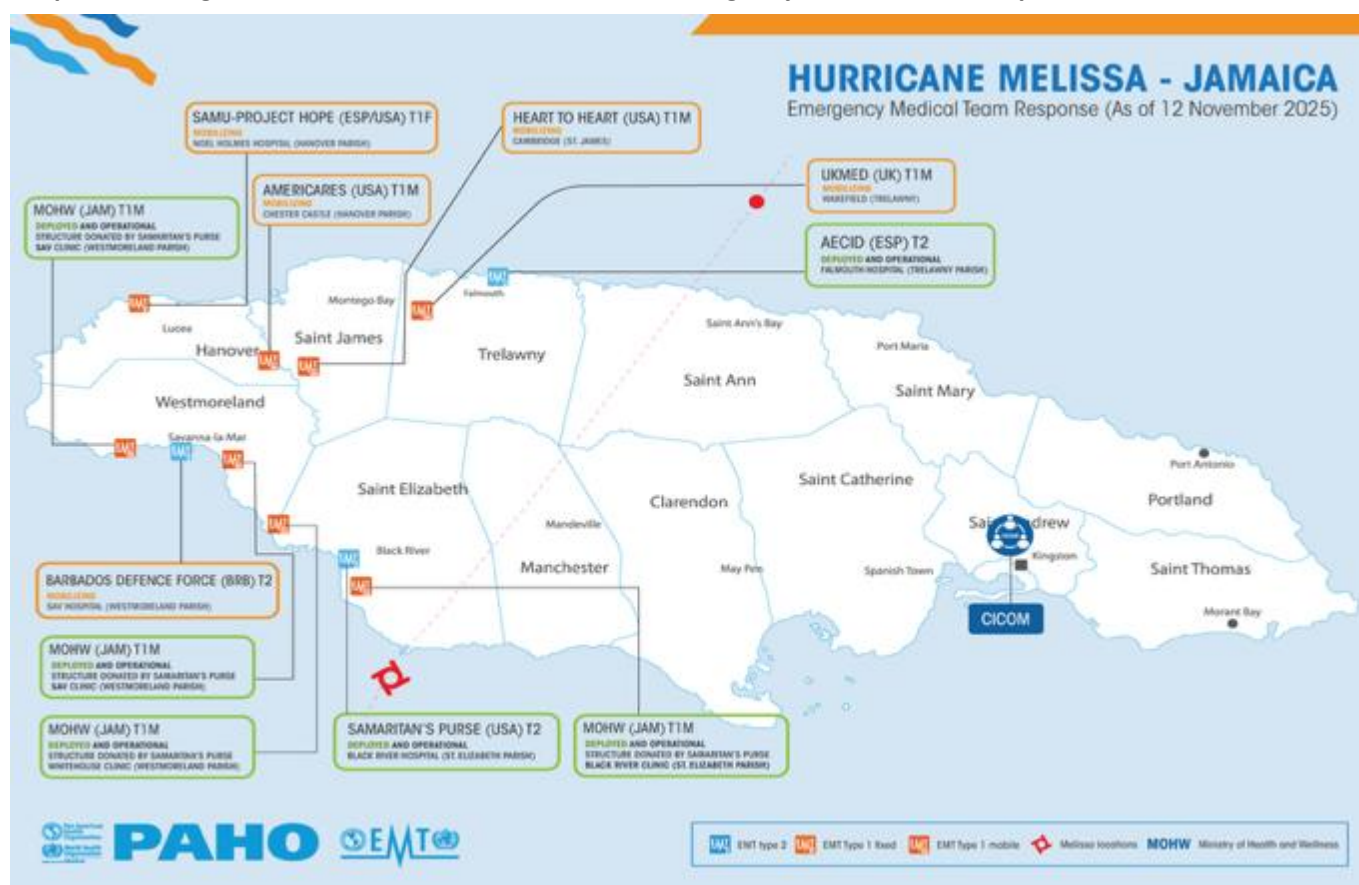


Pan American
Health
Organization



World Health
Organization
REGIONAL OFFICE FOR THE
Americas

Graphic showing the location of the PAHO-facilitated Emergency Medical Team response



Emergency Medical Teams (EMTs) Coordination

- EMT Registration Totals
 - Total Doctors Registered: 87
 - Total Nurses Registered: 98
 - Total Medical Staff Registered: 185
 - Total Medical Staff in country: 223
- **Spanish EMT Type 2**: Installed at Falmouth Public General Hospital. Operational 12 November, services include C-sections.
- **Samaritan's Purse EMT Type 2**: Installed at Black River, operational 4 November, Type 1 Field Health Centres: Black River (6 November), and Whitehouse (13 November)
- **2nd EMT Type 2 (Barbados)**: Mobilized, expected in-country within 4 days
- Two more teams, *Team Rubicon* and *CMAT*, have completed their mission authorizations and are ready for immediate deployment.

Health Services – Hospitals (Secondary Care)

As of 12 November, national hospital bed occupancy is **78%**, with **3,649 in-patients** and overall staffing coverage of **91%**. Three hospitals are operating **above capacity**: **Mandeville Regional Hospital** (145%), **May Pen Hospital** (124%) and **Kingston Public Hospital** (112%).

Bed occupancy:

- National Average: 82% (excluding Black River Hospital and 3 WRHA hospitals)

By Region:

- SERHA: 73%
- SRHA: 122%
- NERHA: 85%
- WRHA: 72% (Cornwall Regional Hospital 74% and Noel Holmes 52%)

Hospitals above capacity:

- Mandeville Regional Hospital (SRHA): 124 patients over capacity
- May Pen Hospital (SHRA): 50 patients above capacity
- Kingston Public Hospital (SEHRA): 62 patients above capacity

Staffing:

- National: 97% - Excludes Black River Hospital (SRHA) and Savanna-la-Mar and Falmouth (WRHA)

By Region:

- SERHA: 97% (excluding Bustamante Hospital for Children)
- SRHA: 97% (excluding Black River Hospital)
- NERHA: 96%
- WRHA: 92% (Noel Holmes Hospital: 92%, Falmouth Hospital: 100%, Cornwall Regional Hospital: 91%, Savanna-la-Mar: 89%)

Primary Health Care

Southern Regional Health Authority (SRHA)

- **Clarendon:** All 31 health centres open except Mitchell Town HC.
- **Manchester:** 18/18 with 8 with electricity, 18 rely on tank water and all 18 do not have telephone service.
- **St. Elizabeth:** 11/24 open (emergency services only).
- **Santa Cruz Smart Health Centre:** Fully functional.

Western Regional Health Authority (WRHA)

- **Trelawny:** 11 HCs are functional (6 fully, 3 partially, 2 significantly). 8 HCs are not in operation.
- **St. James:** Services are provided by 9 HCs, 13 remain inoperative.
- **Hanover:** 13 HCs are open, 6 remain closed (Copse, Maryland, Nyerere, Mt. Pelier, Chester Castle and Ramble).
- **Westmoreland:**
 - 7 HCs open: Savanna-la-Mar, Negril, Little London, Grange Hill, Georges Plain, Baulk HC and Delveland are open.
 - Mobile clinics have been set up to assist at Whitehouse & Darliston.

South East Regional Health Authority (SERHA)

- **St. Catherine:** 21/27 (78%) are open. Closed HCs are Connors, Bartons, Lluidas Vale, Redwood, Troja and Treadways.
- **Kingston & St. Andrew:** 34/40 are open. Mavis Bank remains inaccessible, Padmore and Rock Hall were closed prior to the hurricane.
- **St. Thomas:** 13/16 are open. Closed are Yallahs, White Horses (pre-hurricane), Hagley Gap (access issues).
- **Mandeville:** Smart Health Centre is in use.

North East Regional Health Authority (NERHA)

- **St. Ann:** 26/29 are operational. Non-operational are Madras, Queenhythe and Muirhouse HCs. A schedule for support mobile clinics has been sent to MOHW for these three HCs. Lime Hall HC is operational, but personnel are working in a reduced area due to damage.
- **St. Mary:** All 15 facilities are operational
- **Portland:** All 15 facilities are operational.

Tertiary Care: Several tertiary facilities in SERHA are under **significant operational strain**.

- **KPH** reports ICU at full capacity (6/6 beds, 5 intubated) with general ward occupancy at 107% and congestion at A&E. Roof leaks in multiple wards and a broken operating lamp are constraining surgical throughput.
- **Spanish Town Hospital** has 16 critically ill patients, prolonged waiting times in A&E and non-functional HVAC, while medical waste storage at **KPH, VJH and STH** is over capacity, requiring urgent contracting of private waste-disposal services.

WRHA:

- **Cornwall Regional Hospital (St. James):** Remains operational. Lost previously expanded temporary spaces. Inpatient capacity **reduced by 50%**. **A&E full. Overcrowded wards** with compromised infection control. Water restoration ongoing. Surgeries being shifted to **private facility**.
- **Falmouth Public General Hospital (Trelawny):** **Partially functional**, 130-bed facility with **60-70% roof damage**. Only **one operating theatre** on standby, no AC. **Maternity ward roof** remained but leaking. **Surgical & pediatric wards lost roofs. A&E block completely lost roof.**
- **Noel Holmes Hospital (Hanover):** Functional with laboratory and pharmacy operational.
- **Savanna-La-Mar Public General Hospital (Westmoreland):** OPD structure **destroyed**. Inpatient services continue under **leaking areas**. Former **COVID isolation block** could house 20+ patients once repaired

SRHA

- **Black River Hospital (St. Elizabeth):** Black River Hospital continues to rely on the Samaritan's Purse Emergency Medical Team Type 2, now operational. The facility remains **non-functional**. The laboratory was destroyed, and the operating theatre is unusable.
- **Mandeville Regional Hospital (Manchester):** Over capacity (162%) with emergency services only. Mandeville Regional Hospital provides Accidental and Emergency, OPD and Emergency surgery. Chapel Town Hospital is offering full service.
- **May Pen Hospital (Clarendon):** Over capacity (146%); partially operational, A&E/emergency surgery only. Lionel Town Hospital is fully functioning with 86% occupancy. Percy Junor Hospital is partially functioning with 77% of occupancy.

SERHA

- **Kingston Public Hospital:** Full operation; roof leaks; ICU 100% occupancy; general wards 107%.
- **Spanish Town Hospital:** Full operation; HVAC issues in A&E; circuit board repairs ongoing.
- **Bustamante Hospital for Children:** Full operation; ICU full.
- **UHWI:** Full operation; water shortages persist.

NERHA

- **St. Ann's Bay Regional Hospital:** Hospital is operational with outpatient services restored. Receiving support from an Israeli Medical Team since 7 November. 85% occupancy; roof damage. At **St Ann's Bay Regional Hospital**, the missing dietary-block roof is being replaced, and the Top Nurses' Home will temporarily house dietary services once gas piping is completed, phased OPD reopening.
- **Port Maria Hospital:** Operating on generator; NWC restored; 5-day fuel reserve.
- **Annotto Bay Hospital:** Normal services resumed. Leak detected in water system; continues to receive **trucked water** due to NWC disruption; generator for radiology; elective surgeries on hold until JPS returns, X-ray limited; electives surgeries remain paused, clinics have resumed.
- **Port Antonio Hospital** and the Health Department have reconnected to **JPS power**, providing emergency services only. Port Antonio Hospital is fully operational.
- **Alexandria:** The road remains inaccessible and the connection unavailable.

Surveillance

- As of 13 November, at 10 pm, there were 253 cumulative injuries reported for people treated in the Accident & Emergency Department of hospitals in all four regions.
- On 14 November 2025, 98 reported Emergency Shelters remain activated. Shelter occupancy is decreasing steadily, but activity remains dynamic in several regions.
- No priority public health threats have emerged despite large scale displacement. Syndromic signals show no major spikes, though watery diarrhea and fever/cough continue to appear.
- A total of 27 suspected leptospirosis cases were reported from CRH, with the majority originating from St. James (n=21) and the remainder from Hanover (n=6), and no epidemiological clusters detected to date.

- Persistent gaps in data completeness particularly due to the NERHA blackout and ongoing communication challenges in WRHA continue to limit real-time situational awareness and may delay early detection of emerging health threats.

Nutrition

- As of 11 November 2025, relief agencies are distributing food packages and are also providing some hot meals.

Mental Health and Psychosocial Support

- The Ministry of Health and Wellness in collaboration with the Pan American Health Organization visited four parishes – Hanover, Westmoreland, Trelawny and St James, on Thursday, 13 November, to deliver an **MHPSS intervention with health care workers**. The team of approximately 20 health personnel from the Southeast Regional Health Authority, met with health care professionals and provided words of encouragement and empathy, as well as individual and group counselling.

Laboratory Services

- The National Laboratory Services (NLS) remain fully operational for the National Public Health Laboratory (NPHL) and the National Blood Transfusion Services (NBTS). NLS continue to rely on the HEOC for transportation services.
- In WRHA, there were disruptions in laboratory services at the major hospitals that were damaged. Power has been restored to the laboratory at the Savanna-la-Mar hospital and there are limited services being offered. Support is being provided by non-affected laboratories to ensure continuity of services.
- SRHA reports that laboratory services across the region have adequate staffing and sufficient reagents available. All equipment remains functional. A field hospital that has been set up in Black River is equipped with a laboratory.
- NLS are continuously monitoring the supply of blood and blood products.

Immunization

- To mitigate the risk of tetanus infection and to support ongoing emergency response efforts, the Ministry of Health and Wellness is seeking donations of tetanus vaccines and related supplies (e.g. syringes, cold-chain storage materials).
- All donations will be coordinated through the National Emergency Operations Centre in collaboration with the Ministry's Public Health and Disaster Response Divisions.

Risk Communication and Community Engagement

- As of 13 November 2025, a review of the mental health communication strategy is underway.
- The Ministry of Health and Wellness continues to disseminate messages to the public on safeguarding health post Hurricane Melissa, including messages on preventing vector borne diseases and leptospirosis.
- As of 13 November 2025, some health regions have begun disseminating public health messages on water treatment and prevention of gastroenteritis, leptospirosis and mosquitoes. Town criers/wayside announcements are being used in some areas.



HEALTH RISK ASSESSMENT

- Post-hurricane **vector-control capacity** has been significantly disrupted, with over **70% of workers** in the five most affected parishes experiencing major damage to their homes. To compensate, the MOHW is recruiting **approximately 700 temporary vector-control workers**, with around **400 already mobilized**, and redeploying staff from less affected regions.
- In St. Mary, where prolonged flooding has displaced rodent populations, the health

department has launched a **14-week rodent-control program** across six communities, combining intensive baiting (500 premises per locality), school-based health education and systematic carcass collection and disposal.



Infrastructure - Structural Damages in the most affected parishes, namely St. James, Trelawny, Westmoreland, Hanover and St. Elizabeth

i. Falmouth General Hospital (Trelawny)

- Suffered catastrophic damage, losing approximately 60–70% of its roof.
- The only structurally standing block is the operating theatre area (previously used during the Cornwall Regional relocation), though it sustained damage, including shifted AC units and leaks.
- One theatre remains on standby for emergency cases, operating without air-conditioning.
- The maternity ward roof remained in place but leaked. The surgical block and pediatric ward lost their roofs.
- Dietary and storage areas were destroyed, forcing staff to cook outdoors while maintaining sanitation for staff and patients.
- The A&E block completely lost its roof. Pharmacy services remain partially active.

Falmouth Health Centre

- Lost its roof; staff managed to save most records.
- 31 clients served (23 curative, 5 family planning, 1 postnatal, 1 antenatal, 1 BCG vaccination).
- OPD has light but needs consistent water supply and a cooling system.
- Requires hand sanitizers and a tent for the waiting area.
- Vaccine storage remains secure.

Other Trelawny Health Facilities:

- **Wakefield Health Centre:** Extensive roof damage; structure tilted; no service.
- **Bounty Hall Health Centre:** Roof and cottage destroyed; no service.
- **Deeside Health Centre:** Roof destroyed; roads impassable; no service.
- **Bunker's Hill Health Centre:** Road impassable but no structural damage.
- **Sherwood Health Centre:** Roof of concrete tank gone; no other damages; no clinic today; no electricity or internet; using tank water.
- **Rio Bueno Health Centre:** Fence damaged; building intact; no utilities; using tank water.
- **Stewart Town Health Centre:** Roof severely damaged.
- **Jackson Town Health Centre:** Roof destroyed; needs tarpaulin; no utilities.
- **Duanvale Health Centre:** Roof severely damaged; no service.
- **Ulster Spring Health Centre:** Roof damaged in several areas.
- **Warsop Health Centre:** Roof destroyed; no service.
- **Wait-a-Bit Health Centre:** Roof destroyed; no service.

ii. Cornwall Regional Hospital (St. James)

- Remains operational but under severe strain.
- A&E is full, with nowhere to transfer admitted patients.
- Requires a field hospital for additional ward space and surgical support.

Associated St. James Facilities:

- **Mount Carey and Cambridge Health Centres:** Facilities destroyed.
- **Type V, Salt Spring, Roehampton, Adelphi, Catherine Hall Health Centres:** Flood, roof, and structural damage affecting equipment and furnishings.
- **Somerton, Goodwill, Maroon Town, Lottery, Tower Hill, Johns Hall, Garlands, Springfield Health Centres:** Major roof and infrastructure damage.

iii. Noel Holmes Hospital (Hanover)

- Remains functional; A&E operational.
- Patients are being housed in corridors and a former isolation unit.
- Roof damage on male ward and outpatient block managed with tarpaulin due to solid wall construction.

Associated Hanover Facilities:

- **Lucea, Ramble, Chester Castle Health Centres:** Facilities destroyed or severely compromised.
- **Hopewell, Sandy Bay, Maryland, Montpelier, Grange Kendall, Nyerere Health Centres:** Roof, infrastructure, and furnishings damaged.
- **Cave Valley Health Centre:** Roof and infrastructure damage with water intrusion.
- **Hanover Health Department:** Roof and infrastructure affected.

iv. Savanna-la-Mar Public General Hospital (Westmoreland)

- Outpatient structure destroyed, but inpatient services continue.
- Leaking areas are being managed, with staff maintaining clean conditions.
- The former COVID-19 isolation area requires restoration and could accommodate over 20 patients once repaired.

Associated Westmoreland Facilities:

- **Savanna-la-Mar Health Centre:** Roof, partitions, and equipment destroyed.
- **Westmoreland Health Department:** Roof and water damage.
- **Whitehouse, Petersfield, Darliston Health Centres:** Severe roofing, structural, and equipment losses.
- **Bluefields, Negril Health Centres:** Roof and structural damage due to water intrusion.
- **Baulk, New Works, Beeston Spring, St. Leonards, Lambs River, Birkshire, Williamsfield, Bethel Town, Cornwall Mountain Health Centres:** Roof, infrastructure, and furnishing damage.
- **Georges Plain Health Centre:** Minor roof and fence damage.

v. Black River Hospital (St. Elizabeth)

- Currently operating only its A&E services on the ground floor.
- Both inpatient blocks lost their roofs, including the recently refurbished surgical block.
- Laboratory destroyed.
- Former operating theatre and administrative buildings lost roofs and are unusable.
- Requires a field hospital with an operating theatre, wards, and laboratory capacity.

Water:

- SEHRA:
 - St. Catherine: 13 HCs remain without access to NWC water.
 - Kingston and St. Andrew: 5 HCs are still without water: Seaview Gardens, Sunrise, Gordon Town, Dallas, Lawrence Tavern.
 - St. Thomas: 7 HCs are still without water: Cedar Valley, Font Hill, Hagley Gap, Llandewey, Rowlandsfield, Seaforth, White Hall.

- SRHA:
 - Clarendon:
 - 30/32 HC facilities (94%) recuperated access to water, most HCs operating on tanks.
 - Croftshill and Rock River HCs do not have water nor tanks.
 - Manchester: All facilities depend on water tank.
 - St. Elizabeth:
 - 23/25 centres are on water tank.
 - 2 HCs have damaged tanks.
- WRHA: Adequate reserves at most hospitals; private trucking contracts in place.
- NERHA: 8 HCs in Portland without water; Annotto Bay leak detected.

INFRASTRUCTURE

Structural Damage

Preliminary findings indicate **widespread damage** to roofs, electrical networks, sewage systems, water storage facilities, backup power, drainage, and critical patient care areas. Several facilities remain partially functional, while others, particularly in SRHA and WRHA, require full reconstruction to resume services safely. The national cost is \$10,322,458,373.48 as outlined in the following table:

Region	Total (JMD)	% of National Cost
SRHA	\$6,135,000,000	59.4%
WRHA	\$3,173,132,000	30.7%
SERHA	\$483,326,373.48	4.7%
NERHA	\$250,000,000	2.4%
Bellevue Hospital (BVH)	\$281,000,000	2.7%
Grand Total	\$10,322,458,373.48	100%

SRHA

- Black River Hospital: major structural damage persists (estimated at JMD \$3.55B).
- Percy Junor Hospital: roof & structural damage.
- Lionel Town Hospital: medium to major structural damage: loss of roof, medium to severe leakage from windows, ceilings and doors, flooding, damage to the dietetics side door caused by strong wind.
- Multiple St. Elizabeth HCs: roofs, fences, water intrusion (14/24 damaged).

WRHA

- Falmouth PGH – 60–70% roof loss; multiple blocks destroyed.
- Savanna-la-Mar, PGH: OPD destroyed; major roof damage.
- Cornwall Regional Hospital: Doctors without Borders have restored zinc roofs to the female medical and surgical wards and is working to complete A&E, maternity, renal unit and oncology.
- Noel Holmes Hospital: major roof & structural damage.
- Numerous HCs in Trelawny & Westmoreland – roofs do not exist (Wakefield, Falmouth, Warsop, Bounty Hall, Wait-a-bit, Deeside HC, etc.).
- St. James: Catherine Hall HC flooded.

SERHA:

- KPH roof leaks in multiple wards 2 North, 2 West and Edwina. Broken lamp in operating theatre has impacted surgeries.
- SJH generator failure for LINAC.
- PMH sections of the roof at Doctors and Matron quarters and the entire walkway blown away.
- VJH has medical waste over capacity.
- BHC has medical waste over capacity, HVAC A & E is not yet cooling.
- St. Catherine: Point Hill HC suffered major damage due to flooding.
- KSA: Mavis Bank remains inaccessible.

- St. Thomas: STH: medical waste over capacity, HVAC in A&E not working with no updates. Hagley Gap HC continues to have access issues.

NERHA

- SABRH: Plans are in place to utilize the Top Nurses home once piping for gas is complete. roof damage (Overflow Ward, OPD, Staff Quarters, Physiotherapy); dietary roof failure.
- ABH: SCN roof leaks; PtMH: minor roof issues; PAH: windows blown out.

Water

SRHA

- St. Elizabeth: 23/24 (95%) HCs without NWC, only Newell HC has. Tanks are in use, but 2 are damaged.
- Clarendon: All HCs have water, 22 with tanks and 9 with NWC. 5 HCs use both tanks and NWC.
- Manchester: PJH relying on tanks, 18/18 HCs serviced via tanks.

WRHA

- CRH & SPGH: NWC low pressure; trucking ongoing.
- FPGH: Water supply is now available. Still reliant on tanks. There is a schedule to full tanks daily.
- MV Dawn desalination vessel supplying Hanover & Westmoreland.

SERHA

- LPH: intermittent NWC; trucked water twice daily.
- St. Catherine: 14/28 (50%) HCs remain without access to NWC. 26 health facilities and the Health Department are serviced by tanks, except Riversdale HC.
- KSA: Dallas HC has no water; Lawrence Tavern HC has no connection to NWC.

NERHA

- PtMH & ABH – NWC restored but leaks detected, PAH stable.

Electricity

SRHA

- BRH – generator only; MRH & PJH – JPS restored; LTH full utilities.
- Clarendon: 13 centres have no electricity.
- Manchester: 8/18 HCs (4 JPS, 4 generator).
- St. Elizabeth: All HCs are without JPS; 5 on generator.

WRHA

- CRH – JPS restored.
- SPGH & NHH – generator reliance.
- FPGH – generator only, with support from EMT T2 for 3 days a week. As of 13 November, FPGH restored to JPS.
- St. James: The generator at Cambridge HC is no longer present.
- Trelawny: 10 HCs without JPS connection.

SERHA

- St. Catherine: 9/28 HCs are without JPS. As of 13 November 2025, 7/28, HCs are without JPS (25%).
- KSA: Dallas and Lawrence Tavern have no light.
- KPH, VJH, UHWI – JPS restored; SJH – LINAC backup generator failure; PMH – JPS restored.
- St. Thomas: two HCs without electricity.

NERHA

- SABRH, PtMH, ABH, PAH – JPS restored; ABH had generator issues earlier.
- Portland: All HCs have been reconnected to JPS.
- St. Ann: 27/29 HCs are still functioning without generator or JPS.

Communications

At the national level, DECOM VHF radios have been installed but there are low response rates on daily checks.

SRHA: BRH – intermittent; MRH – telephone operational; PJH – inconsistent. Manchester: HCs have no telephone service.

WRHA: CRH, SPGH, NHH – poor phone service; Starlink in A&E only; server damage at FPGH.

SERHA: NCH switchboard down; SJH partial; KPH/VJH internet functional; PMH intermittent. BCH: Internet and mobile communications ‘choppy’, switchboard partially operational.

NERHA: SABRH: communication is intermittent; ABH/PtMH – partial; PAH stable.

- As of 11 November, **36% of the population remains without electricity**, while **57% of Digicel mobile sites** have been restored.
- Coordination notes for Emergency Medical Teams will rely on PAHO’s licensed virtual platform (Virtual CICOM).
- **216 VHF radios** installed under the **JICA–ODPEM DECOM Project** across MOHW facilities, including **42 base stations, 102 mobile, and 72 handheld units**.
- **80% of base stations are operational**.
- **Daily radio checks** conducted from the **HEOC** to all parishes to ensure connectivity and system readiness.
- PAHO virtual Map with layers:
<https://who.maps.arcgis.com/apps/instant/sidebar/index.html?appid=9226e33620e5458290a820b60f1b3e27>



WASH

- Approximately **500 water-quality assessments** conducted by MOHW show that **50% of samples** from NWC and municipal supplies lack adequate residual chlorine, indicating a substantial risk of water-borne disease in communities now receiving piped water.
- **SERHA** shows better performance (92% adequate), while **SRHA and parts of WRHA** remain more vulnerable. To mitigate this, the MOHW has approved the deployment of the **MV Dawn** desalination vessel to feed the NWC network in Lucea and surrounding areas, including Noel Holmes Hospital, and with UNICEF and partners installing water-treatment systems at priority hospitals and health centres and distributing chlorine tablets at community level.
- 500 chlorine residual assessments performed at NWC and municipal supplies; **50% lacked adequate residual chlorine** → implies up to half of the population currently supplied may be exposed to contamination risk.
- **SERHA:** 83 samples; 92% adequately chlorinated.
- **WRHA (Hanover):** 2 supplies tested; 50% positive.
- **SRHA:** 52 samples; 52% adequately chlorinated.
- PAHO’s shipment of medical and WASH supplies from Barbados was cleared from customs and collected from the port to the PAHO Office in Kingston on 6 November. Final delivery to the MOHW is currently being arranged.



SHELTERS

- Shelter monitoring confirms **98 active shelters** hosting **1,417 people**, including **308 shelterees** across **22**

sites in St. Elizabeth. No outbreaks have been reported, with only isolated conditions noted: **two cases of cough, one hypertensive patient, one person with diabetes requiring insulin, a 15-year-old male with open sutures, and one individual in Manchester needing prescribed medication.**

- During an **aerial assessment in Petersville on 13 November**, health teams reviewed **16 people in the official shelter and 5 in an unofficial site**, identifying acute issues such as **a nail-stick injury, diaper rash, persistent cough, and uncontrolled hypertension.**



HEALTH NEEDS

- By **18 November**, there should exist a consolidated list of needs across the following areas: environmental health, medical supplies, and infrastructure damage.
- **Support for the rapid restoration of essential services**, including debris removal, electricity, water, and communications.
- **Maintenance of life-saving health services** through field hospitals, emergency repairs, deployment of EMTs, provision of medical supplies, generators, WASH support, and essential medicines.
- **Provision of mental health and psychosocial support (MHPSS)** for patients, health workers, and affected communities.
- **Rehabilitation and repair of five major hospitals and multiple health facilities** across the western and southern regions to restore full functionality and service delivery.



RESPONSE

GOVERNMENT RESPONSE:

- The **NEW LIFE 24/7 helpline (888-NEW-LIFE)** has begun to receive hurricane-related calls, and professional associations such as **JAMPSYCH** and the **Jamaica Psychiatric Association** are mobilizing approximately **35 psychologists** to provide targeted support to health-care workers and communities in Black River and Whitehouse.
- The Preliminary National Needs List published by ODPEM, including detailed health needs, is available ODPEM at <https://supportjamaica.gov.jm/needs>. The list is based on support for response and recovery for an estimated 400,000 people affected by the hurricane.
- All government ministries, departments and agencies have been in the field gathering data.
- MOHW released a Post Hurricane Melissa preliminary rapid infrastructure damage assessment, indicating a total estimation of damages at JMD \$10,322,458,373.48.

PAHO Coordination & Response Planning - Health Cluster & EMT Coordination

- A total of **34 partners** have reported support to the health sector—the largest multi-agency health deployment to Jamaica in recent hurricane responses. Partners include international/local NGOs, UN agencies, donors, academic institutions, and volunteer medical teams.

MHPSS:

- At least **6 partners** are providing trauma-informed care, community and school-based psychosocial support, child protection services, and support for first responders.
- **Supplies & Equipment:**
- More than **10 partners** are supplying or have the capacity to supply reproductive health kits, medicines, neonatal equipment, hygiene items, water purification systems, and digital health tools.
- **Community Health & Vulnerable Groups:**
- Multiple partners are supporting PLHIV, children, women, elderly, displaced persons, rural communities, and shelters, with strong outreach and community health activities.
- **Health Systems Strengthening:**

- Support includes logistics platforms, EHR systems, HIV service continuity, facility repairs, and responder capacity building.
- **Geographic Focus:** Greatest concentration of support is in **western parishes**—St. Elizabeth, Westmoreland, Hanover, St. James and Trelawny, along with national coverage for HIV, MHPSS, telehealth, and WASH.
- **Key Focus:** Strong MHPSS resources available and the sub-group coordination being established; preparation for activation of the other subgroups in progress; offers align with priority gaps and comprehensive health needs list being finalized; guidance on credentialing continues to ensure foreign health teams have timely submission and approval; increased community-based support observed.

PAHO Deployments:

- WASH, damage assessment – 30/10/2025 to 20/11/2025
- Coordination, Health Cluster support, JAM CO EOC support – 04/11/2025 to 24/11/2025
- EMT Coordination – 11/02/2025 to 25/11/2025
- Environmental Health – 09/11/2025 to 23/11/2025
- Information Management – 05/11/2025 to 20/11/2025
- Logistics – 04/11/2025 to 17/12/2025
- Damage Assessment (Structural)
- MHPSS – 03/11/2025 to 28/11/2025
- Procurement (virtual)
- RCCE – 05/11/2025 to 20/11/2025
- Administrative Assistance – 11/11/2025 to 25/11/2025

PAHO virtual Map with layers:

<https://who.maps.arcgis.com/apps/instant/sidebar/index.html?appid=9226e33620e5458290a820b60f1b3e27> The map also includes layers showing hurricane wind strength and path, as well as population density.

Photos



At the Health Cluster Coordination meeting on 13 November 2025, a representative from Team Rubicon briefs partners on the latest emergency health operations, outlining priorities, challenges, and next steps in the response. Around the table, government officials, UN agencies, NGOs, and other health partners listen closely and exchange updates, underscoring the spirit of collaboration that is driving the health sector's coordinated action in the aftermath of Hurricane Melissa.