

## Situation Report #21 – 26-28-November-2025

### HIGHLIGHTS

- The Ministry of Health and Wellness (MOHW) declared an **outbreak of leptospirosis on 21 Nov 2025** following an increase in suspected and confirmed cases. As of 26 November 2025, a total of **39 confirmed/probable/suspected cases** were reported, and **18 confirmed cases** of leptospirosis, including **10 suspected deaths** (6 confirmed) following Hurricane Melissa.
- **124 health facilities were damaged** islandwide.
- **2,619 health workers** were affected.
- In the **five high-impact parishes**, 5 hospitals and 84 health centres offer partial or full services; 17 do not offer services; 18 are pending assessment.
- As of 27 November 2025, **40 partners** have reported support to the health sector through the MOHW-PAHO co-chaired Health Cluster, including 21 NGOs, 3 UN agencies, the Jamaica and Barbados Defence Forces, donors, academia, and volunteer medical teams. <https://shiny.paho-phe.org/melissa-partners/>
- As of 28 November 2025, **PAHO purchased and delivered several health emergency items** (Annex 1).
- Critical items identified in the **Health Needs List** (Annex 2).



MOHW and PAHO visited a shelter managed by AECID (Spain) in the compound of Falmouth Public General Hospital, Trelawny.

### IN NUMBERS

**Approx. 2.8m (entire population)**  
**Potentially exposed<sup>1</sup>**

**45 confirmed deaths**  
**from Hurricane Melissa with 32 under investigation<sup>2</sup>**

**10 deaths related to Leptospirosis, with 6 confirmed, 39 cases of Leptospirosis, of which 18 are confirmed<sup>3</sup>**

**340 Persons injured<sup>4</sup>**

**21 Persons missing<sup>5</sup>**

**24% of population without electricity, 19% without water<sup>6</sup>**

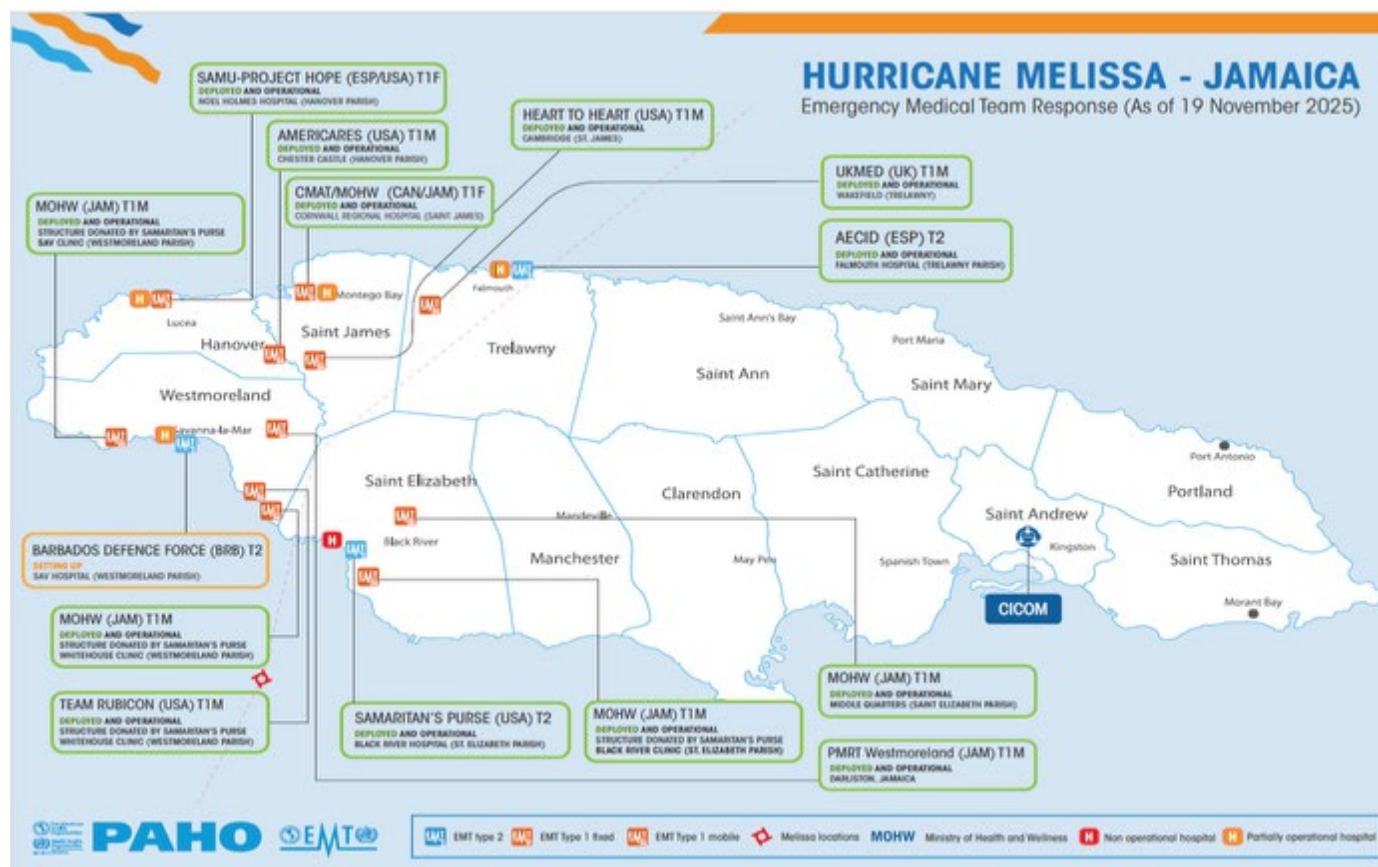
**98 Emergency shelters activated in 7 western parishes; Occupancy of 1,441 persons<sup>7</sup>**

1: Statistical Institute of Jamaica data

2,3,5,6,7: NEOC Situation Report #31 (27 November 2025, 10:00 p.m.)

4: Health EOC Report #37 (28 November 2025)

## Graphic showing the PAHO-facilitated Emergency Medical Team response as of 19 November 2025



### Emergency Medical Teams (EMTs) Coordination

EMTs updates: Total medical staff **504**; **341** registered.

- Total Medical Staff: 504
- Total Registered: 341
- Incomplete Files: 63
- Files pending review: 100
- Percentage Registered: ~68%

### Health Services

- Primary Care:** In the five most affected parishes, **101 health centers assessed**:
  - 58 major damage, 3 moderate, 18 minor, 9 no damage, 13 pending assessments.
  - 17 centers (17%) remain closed
  - 28 offer partial services
  - 56 (55%) providing full services
- Secondary Care Hospitals**
  - All 5 hospitals in high-impact parishes sustained damage (roofs, electrical/water systems, sewage, backup power, critical care areas). One of the five - Black River Hospital - was destroyed.
  - **Current operational status:** 3 hospitals functional with reduced capacity; 2 operating under emergency protocols.
- Temporary and Surge Service Delivery**
  - Emergency Medical Teams-Type 2: 2 operational; 1 scheduled to commence within 72 hours.

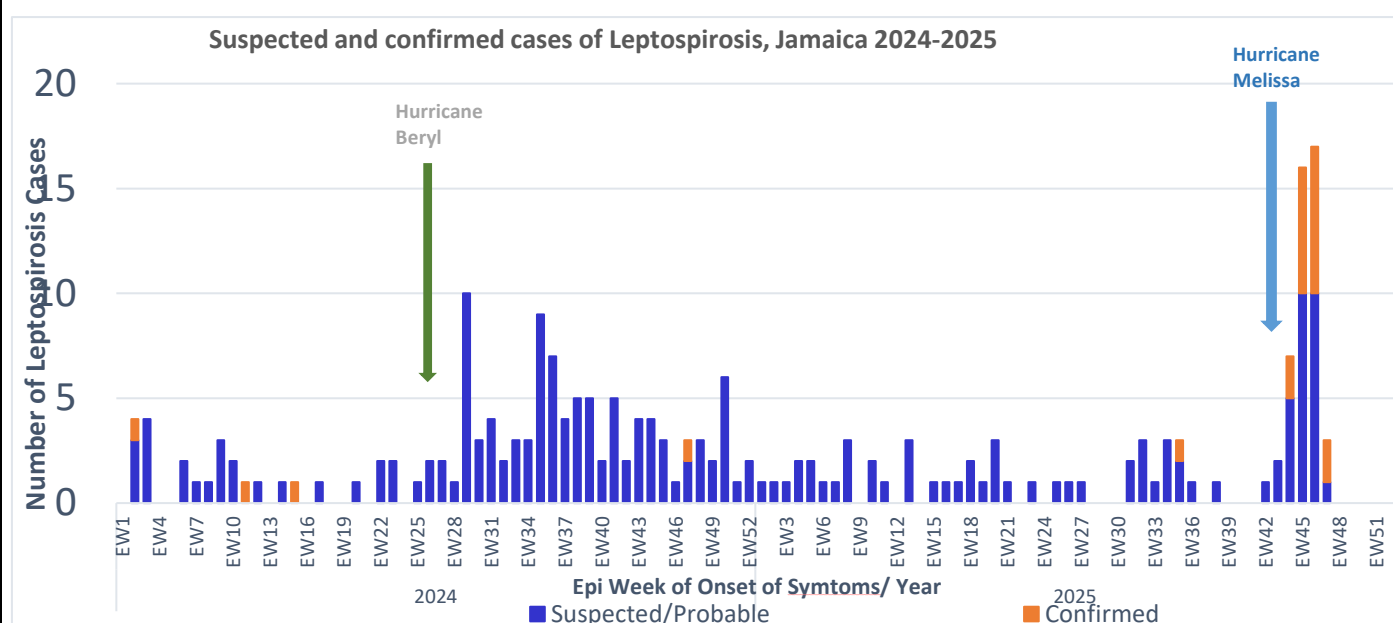
- Surge capacity: Combined Emergency Medical Teams and field hospitals provide approx. 120 beds and 60 clinical staff; utilization currently at 78%.

#### d. Priority Next steps

- Accelerate restoration of closed PHC facilities and strengthen interim service delivery (mobile clinics/temporary sites) to reduce avoidable hospital overload.
- Sustain EMT/field hospitals operations to optimize surge capacity.
- Support the provision of psychosocial support for healthcare providers to optimize their welfare and sustain their availability.
- Reduce outbreak-related demand through intensified clinical and public health interventions (risk communication, IPC, case detection, clinical management).
- Advance the MOHW's phased recovery plans (rapid repairs/ rehabilitation/ build back better).



## SURVEILLANCE



*\*HEALTH EMERGENCY OPERATIONS CENTRE (HEOC) REPORT #36, Hurricane Melissa, November 27, 2025*

The passage of Hurricane Melissa led to flooding in many communities, increasing the risk of transmission of leptospirosis. Based on the increase in monthly and weekly number of suspected and confirmed leptospirosis cases reported as of 20 November 2025, an outbreak of leptospirosis was declared on 21 November 2025.

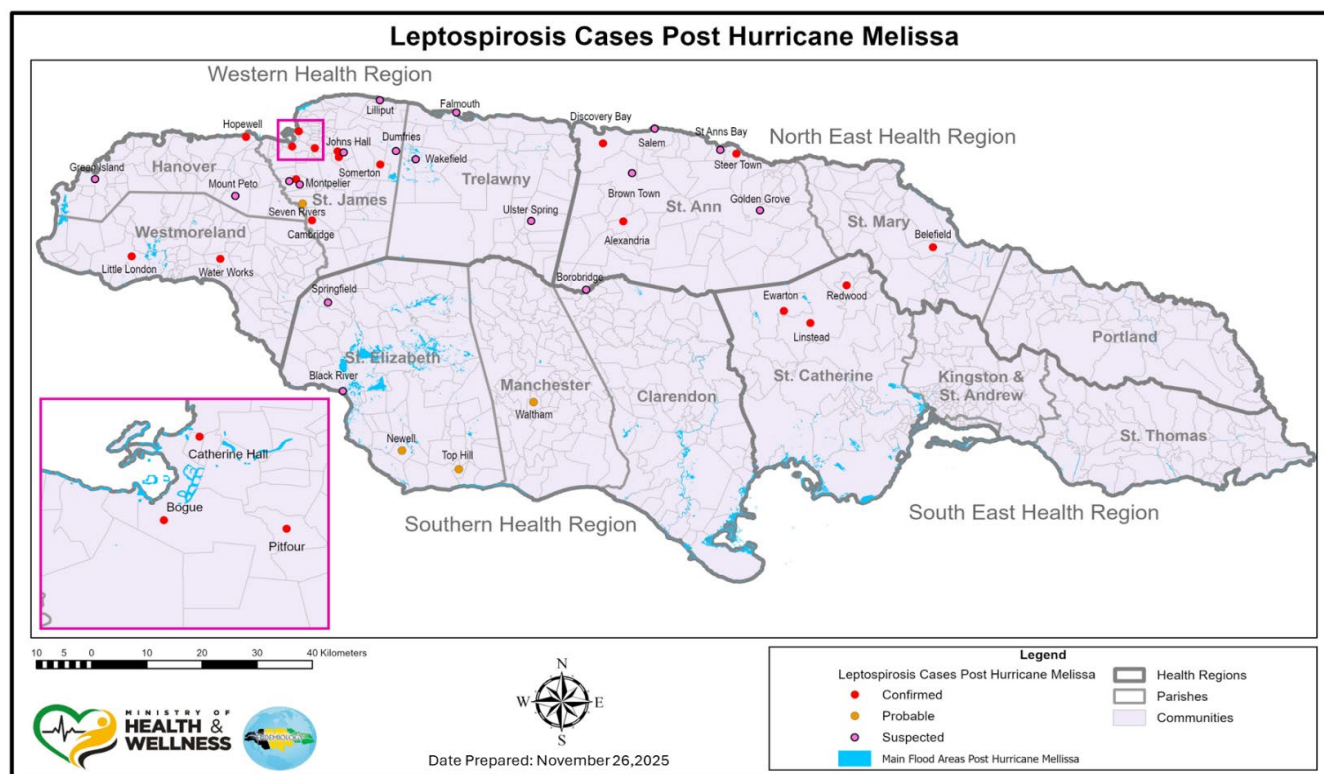
As of 26 November 2025, a total of **39 confirmed/probable/suspected** cases, and **18 confirmed cases of leptospirosis**, including **10 deaths (6 confirmed)**, have been reported following Hurricane Melissa.

#### PUBLIC HEALTH RESPONSE

- Enhanced clinical and syndromic surveillance for leptospirosis implemented across all health centres, hospitals, tourist establishments, and shelters.
- Clinician sensitization on the clinical management of leptospirosis and tetanus conducted through an MOHW-led webinar, supported by PAHO.
- Rapid response teams deployed to investigate any reported clusters or deaths.
- On-going discussions regarding the provision of doxycycline chemoprophylaxis for high-risk groups, including cleanup workers, rescuers, and farmers.
- Intensified rodent control and waste management activities in flood-affected communities.



- Strengthened health promotion and community education through local media, press releases, and MOHW press conferences.
- Coordination with Veterinary Public Health and local Municipal Corporations to improve animal inspection, sanitation control, potable water availability, and garbage collection.



**\*HEALTH EMERGENCY OPERATIONS CENTRE (HEOC) REPORT #36, Hurricane Melissa, November 27, 2025**

- **Dengue Fever Surveillance:** As of November 27, 2025, the National Surveillance Unit, Ministry of Health and Wellness recorded **452** suspected/probable cases of dengue, with zero (0) confirmed dengue cases for 2025. There were **2** suspected dengue related deaths in 2025 year to date and none was lab confirmed. Monthly and weekly totals have remained below epidemic thresholds since August 2024. Dengue activity has been low for 2025.
- **Respiratory Surveillance:** Weekly visits to sentinel sites for Influenza like illnesses (ILI) are below alert and epidemic thresholds in all age groups (<5, 5-59 & ≥60 years). Weekly percentage of hospital admissions for SARI were below alert and epidemic thresholds. In the last 4 weeks up to Epi Week 47, there were 2 positive cases of RSV and 3 positive cases for COVID-19. No cases of Influenza A nor B were recorded.
- **Tetanus:** There were two reported tetanus cases post Hurricane Melissa. One case was classified clinically as tetanus, who died, and the other case is under investigation.



## MENTAL HEALTH AND PSYCHOSOCIAL SUPPORT

- MHPSS services are being delivered by multiple organizations at national and community levels, including the hardest-hit areas, to support displaced populations and health-care workers.
- The MHPSS sub-cluster group is active, meeting every Tuesdays 3:00 pm allowing coordination at the service delivery levels. An MHPSS Technical Working Group meeting is held every Friday at 1:00 pm.
- MOHW and PAHO are finalizing a weekly SitRep form (digital) aligned with the indicators established in the MHPSS Plan of Action. Information generated will be included in the partners dashboard.
- MHPSS interventions:
  - 213 healthcare workers
  - 506 persons via Jamaica Red Cross

- 368 persons via C-Tech



## LABORATORY SERVICES

- **Leptospirosis** – Twenty-one positive cases, eighteen post Melissa and three prior to Melissa, as of 26 November 2025.
- **WRHA:** CRH performing routine tests; Special Chemistry limited. SPGH restored (CBC, PT/PTT, cultures; water tank installed). NHH fully operational with Roche support; Montego Bay Type V doing HIV/Syphilis. Sav HC non-operational. FPGH limited, with Haematology sent to CRH; Chemistry analyzer pending installation.
- **SRHA:** BRH lab destroyed; BRHC non-operational. Santa Cruz HC functional. Manchester & Christiana HCs operational.
- **National Blood Transfusion Services (NBTS):** Full services active; all centres open except Falmouth. NCH collected 24 units. Blood supply adequate; connectivity issues with WRHA and St. Ann's Bay.



## RISK COMMUNICATIONS AND COMMUNITY ENGAGEMENT

- **PRs/PSAs:** MOHW issued multiple advisories on health facility status, preparedness, risks (injury, seniors, mental health, food safety, vector control), blood donation, and Starlink handover with UNICEF.
- **Broadcast Media:** Radio PSAs aired nationwide on facility reopening, injury prevention, mental health, vector control, and food safety.
- **Media & Social:** Minister and technical teams conducted multiple interviews; social media released videos on clean-up, Starlink handover, Falmouth visit, and emergency messages; Oct 30 Twitter thread updating response efforts.
- **Community Engagement:** NGO/donor coordination email established; national nurse volunteer call launched with online form, website pop-up, and dedicated inbox.



## NUTRITION

- On 28 November 2025, there was a Nutrition Sector Working Group meeting, out of which 4 sub-groups emerged: Capacity Building, Surveillance, Strategic Planning, Advocacy and Communication.
- Over 2.1 million hot meals have been served by World Central Kitchen, 93,552 food packages distributed by ODPEM and 115,800 food packages distributed by the Ministry of Labour and Social Security and the Jamaica Defence Force



## INFRASTRUCTURE

### Update on Infrastructure

- PAHO virtual Map with status of health facilities: <https://who.maps.arcgis.com/apps/instant/sidebar/index.html?appid=9226e33620e5458290a820b60f1b3e27>. The map also includes layers showing hurricane wind strength and path, as well as population density.



## WASH & ENVIRONMENTAL HEALTH

- Environmental Health teams in the Western Regional Health Authority maintain an active, coordinated response after Hurricane Melissa, despite staff displacement, infrastructure damage, and communication challenges. They are conducting surveillance in food safety, water and wastewater quality, vector control, institutional health, port health, and veterinary public health, alongside health promotion to prevent disease outbreaks.
- 950 vector control workers deployed to high-risk communities, to reduce the mosquito population and mitigate the risk of dengue and other mosquito borne diseases.
- Community risk assessments across four parishes reveal ongoing high-priority issues. In St. James, 252 premises were assessed: in Westmoreland, 620. Of respondents, 76% have potable water, 8% rely on rivers or springs, and 4% harvest rainwater. Pest complaints include mosquitoes (438), rodents (97), and flies (67). While 705 premises had sanitary conveniences, 27 did not. Solid waste disposal remains problematic, with



bulky waste, sewage backflow, and mosquito breeding in West Green/Catherine Hall. All high-risk communities are monitored weekly, with interventions implemented as needed.



## SHELTERS

- ODPED reports that, as of 27 November 2025, **96 of 881 emergency shelters remain activated**, with occupancy of **1,058 persons**. Data includes inputs from Manchester, St Elizabeth, Westmoreland, St Ann, Trelawny, St James and Hanover parishes (i.e. 7 out of 14). Some displaced households are sheltering in churches and other facilities. The MOHW continues to monitor the situation at shelters and provide medical and psychosocial services to those affected.



## HEALTH NEEDS

- MOHW-approved **Health Needs List** (19 November 2025) shared with partners in the Health Cluster. Please see Annex 2.



## RESPONSE

### GOVERNMENT RESPONSE:

- The government is establishing a National Reconstruction and Resilience Authority (NARA) to lead, coordinate, fast track and oversee national rebuilding efforts in the aftermath of Hurricane Melissa.
- Government established Technology Recovery Task Force to restore and modernize critical services after Hurricane Melissa.

### PAHO RESPONSE:

- PAHO provided reagents to the national laboratory to support confirmation of leptospirosis, and supporting MOHW in evaluating the health information system to identify gaps, strengthen data quality, and improve timely leptospirosis reporting.
- Technical assistance is being provided to MOHW to review the investigation form and offered recommendations for laboratory testing.
- Support is also being provided to MOHW in assessing the transportation of specimens to ensure timely, safe, and reliable delivery to the national laboratory for confirmatory testing.
- A field visit to St. Elizabeth was conducted with officials from the Ministry of Health to support the response in areas reporting cases.
- Procurement of roof materials to 7 damaged primary health centres. PAHO is collaborating with MSF to get contractors hired, oversee logistics and supervise on-site repairs.
- PAHO, in collaboration with MOHW and UNICEF, is launching a new phase of WASH assessments to cover the 97 remaining health facilities, aiming to strengthen resilience and maintain safe conditions in health institutions after recent disruption.
- Purchasing 9,750 mosquito nets and 10,000 drum covers to be distributed within MOHW health facilities.
- PAHO is working closely with Team Rubicon during field assessments in Westmoreland, with a particular focus on Savanna-la-Mar Hospital and nearby health facilities. Joint teams visited the hospital to review service availability, patient flow, and critical gaps in infrastructure, WASH, supplies, and staffing.
- PAHO, in collaboration with the Ministry of Health and Wellness (MOHW) and UNICEF, is advancing efforts to ensure comprehensive coverage of all health care facilities for WASH assessments. A new phase of evaluations has been prepared, targeting the 97 remaining facilities that have not yet been assessed. This initiative aims to strengthen resilience and maintain safe conditions in health institutions following recent disruptions. This collaboration is also extending for further support on vector control.
- Support was provided to transport health counsellors to visit Health Care workers and offer PFA and MHPSS.

### PAHO Deployments:

- Members of the PAHO Regional Response Team continue to support incident management, health cluster support coordination, EMT coordination, support for epidemiologic surveillance and laboratory, environmental health, MHPSS, and logistics.

### Photos



PAHO donated essential supplies to support community health delivery further.

Source: Northeast Regional Health Authority, MOHW Jamaica

<https://www.facebook.com/share/p/17TYydT7La/?mibextid=wwXlfr>



Visit of the Canadian Secretary of State for International Development for a tour of the St. Ann Health Department's Health Centre on Saturday, November 22, 2025.

Source: Northeast Regional Health Authority, MOHW Jamaica

<https://www.facebook.com/share/p/17TYydT7La/?mibextid=wwXlfr>



## Annex 1: Items purchased by PAHO and delivered as of 28 November 2025:

### Savanna-la-Mar Hospital

Description	Inventory Units	
	Unit Type	Quantity
14ft 2x2 timber	Each	192
16 ft 2x2 timber	Each	192
14ft Galvanized sheeting	Each	300
16 ft Galvanized sheeting	Each	300
Screws for galvanized sheeting	Each	500

### Falmouth Hospital

Description	Inventory Units	
	Unit Type	Quantity
Dell laptops 14" screen, Intel Core Ultra 5 225U (12 cores, up to ~4.8 GHz), 16 GB DDR5, at 5600 MT/s	Each	7
1000-gallon Rotoplastic water tanks	Each	1
Mosquito repellent	Each	100

### Cornwall Regional Hospital

Description	Inventory Units	
	Unit Type	Quantity
16ft long corrugated galvanised roofing sheets	Each	508
Motorola walkie talkies	Each	20

### Mandeville Health Centre

Description	Inventory Units	
	Unit Type	Quantity
Installation of electrical plant in refrigerated container, including new battery and diesel fuel purchase for its operation.	Each	1

### National Health Fund, Ministry of Health and Wellness

Description	Package Unit	Quantity of boxes
Tent 24m2 - Part A	Pallet 1 of X 4	6
Tent 24m2 - Part b	Pallet 2 of X 4	
Tent 24m2 - Lighting kit, 2 pcs	Pallet 3 of X 4	
Tent 24m2 - Hard Deck Flooring, 130 pcs	pallet 4 of X 4	2
Tent 24m2 - Hard Deck Flooring, 130 pcs	pallet 4 of X 4	1
Tent 24m2 - Part A	Pallet 1 of X 4	6



Description	Package Unit	Quantity of boxes
Tent 24m2 - Part b	Pallet 2 of X 4	
Tent 24m2 - Lighting kit, 2 pcs	Pallet 3 of X 4	
Tent 42m2 - Part A	Pallet 1 of X 4	
Tent 42m2 - Part B	Pallet 1 of X 4	
Tent 42m2 - Lighting kit, 2 pcs	pallet 1 of X 4	
Tent 42m2 - Hard Deck Flooring, 230 pcs	Pallet 4 of X 4	1
Bladder tank 10m3, distribution ramp, repair kit	Unit	7
Mosquito Net deltamethrin impregnated 100d, 190x180x150	pack x 50	
Tarpaulin, 4x6m, sheet	pack x 5	16
Tarpaulin, 4x60m, roll	Unit	
Hurricane Kit, Direct Relief	Kit	11
		58
Kit PPE - Gown surgical, disposable, sterile, size M	Box x 56	16
Kit PPE - Gown surgical, disposable, sterile, size M		20
Kit PPE - Gown surgical, disposable, sterile, size L	Box x 50	20
Kit PPE - Gown surgical, disposable, sterile, size XL	Box x 40	20
Kit PPE - Gown surgical, disposable, sterile, size XL	Box x 40	17
Backpack Emergency Medical, Direct Relief	Unit	
Kit PPE - Gloves examination, Nitrile, Blue, size L	Box x 1,000	
Kit PPE - Gloves examination, Nitrile, Blue, size M	Box x 1,000	21
Kit PPE - Gloves examination, Nitrile, Blue, size XL	Box x 900	
Kit PPE - Respirator Mask N95	Box x 440	
Kit PPE - Face Shield Medical	Box x 112	
NCDK 2022, Mod 1, Medicines - KMEDNCDK2MM--A1	Module	16
IEHK 2017, Mod Sup, Medicines - KMEDIEHKSMM1-A1	Module	18

Description	Package Unit	Quantity of boxes
IEHK 2017, Mod Basic, Renewable and Equipment - KMEDIEHKBMRE3A1	Module	15
IEHK 2017, Mod Basic, Medicines - KMEDIEHKBMM1-A1	Module	
IEHK 2017, Mod Basic, Medicines - KMEDIEHKBMM1-A1	Module	17
IEHK 2017, Mod Sup, Equipment - KMEDIEHKSME7-A1	Module	
IEHK 2017, Mod Sup, Renewable - KMEDIEHKSMR6-A1	Module	
NCDK 2022, Mod 3, Renewable - KMEDNCDK2MR--A1	Module	
NCDK 2022, Mod 4, Equipment - KMEDNCDK2ME--A1	Module	
TESK 2017 Mod 2C Ear-Nose- Throat Inst. - KMDTESM2CE	Module	
TESK 2017 Mod 2A, Gral. Surgery Inst., DPC (Suture)- KMEDTESM2ADP	Module	
TESK 2017 Mod 2B, Ortho Surgery Inst., Plaster Casts Removal - KMEDTESM2BPC	Module	
TESK 2017 Mod 2A, Gral. Surgery Inst., Laparotomy, + Caesarian - KMEDTESM2AL	Module	
TESK 2017 Mod 2B, Ortho Surgery Inst. Bone Wiring and Kirshner - KMEDTESM2BB3	Module	
TESK 2017 Mod 2B, Ortho Surgery Inst., Basic Bone Surg., Curettes - KMEDTESM2BB2	Module	
TESK 2017 Mod 2B, Ortho Surgery Inst., Amputation - KMEDTESM2BA	Module	
TESK 2017 Mod 2C Urethral Sounds Inst., Dittel, Curved - KMEDTESM2CU2	Module	
TESK 2017 Mod 2C Ophthalmic Trauma Inst., Complem. - KMEDTESM2CO	Module	
TESK 2017 Mod 2A, Gral. Surgery Inst., Debridement - KMDTESM2ADE	Module	
TESK 2017 Mod 2C Vascular Inst., Complem. - KMEDTESM2CV	Module	
TESK 2017 Mod 2A, Gral. Surgery Inst., Thoracotomy, Complem. - KMEDTEDM2AT	Module	

Description	Package Unit	Quantity of boxes
TESK 2017 Mod 2A, Gral. Surgery Inst., Basic Surgery - KMEDTESM2ABS	Module	
TESK 2022 Mod. 2C, Sup. Sutures for vaginal/cervix tears - KMEDTESKM2C08A1	Module	
TESK 2017 Mod 2C, Reproductive Health Kit, Inst., Dilation/Curretage - KMEDTESM3BA / KMEDTESM2CR	Module	
TESK 2017 Mod 2A, Gral. Surgery Inst., Skin Graft - KMEDTESM2ASG	Module	
TESK 2017 Mod 2C Gynaecology Inst., Dilator, Curretage - KMEDTESM2CG	Module	
TESK 2017 Mod 2A, Gral. Surgery Inst., Fine(Pediatr.), Complem. - KMEDTESM2AF	Module	
TESK 2017 Mod 2A, Gral. Surgery Inst., Craniotomy, Complem. - KMEDTESM2AC	Module	
TESK 2017 Mod 2B, Ortho Surgery Inst., Basic Bone Surg, Complem. - KMEDTESM2BB1	Module	
TESK 2022 Mod. 2C, Embryotomy Instruments - KMEDTESKM2C07A1	Module	

## Annex 2: Health Needs List

Approved by MOHW, 19 November 2025

### Medical Equipment & Accessories

Item	Specifications	Quantity
AEDs		50 units
(Arterial Blood Gas) ABG Machine		100
Bed rolls for examination couches		200
BMI charts		500
BP Machines-Digital and manual		500 ea
BP Sphygmomanometers-Manual		15
BP Machine & Cuffs		200
C-Arm		10
Cardiotocographs (CTG) Machine		25
CT Scanner		50
Defibrillators		100
Dementia screening tool		500
Depression screening tool		500
Diagnostic Set-Otoscope & Ophthalmoscope		50
Dialysis Machines		12
Dopplers (Fetal)		500
ECG Machines, leads and paper		50 units
ENT Set		300
Examination Lamps		1000
Feotoscope		100
Feotal Monitor		50
Glucometer		150
Glucometer strips		3000 strips
HbA1c Point of Care Device		50
Infrared Thermometers		150
Lengthboard		50
Lights-Examination Ring & Penlight		20
MRI		4
Machines-ECG		50
Mammogram Machine		5
Monitors-Patient Multifunction		100
Multifunction Vital signs Monitor		200
Ophthalmoscope/Otoscope		300
Oximeters-Pulse Pocket		60
Pen Lights		200
Point-of-care test kits (HIV, syphilis, Hb, Group & Rh, sickle)		50 each
Portable Length/height board		72
Portable Scales (adults and children)		72 each
Portable Ultrasound (with various probes)		50



Portable X-ray (Digital)		50
Peak Flow meters		100
Pulse Oximeter		1000
Pulse Oximeters - Pocket		100
Reflex Hammer		50
Retinal Camera		10
Resuscitation equipped Cart		50
Resus Trolley		100
Scale - Standing		25
SPO2 Machine with monitor		50
Sphygmomanometer	Digital	100
Snellen Chart		100
Stadiometer (adult)		50
Stadiometer (child-friendly)		20
Stethoscope		300
Tape Measure		200
Thermometer	Digital	500
Tuning Fork		50
Urine Dipsticks (complete urinalysis)	Assorted types	100 ea
UV lamps		50
X-Ray Machine		20
Infant Warmer		25
Infant resuscitaire		25
Infant Scale		50
Neonatal Incubators (double door)		30
Phototherapy Lamp		10
Warming Blankets		30
<b>Operating Theatre Equipment</b>		
Item	Description	Quantity
Anaesthetic Machine		25
Autoclave		20
Autoclaves-Desk top		10
Blades	assorted sizes	1000
Blade - Handles		100
Buckets-Kick Stainless Steel		500
Cold Sterilization equipment with supplies		50
Disposable Dressing set		1000
Disposable suture sets		1000
Disposable laparotomy set		500
Electrosurgical generator		25
Instruments	Sets	50
Kidney Dish		300
Laparotomy Sets		500
LSCS Sets		500
Orthopaedic splints (various)		150

Orthopaedic plates, screws and pins		for 200 procedures
OT Basic Pack		500
OT Beds/Surgical Beds		50
OT Lights/Surgical Lights (Portable)		100
Scalpel		300
Scope Monitor		5
Sterilizers		10
Sterile Blades	20, 22, 10, 11	500 ea
Sterile Lap Sponges		1000
Sterilization/ Autoclave tape		300
Sterilization trays		50
Surgery Sets (lap set, Suture Sets, Delivery Sets); ortho set		500 ea
Sutures – 1 Vicryl PB, various		300 ea
Systems-Medical gases and exhaust		10
Tabletop autoclave machine		15
Tables-Operating Theatre General Surgery		10
Tables-Operating Theatre Gynaecology		10
Tables-Operating Theatre Orthopaedic		10
Trays-Dressing Stainless Steel		Assorted
Trays-Procedure Stainless Steel		50
Ultrasonic Waster		35
Umbilical Cord Clamps		1000
Vaginal Speculum		200
X-Ray Selected Sponge		500

## Medical Facility (Hospital) Furniture & Fixtures

Item	Specification	Quantity
Beds-Hospital, Emergency Room		50
Beds-Hospital, ICU		50
Beds-Hospital, electric		100
Beds-Hospital, standard		200
Beds - Examination		500
Bedside Table		1000
Cardiac Table		500
Consultation Desks		50
Cots for adults		100
Drug Cupboard		10
Drug Cart		500 each
Examination Couches		30
Mattresses	Medical	600 each

Mosquito nets for hospital beds		20000
Repair roof of facility (plus temporary sheets and tarps for coverage)		12
Screens-Portable/Privacy		1000
Stools-Step		50
Tables-Cardiac (Over Bed)		60
Tent for waiting area		1
Trolley - Medication		100
Trolley-Medical Records		20
Wall Clock		20

## Medical Sundries & Supplies

Item	Specification	Quantity
Alcohol	1 Gal	500
Band-aids	Assorted sizes	1000
Bandages & Gauze-Assorted		for 500 patients
Bandages (Crepe & soft)	Assorted sizes	for 300 patients
Body Bags		400
Catheter change supplies		for 300 patients
Condoms		1000
Cotton Swabs		1000
Diapers	Babies - Adults assorted Sizes	
Disposable urine cups		1500
Dressing kits (Supplies: Bandages, gauze, cotton, tape; instruments: scissors, blades, trays, kidney dish; cleaning agent - normal saline, betadine)		for 1500 patients
First Aid Kits		100
Headlamps		50
Humidifiers Bottles		200
Lubricant Gel		100 cases
Medical Waste Bags (red)	Assorted sizes (S/M/L)	1000 ea
Micropore Tapes	Assorted sizes	300 ea
Oral Rehydration salts		10000 pkts
O2 Masks & Canulas	Assorted sizes	500 ea
Patient Name tags		5000
Sharps containers		500
Speculum		300
Splints and braces	Assorted sizes	100 ea
Tongue Depressors		1500
Urostrap Elastoplast		20 cases
<b>Infusion &amp; Medication Delivery</b>		
Item	Specification	Quantity
Branula	assorted sizes	2000
Catheters	all sizes	1000

Drainage Bags		1000
IV Drip Stands		1000
IV Fluids (Various: Normal Saline, Dextrose, lactated ringers)		2500
IV Infusion Pumps		1000
IV giving sets		2000
Syringes & Needles	Various Sizes	2000
Syringes	assorted sizes	2000
Syringe Pumps		500
<b>Respiratory &amp; Airway Management</b>		
<b>Item</b>	<b>Specification</b>	<b>Quantity</b>
Airways-Oropharyngeal & Nasopharyngeal		100
Bag-Valve-Mask		100
C-PAP Consumables (Nasal masks, Nasal Prongs, Bonnet, Head Gear)		1000 ea
CPAP Machines		50
Chest Tubes and Connection	Assorted sizes	100
Cylinders-Transport Oxygen (C/D)		100
Devices-High Flow Nasal Oxygen		100
Humidifiers		200 units
Laryngoscopes with blades		50
Machines-Suction		50
Machines-Suction Portable		50
Meters-Oxygen Flow		150
Nebulizer Sets		1000
Nebulization Masks	Paediatric and adults	200 ea
Nebulizer with tubing		200 units
Nebulizers Incubators		30 units
Oxygen concentrator		50
Oxygen Cylinders		1000
Oxygen Delivery system		5000 units
Oxygen Flow meters		1000
Oxygen Generator		100
Oxygen Masks		200 ea
Oxygen Masks- Rebreather masks		300
Oxygen Regulators		100 units
Spacers		500
Suction catheter and tips		500
Suction machines		50
Transport Incubator		50
Transport Oxygen Cylinders (C/D)		80 each
Ventilators-Adult		10
Ventilators-Transport Adult		10
Ventilators-Transport Paediatric		10



Video Laryngoscope		25

## Laboratory Equipment

Item	Specification	Quantity
Blood Products Freezer		10
Blood Products Refrigerator		10
Blood Warmer		100
Centrifuge , ID Centrifuge, Ser-Fuge Centrifuge		10
Chemisry Analyser		10
Coagulation Analyzer		10
Haematology analyser		10
Lab Rotator		10
Microscope		10
Pipettes		5000
Platelet Agitator		10
Rh Viewbox		10
Refrigerators-Drug		20
UPS for lab and sensitive equipment		100
Vaccine Refrigerators (2-8°C)		5
PCR Leptospirosis/Dengue (LAB)		for 500 tests

## Communication Equipment and Supplies

Item	Specification	Quantity
Cellphones		50
Computers - Desktop		50
Computers - Laptops		50 ea
Emergency Lights		100
Generators		60
Industrial Power bank	One per parish; one per region	20 ea
Printers	Heavy duty	20
Protectors-Surge		50
Rechargeable Batteries		50
Satellite Phones for Hospital and Health Department		45
Server		20

Tablets (computer device)	for health assessment	120 units
---------------------------	-----------------------	-----------

## Patient Transport & Other Vehicles

Item	Specification	Quantity
<b>Patient Transport</b>		
Ambulances - Type 2		40
Ambulances - type 3		10
Backboards w/head blocks		200
Backboards - Patient Transfer with head blocks and splints		100
Cervical collars	various sizes	200
OT Gurney		100
Lift-Patient Transfer (Hoyer lift)		15
Mobile Clinic		15
Stair Chairs		200 ea
Stretchers		1000
Trolleys - ER		50
Wheelchairs		500
Wheelchairs-Adult		400
Wheelchairs-Children		100
<b>Other Vehicles</b>		
Coaster Buses	30 seater	20
Pick Up Trucks - Utility		50
Pick UP Trucks - Vector Control		14

## Personal Protective Equipment (PPE) & Linen

Item	Specification	Quantity
Coverall		1000
Beard Guards		200
Crocs	Assorted Sizes - Male & Female	200 pairs each (male and female)
Disposable Examination gloves-Large-powder free	100 pk	60000
Disposable Examination gloves-Medium-powder free	100 pk	60000
Disposable Examination gloves-Small-powder free	100 pk	30000
Disposable Examination Gowns	Assorted sizes	120000
Disposable caps		100000 each
Disposable Linen		5000 each
Ear Muffs		1000
Face Shields		2000

Gloves	Sterile (assorted sizes) / 100 pk	1000 boxes
Gloves	Nitrile (assorted sizes) / 100 pk	500 boxes
Goggles		1000
Gowns		1000
Hair Nets		200
Ice Packs		1000 ea
Ice Packs		50
Insulated cold room gloves		50 pairs
Industrial Gloves		1500
Linen		2000 sets
Linen - Disposable		5000
Linen - Reusable		2000
Masks-Medical/Surgical		100000
Masks-N95		100000
Overshoes/PRS		200000
Respirators		4000
Scrubs	Assorted Sizes	2000
Sterile Drapes		1500

## Pharmaceuticals

Item	Specification	Quantity
ACYCLOVIR SUSPENSION 200MG/5ML /125ML		250
ACYCLOVIR TAB 400MG /100PK		600
Albendazole Syrup		8000
Albendazole Tablet 200mg/2pk		5000
AMOXI-CLAV INJ 1.2G /VIAL		80000
AMOXI-CLAV SUSP 228.5MG/5ML /100ML		5000
AMOXI-CLAV SUSP 457MG/5ML /70ML		5000
ATORVASTATIN TAB 10MG /30PK		50000
ATORVASTATIN TAB 20MG /30PK		80000
ATORVASTATIN TAB 40MG /30PK		60000
BECLOMETHASONE INH 50MCG /200DOSES		8000
CARBAMAZEPINE TABLET 200MG (TEGRETOL)/100PK		10000
CARVEDILOL TAB 6.25MG /30PK		30000
CEFUROXIME INJ 1.5G /VIAL		10000

CISATRACURIUM INJ 10MG /5ML		6000
CLINDAMYCIN INJECTION 150MG /ML/2ML/VIAL		20000
CLOPIDOGREL BISULFATE TABLET 75MG /30PK		40000
Clotrimazole Cream		20000
CLOXACILLIN INJECTION 1G /VIAL		500
GABAPENTIN CAP 300MG /100PK		8000
GLYCERYL TRINITRATE TABLET 0.6MG/100PK		1300
GRISEOFULVIN TABLET 125MG/150PK		40
GRISEOFULVIN TABLET 500MG)/1000PK		50
IVABRADINE TAB 5 MG (PROCORALAN)/56PK		2000
IVIG human Immunogloblin Inj. 5G		1200
Tetanus Immunogloblin Inj. 250IU	Assorted: Family & Personal	100
Ketoconazole Cream		5000
Ketoconazole Shampoo		10000
LEVODOPA 250MG+ CARBIDOPA 25MG TABLET/100PK		800
Loratadine Syrup /100ml		12000
Loratadine Tablet 10mg/100pk		8000
METHYLPREDNISOLONE SODIUM SUCCINATE INJ. 500MG /VIAL		1200
MILRINONE INJ 1MG/ML /10ML		600
MONTELUKAST TAB 10MG /30PK		4000
MONTELUKAST TAB 4MG /30PK		2000
MUPIROCIN OINT 2% /15GM		20000
PARACETAMOL LIQUID 125MG/5ML /120ML		3000
PARACETAMOL TAB 500MG /100PK		40000
SILVER SULPHADIAZINE CREAM 1% /30G		4000
SIMVASTATIN TABLET 10MG/ 20PK		1200
SIMVASTATIN TABLET 20MG /30PK		18000



SODIUM VALPROATE CHRONO TABLET 200MG (EPILIM)/30PK		8000
SODIUM VALPROATE SYRUP 200MG/5ML (EPILIM)/300ML		1500
SUXAMETHONIUM CHLORIDE INJ 50MG/ML /2ML		6000
Terbinafine Tablet 250mg/30pk		4000
TAMSULOSIN XL CAPSULE 400MCG /30PK		30000

## Water, Sanitation & Hygiene

Item	Specification	Quantity
Alcohol		
Aquatabs 33mg (Sodiumdichloroisocyanurate)		5000000
Betadine		
Bucket		100000 ea.
Buckets/Collapsible Water Storage Containers - 5L		100000
Buckets (5ltr to 1 Gals) with lid and spigot (2 per family)		160000
Capacitors of the pump for toilets (including two spares)		3
Chemical Closet (Portable toilets)		200
Chlorine		40 ea
Chlorine Tablets		1000 Boxes
Chlorine tables for in-line application		100
Chlorine Test Kit - Water Comparators 5ml		100
Collapsible water storage containers		50000 ea
Cleaning Solutions	Liquid soap and bleach	100 gal. each
Denaturant		300 gallons/1336L
Diagnostic kits for waterbourne diseases		50
Diesel for tank		1
Dissolve Oxygen Meters		20
DPD Free Chlorine Reagent* (5ml)		26 tubs
DPD Testing Tablets		5000 ea.
Hand sanitizer		
Heavy Duty garbage bags	Assorted sizes.	Sm - 15,000 pks M - 15,000 pks Lg - 20,000 pks XL - 20,000 pks
Hibitane with Alcohol		5000
Hibiscrub (Chlorobexidine		
Hygiene Kits	Assorted: Family & Personal	50000 ea.

Organic Vapour (Chemical) Cartridge		1500
Presence/Absence Coliform Test Kits and Reagents		100
Repair HDPE tanks and piping		9
Repair roof of facility (plus temporary sheets and tarps for coverage)		12
Repair roof of rainwater harvesting cistern		1
Reverse Osmosis System		5
Sample Bottles (for water quality testing)		200 ea
Sample containers		500
Soap for handwashing stations		70
Turbidity Meters		50 ea
Ventilated Improved Latrines Pit		400
Water purification kits		5000 ea.
Water Sample Bottle		400
Water Sample Dippers		100
Water storage tanks 1000 gal		10000 ea.
Water Systems (RO)		20

## Vector Control

Item	Specification	Quantity
Aquatain AMF		50 drums
Back Mounted Spray Pumps		100 ea
Bafaloo Turbine Airblast		13
BIT Larvicides		500
Chemical (Malathion, Deltamethrin)	Malathion	100 drums
	Deltamethrin	100 drums
Cold room jackets with hoods	Assorted sizes	50
Drum covers		40000
Handheld Foggers		100 ea
Larval Dipper & Dippers		350
Long Rubber gloves (for sampling)		300 ea
Natular DT Larvicides		1000
Repellent		1000 boxes
Rodenticides		1000 bags/boxes
Thermal Foggers		100
ULV Flush (for ULV machines)		200 bottles (10L)
Ultra low volume mounted foggers		60

## Emergency Response Equipment

Item	Specification	Quantity
Emergency kits with resuscitation equipment		20
Field Hospital Equipment		2
Home visit bags		200
Vest (MOHW Branded)		100

## Dental Equipment

Item	Specification	Quantity
Cavitrons (ultrasonic scalers)		35
Compressor		35
Dental Chairs		50
Dental Chair lights Unit		35
Dental materials (composites, cements, impression materials)		1000 patients
Dental Suction unit		35
Dental X-Ray unit		35
Ultrason sonic waster		35

## Nutrition

Item	Specification	Quantity
2 decks deep depth gas convection oven		4
20 pound table top scale		4
300kg bulk weighing ingredient floor scale		4
3 compartment stainless steel sink with faucets, backsplash and double drain board, hose and nozzle		4
Body fat calipers 80mm		72
Breast Models		700
Breast Pumps		1000
Commercial foot pedal waste bins size 68L (16 yellow, 4 red, 12 beige)		32
Cups for Infants		5000
Infant and Young Child Feeding Integrated course manual		700
Food Items		
Food Models		36 sets
Industrial can opener		4

Mobile Kitchen		5
MUAC Z-score Tapes: •2-59 months •5- 18 years •Pregnant and post-partum women		800
Portable Length/height board		72
Reproduction of Education material -Social media cards -Brochures/ pamphlets		15
Set of 6 colour coded cutting boards		8
Slant top mobile ingredient covered storage bins with sliding lids 21 Gal 30Lx12WX26D		16
Stainless steel, single bowl, wall hung hand wash sink, hands and knee free, marine edge features Dimension 17'LX15'WX13'D		8
Stainless steel reach in 2 section industrial refrigerator		4
Stainless steel utility cart - 3 tier		8
Stomach size models		700
Storage cabinets with lock		36
Tablets		120

## Tools & Supplies

Tools & Supplies		
Item	Specification	Quantity
Axe		100
Batteries	Assorted sizes	AA - 500 cases AAA - 500 cases C - 500 cases D - 1000 Cases
Battery Drill Set	with impact drill	12 ea.
Caution Tape		50 rolls
Chainsaw	10 in & 14 in	100 ea
Claw Hammer		700 ea
Cloth Gloves		200 pairs
Combination Pliers		700 ea
Come along 3 ton		12 ea.



Duct Tape		150
Flare Tail Butcher's knives		30
Flashlight		700
Galoshes		7- 200 pairs 8- 200 pairs 9- 200 pairs 10- 200 pairs 11- 200 pairs 12- 200 pairs 13- 200 pairs 14- 200 pairs
Generators		60 ea
Grinder		50 ea
Hard Boots		1200
Hard Hats		500
Hard toe Boots	Assorted Sizes - Male & Female	Male sizes: 7 x 30 pairs 8 x 40 pairs 9 - 10 x 50 pair 11 - 100 pairs 12 - 100 pairs 13 -100 pairs Female sizes: 5 x 30 pair 6– 11 x100 pairs 12 x 50 pairs
Helmets		1000
Heavy Duty Gloves		2000 pairs
Heavy Duty Pry Bar		700 ea
Hooks		200
Igloos	Assorted Sizes	S-60 M-30 L-60
Igloos (5 Quarts) wheeled		26
Machete		100
Mag lights (handheld)		500
Miners Head Light (head mounted)		500
Raincoats	Assorted sizes	S – 200 ea. M – 200 ea. L – 200 ea. XL – 200 ea. XXL – 200 ea.
Pickaxes with sticks		700 sets
Pipe Wrench	10 in/14 in/18 in	700 sets
Power Saw		30
Screwdriver set	One per facility	500 sets
Sharpening Steels		30
Shovel		100 ea
Sledge Hammer		700 ea
Socket Set		700 sets
Tape Measure		700 ea
Tarpaulin	Assorted Sizes	2000 ea

Waterboots		7- 200 pairs 8- 200 pairs 9- 200 pairs 10- 200 pairs 11- 200 pairs 12- 200 pairs 13- 200 pairs
------------	--	--

Waste Management

Item	Description	Quantity
Repair roof of waste storage station		1
Resume waste collection		14
Secure waste containers (medical)		8