

Situation Report #24 – 13-19 December 2025

HIGHLIGHTS

- The Ministry of Health and Wellness (MOHW) is implementing the **Health Hurricane Melissa Response Programme (HHRP)** to restore essential health services, build back better and reduce outbreak risks. With the support from PAHO, ten healthcare facilities in the five most affected parishes are being identified for repairs.
- As of 18 Dec 2025, the MOHW reported a total of **98 suspected** and 30 confirmed leptospirosis cases post-Melissa, with 12 deaths – of which 7 are confirmed leptospirosis-related post Melissa from the 3 parishes of St. James, St. Ann and St. Catherine.
- The 12th **Health Cluster Coordination meeting**, co-chaired by the MOHW and PAHO, was held on 16 December 2025. The MOHW provided an update on their Risk Communication and Community Engagement strategies, plans and activities.
- **Emergency Medical Teams (EMT)** Barbados Defense Force remains operational the Savanna-la-Mar, while the field hospital donated by Samaritan's Purse continues to operate at Black River Hospitals under the management of the MOHW. As of 19 December, all deployed international EMTs have reported 12,297 consultations, 381 surgeries and 366 admissions.



PAHO team along with Dr. Dawkins-Wright, Director, Emergency, Disaster Management and Special Services Branch, MOHW, Jamaica, during site inspection at the Barbados Defense Force EMT during their set up.

Source: PAHO/WHO Jamaica

IN NUMBERS

Approx. 2.8m (entire population)
Potentially exposed¹

45 confirmed deaths from Hurricane Melissa with **32 under investigation**²

98 suspected cases of Leptospirosis (30 confirmed) post Hurricane Melissa; **12 deaths from Leptospirosis** (7 confirmed)³

340 Persons injured⁴

11 Persons missing⁵

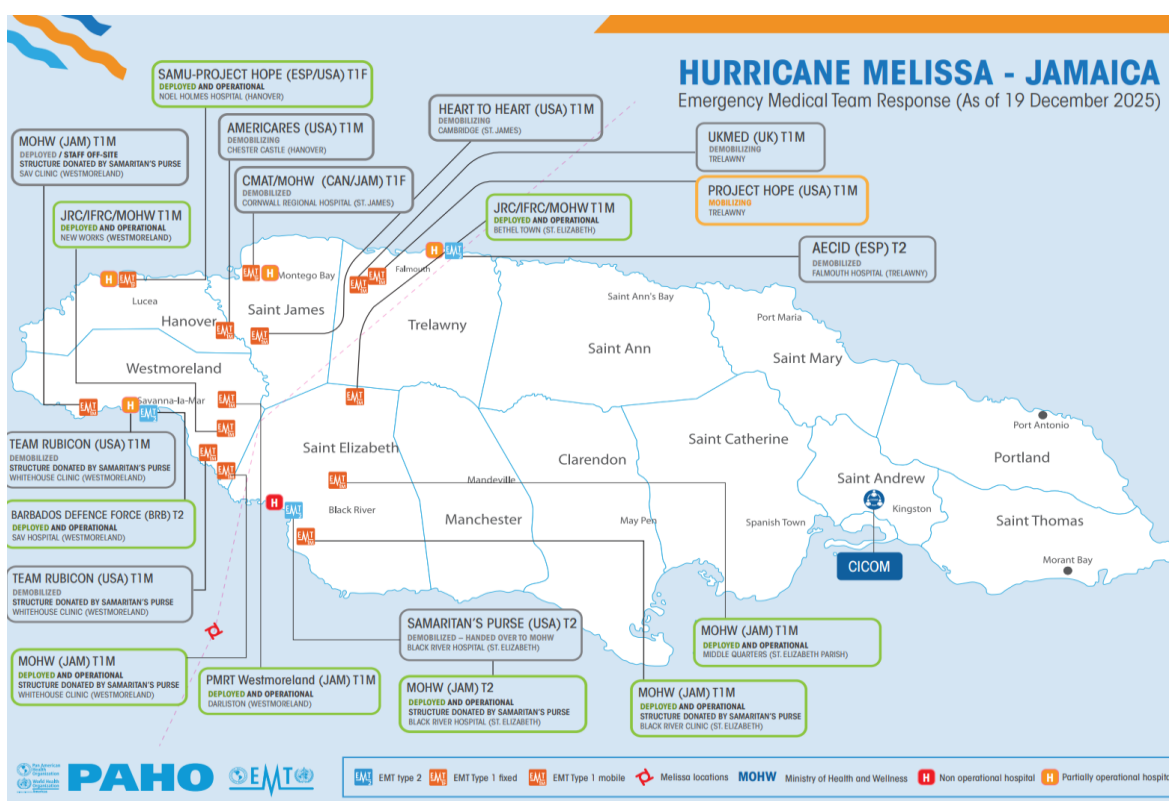
16% of customers without electricity,
12.5% without water⁶

86 of 881 Emergency shelters activated in 7 parishes; Occupancy of 832 persons⁷

1: Statistical Institute of Jamaica data

2,-3,5,6,7: NEOC Situation Report #52 (18 December 2025, 8:00 p.m.)

4: Health EOC Situation Report #39 (9 December 2025)

Map 1: PAHO-facilitated Emergency Medical Teams Response as of 19 December 2025


Emergency Medical Teams (EMT)

- **Two Type 2 EMTs still in operation:** Barbados Defense Force (BDF) EMT continues to operate at Savanna-la-Mar Public General Hospital (Westmoreland). MOHW is managing the Type 2 field hospital donated by Samaritan's Purse at Black River Hospital.
- **Seven Type 1 EMTs are still proving medical services** in St. Elizabeth, Westmoreland, and Hanover Parishes. In recent days, seven other Type 1 EMTs have demobilized as their deployment periods ended.
- **Clinical activity reported by international EMTs** through the Minimum Data Set (MDS) includes: 12,297 consultations; 381 surgeries, of which 145 were major procedures; 366 patient admissions; 1,035 occupied bed-days; 27 births; and 17 cesarean sections, including cases involving high-risk pregnancies.
- EMT sites are integrated into local service delivery and national surveillance as sentinel facilities.
- **Surge capacity:** The MOHW continues to rely on temporary surge capacity while permanent infrastructure is being restored. However, with an imminent demobilization window as many EMTs approach their end dates, there is a significant risk to maintaining this capacity—making continued EMT support, alongside a smooth transition back to national systems, imperative.

Recovery Planning/ Transition:

- MOHW is implementing Phase 1 – rapid repair of priority health centers – of the Health Hurricane Response Programme (HHRP). The programme's objective is to restore health services in the most affected areas, build back better, and reduce the risk of post-hurricane disease outbreaks.
- **The programme is anchored by 5 components:** infrastructure damage assessment, rapid repairs, enhanced surveillance and environmental health, mental health and psychosocial support, and staff welfare.
- Parish Managers **are identifying and prioritizing 10 healthcare facilities** with the support of PAHO to urgently repair in the five most affected Parishes. Planned work includes repairs of roofs and electric and water systems; windows and door replacements; provision of generators, fuel tanks and medical equipment and supplies.



SURVEILLANCE

- As of 18 Dec 2025, the MOHW reported a total of **98 suspected** leptospirosis cases post-Melissa. They continue to report 30 confirmed cases with 12 deaths – of which 7 are confirmed leptospirosis-related post Melissa from the 3 parishes of St. James, St. Ann and St. Catherine.
- MOHW continues to investigate and monitor diarrhea, fever conditions and symptoms of water-borne (leptospirosis) and vector-borne diseases (dengue fever), especially in the affected communities



MENTAL HEALTH AND PSYCHOSOCIAL SUPPORT

- Capacity building activities continue on Psychological First Aid (PFA) as part of the MHPSS response of the MOHW with support from various organizations.



LABORATORY SERVICES

- Testing of samples continues in the most affected parishes, although some challenges are experienced in a few health facilities.



RISK COMMUNICATIONS AND COMMUNITY ENGAGEMENT

- MOHW Environmental Health Team published various key messages on leptospirosis, dengue, food safety, mental health among others. <https://online.fliphtml5.com/MOHWHP/tqwl/#p=1>
- The MOHW continues islandwide risk-communication using town criers, social media, churches, household outreach, CBOs, and digital materials, focusing on the following:
 - Prevention of leptospirosis, dengue, tetanus.
 - Safe and hygienic practices – safe drinking-water, avoid unsafe springs, hand washing practices.
 - Injury Prevention including carbon monoxide poisoning; Nutrition for vulnerable groups, e.g. children, pregnant and lactating women.



NUTRITION

- The MOHW with the support of UNICEF is distributing high-nutrient feeds and snacks for children, pregnant and nursing mothers.
- There is ongoing screening and treatment of malnutrition of elderly adults, lactating mothers and children with the support of the UNICEF.
- Nutrition services in the affected area are being provided through field clinics and shelter visits, including assessments of children and pregnant women. Home visits for high-risk babies is difficult because of the dislocation caused by the hurricane.



INFRASTRUCTURE

- PAHO virtual Map with status of health facilities:
<https://who.maps.arcgis.com/apps/instant/sidebar/index.html?appid=9226e33620e5458290a820b60f1b3e27>. The map also includes layers showing hurricane wind strength and path, as well as population density.



WASH & ENVIROMENTAL HEALTH

- As of 16 December, over 80,000 people (12.5% of customers) remain without water supply. Twelve new water trucks continue to distribute water to affected communities and filling stations have been set up in St. Elizabeth Parish.
- Chlorine Residual Levels and Bacteriological levels are not yet at health standards for domestic water systems in some communities. Ongoing water treatment in western parishes; facilities set up for fresh and brackish water systems to supply communities.
- Solid waste management to be increased in affected areas to reduce the risks of vector and water borne diseases.



SHELTERS

- As of 18 December 2025, 86 of 881 emergency shelters islandwide are activated, accommodating 832 persons. Data includes inputs from 7 of 14 parishes: Manchester, St. Elizabeth, Westmoreland, St. Ann, Trelawny, St. James, and Hanover.
- MOHW continues to monitor conditions at shelters and provide medical and psychosocial services and WASH kits.
- The Government, through the Social Development Commission (SDC), has conducted a shelter transition survey in active shelters to identify needs of shelterees and is working to secure temporary accommodation and housing.



HEALTH NEEDS

- MOHW-approved **Health Needs List** (19 November 2025) is available in PAHO's Jamaica Situation Report #22, available [online](#).



RESPONSE

GOVERNMENT RESPONSE:

- The Government has designated the Urban Development Corporation (UDC) to lead the cleanup operations in Black River, following the Prime Minister's directive assigning responsibility for this phase of post-Hurricane Melissa recovery. The directive was issued during a site visit, where the Prime Minister emphasized the need for timely implementation, safeguarding public health, and restoring normal activity within the town.

PAHO RESPONSE:

- PAHO is supporting the Ministry of Health in conducting a post-hurricane risk assessment.
- PAHO organized a Webinar on "Leptospirosis – Epidemiological surveillance, control, and prevention in the context of outbreaks" on 17 December 2025 with over 190 participants. The objective was to review and update strategies for leptospirosis detection, prevention, and control during outbreak response, focusing on epidemiological surveillance, laboratory detection (including diagnostic algorithms), infection prevention and control, and rodent control.
- PAHO, in collaboration with MOHW's Environmental Health Unit, hosted a webinar on "Evaluation of Fungal Contamination in Indoor Buildings" (17 – 18 December), engaging over 170 participants (many health care workers), to address mold growth in health facilities, building material issues, and challenges with storing patient records on paper.
- PAHO continues to co-chair the Health Cluster Coordination meeting. The 12th meeting was held on 16 December 2025. The MOHW provided an update on their Risk Communication and Community Engagement

strategies, plans and activities. 41 out of 45 registered partners on the Partners Platform (<https://shiny.paho-phe.org/melissa-partners/>) are currently active as teams complete their deployments. The dashboard is also accessible on the PAHO website.

- PAHO continues to co-facilitate the 4 health sub-clusters: Health Services/EMTs; MHPSS; Infrastructure Rehabilitation; and WASH in health facilities which is integrated into the overarching WASH Cluster for the response led by UNICEF PAHO. Each group met during the week of 14 December 2025 to further coordinate services and allocate resources.
- List of essential health emergency items procured and delivered by PAHO to ensure continuity of health services is available [online](#) in PAHO's Jamaica Situation Report #22.