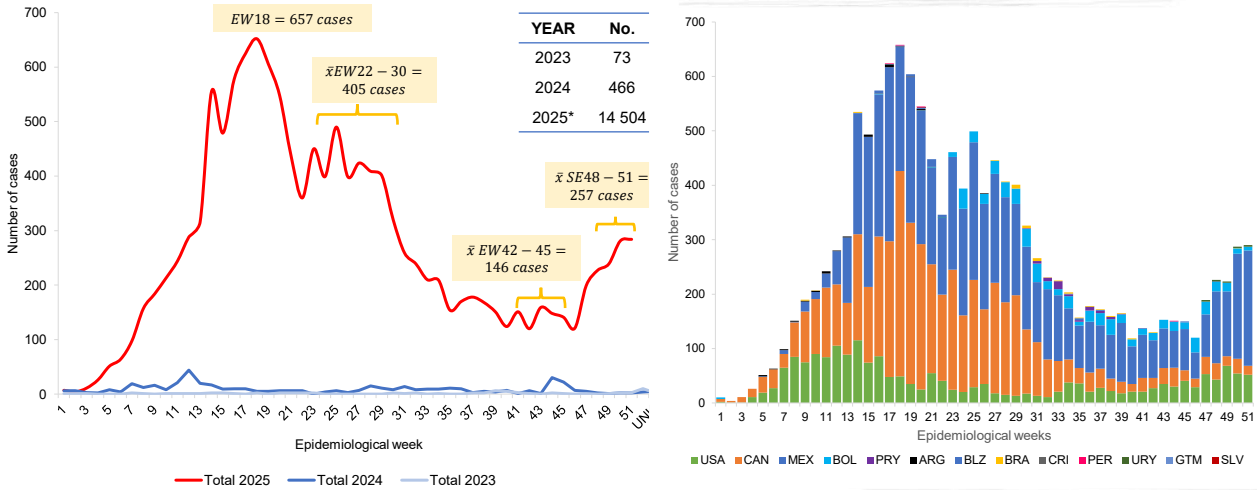




### Number of confirmed measles cases by epidemiological week. Region of the Americas, 2024-2025\*



Source: Immunization Data Warehouse and country surveillance reports sent to PAHO. Measles Cases and Outbreaks, CDC website at: <https://www.cdc.gov/measles/cases-outbreaks.html> (data as of 2 January 2025). \* Data as of epidemiological week 53 of 2025. The epi curve of 2025 goes up to EW 51 to avoid underreporting in the last notified weeks.

**Table 1**  
Classification of Suspect Measles, Rubella, and Congenital Rubella Syndrome (CRS) Cases for Week 1-53, 2025

Subregion and Country	Susp. Cases 2025	Measles Confirmed 2025				Year/Week Last Conf. Measles case	Rubella Confirmed 2025			Year/Week Last Conf. Rubella Case	Diagnosis of Discarded Cases 2025		Congenital Rubella Syndrome			Year/Week Last Conf. CRS Case		
		Clin.	Lab.	Epi. link	Total		Clin.	Lab.	Total		Dengue	Others	Susp.	Conf.	CRI*			
AND	BOL <sup>A</sup>	2590	0	595	...	595	2025-53	0	0	0	2006-03	0	1904	3	0	0	0	...
	COL	1638	0	0	...	0	2020-09	0	0	0	2012-31	1	1563	1285	0	0	0	2005-34
	ECU	411	0	0	...	0	2018-33	0	0	0	2004-49	16	351	56	0	0	0	2011-14
	PER	773	0	4	1	5	2025-44	0	0	0	2009-04	1	709	0	0	0	0	2007-16
	VEN	1926	0	0	...	0	2019-48	0	0	0	2007-51	197	1729	0	0	0	0	...
BRA	BRA <sup>A</sup>	4359	0	35	3	38	2025-50	0	0	0	2014-40	0	3945	23	0	0	0	2009-34
CAP	CRI	98	0	1	...	1	2025-20	0	0	0	2001-39	0	97	71	0	0	0	...
	GTM	325	0	1	...	1	2025-41	0	0	0	2006-31	0	322	0	0	0	0	2005-00
	HND	419	0	0	...	0	1997-29	0	0	0	2004-11	26	391	30	0	0	0	2001-00
	NIC	64	0	0	...	0	1994-14	0	0	0	2004-19	16	41	8	...	...	0	2005-00
	PAN	60	0	0	...	0	2011-20	0	0	0	2002-48	0	57	0	0	0	0	...
	SLV	961	0	1	...	1	2025-52	0	0	0	2006-30	0	961	75	0	0	0	2001-00
CAR	CAR	494	2	13	29	44	2025-45	0	0	0	2008-18	0	403	0	0	0	0	1999-00
LAC	CUB	1891	0	0	...	0	2019-24	0	0	0	2004-06	0	1891	0	...	...	0	1989-10
	DOM	212	0	0	...	0	2011-18	0	0	0	2019-08	3	207	0	0	0	0	2007-00
	HTI	337	0	0	...	0	2001-39	0	0	0	2006-21	0	133	154	0	0	0	...
MEX	MEX	15340	0	5693	459	6152	2025-52	0	0	0	2018-14	0	7457	0	0	0	0	...
NOA	CAN	NR	380 <sup>B</sup>	2691	2354	5425	2025-53	0	0	0	2023-36	...	NR	NR	NR	0	0	2024-00
	USA	NR	...	1412	...	2144 <sup>C</sup>	2025-53	0	0	0	2024-35	...	NR	NR	1	...	...	2025-38
SOC	ARG	182	0	36	1	37	2025-48	0	0	0	2019-47	0	145	0	0	0	0	2009-27
	CHL	269	0	0	...	0	2023-32	0	0	0	2019-14	0	239	47	0	0	0	...
	PRY	2127	0	36	13	49	2025-39	0	0	0	2005-21	3	2002	6	0	0	0	2003-06
	URY	...	0	12	...	12	2025-49	0	0	0	2001-37	0	0	0	0	0	0	...
<b>TOTAL</b>		<b>34476</b>	<b>382</b>	<b>10530</b>	<b>2860</b>	<b>14504</b>	--	<b>0</b>	<b>0</b>	<b>0</b>	--	<b>263</b>	<b>24547</b>	<b>1758</b>	<b>1</b>	<b>0</b>	--	--

\*Congenital Rubella Infection.

...No updated report received; NR-not reporting

(A) Number of suspected and discarded cases were based on provisional aggregate data.

(B) Includes the probable cases reported by Canada under the clinically confirmed column, due to alignment with PAHO's case definition. Click here (<https://health-infobase.canada.ca/measles-rubella/#:~:text=While%20all%20confirmed,all%20provinces/territories>) for more details regarding probable cases reporting in Canada.

(C) Measles Cases and Outbreaks, CDC website at: <https://www.cdc.gov/measles/cases-outbreaks.html> (Data reported on 6 January 2026).



## Measles, Rubella, and Congenital Rubella Syndrome Surveillance in the Americas

Vol. 31, No. 53

**Table No.2**  
Infection Source of Measles and Rubella Confirmed Cases  
for the Period of Weeks 1-53, 2025

Subregion and Country		Measles				Rubella		
		I	IR	En.	U	I	IR	U
AND	BOL	3			592			
	COL							
	ECU							
	PER	3			2			
BRA	VEN							
	BRA	9	25		4			
	CRI	1						
	GTM				1			
	HND							
CAR	NIC							
	PAN							
	SLV	1						
	CAR	6	36		2			
LAC	CUB							
	DOM							
MEX	HTI							
	MEX	218	3901		2033			
NOA	CAN	98	5031	268	28			
	USA	555	1414		175			
SOC	ARG	5	29		3			
	CHL							
	PRY	1	48					
	URY				12			
<b>TOTAL</b>		<b>900</b>	<b>10484</b>	<b>268</b>	<b>2852</b>			

I: Imported; IR: Import-related; En: Endemic case; U: Unknown.

**Table No.3**  
Measles/Rubella Suspect Cases Under Investigation  
for the Period of Weeks 1-53, 2025

Country	Pending Cases 2024	Cumulative 2025	Week of Onset						
			1-48	49	50	51	52	53	% Pend. cases
BOL	19	5	5	0	0	0	0	0	0
COL	0	74	26	12	14	16	6	0	5
ECU	0	44	44	...	...	...	...	...	11
PER	0	58	37	5	2	5	9	0	8
VEN	0	0	0	0	0	0	...	...	0
BRA	0	376	288	40	20	28	0	0	9
CRI	0	0	0	0	0	0	...	...	0
GTM	9	2	2	0	0	0	...	...	1
HND	0	2	0	0	1	0	1	0	0
NIC	1	7	7	...	...	...	...	...	11
PAN	1	3	3	...	...	...	...	...	5
SLV	0	0	0	0	0	0	0	...	0
CAR	0	47	47	0	0	0	0	0	10
CUB	0	0	0	0	0	0	...	...	0
DOM	1	2	2	0	0	0	0	0	1
HTI	96	204	200	2	0	1	1	0	61
MEX	136	1733	1256	65	63	144	205	0	11
CAN	NR	NR	NR	NR	NR	NR	NR	NR	NR
USA	NR	NR	NR	NR	NR	NR	NR	NR	NR
ARG	0	0	0	0	0	0	0	0	0
CHL	1	30	30	0	0	...	...	...	11
PRY	0	73	59	1	6	3	1	3	3
URY	3	0	0	...	...	...	...	...	0
<b>TOTAL</b>	<b>267</b>	<b>2660</b>	<b>2006</b>	<b>125</b>	<b>106</b>	<b>197</b>	<b>223</b>	<b>3</b>	<b>8</b>

... No updated report received; NR-not reporting

**Table 4**  
Indicators of Integrated Measles/Rubella Surveillance for Period of Weeks 1-53, 2025

Subregion and Country		Sites Reporting Weekly		% Suspected cases with adequate investigation	% Suspected cases with adequate sample	% Serum samples received in lab. ≤5 days	% Serum samples with lab. results reported ≤4 days	Rate of Suspected Cases Last 53 weeks (2025/01-2025/53)	
		Total Units	% This Week					Measles/Rubella (100,000 pop.) <sup>A</sup>	CRS (10,000 lb) <sup>a</sup>
AND	BOL <sup>B</sup>	4161	...	99	98	95	93	17.3	0.1
	COL	4693	100	87	90	85	95	3.1	0.0
	ECU	2184	...	66	93	90	77	2.2	2.1
	PER	6326	...	88	80	74	53	2.2	0.0
	VEN	13092	...	100	97	19	7	5.5	2.9
CAP	BRA <sup>C</sup>	...	...	76	80	82	88	2.0	0.1
	CRI	57	...	99	99	97	95	1.9	14.0
	GTM	1541	...	99	97	80	94	1.7	0.0
	HND	532	...	86	99	89	97	3.8	1.3
	NIC	185	...	92	100	98	100	0.9	0.6
CAR	PAN	295	...	83	100	95	100	1.3	0.0
	SLV	1333	...	92	78	98	99	15.1	0.0
	CAR	758	...	51	82	8	59	6.2	0.0
	LAC	CUB	168	...	100	100	92	100	17.3
MEX	DOM	247	...	75	97	86	81	1.8	0.0
	HTI	675	...	89	81	17	30	2.8	6.2
	MEX	20095	87	91	97	84	88	11.6	0.0
NOA	CAN	NR	NR	NR	NR	NR	NR	NR	NR
	USA	NR	NR	NR	NR	NR	NR	NR	NR
SOC	ARG	784	...	36	55	55	52	0.4	0.0
	CHL	811	...	68	78	89	94	1.4	2.7
	PRY	1489	77	82	92	94	97	30.3	0.4
	URY	155	...	0	0	0	0	0.0	0.0
<b>Total and Average*</b>		<b>59581</b>	<b>39</b>	<b>88</b>	<b>93</b>	<b>81</b>	<b>86</b>	<b>6.1</b>	<b>1.1</b>

... No updated report received; NR-not reporting

\*Weighted  
 (A) Source (population data): United Nations, Department of Economic and Social Affairs, Population Division (2024). World Population Prospects 2024, Online Edition.  
 (B) Indicators are calculated based on case-by-case reporting of 2173 suspected cases.  
 (C) Measles/rubella indicators correspond to epidemiological weeks 1-49 of 2025.