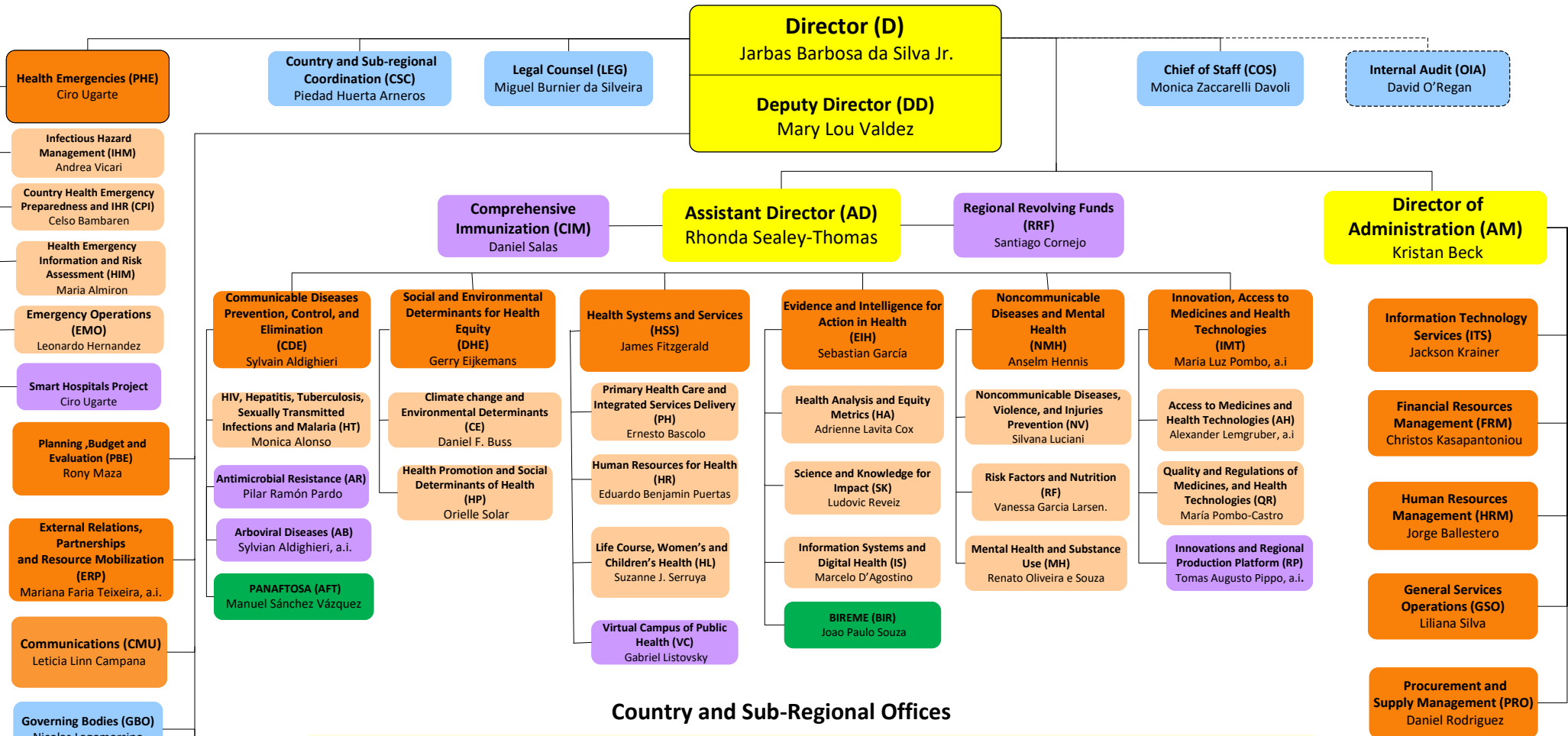


Organizational Chart of the Pan American Sanitary Bureau



Country and Sub-Regional Offices

ARGENTINA (ARG) Eva Jané-Llopis	BAHAMAS (BHS)* Eldonna Boisson	COLOMBIA (COL) Gina Tambini Gómez	HAITI (HTI) Oscar Martin Barreneche	PERU (PER) Maureen Birmingham
BARBADOS (BRB) & EASTERN CARIBBEAN COUNTRIES (ECC)* Amalia del Riego	*Also serves: • Turks & Caicos Islands	COSTA RICA (CRI) Alfonso Tenorio Gnecco	HONDURAS (HND) Ana Solis Ortega	SURINAME (SUR) Yafflo W. Ouattara
Also serves: • Anguilla • Antigua and Barbuda • British Virgin Islands • Dominica • French Guiana • French St. Martin • Grenada • Guadeloupe • Martinique • Montserrat • St. Kitts and Nevis • St. Lucia • St. Vincent and the Grenadines	BELIZE (BLZ) Karen Lewis-Bell	CUBA (CUB) Mario Cruz Peñate	JAMAICA (JAM) Ian Stein	TRINIDAD & TOBAGO (TTO)* Gabriel Vivas Francesconi
	BOLIVIA (BOL) Elena Vuolo	DOMINICAN REPUBLIC (DOM) Bernardino Vitoy, a.i	*Also serves: • Bermuda • Cayman Islands	*Also serves: • Aruba ,Bonaire, Curacao, Saba,Sint Eustatius,Sint Maarten
	BRAZIL (BRA) Cristian Morales Fuhrmann	ECUADOR (ECU) Sonia Quezada Bolaños	MEXICO (MEX) Jose Gerardo Moya	URUGUAY (URY) Caroline Chang
	CARIBBEAN SUB-REGION (CRB)* Leah-Mari Richards	EL SALVADOR (SLV) Marcelo Korc	NICARAGUA (NIC) Ana Elena Chávez	VENEZUELA (VEN) Armando De Negri, a.i
	CHILE (CHL) Giovanni Escalante	GUATEMALA (GTM) Alma Morales Salinas	PANAMA (PAN) Ana Riviére Cinnamond	
		GUYANA (GUY) Kim Eva Dickson	PARAGUAY (PRY) Haydeé Padilla, a.i	

