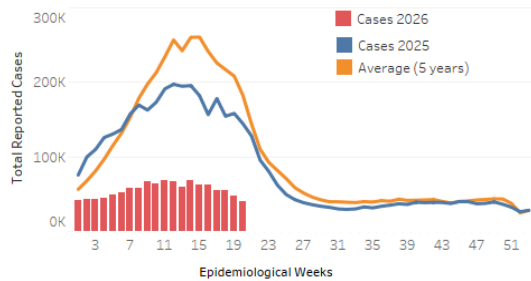


Report on the epidemiological situation of dengue in the Americas

As of epidemiological week 20, 2026. Update: Jun 10 2026 2:47PM (GTM-5)

In the epidemiological week (EW) 20 of 2026, a total of 1,105,019 suspected cases of dengue were reported, resulting in a cumulative incidence of 107 cases per 100,000 population. This represents a decrease of 64% compared to the same period in 2025 and 70% compared to the average of the last 5 years. Figure 1 shows the trend of suspected dengue cases as of EW 20.

Figure 1. Suspected dengue cases as of EW 20 in 2026, 2025 and average of the last 5 years. Region of the Americas.



Source. Health Information Platform for the Americas (PLISA). Data reported by the Ministries and Institutes of Health of the countries and territories of the Region.

Out of the 1,105,019 reported dengue cases in the Region, 295,048 cases (26%) were laboratory-confirmed, and 1,880 (0.2%) were classified as severe dengue. A total of 266 deaths have been recorded, resulting in a case fatality rate (CFR) of 0.024%.

20 countries and territories within the region reported dengue cases in epidemiological week (EW) 20, accounting for 40,806 new suspected cases. Of these, 33 were classified as severe dengue (0.1%), and 6 deaths reported, yielding a case fatality rate of 0.015%. The distribution of cases by country is detailed in Table 1.

Indicators corresponding to EW 20, 2026

- 40,806 suspected cases
- 10,262 lab confirmed cases (25.1%)
- 33 severe dengue cases
- 6 deaths
- 0.015% case fatality rate (CFR)
- 20 countries reporting cases

Indicators as of weeks 1 - 20, 2026

- 1,105,019 suspected cases
- 295,048 lab confirmed cases (26.7%)
- 1,880 severe dengue cases
- 266 deaths
- 0.024% case fatality rate (CFR)
- 44 countries reporting cases

Table 1. Dengue cases by countries and territories of the Americas reporting to PAHO in EW 20, 2026.

Country	Cumulative Cases	Cases for the Week
Argentina	51	1
Barbados	38	4
Bolivia	48,240	1,495
Brazil	811,075	41,226
Colombia	39,595	1,982
Costa Rica	907	114
Dominican Republic	413	27
Ecuador	12,078	958
El Salvador	1,923	98
Grenada	60	2
Guadeloupe	349	17
Honduras	3,194	209
Jamaica	103	4
Martinique	1,294	30
Mexico	20,636	1,160
Panama	3,331	160
Paraguay	7,876	270
Peru	20,107	2,257
Saint Barthelemy	0	0
Saint Lucia	4	0
Saint Martin	7	0
Saint Vincent and the Gre...	3	0
Suriname	416	3
Virgin Islands (US)	0	0
Total	971,500	50,017

Source. Health Information Platform for the Americas (PLISA). Data reported by the Ministries and Institutes of Health of the countries and territories of the Region.

Analysis by subregion

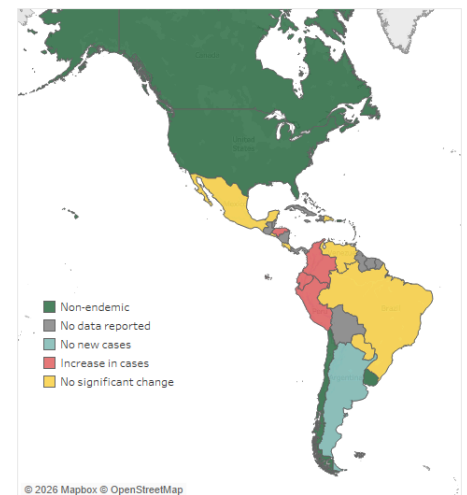
Central America and Mexico Sub-region. A total of 1,089 new suspected dengue cases were registered in EW 20. As of this week, the subregion exhibits a decrease of 54% compared to the same week in 2025 and 52% compared to the average of the last five years (Figure 3). The cases reported this week by Honduras represent an increase of 33% compared to the previous four epidemiological weeks (Figure 2).

Caribbean Sub-region. 100 new suspected dengue cases were registered in EW 20. As of this week, the subregion exhibits an increase of 62% compared to the same week in 2025 and 62% compared to the average of the last five years (Figure 4).

Andean Sub-region. In EW 20, 6,326 new suspected dengue cases were registered. As of this week, the subregion exhibits an increase of 14% compared to the same week in 2025 and 30% compared to the average of the last five years (Figure 5). The cases reported this week by Peru represent an increase of 21%, Ecuador of 19%, Colombia of 15% compared to the previous four epidemiological weeks (Figure 2).

Southern Cone Sub-region. 33,291 new suspected dengue cases were reported in EW 20. As of this week, the subregion exhibits an increase of 68% compared to the same week in 2025 and 73% compared to the average of the last five years (Figure 6).

Figure 2. Countries with an increase or decrease in dengue cases in EW 20, compared to the average of the last four weeks of 2026.



Source. Health Information Platform for the Americas (PLISA). Data reported by the Ministries and Institutes of Health of the countries and territories of the Region.

Figure 3. Total number of suspected dengue cases to EW 20 in 2026, 2025 and average of the last 5 years. Central America and Mexico Sub-region.

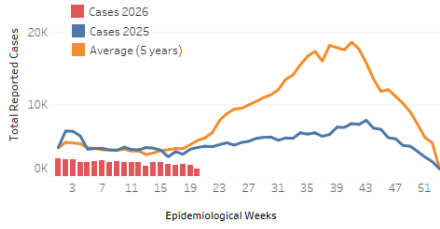


Figure 4. Total number of suspected dengue cases to EW 20 in 2026, 2025 and average of the last 5 years. Caribbean Sub-region.

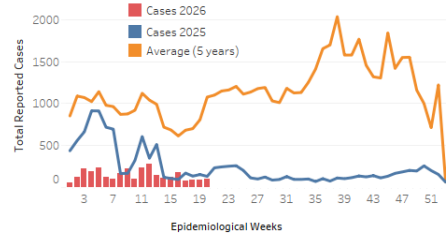


Figure 5. Total number of suspected dengue cases to EW 20 in 2026, 2025 and average of the last 5 years. Andean Sub-region.

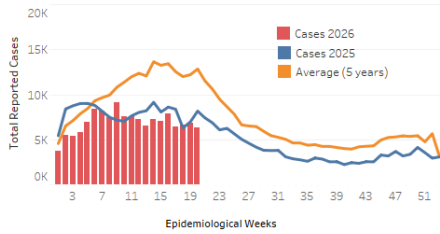
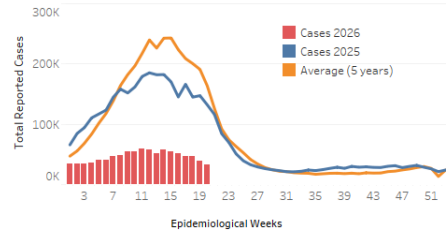


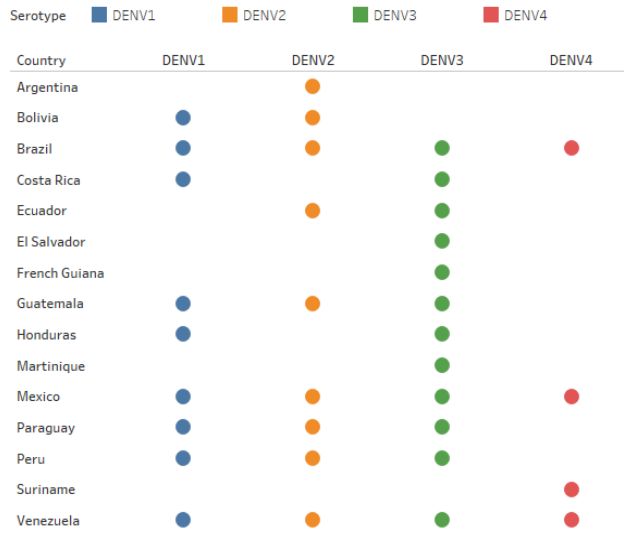
Figure 6. Total number of suspected dengue cases to EW 20 in 2026, 2025 and average of the last 5 years. Southern Cone Sub-region.



Source for figures 2 to 6. Health Information Platform for the Americas (PLISA). Data reported by the Ministries and Institutes of Health of the countries and territories of the Region.

15 countries reported the circulation of dengue serotypes in the Americas. Brazil, Venezuela, Mexico report the simultaneous circulation of DENV-1, DENV-2, DENV-3, and DENV-4. Figure 7 shows the serotypes reported by country.

Figure 7. Geographic distribution of serotypes in the Region of the Americas, 2026.



Source: Health Information Platform for the Americas (PLISA). Data reported by the Ministries and Institutes of Health of the countries and territories of the Region.

Notes:

- The data published is preliminary and is subject to change as new notifications and adjustments are carried out by the countries.
- The number of cases by country can be consulted at www.paho.org/plisa.