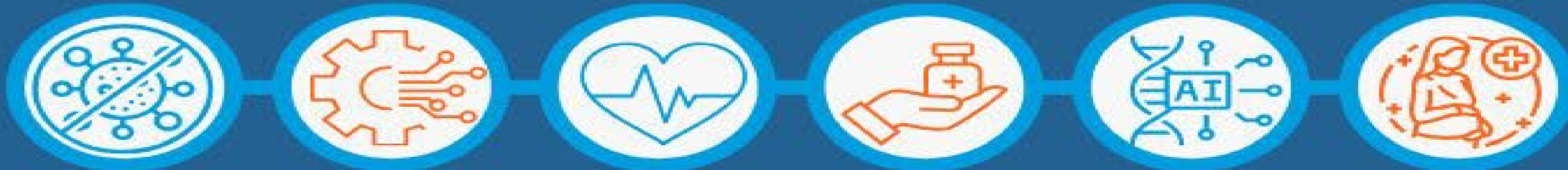


Synergies for Universal Health: Leveraging PAHO's Flagship Initiatives and the Role of PAHO/WHO Collaborating Centres



PAHO



WHO Collaborating Centre
For Childhood Cancer

9-10 September 2025

Sent by: (United States) at 2025-08-17 16:28:16

WHO Collaborating Centre for Childhood Cancer - USA-445

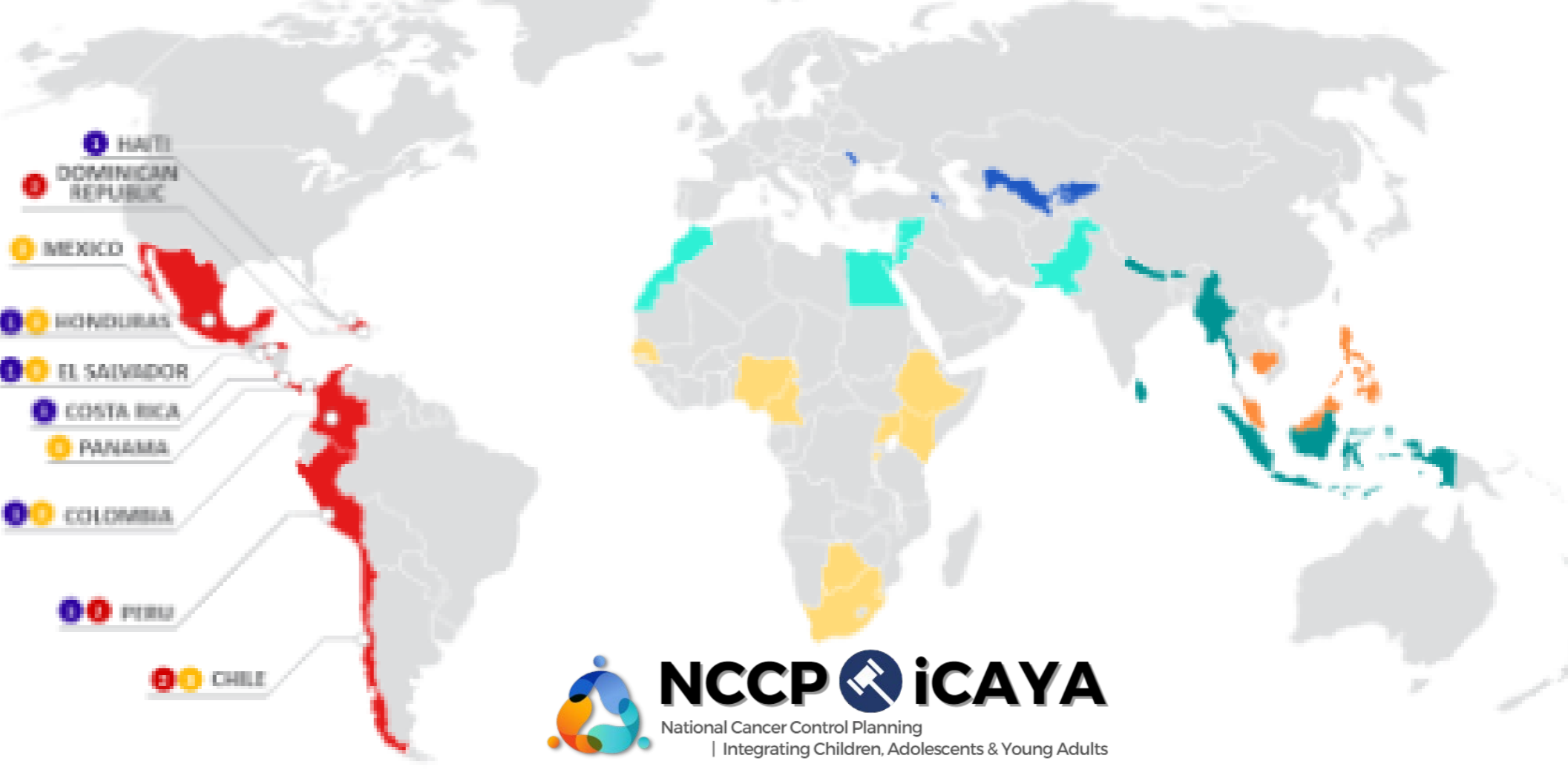
Catherine Lam MD MPH¹, Patricia Loggetto MPP¹, Soad Fuentes-Alabí MD MPH¹, Liliana Vasquez MD MSc², Claudia Sampor MD², Melissa Santiago MPH MPA¹, Desiree Becerra, MPP MSc¹, Heather Fosburgh MPH MS¹, Paola Friedrich MD MPH¹, Mauricio Maza MD², Silvana Luciani², Carlos Rodriguez-Galindo MD¹
1. Department of Global Pediatric Medicine, St. Jude Children's Research Hospital 2. Pan American Health Organization

How the Collaborating Centre is contributing to the achievement of PAHO Flagship Initiative Better Care for NCDs, and Global Initiative for Childhood Cancer: CureAll Americas

St. Jude Children's Research Hospital (St. Jude) advances cures for pediatric catastrophic diseases through research and treatment. Since 2018, St. Jude has served as the WHO Collaborating Centre for Childhood Cancer and provides ongoing technical and financial support to WHO/PAHO to implement its Flagship **Global Initiative for Childhood Cancer (GICC)**. With the goal of increasing children's survival rate to at least 60% by 2030 while reducing suffering for all, GICC applies the **CureAll** framework to strengthen health systems through 4 **Pillars**: **C**enters of excellence, **U**niversal Health Coverage, **R**egimens for diagnosis and treatment, and **E**valuation and monitoring, supported by **Enablers**: **A**dvocacy, **L**everaged Financing, and **L**inked Policies/Governance. We contribute to PAHO's regional implementation of GICC (**CureAll Americas**) by:

- ✓ **Promoting evidence-informed policies** through National Cancer Control Planning integrating Children, Adolescents & Young Adults (NCCP iCAYA), a knowledge exchange program we host to highlight how **CureAll** supports broader **Noncommunicable disease (NCD)** and health goals, engaging **70 ministry-designated teams (15 PAHO)** from **39 countries** globally (TOR1)
- ✓ **Co-developing technical products**, with **200+ stakeholders** from **23 countries**, including strengthening **primary healthcare** referrals & cancer management (TOR2/3)
- ✓ **Promoting stakeholder engagement & knowledge diffusion**, via **40+** regional/global events and webinars, including UNGA 2023 **UHC** side-event (TOR2/3)

Teams in National Cancer Control Planning
integrating Children, Adolescents & Young Adults

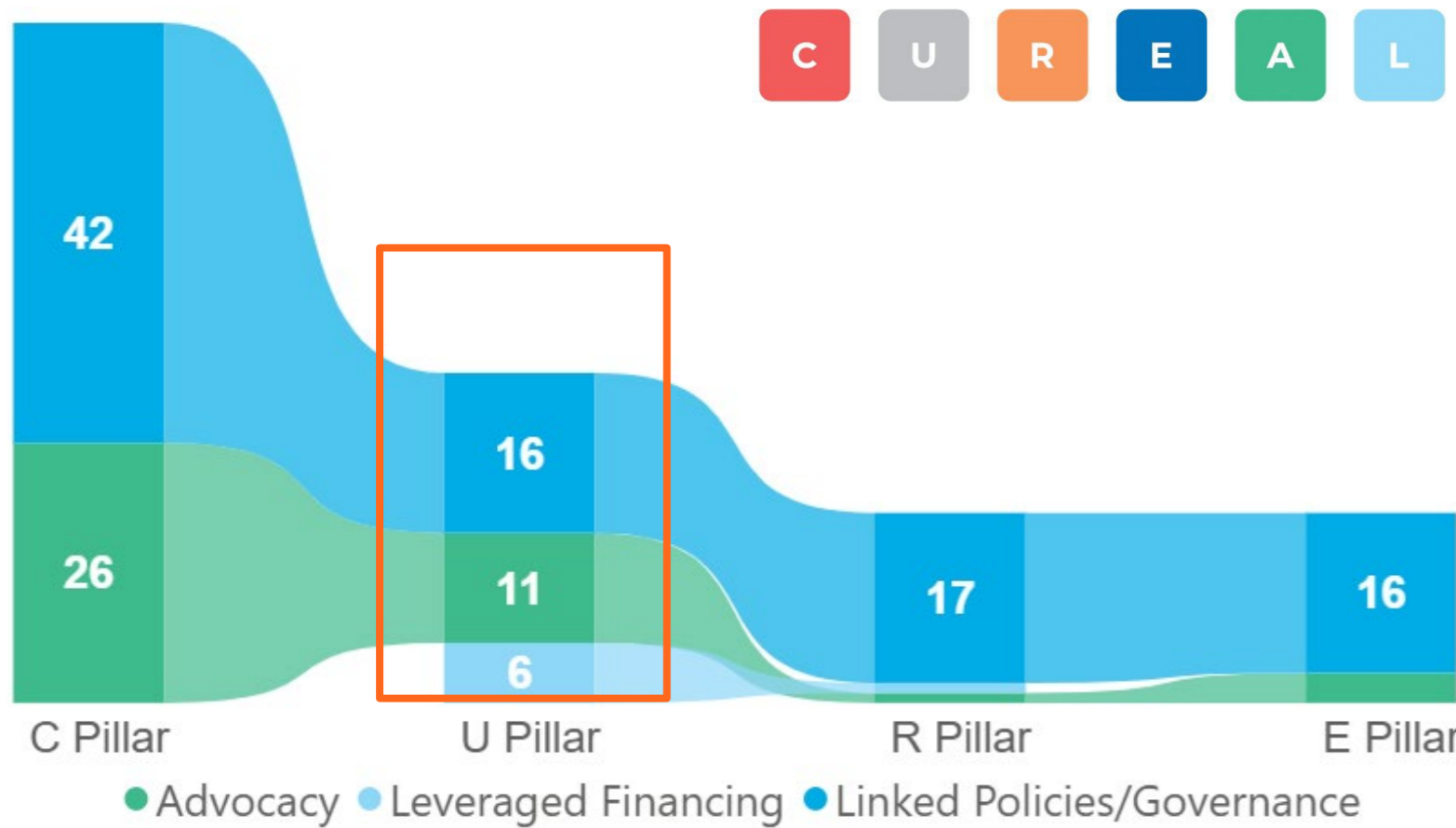


Main Deliverables (2022-present, as per the Workplan)

St. Jude-PAHO efforts support **23 countries** regionally on **139 CureAll projects** through **125 deliverables**

- Of these, **33** in **U**niversal Health pillar (**28** projects in **14** countries, **5** regional projects), resulting in **37 U** pillar deliverables

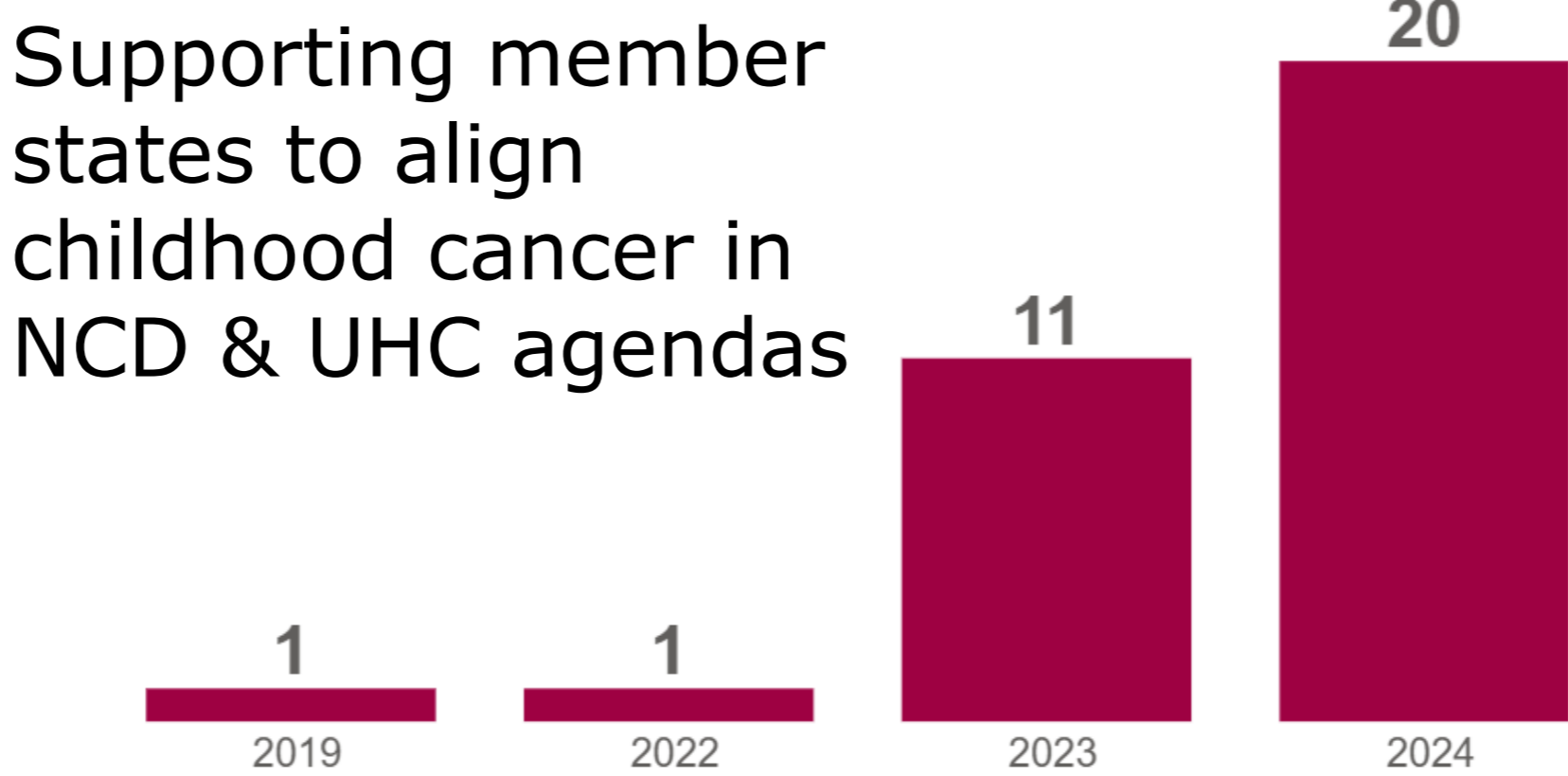
Projects Across Pillars and Enablers



Out of the 125 co-developed by **St. Jude-PAHO**, **38** are **publicly accessible** regional deliverables for GICC:

- **6** Virtual courses
- **19** Technical documents
- **5** Regional assessments
- **8** Awareness campaigns

PAHO U Projects Across Time



U pillar projects have grown significantly since 2022, increasing by **20-fold**

Sample Deliverables



Palliative Care Training



Child-friendly Resources

Regional Data Snapshots

Guide on Nutrition

St. Jude-PAHO's partnership has been a cornerstone for **mobilizing resources** and aligning **technical priorities** across the Americas. The work reflects a strong convergence between institutional agendas, particularly in health systems and priority-setting (C5), metrics (ProFILE), and care packages (e.g., Palliative care, Registry). A **Global Platform for Access to Childhood Cancer Medicines** (with **\$200M USD** from St. Jude) by WHO and St. Jude has grown from our partnership, engaging PAHO countries (Ecuador & El Salvador), with quality-assured medicines reaching children regionally via PAHO Strategic Fund.

Recommendations to Improve Collaboration

1. **Expand platforms for networking** and sharing across WHO CCs and WHO Headquarters, Regional and Country Offices to exchange **lessons**, best **practices** and **tools**, harnessing multisectoral expertise and collaboration to achieve 2030 targets, including those aligned with **Universal Health Coverage**.
2. **Encourage and publicize creative showcases**, providing opportunities for regional champions to display creativity, vision and empowerment, including the WHO Health for All Film Festival as a way to promote partnership for the goals, and cross-promoting showcases hosted by WHO CCs (e.g. photo-storytelling campaigns and annual **CureAll** showcase hosted by our St. Jude-PAHO teams).
3. **Facilitate learning systems & joint projects** across WHO CCs and sectors, including welcoming interdisciplinary exchange. PAHO can disseminate open communities/projects, such as our **Global Nexus of Policies and Systems (NexPoS) Community**, welcoming collaborators to share expertise from divergent fields and shape innovations for common challenges, such as referral systems or diagnostics.



Join
NexPoS

To collaborate, please
contact:
healthsystems@stjude.org

General Scope (Terms of Reference)

1. Support WHO in **including childhood cancer in national cancer control plans** through tools for prioritization, costing and framework for monitoring and evaluation.
2. Support WHO in developing **tools and platforms for innovation** including diffusion in **childhood cancer management, research and education**.
3. Support WHO in strengthening childhood cancer control through **technical support, training material and stakeholder engagement**.

Acknowledgements



We would like to thank all the country focal points, PAHO Regional Offices, colleagues and friends that have been working tirelessly to provide better care and cure to our children and adolescents, and to all the patients and families that inspire us in our daily work, who remind us that **health indeed, is for all**.