

# Regional Revolving Funds

2025

**PAHO**



Pan American  
Health  
Organization



World Health  
Organization  
Americas Region

Second Regional Webinar with  
PAHO/WHO Collaborating Centres

# Regional Revolving Funds

Santiago Cornejo  
Executive Manager



**PAHO**

9-10 September 2025

# PAHO Regional Revolving Funds

**Revolving  
Fund** For Access  
to Vaccines

**Strategic  
Fund**

**Regional  
Revolving  
Funds**

The RRFs are **technical cooperation mechanisms** that enable the Americas to equitable access timely quality **vaccines, essential medicines**, and public health supplies.

Through **pooled procurement**, Member States obtain affordable prices and **plan their demand together** to obtain benefits for all plus, **a reliable demand predictability**.





# Political will is the backbone of RRF's initiatives

## PAHO Member States

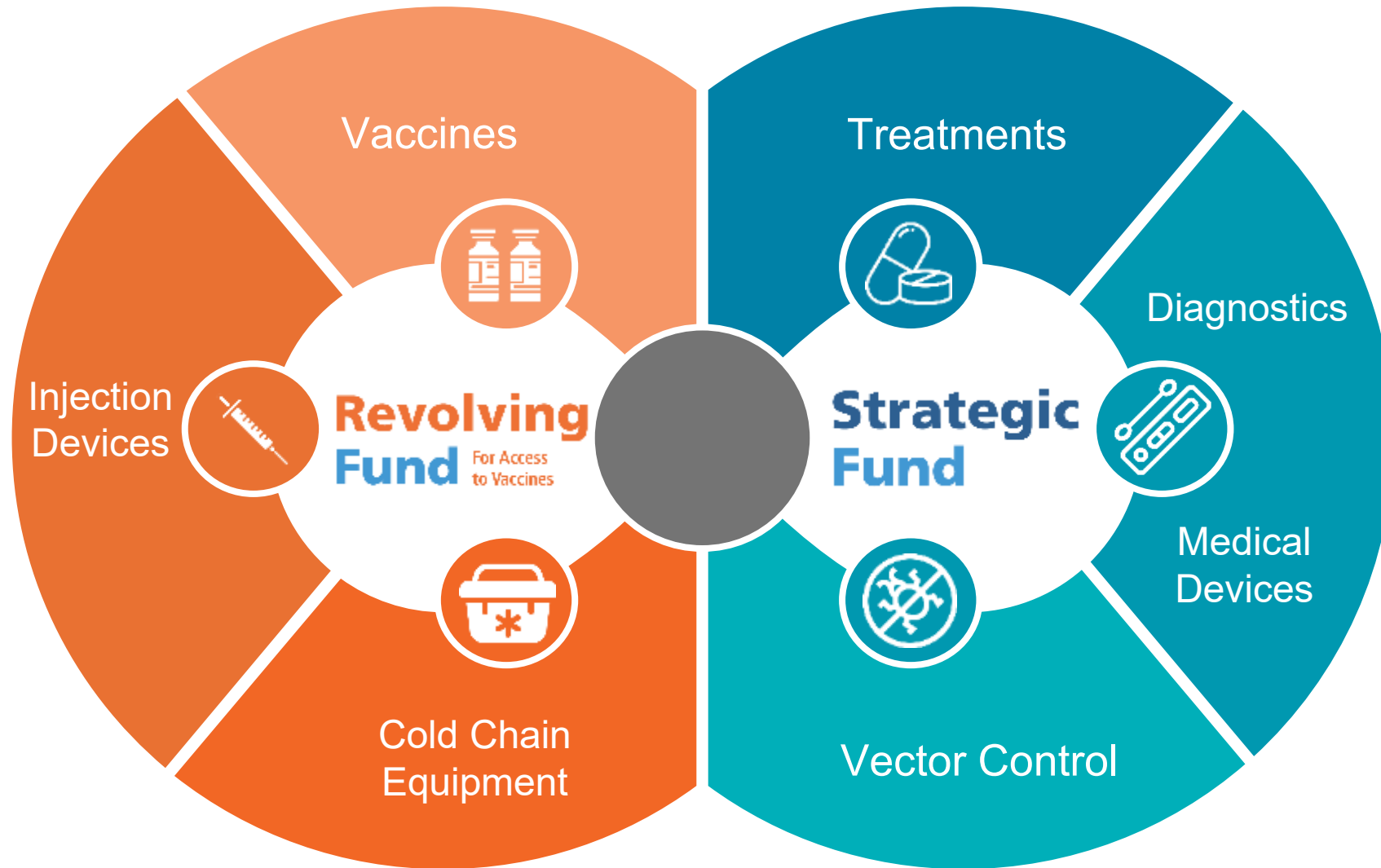
Created, defined principles and the vision of the RRF

Manage substantial changes and priorities

Align and submit demand each year

Contribute to the program's sustainability through an admin charge

# Scope of PAHO Regional Revolving Funds



<https://www.paho.org/en/revolving-fund>



<https://www.paho.org/en/paho-strategic-fund>

**PAHO**



# Comparative advantages of PAHO Regional Revolving Funds



**Single access** for demand consolidation and economies of scale.



**Guaranteed quality** for MS and technical support facilitator beyond the purchase process and throughout the useful life of the supply.



**Timely financing** through its line of credit.



**Serve as process facilitator and provide technical support** for efficient planning, financial projections, shipment monitoring, and market analysis.



**Transparency** in processes and prices.

# Credit Line: Unique Attribute of the RRFs

Bridge financing is offered to access the supplies with a 60-day repayment period



**Service Fee: 4.25%**

Total Acquisition

**Credit line: 2.5%**

**Administrative cost: 1.75%**



## **0% interest**

60 days reimbursement after delivery and invoice placement



## **Timely supplies**

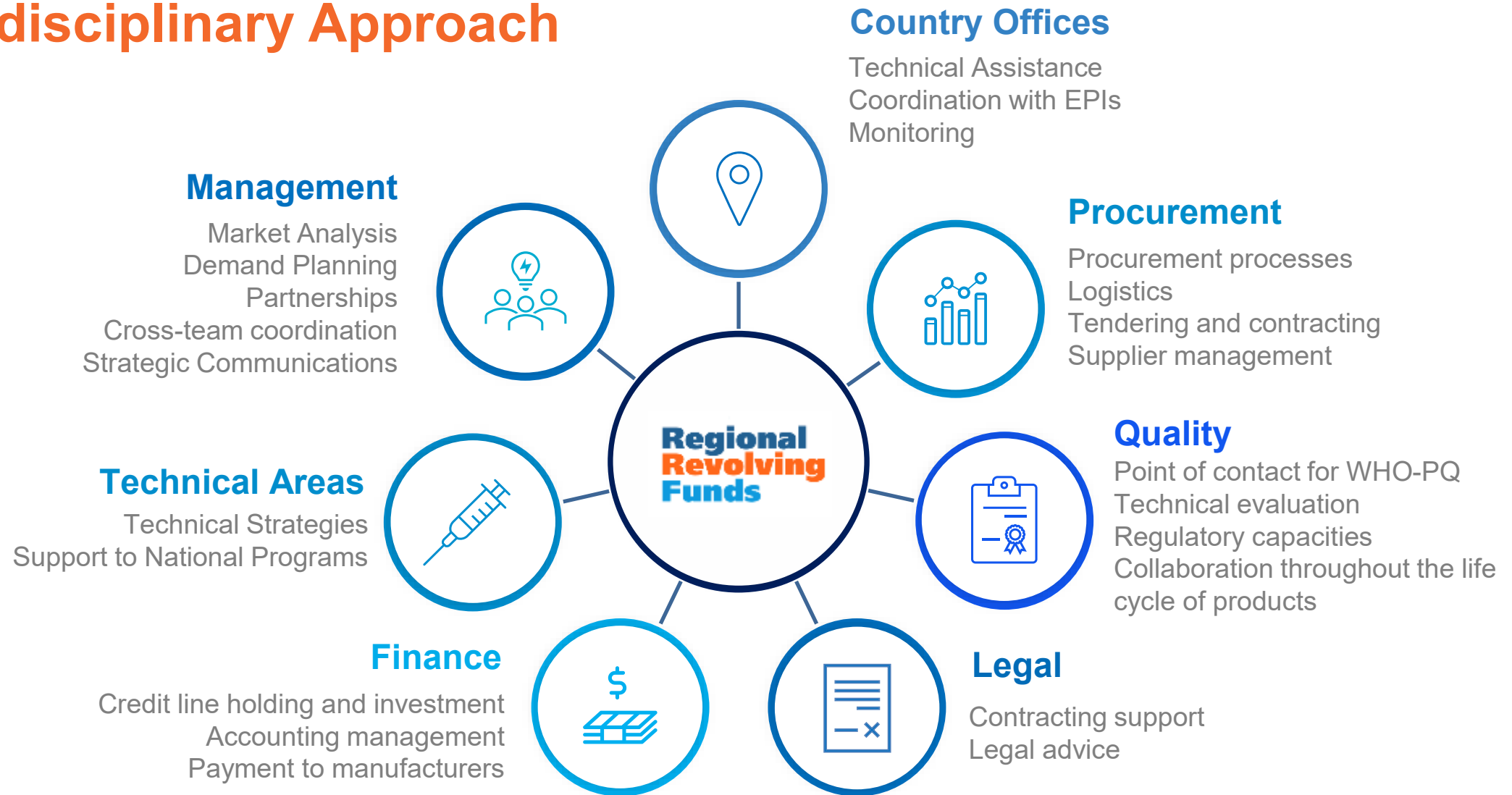
Allows to advance financing to ensure the continuity of safe, effective and quality health care supplies.



## **Lower fees than other mechanisms**

Covers costs and investments required for the operation of the Funds.

# Interdisciplinary Approach





# RRF Strategic Priorities

## Specific initiatives



Focus support on the PAHO's flagship initiatives: Elimination Initiative, and telehealth

## Strengthening Innovation and Regional Manufacturing



Reduce the region's dependence on external sources of essential health products and supply chain vulnerabilities.

## Establishment of regional supply agreements for rapid response



Improve preparedness and response capacities through early access to medical countermeasures.

## Creation of a regional hub



Alleviate supply chain disruptions in emergency situations and reduce transportation costs

# Thank you!



**PAHO**



**Regional  
Revolving  
Funds**

