

The Complex World of Policy Development in Health

Mukesh Chawla, PhD

The World Bank

July 12, 2021

Aspiration versus Reality

- Embed public health functions within health security and health systems
- Enhance inter-sectoral collaboration
- Address social determinants of health
- Ensure individual right to health

- Hardly have the money to address curative care – how will public health spending be sustained?
- Huge struggles within-sector collaboration
- Yes – but takes me outside my comfort zone
- Yes – but this could become very costly

Legality versus Reality

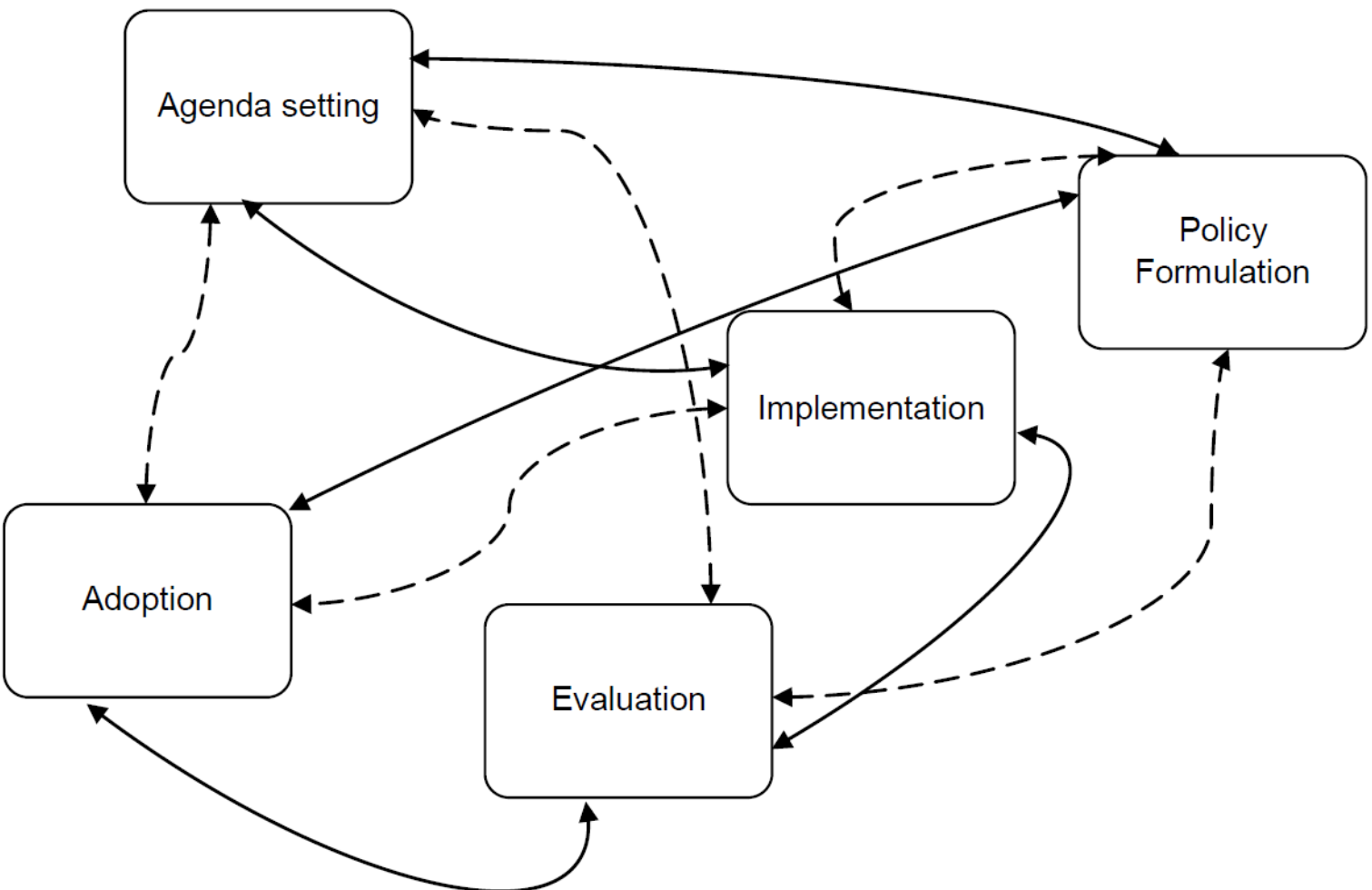
- Define roles and functions
- Describe the dos (commission) and don'ts (omissions)
- Establish rules and regulations
- Assign responsibilities
- Prescribe fines, rewards and remedies

- Huge challenges in operationalizing roles and executing responsibilities
- Difficult to monitor the acts of commission and omission
- Not easy to enforce rules
- Financial constraints can be limiting
- Tough to follow-through

Your Views versus My Views

- Whose rights are right – or are all rights right?
- What constitutes ‘public interest’
- What defines whether a situation is ‘problematic’ – and for whom?
- Are all problems interpreted to be equally problematic by everybody?
- Which advocacy strategies make most sense – and to/for whom?
- Which factors facilitate the policy-making and implementation processes – at individual, organizational and systemic levels?
- What barriers hinder the progress of public policies at three levels: at individual, organizational and systemic levels?

The Science, Art and Practice of Policy Making



Benoit, F. (2013). Public Policy Models and Their Usefulness in Public Health: The Stages Model. Montréal, Québec: National Collaborating Centre for Healthy Public Policy